



PARMENTER CENTER

2501 PARMENTER STREET, MIDDLETON, WI

BUILDING

Parmenter Center is a 40,000 SF, three-story, Class-A commercial office building that was completed in 2015. The exterior features high-end design materials: cantilever steel beams, cedar wood sunshades, multicolored and textured Nichiha fiber cement paneling, and corrugated metal panels.

LOCATION

Parmenter Center is conveniently located near the Beltline, adjacent to the Pheasant Branch Conservancy and within walking distance of Downtown Middleton shops, restaurants, and fitness centers.

AMENITIES

Interior amenities include shared storage, reception/waiting area, kitchen, cafeteria, conference room, shower, and laundry. Exterior amenities include ample bike parking and shared patio areas for outdoor dining/gathering.

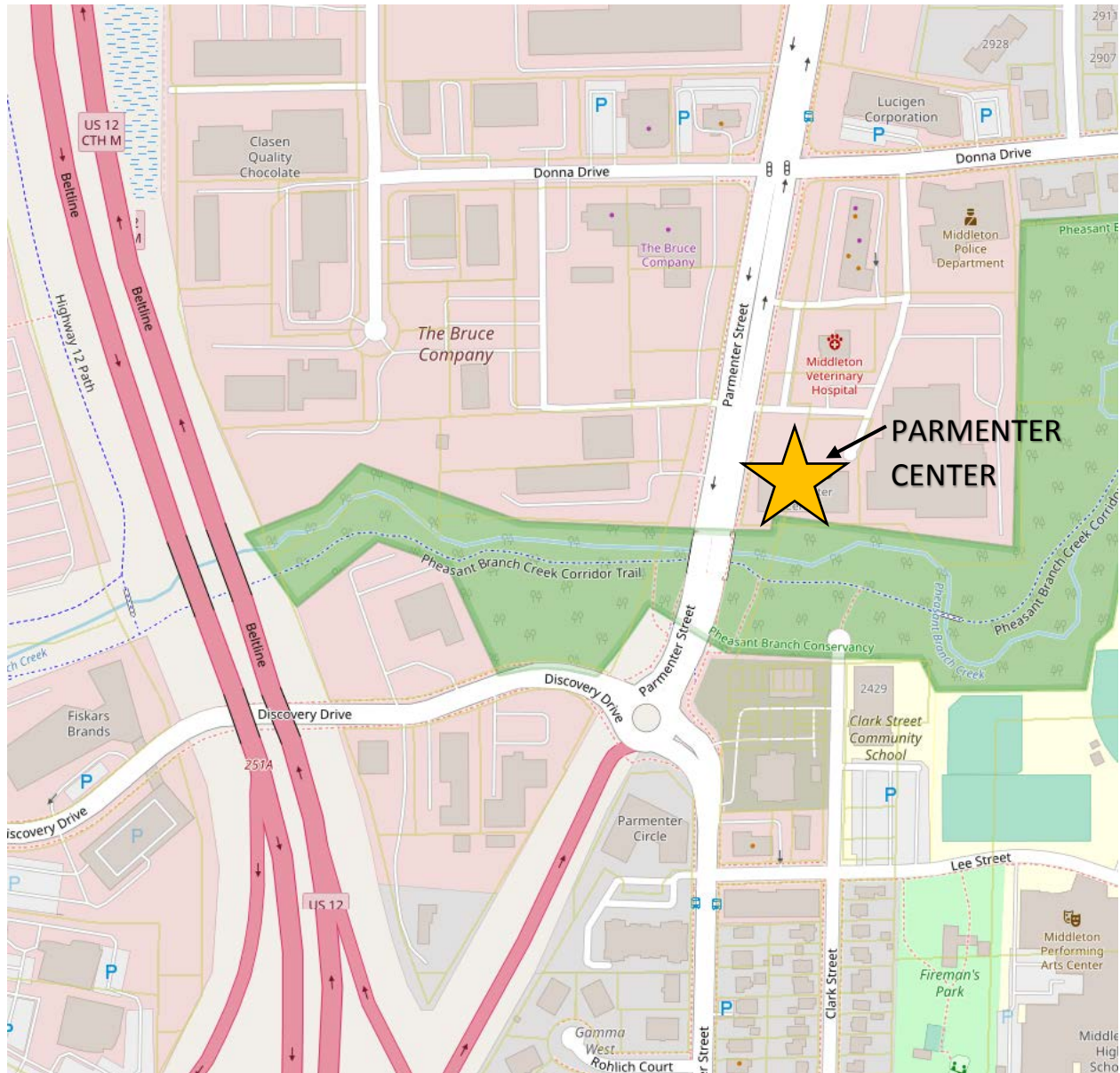
Brandi Zander
VP of Brokerage & Development
608-509-1002
bzander@migllc.biz

MIG Commercial Real Estate
3001 West Beltline Hwy, #202
Madison, WI 53713
www.migllc.biz



MAP VIEW

2501 PARMENTER STREET, MIDDLETON, WI



Brandi Zander
VP of Brokerage & Development
608-509-1002
bzander@migllc.biz

MIG Commercial Real Estate
3001 West Beltline Hwy, #202
Madison, WI 53713
www.migllc.biz



SPACE FOR LEASE

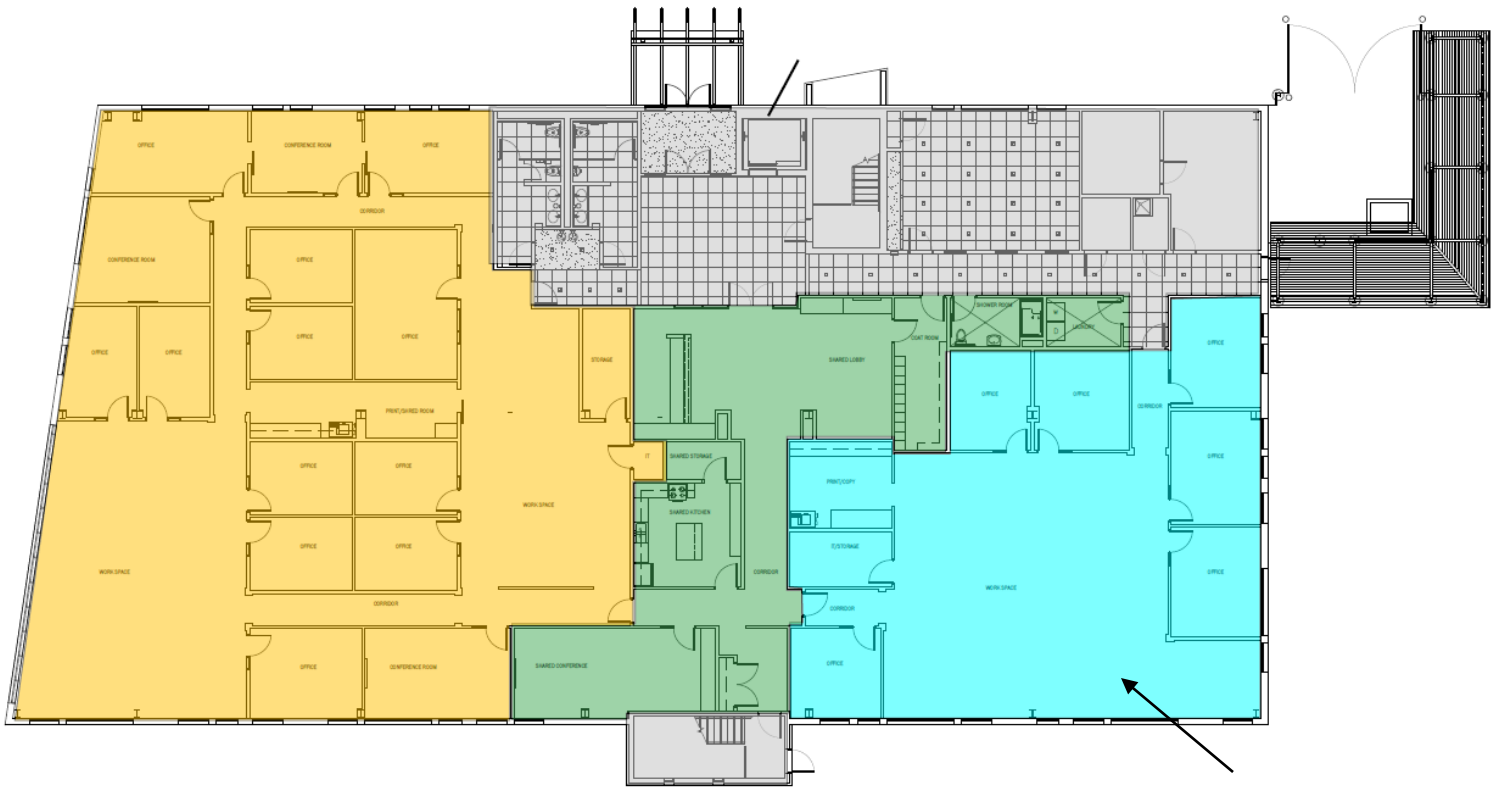
2501 PARMENTER STREET, MIDDLETON, WI

FIRST FLOOR

4,670 TOTAL RSF - \$16.50/SF NNN

SUITE 100B (BLUE): 3,505 RSF

+ 50% OF SHARED AMENITIES (GREEN): 1,165 RSF



AVAILABLE

Brandi Zander
VP of Brokerage & Development
608-509-1002
bzander@migllc.biz

MIG Commercial Real Estate
3001 West Beltline Hwy, #202
Madison, WI 53713
www.migllc.biz



Brandi Zander
VP of Brokerage & Development
608-509-1002
bzander@migllc.biz

MIG Commercial Real Estate
3001 West Beltline Hwy, #202
Madison, WI 53713
www.migllc.biz