



RE
REGISTERED ENGINEER

GENERAL NOTES - FLOOR PLAN

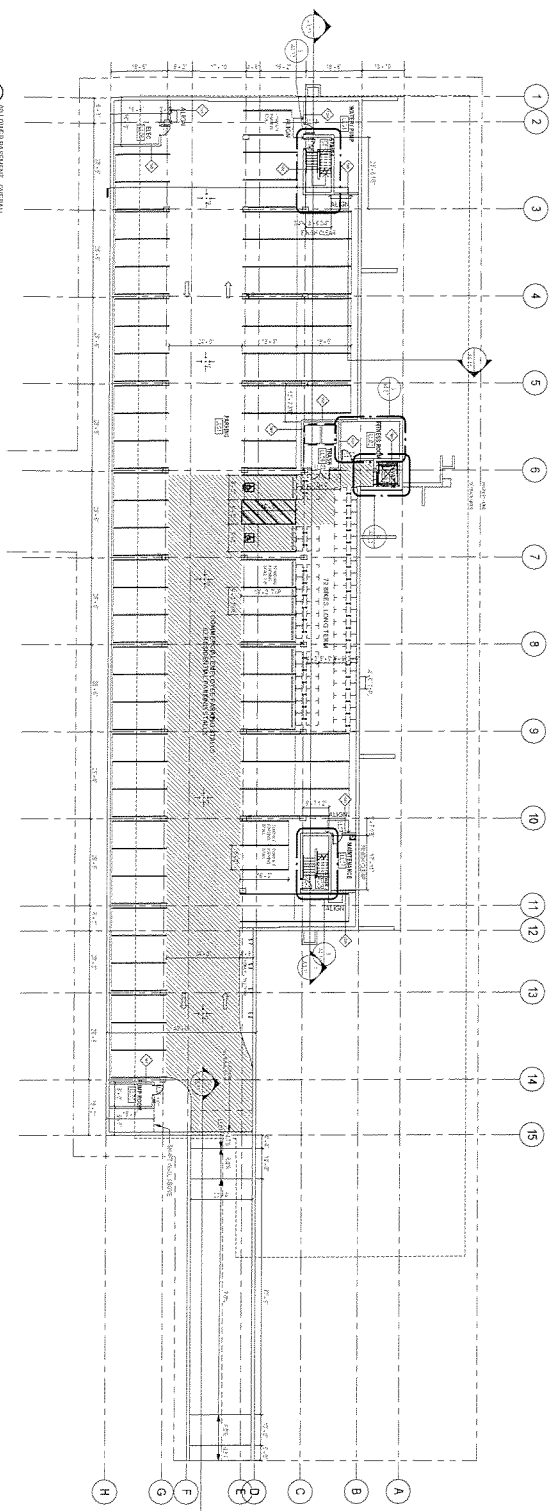
1. REFER TO ALL GENERAL NOTES, CONDITIONS AND RELATED NOTES TO THESE SETS.
2. ALL WORK SHALL BE IN ACCORDANCE WITH THE LATEST EDITIONS OF THE INTERNATIONAL BUILDING CODE (IBC) AND ALL APPLICABLE LOCAL, STATE AND FEDERAL CODES.
3. ALL WORK SHALL BE IN ACCORDANCE WITH THE LATEST EDITIONS OF THE INTERNATIONAL MECHANICAL AND ELECTRICAL PLUMBING AND HEATING CODE (IMC) AND ALL APPLICABLE LOCAL, STATE AND FEDERAL CODES.
4. ALL WORK SHALL BE IN ACCORDANCE WITH THE LATEST EDITIONS OF THE INTERNATIONAL FIRE AND SAFETY CODE (IFSC) AND ALL APPLICABLE LOCAL, STATE AND FEDERAL CODES.
5. ALL WORK SHALL BE IN ACCORDANCE WITH THE LATEST EDITIONS OF THE INTERNATIONAL ENERGY CONSERVATION CODE (IECC) AND ALL APPLICABLE LOCAL, STATE AND FEDERAL CODES.
6. ALL WORK SHALL BE IN ACCORDANCE WITH THE LATEST EDITIONS OF THE INTERNATIONAL PLUMBING AND MECHANICAL CODE (IPC) AND ALL APPLICABLE LOCAL, STATE AND FEDERAL CODES.
7. ALL WORK SHALL BE IN ACCORDANCE WITH THE LATEST EDITIONS OF THE INTERNATIONAL ELECTRICAL CODE (NEC) AND ALL APPLICABLE LOCAL, STATE AND FEDERAL CODES.
8. ALL WORK SHALL BE IN ACCORDANCE WITH THE LATEST EDITIONS OF THE INTERNATIONAL FIRE AND SAFETY CODE (IFSC) AND ALL APPLICABLE LOCAL, STATE AND FEDERAL CODES.
9. ALL WORK SHALL BE IN ACCORDANCE WITH THE LATEST EDITIONS OF THE INTERNATIONAL MECHANICAL AND ELECTRICAL PLUMBING AND HEATING CODE (IMC) AND ALL APPLICABLE LOCAL, STATE AND FEDERAL CODES.
10. ALL WORK SHALL BE IN ACCORDANCE WITH THE LATEST EDITIONS OF THE INTERNATIONAL BUILDING CODE (IBC) AND ALL APPLICABLE LOCAL, STATE AND FEDERAL CODES.
11. ALL WORK SHALL BE IN ACCORDANCE WITH THE LATEST EDITIONS OF THE INTERNATIONAL MECHANICAL AND ELECTRICAL PLUMBING AND HEATING CODE (IMC) AND ALL APPLICABLE LOCAL, STATE AND FEDERAL CODES.
12. ALL WORK SHALL BE IN ACCORDANCE WITH THE LATEST EDITIONS OF THE INTERNATIONAL FIRE AND SAFETY CODE (IFSC) AND ALL APPLICABLE LOCAL, STATE AND FEDERAL CODES.
13. ALL WORK SHALL BE IN ACCORDANCE WITH THE LATEST EDITIONS OF THE INTERNATIONAL ELECTRICAL CODE (NEC) AND ALL APPLICABLE LOCAL, STATE AND FEDERAL CODES.
14. ALL WORK SHALL BE IN ACCORDANCE WITH THE LATEST EDITIONS OF THE INTERNATIONAL MECHANICAL AND ELECTRICAL PLUMBING AND HEATING CODE (IMC) AND ALL APPLICABLE LOCAL, STATE AND FEDERAL CODES.

CONDITIONS OF APPROVAL NOTES

THIS SET OF DRAWINGS IS THE PROPERTY OF VERIBICHER ARCHITECTS. IT IS TO BE USED ONLY FOR THE PROJECT AND SITE SPECIFICALLY IDENTIFIED HEREIN. ANY REUSE OR MODIFICATION OF THESE DRAWINGS WITHOUT THE WRITTEN CONSENT OF VERIBICHER ARCHITECTS IS STRICTLY PROHIBITED. ALL CONDITIONS SHALL BE KEPT ON FILE WITH THE ORIGINAL SET OF DRAWINGS.

PLAN LEGEND

- 1. FINISH FLOOR
- 2. FINISH FLOOR
- 3. FINISH FLOOR
- 4. FINISH FLOOR
- 5. FINISH FLOOR
- 6. FINISH FLOOR
- 7. FINISH FLOOR
- 8. FINISH FLOOR
- 9. FINISH FLOOR
- 10. FINISH FLOOR
- 11. FINISH FLOOR
- 12. FINISH FLOOR
- 13. FINISH FLOOR
- 14. FINISH FLOOR
- 15. FINISH FLOOR
- 16. FINISH FLOOR
- 17. FINISH FLOOR
- 18. FINISH FLOOR
- 19. FINISH FLOOR
- 20. FINISH FLOOR
- 21. FINISH FLOOR
- 22. FINISH FLOOR
- 23. FINISH FLOOR
- 24. FINISH FLOOR
- 25. FINISH FLOOR
- 26. FINISH FLOOR
- 27. FINISH FLOOR
- 28. FINISH FLOOR
- 29. FINISH FLOOR
- 30. FINISH FLOOR
- 31. FINISH FLOOR
- 32. FINISH FLOOR
- 33. FINISH FLOOR
- 34. FINISH FLOOR
- 35. FINISH FLOOR
- 36. FINISH FLOOR
- 37. FINISH FLOOR
- 38. FINISH FLOOR
- 39. FINISH FLOOR
- 40. FINISH FLOOR
- 41. FINISH FLOOR
- 42. FINISH FLOOR
- 43. FINISH FLOOR
- 44. FINISH FLOOR
- 45. FINISH FLOOR
- 46. FINISH FLOOR
- 47. FINISH FLOOR
- 48. FINISH FLOOR
- 49. FINISH FLOOR
- 50. FINISH FLOOR
- 51. FINISH FLOOR
- 52. FINISH FLOOR
- 53. FINISH FLOOR
- 54. FINISH FLOOR
- 55. FINISH FLOOR
- 56. FINISH FLOOR
- 57. FINISH FLOOR
- 58. FINISH FLOOR
- 59. FINISH FLOOR
- 60. FINISH FLOOR
- 61. FINISH FLOOR
- 62. FINISH FLOOR
- 63. FINISH FLOOR
- 64. FINISH FLOOR
- 65. FINISH FLOOR
- 66. FINISH FLOOR
- 67. FINISH FLOOR
- 68. FINISH FLOOR
- 69. FINISH FLOOR
- 70. FINISH FLOOR
- 71. FINISH FLOOR
- 72. FINISH FLOOR
- 73. FINISH FLOOR
- 74. FINISH FLOOR
- 75. FINISH FLOOR
- 76. FINISH FLOOR
- 77. FINISH FLOOR
- 78. FINISH FLOOR
- 79. FINISH FLOOR
- 80. FINISH FLOOR
- 81. FINISH FLOOR
- 82. FINISH FLOOR
- 83. FINISH FLOOR
- 84. FINISH FLOOR
- 85. FINISH FLOOR
- 86. FINISH FLOOR
- 87. FINISH FLOOR
- 88. FINISH FLOOR
- 89. FINISH FLOOR
- 90. FINISH FLOOR
- 91. FINISH FLOOR
- 92. FINISH FLOOR
- 93. FINISH FLOOR
- 94. FINISH FLOOR
- 95. FINISH FLOOR
- 96. FINISH FLOOR
- 97. FINISH FLOOR
- 98. FINISH FLOOR
- 99. FINISH FLOOR
- 100. FINISH FLOOR



1. BASEMENT - OVERALL

MEASUREMENTS

ALL DIMENSIONS SHALL BE IN FEET AND INCHES UNLESS OTHERWISE NOTED.

MEASUREMENTS

ALL DIMENSIONS SHALL BE IN FEET AND INCHES UNLESS OTHERWISE NOTED.

MEASUREMENTS

ALL DIMENSIONS SHALL BE IN FEET AND INCHES UNLESS OTHERWISE NOTED.

MEASUREMENTS

ALL DIMENSIONS SHALL BE IN FEET AND INCHES UNLESS OTHERWISE NOTED.

MEASUREMENTS

ALL DIMENSIONS SHALL BE IN FEET AND INCHES UNLESS OTHERWISE NOTED.

MEASUREMENTS

ALL DIMENSIONS SHALL BE IN FEET AND INCHES UNLESS OTHERWISE NOTED.

MEASUREMENTS

ALL DIMENSIONS SHALL BE IN FEET AND INCHES UNLESS OTHERWISE NOTED.

MEASUREMENTS

ALL DIMENSIONS SHALL BE IN FEET AND INCHES UNLESS OTHERWISE NOTED.

MEASUREMENTS

ALL DIMENSIONS SHALL BE IN FEET AND INCHES UNLESS OTHERWISE NOTED.

MEASUREMENTS

ALL DIMENSIONS SHALL BE IN FEET AND INCHES UNLESS OTHERWISE NOTED.

MEASUREMENTS

ALL DIMENSIONS SHALL BE IN FEET AND INCHES UNLESS OTHERWISE NOTED.

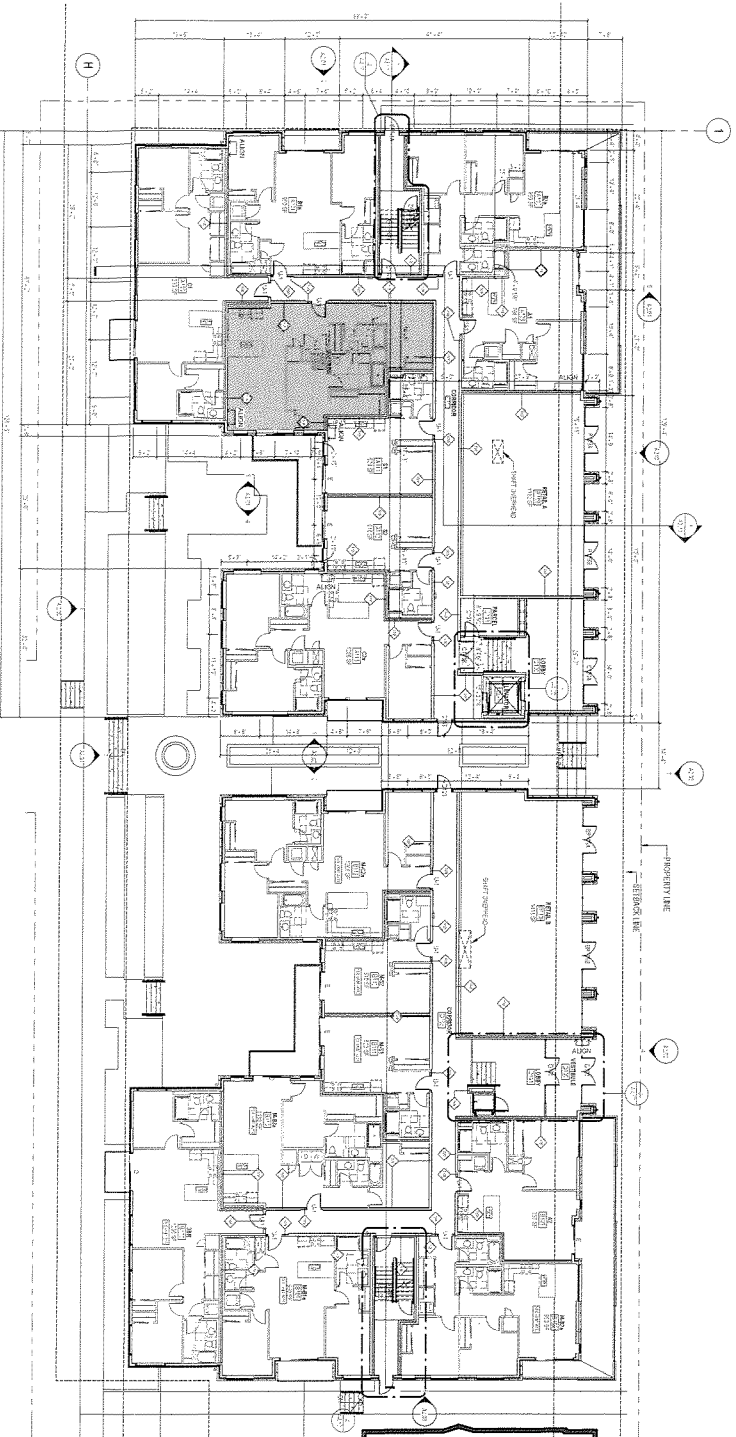


GENERAL NOTES - FLOOR PLAN

1. ALL WORK SHALL BE IN ACCORDANCE WITH THE LATEST EDITIONS OF THE INTERNATIONAL BUILDING CODES AND ALL APPLICABLE LOCAL ORDINANCES.
2. THE CONTRACTOR SHALL BE RESPONSIBLE FOR OBTAINING ALL NECESSARY PERMITS AND APPROVALS FROM THE APPLICABLE AGENCIES.
3. THE CONTRACTOR SHALL BE RESPONSIBLE FOR OBTAINING ALL NECESSARY PERMITS AND APPROVALS FROM THE APPLICABLE AGENCIES.
4. ALL WORK SHALL BE IN ACCORDANCE WITH THE LATEST EDITIONS OF THE INTERNATIONAL BUILDING CODES AND ALL APPLICABLE LOCAL ORDINANCES.
5. THE CONTRACTOR SHALL BE RESPONSIBLE FOR OBTAINING ALL NECESSARY PERMITS AND APPROVALS FROM THE APPLICABLE AGENCIES.
6. ALL WORK SHALL BE IN ACCORDANCE WITH THE LATEST EDITIONS OF THE INTERNATIONAL BUILDING CODES AND ALL APPLICABLE LOCAL ORDINANCES.
7. THE CONTRACTOR SHALL BE RESPONSIBLE FOR OBTAINING ALL NECESSARY PERMITS AND APPROVALS FROM THE APPLICABLE AGENCIES.
8. ALL WORK SHALL BE IN ACCORDANCE WITH THE LATEST EDITIONS OF THE INTERNATIONAL BUILDING CODES AND ALL APPLICABLE LOCAL ORDINANCES.
9. THE CONTRACTOR SHALL BE RESPONSIBLE FOR OBTAINING ALL NECESSARY PERMITS AND APPROVALS FROM THE APPLICABLE AGENCIES.
10. ALL WORK SHALL BE IN ACCORDANCE WITH THE LATEST EDITIONS OF THE INTERNATIONAL BUILDING CODES AND ALL APPLICABLE LOCAL ORDINANCES.

PLAN LEGEND

- 1. FLOOR PLAN
- 2. SECTION
- 3. ELEVATION
- 4. FINISH
- 5. SCHEDULE
- 6. REFERENCE
- 7. DIMENSION
- 8. AREA
- 9. VOLUME
- 10. WEIGHT
- 11. PERCENT
- 12. RATIO
- 13. FRACTION
- 14. DECIMAL
- 15. PERCENTAGE
- 16. PERCENTAGE POINT
- 17. PERCENTAGE PERCENT
- 18. PERCENTAGE PERCENT PERCENT
- 19. PERCENTAGE PERCENT PERCENT PERCENT
- 20. PERCENTAGE PERCENT PERCENT PERCENT PERCENT



GENERAL NOTES

1. ALL WORK SHALL BE IN ACCORDANCE WITH THE LATEST EDITIONS OF THE INTERNATIONAL BUILDING CODES AND ALL APPLICABLE LOCAL ORDINANCES.

2. THE CONTRACTOR SHALL BE RESPONSIBLE FOR OBTAINING ALL NECESSARY PERMITS AND APPROVALS FROM THE APPLICABLE AGENCIES.

3. ALL WORK SHALL BE IN ACCORDANCE WITH THE LATEST EDITIONS OF THE INTERNATIONAL BUILDING CODES AND ALL APPLICABLE LOCAL ORDINANCES.

4. THE CONTRACTOR SHALL BE RESPONSIBLE FOR OBTAINING ALL NECESSARY PERMITS AND APPROVALS FROM THE APPLICABLE AGENCIES.

5. ALL WORK SHALL BE IN ACCORDANCE WITH THE LATEST EDITIONS OF THE INTERNATIONAL BUILDING CODES AND ALL APPLICABLE LOCAL ORDINANCES.

6. THE CONTRACTOR SHALL BE RESPONSIBLE FOR OBTAINING ALL NECESSARY PERMITS AND APPROVALS FROM THE APPLICABLE AGENCIES.

7. ALL WORK SHALL BE IN ACCORDANCE WITH THE LATEST EDITIONS OF THE INTERNATIONAL BUILDING CODES AND ALL APPLICABLE LOCAL ORDINANCES.

8. THE CONTRACTOR SHALL BE RESPONSIBLE FOR OBTAINING ALL NECESSARY PERMITS AND APPROVALS FROM THE APPLICABLE AGENCIES.

9. ALL WORK SHALL BE IN ACCORDANCE WITH THE LATEST EDITIONS OF THE INTERNATIONAL BUILDING CODES AND ALL APPLICABLE LOCAL ORDINANCES.

10. THE CONTRACTOR SHALL BE RESPONSIBLE FOR OBTAINING ALL NECESSARY PERMITS AND APPROVALS FROM THE APPLICABLE AGENCIES.

GENERAL NOTES

1. ALL WORK SHALL BE IN ACCORDANCE WITH THE LATEST EDITIONS OF THE INTERNATIONAL BUILDING CODES AND ALL APPLICABLE LOCAL ORDINANCES.

2. THE CONTRACTOR SHALL BE RESPONSIBLE FOR OBTAINING ALL NECESSARY PERMITS AND APPROVALS FROM THE APPLICABLE AGENCIES.

3. ALL WORK SHALL BE IN ACCORDANCE WITH THE LATEST EDITIONS OF THE INTERNATIONAL BUILDING CODES AND ALL APPLICABLE LOCAL ORDINANCES.

4. THE CONTRACTOR SHALL BE RESPONSIBLE FOR OBTAINING ALL NECESSARY PERMITS AND APPROVALS FROM THE APPLICABLE AGENCIES.

5. ALL WORK SHALL BE IN ACCORDANCE WITH THE LATEST EDITIONS OF THE INTERNATIONAL BUILDING CODES AND ALL APPLICABLE LOCAL ORDINANCES.

6. THE CONTRACTOR SHALL BE RESPONSIBLE FOR OBTAINING ALL NECESSARY PERMITS AND APPROVALS FROM THE APPLICABLE AGENCIES.

7. ALL WORK SHALL BE IN ACCORDANCE WITH THE LATEST EDITIONS OF THE INTERNATIONAL BUILDING CODES AND ALL APPLICABLE LOCAL ORDINANCES.

8. THE CONTRACTOR SHALL BE RESPONSIBLE FOR OBTAINING ALL NECESSARY PERMITS AND APPROVALS FROM THE APPLICABLE AGENCIES.

9. ALL WORK SHALL BE IN ACCORDANCE WITH THE LATEST EDITIONS OF THE INTERNATIONAL BUILDING CODES AND ALL APPLICABLE LOCAL ORDINANCES.

10. THE CONTRACTOR SHALL BE RESPONSIBLE FOR OBTAINING ALL NECESSARY PERMITS AND APPROVALS FROM THE APPLICABLE AGENCIES.

719-729 E JOHNSON ST
 FLOOR PLAN - FIRST

Sheet No. **A1.11**