



Hoepker Corporate Center

Highway 51 & Hoepker Road

Madison, WI 53704



About Hoepker Corporate Center

Upon final completion, Hoepker Corporate Center will be comprised of more than 138,000 square feet of flex/R&D space. With close proximity to Dane County Airport, I-90 and I-39, Hoepker Corporate Center provides quick and easy access to major thoroughfares.

*For more information on
Hoepker Corporate Center, visit:
sjpi.com/hoepkercorporate*



FLEX / R&D SPACE

FLEX / R&D SPACE

6602 Ronald Reagan Ave.	53,908 SF
6406 Ronald Reagan Ave.	42,784 SF
6504 Ronald Reagan Ave.	42,064 SF

BUILDING SPECIFICATIONS

Ceiling Height	16 ft. clear minimum
Parking	330 spaces
Heat	Natural Gas
Roof	EPDM rubber
Exterior Walls	Masonry
Loading	Dock or drive-in
Zoning	IL-Industrial Limited





Hoepker Corporate Center

HOEPKER ROAD

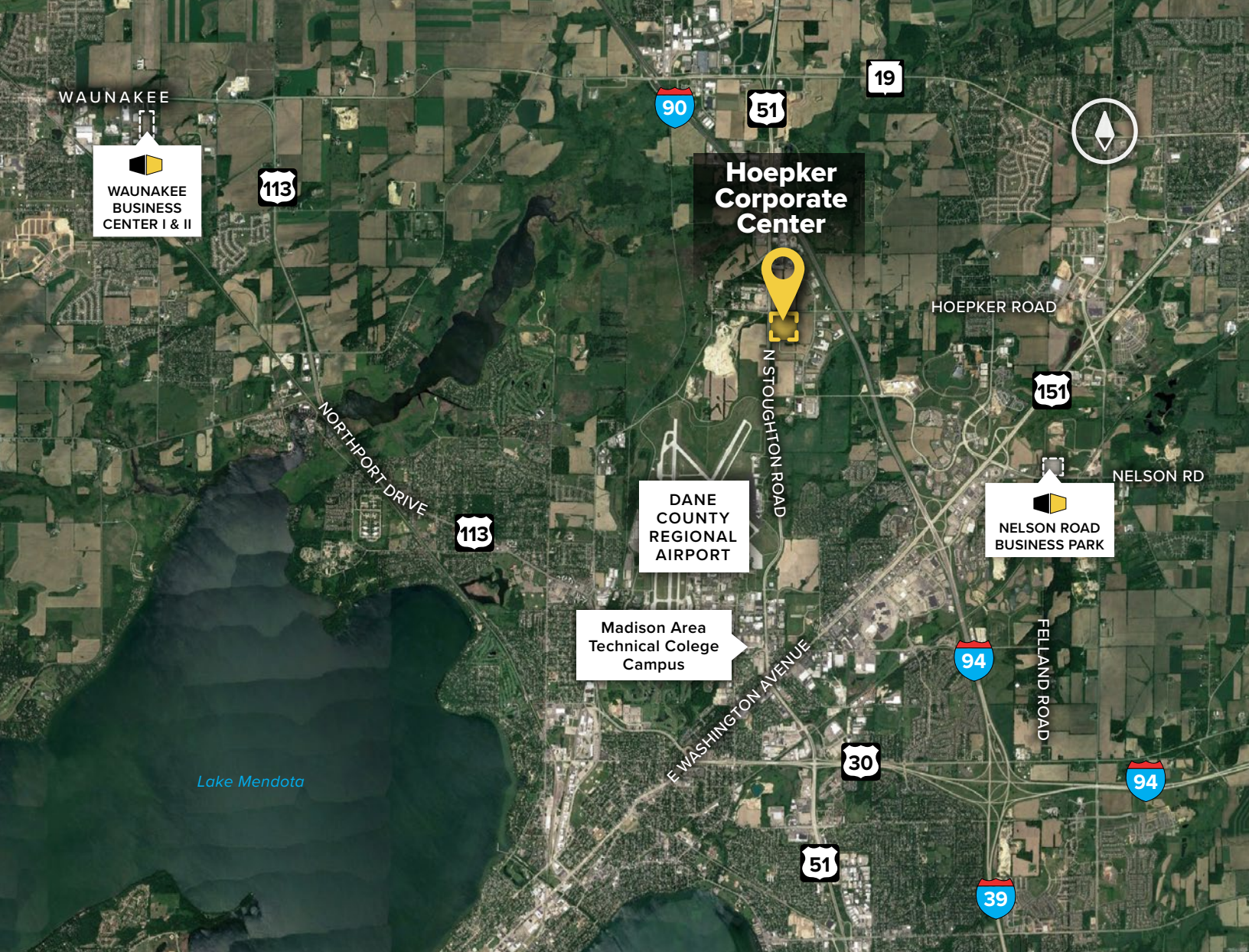
↑ 1 MILE TO I-94 RAMPS



STOUGHTON ROAD



↓ 4 MILES TO DANE COUNTY AIRPORT



**For additional leasing information
or to schedule a tour, contact:**

Gregory Fax
Regional Partner
262.524.0100 | gfax@sjpi.com



1020 James Drive | Suite G
Hartland, WI 53029
262.524.0100 | SJPI.COM
CO | MD | NV | PA | LA | UT | VA | WI

Connect with us @stjohnprop    

About St. John Properties

St. John Properties, Inc. is a full-service real estate company headquartered in Baltimore, Maryland. The company owns, manages and has developed more than 19 million square feet of commercial real estate, including office, flex/R&D, warehouse, retail and residential space.



This information contained in this publication has been obtained from sources believed to be reliable. St. John Properties makes no guarantee, warranty or representation about this information. Any projections, opinions, assumptions or estimates used here are for example only and do not represent the current or future performance of the property. Interested parties should conduct an independent investigation to determine whether the property suits their needs. REV 08/18