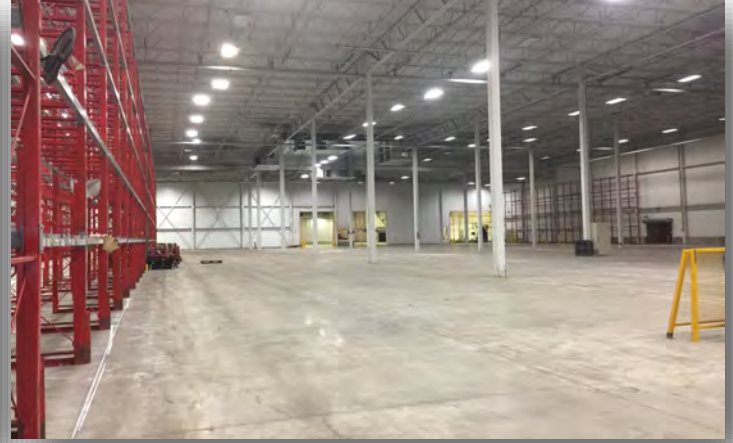


MID MADISON COMMERCE CENTER

910 Mayer Avenue, Madison, WI

Class A Cold Storage/ Warehouse



Property Highlights

- Class A Cold Storage/ Warehouse
- Construction Type: Steel Frame & Concrete
- Dock Doors: 25 Doors
- Preaction ESFR System
- Two power feeds, 13.8 KVA each, 3 Phase
- Can be split to accommodate multiple tenants
- Central to Madison
- Close to airport and downtown
- Madison Metro hub located on-site
- **Lease Rate:** \$5.50-\$7.50/PSF/NNN
- **Available SF:** 35,160 SF - 183,720 SF

Reich Brothers and Rabin Worldwide are proud to introduce Mid Madison Commerce Center formally known as the Oscar Mayer Headquarters. Class A cold storage and warehouse space is now available for lease! Don't miss out on this amazing opportunity!

NGG Real Estate

Dan Holvick, Partner
NGG Real Estate
T 608-828-8803 direct
M 608-220-7740 mobile
dan.holvick@nggwi.com



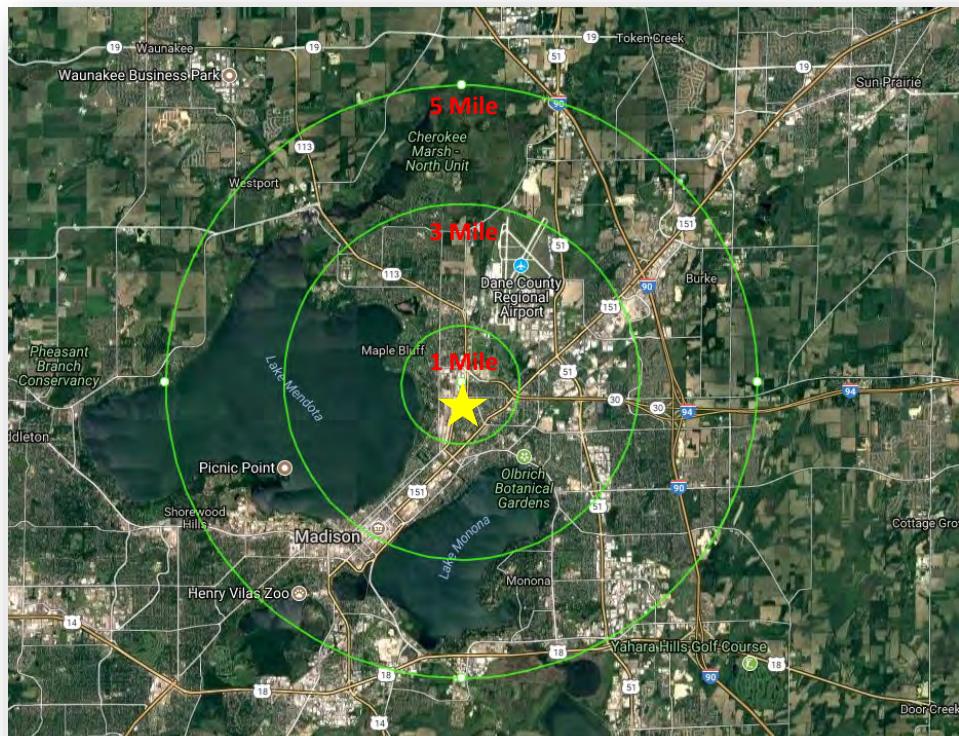
Geoffrey Kasselmann, SIOR, LEED AP
Newmark Knight Frank
T 773.957.1426
M 312.543.2900
gkasselmann@ngkf.com



All information is from sources deemed reliable but is presented subject to error, omission, change, prior transaction or withdrawal without notice. No representation or warranty is made is to as the environmental condition of the subject property or those adjacent to it.

Property Strengths

910 Mayer Avenue, Madison, WI 53704



- ◆ 1 mile to Dane County Regional Airport and 3 miles south of State Capital.
- ◆ In proximity to downtown Madison and the University.
- ◆ High visibility and easy access from Packers Avenue, Aberg Avenue and Hwy 151.
- ◆ High Traffic Counts: 30,134 AADT on Packers Avenue, 30,067 AADT on Aberg Avenue and 39,500 AADT on Hwy 151.
- ◆ Large wastewater treatment facility on-site, sized to accommodate large scale processing.
- ◆ Ammonia refrigeration system with high and low stage capacity distributed throughout manufacturing and the refrigerated warehouse area.

NGG Real Estate

Dan Holvick, Partner
NGG Real Estate
T 608-828-8803 direct
M 608-220-7740 mobile
dan.holvick@nggwi.com



Geoffrey Kasselmann, SIOR, LEED AP
Newmark Knight Frank
T 773.957.1426
M 312.543.2900
gkasselmann@ngkf.com



All information is from sources deemed reliable but is presented subject to error, omission, change, prior transaction or withdrawal without notice. No representation or warranty is made as to the environmental condition of the subject property or those adjacent to it.

Map/Aerial

910 Mayer Avenue, Madison, WI 53704



NGG Real Estate

Dan Holvick, Partner
NGG Real Estate
T 608-828-8803 direct
M 608-220-7740 mobile
dan.holvick@nggwi.com



Geoffrey Kasselmann, SIOR, LEED AP
Newmark Knight Frank
T 773.957.1426
M 312.543.2900
gkasselmann@ngkf.com



REICH BROTHERS

All information is from sources deemed reliable but is presented subject to error, omission, change, prior transaction or withdrawal without notice. No representation or warranty is made as to the environmental condition of the subject property or those adjacent to it.

Site Map

910 Mayer Avenue, Madison, WI 53704



NGG Real Estate

Dan Holvick, Partner
NGG Real Estate
T 608-828-8803 direct
M 608-220-7740 mobile
dan.holvick@nggwi.com



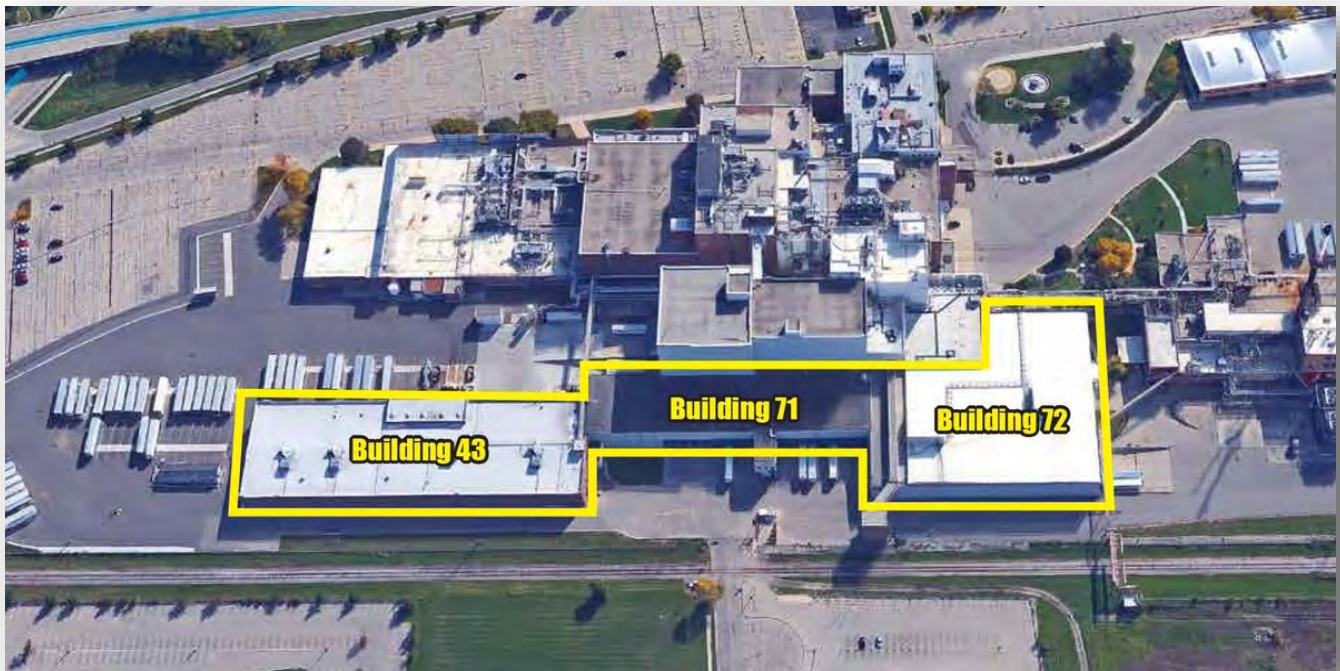
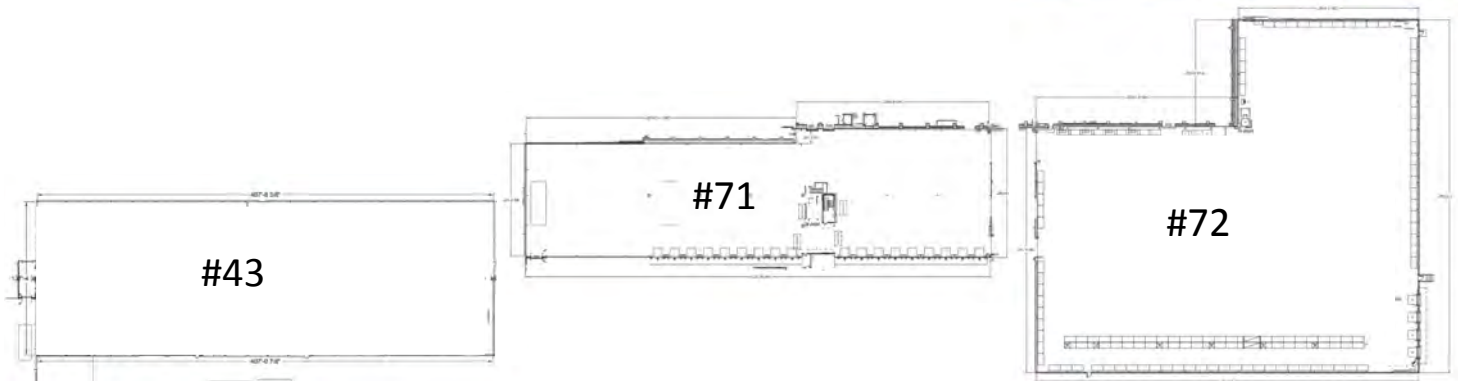
Geoffrey Kasselmann, SIOR, LEED AP
Newmark Knight Frank
T 773.957.1426
M 312.543.2900
gkasselmann@ngkf.com



All information is from sources deemed reliable but is presented subject to error, omission, change, prior transaction or withdrawal without notice. No representation or warranty is made as to the environmental condition of the subject property or those adjacent to it.

Warehouse/Cold Storage #43, #71, #72

910 Mayer Avenue, Madison, WI 53704



NGG Real Estate

Dan Holvick, Partner
NGG Real Estate
T 608-828-8803 direct
M 608-220-7740 mobile
dan.holvick@nggwi.com



Geoffrey Kasselmann, SIOR, LEED AP
Newmark Knight Frank
T 773.957.1426
M 312.543.2900
gkasselmann@ngkf.com



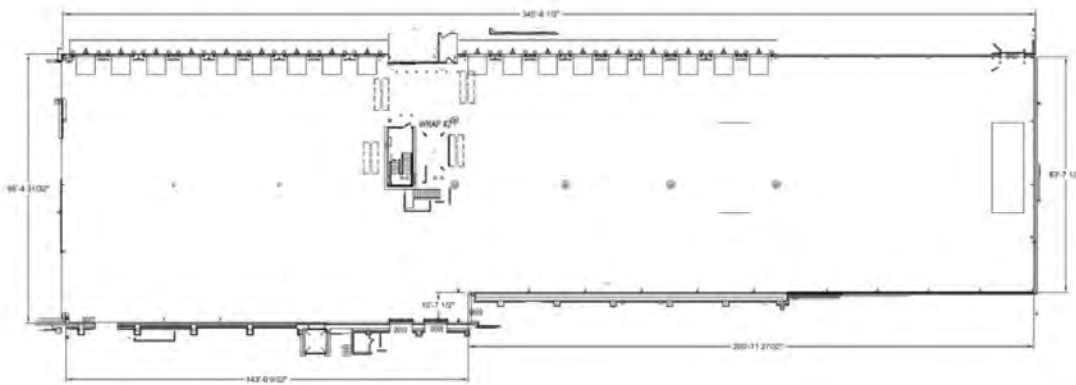
All information is from sources deemed reliable but is presented subject to error, omission, change, prior transaction or withdrawal without notice. No representation or warranty is made as to the environmental condition of the subject property or those adjacent to it.

Building #71

910 Mayer Avenue, Madison, WI 53704

Cold Storage: 35,160 SF

- 17 Dock Doors
- Cold storage to 32 degrees F
- 2,000 SF of Office
- 2,000 amps 480 3-phase
- Preaction ESFR System
- Natural Gas



NGG Real Estate

Dan Holvick, Partner
NGG Real Estate
T 608-828-8803 direct
M 608-220-7740 mobile
dan.holvick@nggwi.com



Geoffrey Kasselmann, SIOR, LEED AP
Newmark Knight Frank
T 773.957.1426
M 312.543.2900
gkasselmann@ngkf.com



REICH BROTHERS

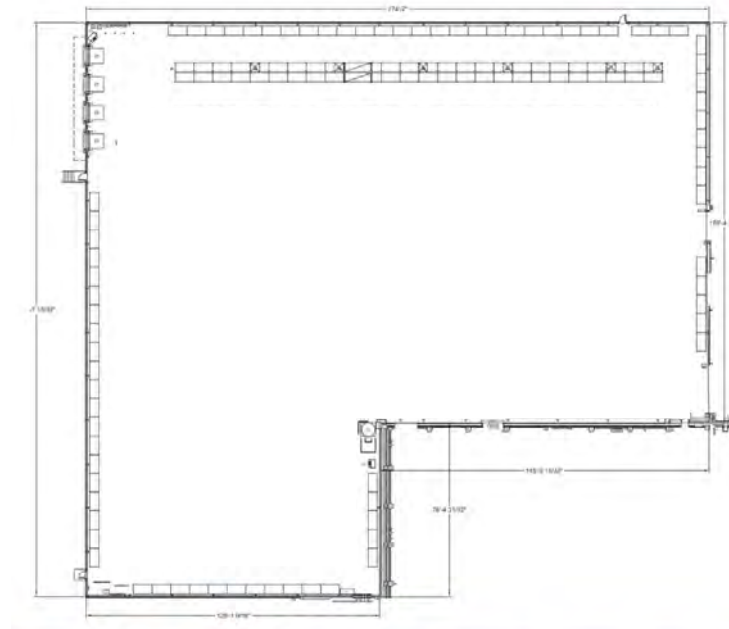
All information is from sources deemed reliable but is presented subject to error, omission, change, prior transaction or withdrawal without notice. No representation or warranty is made as to the environmental condition of the subject property or those adjacent to it.

Building #72

910 Mayer Avenue, Madison, WI 53704

Cold Storage: 58,670 SF

- 4 Dock Doors
- Cold Storage to 32 degree F
- Preaction ESFR System
- 2,000 amps 480 3-phase
- Natural Gas



NGG Real Estate

Dan Holvick, Partner
NGG Real Estate
T 608-828-8803 direct
M 608-220-7740 mobile
dan.holvick@nggwi.com



Geoffrey Kasselmann, SIOR, LEED AP
Newmark Knight Frank
T 773.957.1426
M 312.543.2900
gkasselmann@ngkf.com



All information is from sources deemed reliable but is presented subject to error, omission, change, prior transaction or withdrawal without notice. No representation or warranty is made as to the environmental condition of the subject property or those adjacent to it.

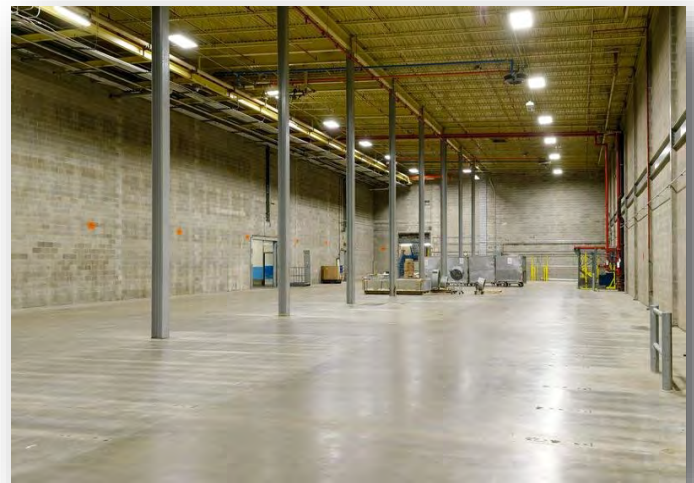
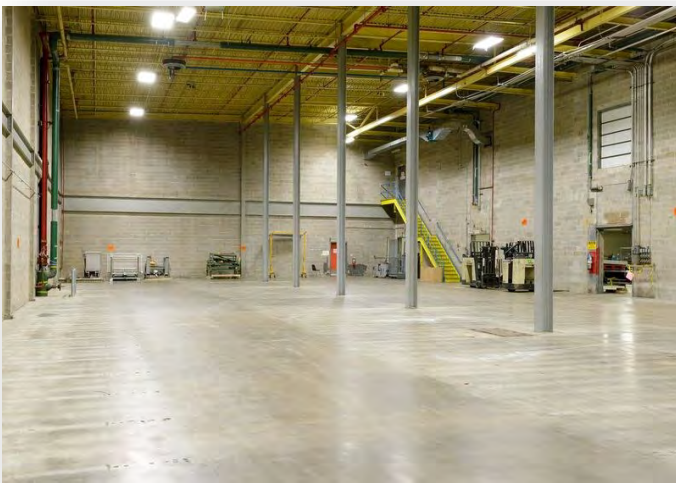
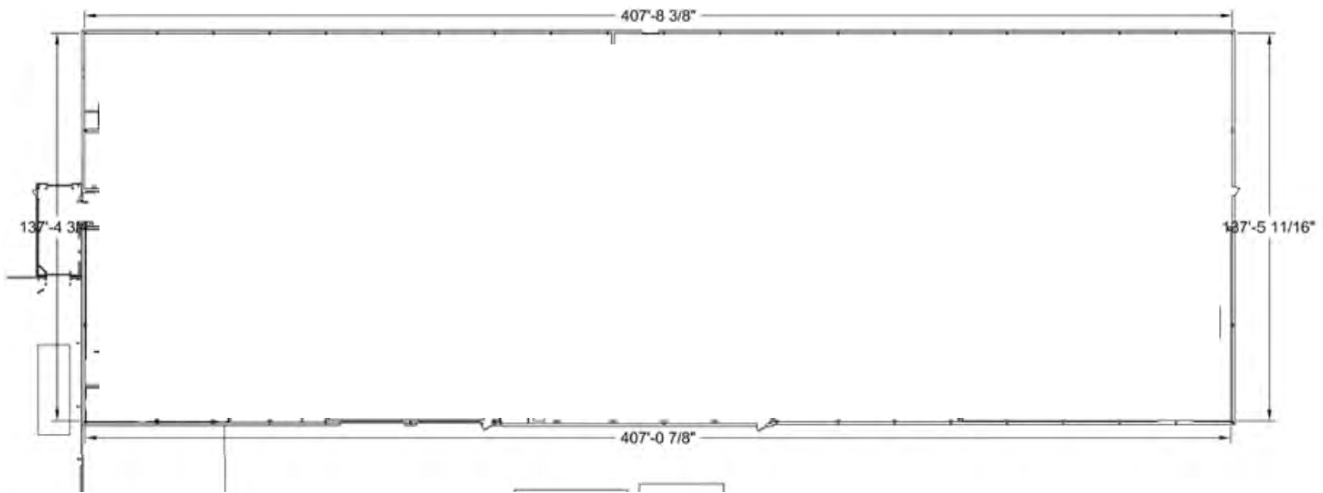
Building #43

910 Mayer Avenue, Madison, WI 53704

Warehouse: 60,000 SF

Mezzanine: 29,890 SF

- 4 Dock Doors
- 2000 amps, 480 3-phase
- Natural Gas
- 6 inch water line available
- Preaction ESFR System



NGG Real Estate

Dan Holvick, Partner
NGG Real Estate
T 608-828-8803 direct
M 608-220-7740 mobile
dan.holvick@nggwi.com



Geoffrey Kasselmann, SIOR, LEED AP
Newmark Knight Frank
T 773.957.1426
M 312.543.2900
gkasselmann@ngkf.com



All information is from sources deemed reliable but is presented subject to error, omission, change, prior transaction or withdrawal without notice. No representation or warranty is made as to the environmental condition of the subject property or those adjacent to it.

BROKER DISCLOSURE TO NON-RESIDENTIAL CUSTOMERS

1 Prior to negotiating on your behalf the Broker must provide you the following disclosure statement:

BROKER DISCLOSURE TO CUSTOMERS

3 You are a customer of the broker. The broker is either an agent of another party in the transaction or a subagent of another broker who is the agent of another party in the transaction. The broker, or a salesperson acting on behalf of the broker, may provide brokerage services to you. Whenever the broker is providing brokerage services to you, the broker owes you, the customer, the following duties:

- 7 The duty to provide brokerage services to you fairly and honestly.
- 8 The duty to exercise reasonable skill and care in providing brokerage services to you.
- 9 The duty to provide you with accurate information about market conditions with a reasonable time if you request it, unless disclosure of the information is prohibited by law.
- 11 The duty to disclose to you in writing certain material adverse facts about a property, unless disclosure of the information is prohibited by law (See Lines 47-55).
- 13 The duty to protect your confidentiality. Unless the law requires it, the broker will not disclose your confidential information or the confidential information of other parties (See Lines 22-39).
- 15 The duty to safeguard trust funds and other property the broker holds.
- 16 The duty, when negotiating, to present contract proposals in an objective and unbiased manner and disclose the advantages and disadvantages of the proposals.

18 Please review this information carefully. A broker or salesperson can answer your questions about brokerage services, but if you need legal advice, tax advice, or a professional home inspection, contact an attorney, tax advisor, or home inspector. This disclosure is required by section 452.135 of the Wisconsin statutes and is for information only. It is a plain-language summary of 21 A broker's duties to a customer under section 452.133 (1) of the Wisconsin statutes.

CONFIDENTIALITY NOTICE TO CUSTOMERS

23 BROKER WILL KEEP CONFIDENTIAL ANY INFORMATION GIVEN TO BROKER IN CONFIDENCE, OR ANY INFORMATION OBTAINED BY BROKER THAT HE OR SHE KNOWS A REASONABLE PERSON WOULD WANT TO BE KEPT CONFIDENTIAL, UNLESS THE INFORMATION MUST BE DISCLOSED BY LAW OR YOU AUTHORIZE THE BROKER TO DISCLOSE PARTICULAR INFORMATION. A BROKER SHALL CONTINUE TO KEEP THE INFORMATION CONFIDENTIAL AFTER BROKER IS NO LONGER PROVIDING BROKERAGE SERVICES TO YOU.

28 THE FOLLOWING INFORMATION IS REQUIRED TO BE DISCLOSED BY LAW:

- 29 1. MATERIAL ADVERSE FACTS, AS DEFINED IN SECTION 452.01 (5g) OF THE WISCONSIN STATUTES (SEE LINES 47-55).
 - 30 2. ANY FACTS KNOWN BY THE BROKER THAT CONTRADICT ANY INFORMATION INCLUDED IN A WRITTEN INSPECTION REPORT ON THE PROPERTY OR REAL ESTATE THAT IS THE SUBJECT OF THE TRANSACTION.
- 32 TO ENSURE THAT THE BROKER IS AWARE OF WHAT SPECIFIC INFORMATION YOU CONSIDER CONFIDENTIAL, YOU MAY LIST THAT INFORMATION BELOW (SEE LINES 35-36). AT A LATER TIME, YOU MAY ALSO PROVIDE THE BROKER WITH OTHER INFORMATION YOU CONSIDER TO BE CONFIDENTIAL.

35 **CONFIDENTIAL INFORMATION:** _____
36 _____

37 **NON-CONFIDENTIAL INFORMATION** (The following information may be disclosed by Broker):

CONSENT TO TELEPHONE SOLICITATION *(THE BROKER TO DISCLOSE SUCH AS FINANCIAL QUALIFICATION INFORMATION.)*

41 I/We agree that the Broker and any affiliated settlement service providers (for example, a mortgage company or title company) may call our/my home or cell phone numbers regarding issues, goods and services related to the real estate transaction until I/we

43 **SEX OFFENDER REGISTRY**. List Home/Cell Numbers: _____

45 *Notice: You may obtain information about the sex offender registry and persons registered with the registry by contacting the*
46 **DEFINITION OF MATERIAL ADVERSE FACTS** *Internet at <http://offender.doc.state.wi.us/public/> or by phone at 608-240-5830.*

48 A "material adverse fact" is defined in Wis. Stat. § 452.01 (5g) as an adverse fact that a party indicates is of such significance, or that is generally recognized by a competent licensee as being of such significance to a reasonable party, that it affects or would affect the party's decision to enter into a contract or agreement concerning a transaction or affects or would affect the party's decision about the terms of such a contract or agreement. An "adverse fact" is defined in Wis. Stat. § 452.01 (1e) as a condition or occurrence that a competent licensee generally recognizes will significantly and adversely affect the value of the property, significantly reduce the structural integrity of improvements to real estate, or present a significant health risk to occupants of the property; or information that indicates that a party to a transaction is not able to or does not intend to meet his or her obligations under a contract or agreement made concerning the transaction.