

Restaurant Property FOR LEASE

5696 Monona Drive
Madison, WI 53718
(Corner of Monona and
Tompkins)



CITY of MADISON ZONING

- \$23/SF/NNN plus \$8.00 (2018 expense) = \$5,993/mo.
- Set up for Restaurant with outdoor patio
- In place walk-in coolers, fire hood, utility hook ups
- Other Restaurant equipment included or available
- Corner lot access, Zoned C-1/R4 (City of Madison)
- 140 feet on Monona Dr. and 212.4 feet on Tompkins Dr.
- New improvements and interior upgrades in 2012
- 2,350 SF building with split block trash enclosure
- Approximately 38 on-site stalls
- Strong demographics & traffic count (26,950 ADTC)

For more information call:

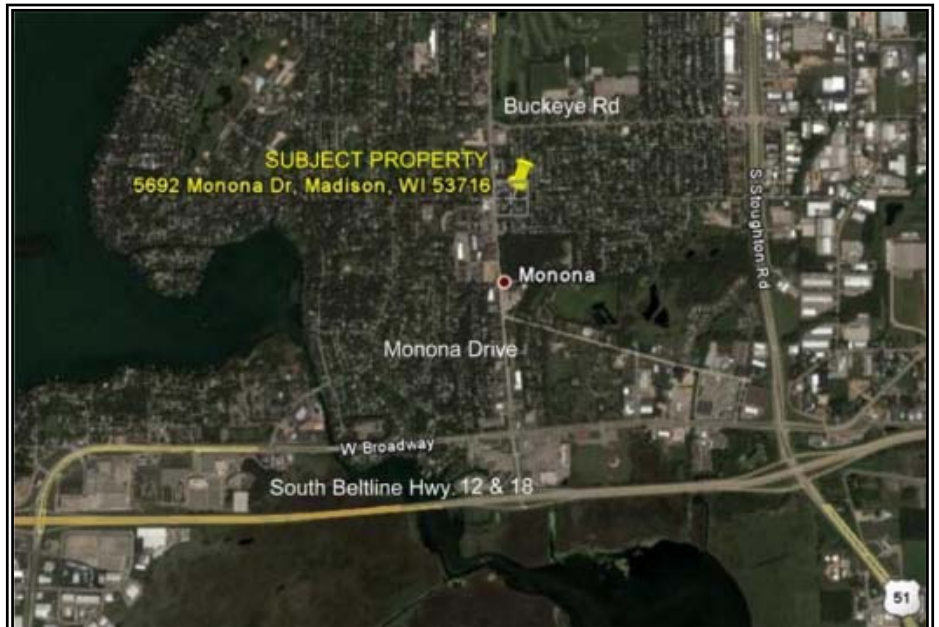
Fred Campbell, CRE
The Cascade Group, llc



THE CASCADE GROUP llc
REAL ESTATE SERVICES

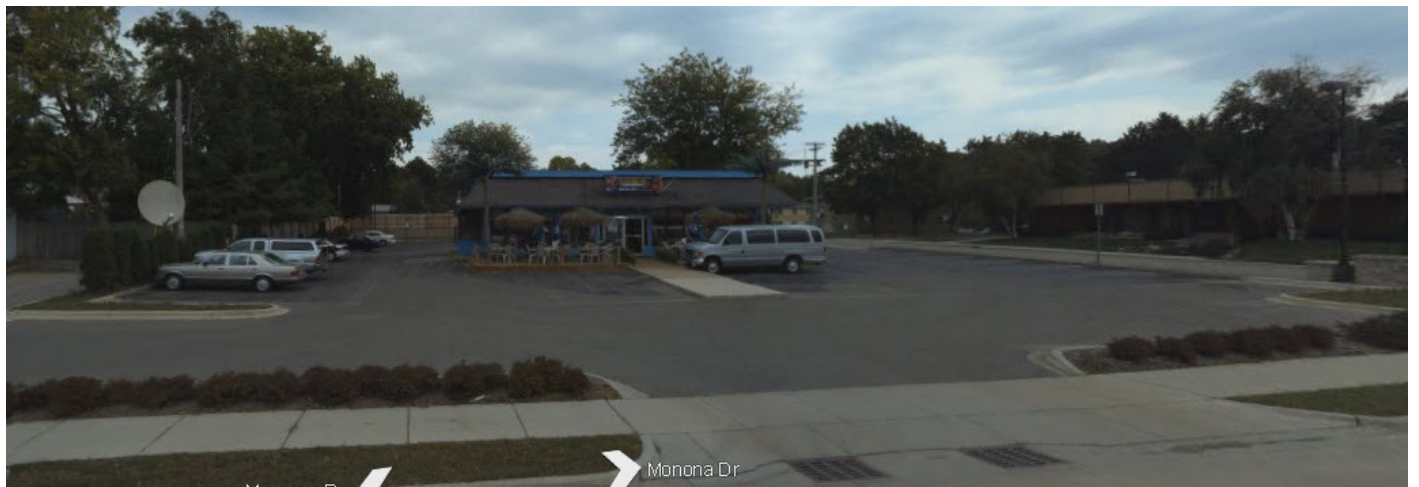
Phone: 608 444 1356

campfred@chorus.net



Note: While care was used in compiling the information contained here in, and is believed to be from reliable sources. The Cascade Group, llc does not warrant or guarantee its accuracy. Investors need to conduct their own independent verification and due diligence.

5696 Monona Drive - Pictures 2017 (page 1)



5696 Monona Drive - Pictures 2010 (prior to remodel)



5696 Monona Drive - Pictures 2010 (prior to remodel)

