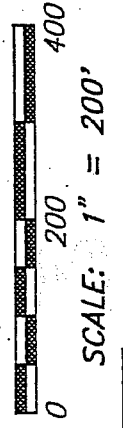
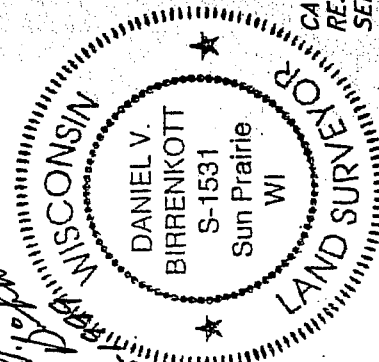


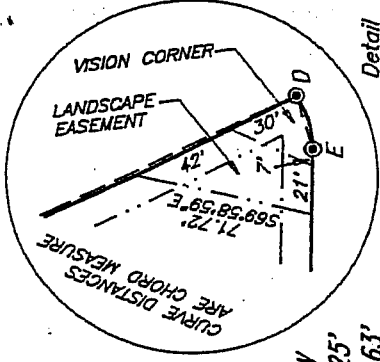
CERTIFIED SURVEY MAP

LOTS 34, 38, AND 39, THIRD ADDITION TO SUN PRAIRIE BUSINESS PARK, AND LOTS 2 AND 3, C.S.M. No. 8418, CITY OF SUN PRAIRIE

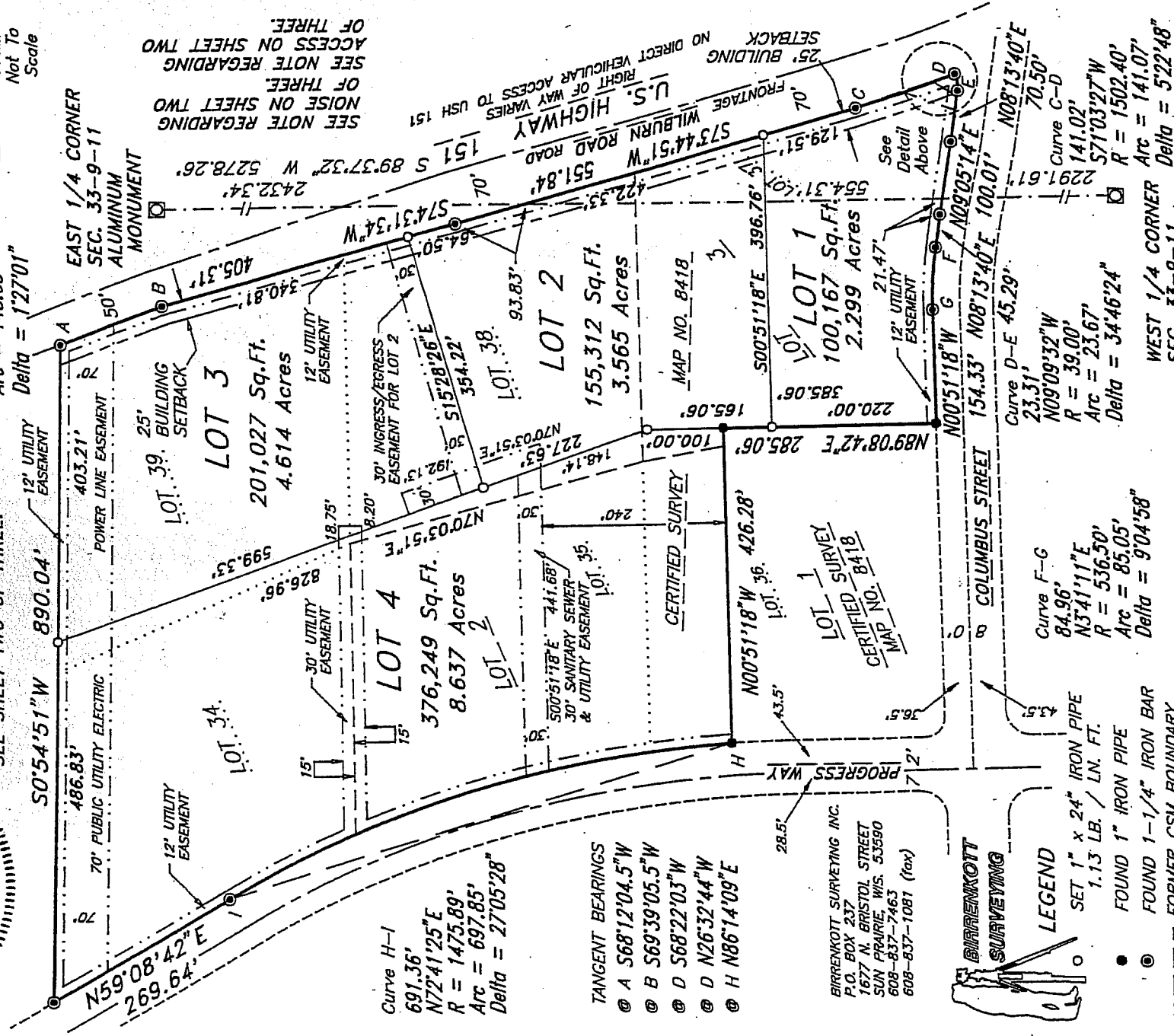


BEARINGS REFERENCED TO THE EAST-WEST 1/4 LINE OF SECTION 33, T9N, R11E.
 BEARING 589°37'32"W
 BEARING 568°55'35"W
 Curve A-B
 143.62'
 R = 5674.25'
 Arc = 143.63'
 Delta = 1°27'01"

CAUTION - HIGHWAY SETBACK RESTRICTIONS PROHIBIT IMPROVEMENTS. SEE SHEET TWO OF THREE.



Detail Not To Scale

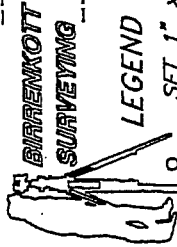


SEE NOTE REGARDING NOISE ON SHEET TWO OF THREE.
 SEE NOTE REGARDING RIGHT OF WAY ACCESS TO USH 151 FRONTAGE

Curve H-1
 691.36'
 N72°41'25"E
 R = 1475.89'
 Arc = 697.85'
 Delta = 27°05'28"

TANGENT BEARINGS
 @ A S68°12'04.5"W
 @ B S69°39'05.5"W
 @ D S68°22'03"W
 @ D N26°32'44"W
 @ H N86°14'09"E

BIRRENKOTT SURVEYING INC.
 P.O. BOX 237
 1677 N. BRISTOL STREET
 SUN PRAIRIE, WIS. 53590
 608-837-7463
 608-837-1081 (fax)



LEGEND
 SET 1" x 24" IRON PIPE 1.13 LB. / LN. FT.
 FOUND 1" IRON PIPE
 FOUND 1-1/4" IRON BAR
 FORMER CSM BOUNDARY

9542

FORMER PLATTED BOUNDARY

CERTIFIED SURVEY MAP NO. 201

VOLUME 54 PAGE 269

DOCUMENT NO. 311225

SHEET 3 OF 3

OFFICE MAP NO. 990160

DOT 13-151-0105-99C

WISCONSIN D.O.T. FILE NO.

WEST 1/4 CORNER Arc = 141.07'
 SEC. 33-9-11 Delta = 5'22'48"

Delta = 34°46'24"
 Arc = 23.67'
 R = 39.00'

Curve D-E 45.29'
 23.31'
 N09°09'32"W
 R = 39.00'

Curve C-D 70.50'
 141.02'
 N08°13'40"E
 R = 1502.40'