



Office Building for Sale

**3510 E. Washington Ave.
Madison, WI 53704**

Key Commercial Real Estate LLC
608-729-1800 | www.keycomre.com



TABLE OF CONTENTS

Property Details.....Pg. 3
Location & DemographicsPg. 4
SitePg. 5
PicturesPg. 6
Broker DisclosurePg. 7



FOR LEASING DETAIL CONTACT:

Annette Gelbach, CCIM
O: 608.242.5622
agelbach@keycomre.com

Beth Iyer
O: 608.729.1811
biyer@keycomre.com

Property Details

OVERVIEW

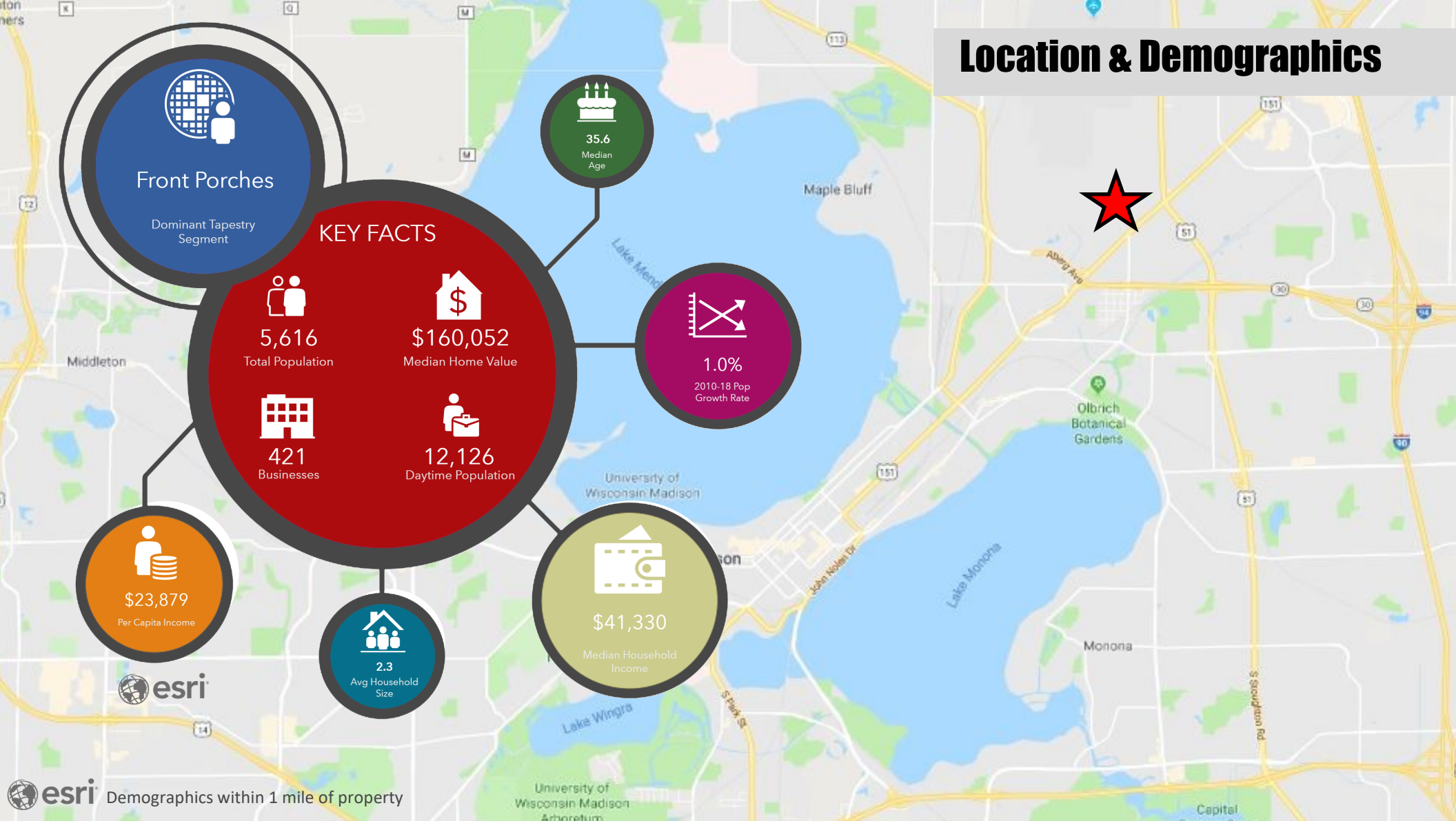
This well maintained office property offers a great opportunity for an owner occupant desiring visibility along busy East Washington Avenue. Private parking behind the building and an additional 2,250sf of basement space make this building a unique find in such a prime location.

HIGHLIGHTS

- \$369,000
- 2,250 SF of Office space with additional 2,250 SF in unfinished basement
- Basement stubbed for future finishing
- New roof
- Built in 1979
- 8,280 SF lot
- Zoned CC-T
- Ample parking behind building



Location & Demographics



	within 5 minutes	within 10 minutes	within 15 minutes
2018 Summary			
Population	21,230	100,703	214,912
Households	9,963	47,046	92,684
Families	4,595	22,535	44,728
Average Household Size	2.12	2.12	2.23
Owner Occupied Housing Units	5,082	24,240	46,493
Renter Occupied Housing Units	4,880	22,806	46,191
Median Age	36.1	36.2	32.7
Median Household Income	\$51,134	\$59,246	\$57,444
Average Household Income	\$62,098	\$76,066	\$75,692

LOCATION HIGHLIGHTS

- Located on Madison's East Side with convenient access to HWYs 30 and 51, as well as HWY 14/18
- Surface parking stalls in rear of the building, accessible from E. Washington Ave
- High visibility with E. Washington Ave frontage
- Easy access to public transportation

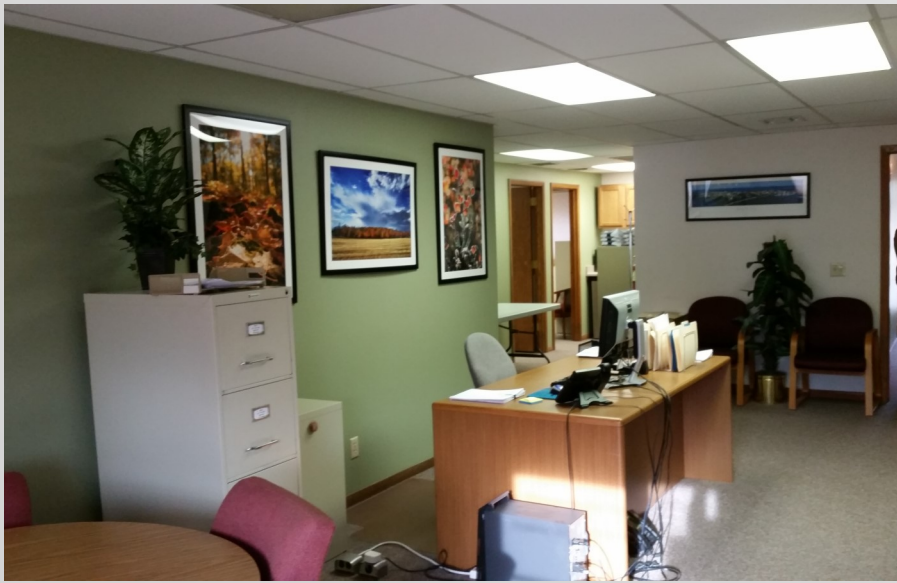


Site

E. Washington Ave - AADT 37,500

Google Earth
Image Landsat / Copernicus

Pictures



BROKER DISCLOSURE TO NON-RESIDENTIAL CUSTOMERS

1 Prior to negotiating on your behalf the Broker must provide you the following disclosure statement:

2 **BROKER DISCLOSURE TO CUSTOMERS**

3 You are a customer of the broker. The broker is either an agent of another party in the transaction or a subagent of another broker
4 who is the agent of another party in the transaction. The broker, or a salesperson acting on behalf of the broker, may provide
5 brokerage services to you. Whenever the broker is providing brokerage services to you, the broker owes you, the customer, the
6 following duties:

7 ■ The duty to provide brokerage services to you fairly and honestly.

8 ■ The duty to exercise reasonable skill and care in providing brokerage services to you.

9 ■ The duty to provide you with accurate information about market conditions within a reasonable time if you request it, unless
10 disclosure of the information is prohibited by law.

11 ■ The duty to disclose to you in writing certain material adverse facts about a property, unless disclosure of the information is
12 prohibited by law (**See Lines 47-55**).

13 ■ The duty to protect your confidentiality. Unless the law requires it, the broker will not disclose your confidential information or the
14 confidential information of other parties (**See Lines 22-39**).

15 ■ The duty to safeguard trust funds and other property the broker holds.

16 ■ The duty, when negotiating, to present contract proposals in an objective and unbiased manner and disclose the advantages and
17 disadvantages of the proposals.

18 Please review this information carefully. A broker or salesperson can answer your questions about brokerage services, but if you
19 need legal advice, tax advice, or a professional home inspection, contact an attorney, tax advisor, or home inspector.

20 This disclosure is required by section 452.135 of the Wisconsin statutes and is for information only. It is a plain-language summary of
21 a broker's duties to a customer under section 452.133 (1) of the Wisconsin statutes.

22 **CONFIDENTIALITY NOTICE TO CUSTOMERS**

23 BROKER WILL KEEP CONFIDENTIAL ANY INFORMATION GIVEN TO BROKER IN CONFIDENCE, OR ANY INFORMATION
24 OBTAINED BY BROKER THAT HE OR SHE KNOWS A REASONABLE PERSON WOULD WANT TO BE KEPT CONFIDENTIAL,
25 UNLESS THE INFORMATION MUST BE DISCLOSED BY LAW OR YOU AUTHORIZE THE BROKER TO DISCLOSE PARTICULAR
26 INFORMATION. A BROKER SHALL CONTINUE TO KEEP THE INFORMATION CONFIDENTIAL AFTER BROKER IS NO LONGER
27 PROVIDING BROKERAGE SERVICES TO YOU.

28 THE FOLLOWING INFORMATION IS REQUIRED TO BE DISCLOSED BY LAW:

29 1. MATERIAL ADVERSE FACTS, AS DEFINED IN SECTION 452.01 (5g) OF THE WISCONSIN STATUTES (**SEE LINES 47-55**).

30 2. ANY FACTS KNOWN BY THE BROKER THAT CONTRADICT ANY INFORMATION INCLUDED IN A WRITTEN INSPECTION
31 REPORT ON THE PROPERTY OR REAL ESTATE THAT IS THE SUBJECT OF THE TRANSACTION.

32 TO ENSURE THAT THE BROKER IS AWARE OF WHAT SPECIFIC INFORMATION YOU CONSIDER CONFIDENTIAL, YOU MAY LIST
33 THAT INFORMATION BELOW (**SEE LINES 35-36**). AT A LATER TIME, YOU MAY ALSO PROVIDE THE BROKER WITH OTHER

34 INFORMATION YOU CONSIDER TO BE CONFIDENTIAL.

35 **CONFIDENTIAL INFORMATION:**

36 _____
37 **NON-CONFIDENTIAL INFORMATION** (The following information may be disclosed by Broker): _____
38 _____

39 *(INSERT INFORMATION YOU AUTHORIZE THE BROKER TO DISCLOSE SUCH AS FINANCIAL QUALIFICATION INFORMATION.)*

40 **CONSENT TO TELEPHONE SOLICITATION**

41 I/We agree that the Broker and any affiliated settlement service providers (for example, a mortgage company or title company) may
42 call our/my home or cell phone numbers regarding issues, goods and services related to the real estate transaction until I/we
43 withdraw this consent in writing. **List Home/Cell Numbers:** _____

44 **SEX OFFENDER REGISTRY**

45 *Notice: You may obtain information about the sex offender registry and persons registered with the registry by contacting the*
46 *Wisconsin Department of Corrections on the Internet at: <http://offender.doc.state.wi.us/public/> or by phone at 608-240-5830.*

47 **DEFINITION OF MATERIAL ADVERSE FACTS**

48 A "material adverse fact" is defined in Wis. Stat. § 452.01(5g) as an adverse fact that a party indicates is of such significance, or that
49 is generally recognized by a competent licensee as being of such significance to a reasonable party, that it affects or would affect
50 the party's decision to enter into a contract or agreement concerning a transaction or affects or would affect the party's decision
51 about the terms of such a contract or agreement. An "adverse fact" is defined in Wis. Stat. § 452.01(1e) as a condition or occurrence
52 that a competent licensee generally recognizes will significantly and adversely affect the value of the property, significantly reduce
53 the structural integrity of improvements to real estate, or present a significant health risk to occupants of the property; or information
54 that indicates that a party to a transaction is not able to or does not intend to meet his or her obligations under a contract or
55 agreement made concerning the transaction.

No representation is made as to the legal validity of any provision or the adequacy of any provision in any specific transaction.

Copyright 2007 by Wisconsin REALTORS® Association

Key Commercial Real Estate LLC, 305 S. Patterson Street Madison, WI 53703

Deborah England

Produced with ZipForm® by zipLogix

Phone: (608)729-1800

Fax:

18070 Fifteen Mile Road, Fraser, Michigan 48026

www.ziplogix.com

Drafted by Attorney Debra Peterson Conrad

Broker Disclosure

Broker Disclosure