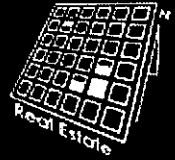


Wisconsin's Top
Municipal Assessors
Since 1959

Associated Appraisal
Consultants, Inc.



[Home](#)

[About Us](#)

[Employment](#)

[Office Locations](#)

[Contact Us](#)

For Home Owners



[Property Search](#)

[Assessment Process](#)

[Assessment Appeal](#)

[Home Owners FAQ](#)

[Important Links](#)

[Sale Questionnaire](#)

[Property Value Review](#)

For Municipalities



[Why Choose Associated?](#)

[Scope of Services](#)

[Municipalities FAQ](#)

[Request a Quote](#)



[Property Search](#)

Assessment Overview

Here is a brief summary of your property

[Back to Search Results](#) | [View Printable Version](#) | [Restart Search](#)

Property Information

[Property Overview](#)

[General Value Data](#)

[Land Data](#)

[Building Data](#)



Additional Information

Look here for resources and other useful information.



Overview

[Back to Top](#)

Assessment Year:

2017

Parcel/Tax Key Number:

291-0815-0923-042

County:

Jefferson

Municipality:

City of Watertown

Address:

1610 Utah St

Zoning:

NB

Legal Description

[Back to Top](#)

BLK 2, BOOMER'S ADD. ALSO S1/2 VAC KANSAS ST. EX PT LYG W OF STH 26. EX PT IN ROW IN DOC 1081720.

General Value Data

[Back to Top](#)

Assessed Land Value:	\$175,000.00
Assessed Improvement Value:	\$150,000.00
Total Assessed Value:	\$325,000.00

Land Data

[Back to Top](#)

Parcel Class	Measurement	Unit of Measure
Commercial:	29,144	Sq Feet

Building Data

[Back to Top](#)

Actual Use:	
Year Built:	1969
Stories:	1
Above Grade SF:	3090

Sale Data

[Back to Top](#)

No sale date available.

Legal Disclaimer

While the data within this site is believed to be correct, no warranty is given or implied as to its accuracy. DO NOT make any decisions to buy or sell real estate based solely on the data presented on this Web site. Verify all pertinent data prior to making any final decisions.

Copyright 2005 Associated Appraisal Consultants, Inc. Hurley, WI Lake Geneva, WI Appleton, WI

While the data within this site is believed to be correct, no warranty is given or implied as to its accuracy. DO NOT make any decisions to buy or sell real estate based solely on the data presented on this Web site. Verify all pertinent data prior to making any final decisions.

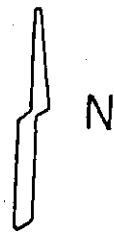
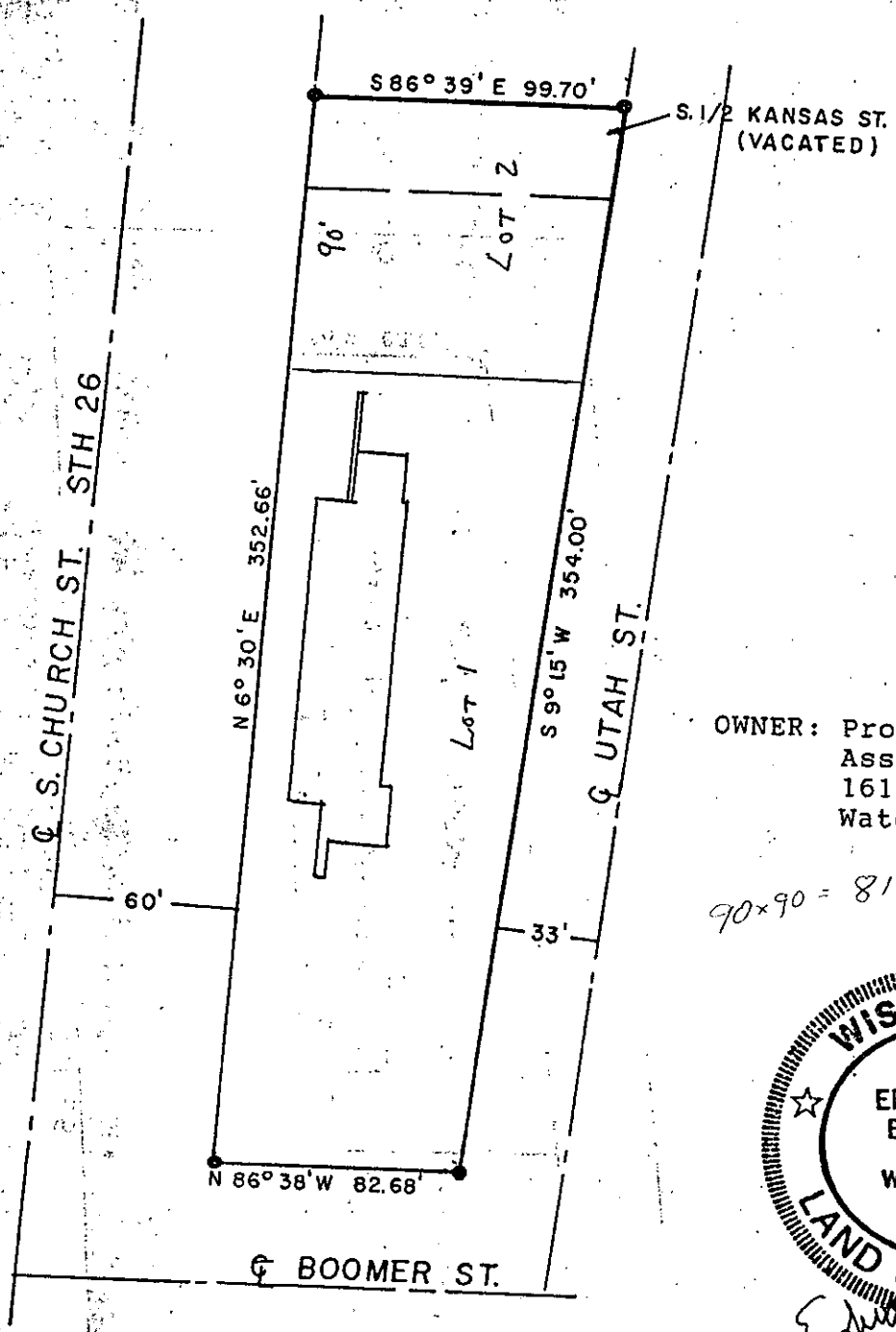
304 W. Leonard St.
Watertown, WI
53098

Item 15

261-0692

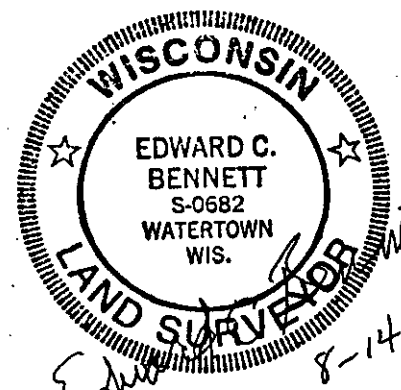
CERTIFIED SURVEY MAP NO. _____

ALL THAT PART OF BLOCK 2 OF BOOMER'S ADDITION TO THE CITY OF WATERTOWN, JEFFERSON COUNTY, WISCONSIN, AND THE SOUTH 1/2 OF KANSAS ST. (VAC.) LYING EAST OF THE EAST LINE OF S. CHURCH ST.



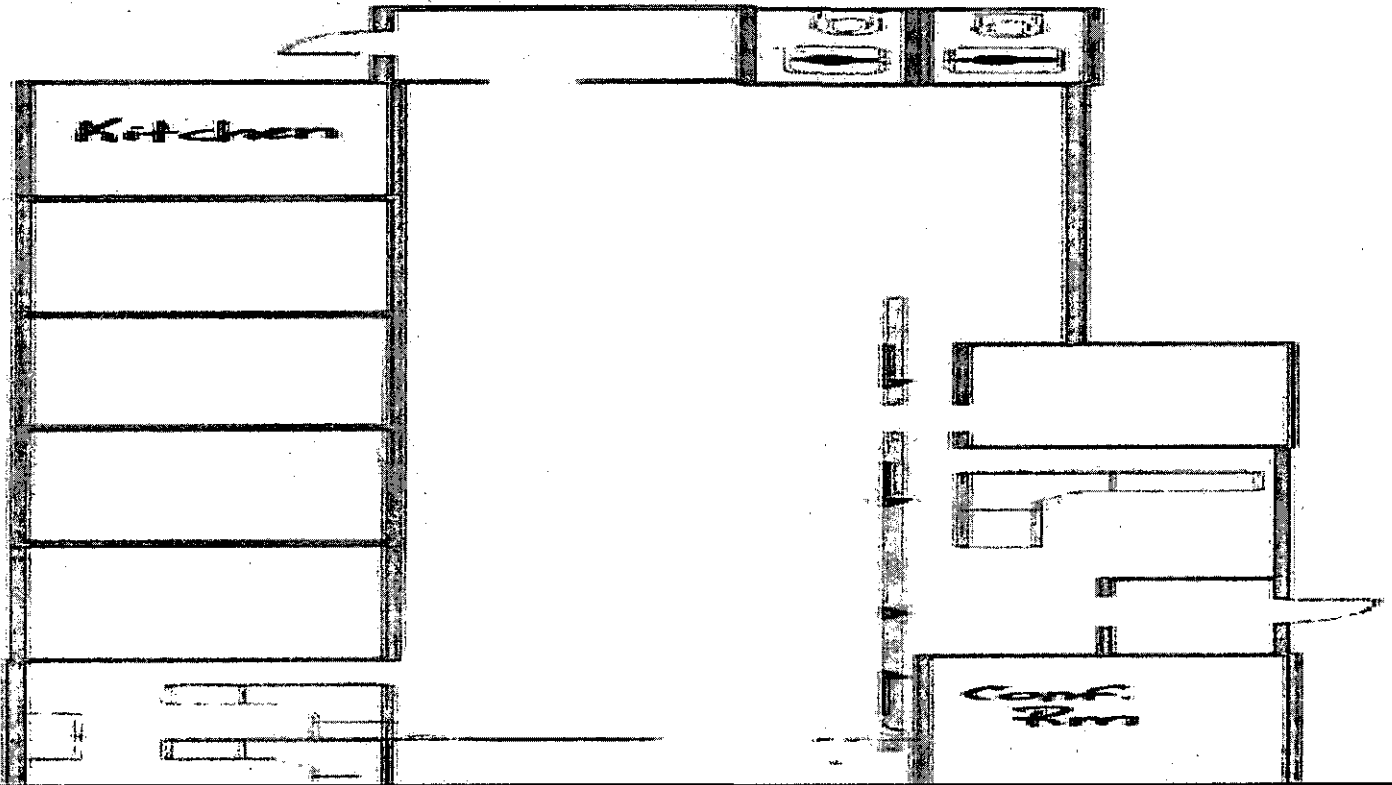
OWNER: Production Credit Association
1610 Utah St.
Watertown, WI

90x90 = 8100 sq

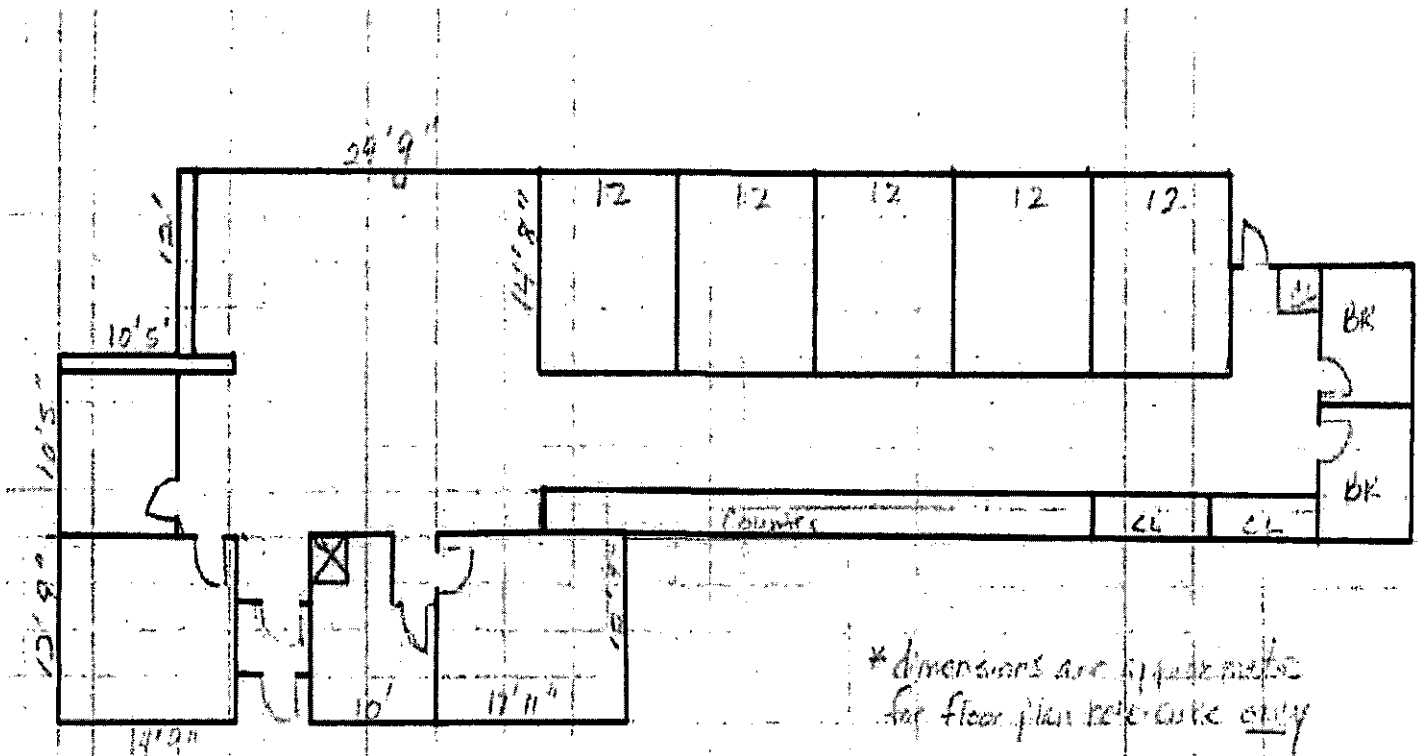


Edward C. Bennett
8-14-95

Property Photos



Floor Plan



Floor Plan