

# VACANT LAND FOR SALE

## HIGHWAY 18 / 151

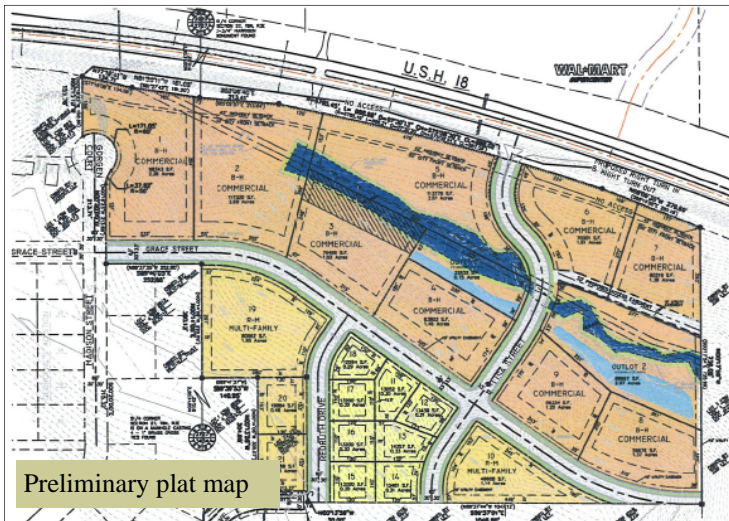
Dodgeville, WI

### 29 Acres Available

(25 acres buildable)

Area Population:  
Approx. 5,000

This site offers outstanding visibility from Hwy 18, easy access to Hwy 51 and prime development opportunities.



**Surrounding Retail:**  
Super Wal-Mart,  
Walgreens, Culvers,  
Super 8 Hotel, Pizza  
Hut, Lands End  
Corporate Headquarters

**Zoning:** Preliminary plat pending with zoning for highway commercial, multifamily residential and single family residential.

**VERY  
MOTIVATED  
SELLERS!**



## The Gialamas Company, Inc.

8020 EXCELSIOR DRIVE MADISON, WI 53717

(608) 836-8000 [www.gialamas.com](http://www.gialamas.com)

All information furnished has been collected from sources believed reliable, but no warranty or representation is made to the accuracy and the completeness of the information contained herein. Prices are subject to change without notice.