

For Lease



6720 Frank Lloyd Wright Ave

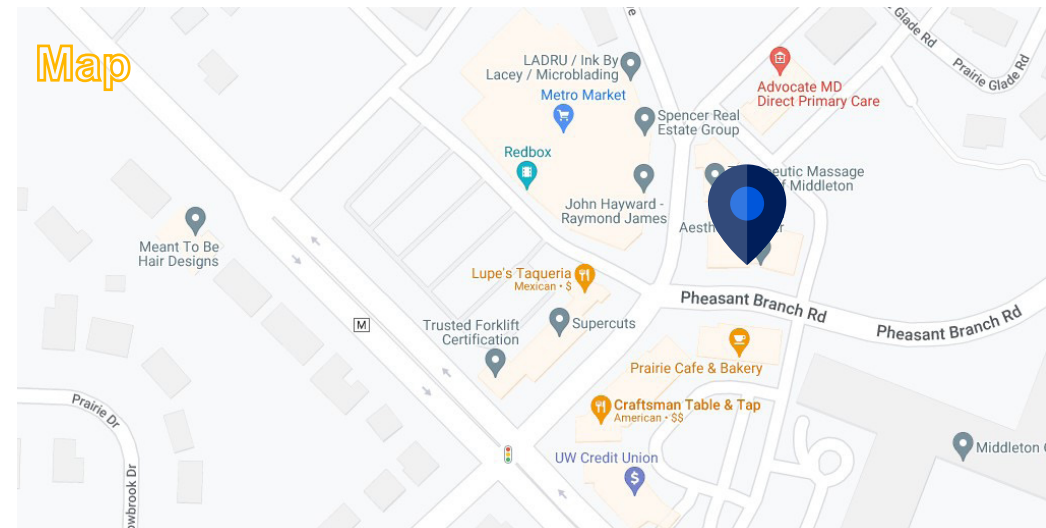
Middleton, WI 53562

Space Profile

| | |
|---------------------|--|
| Premises | 1st Floor directly off lobby entrance |
| Size | 1,058 SF - 4,169 SF |
| Asking Rent | \$24.50 MG + janitorial and utilities |
| Availability | Immediate |
| Submarket | Middleton Hills |
| Parking | Surface Parking Parking Ratio: 4.5/1,000 SF |

Features

- Building lobby and retail entry available
- Class A building with shared gym and locker room facilities
- Building signage available
- Unique Urban-Suburban setting: Middleton Hills offers a one-of-a-kind environment with urban amenities and walkability in a suburban market
- Coffee shops, restaurants, bars and other retailers are within walking distance
- In addition, lower level storage is available for rent



For More Information

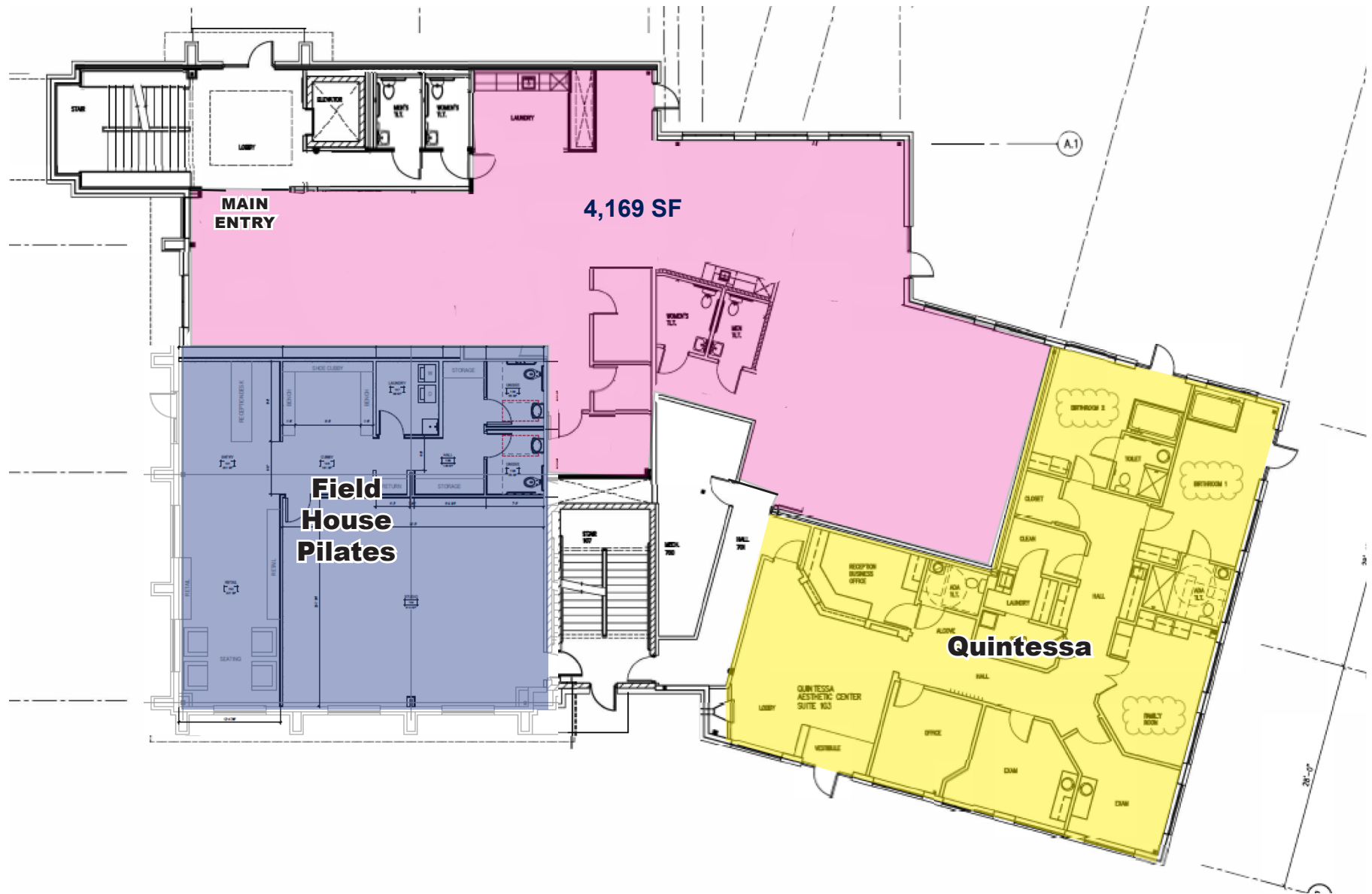


Ross Rikers
608.239.7724
rrikkers@cresa.com

FLOOR PLAN

6720 Frank Lloyd Wright

OPTION #1



FLOOR PLAN

6720 Frank Lloyd Wright

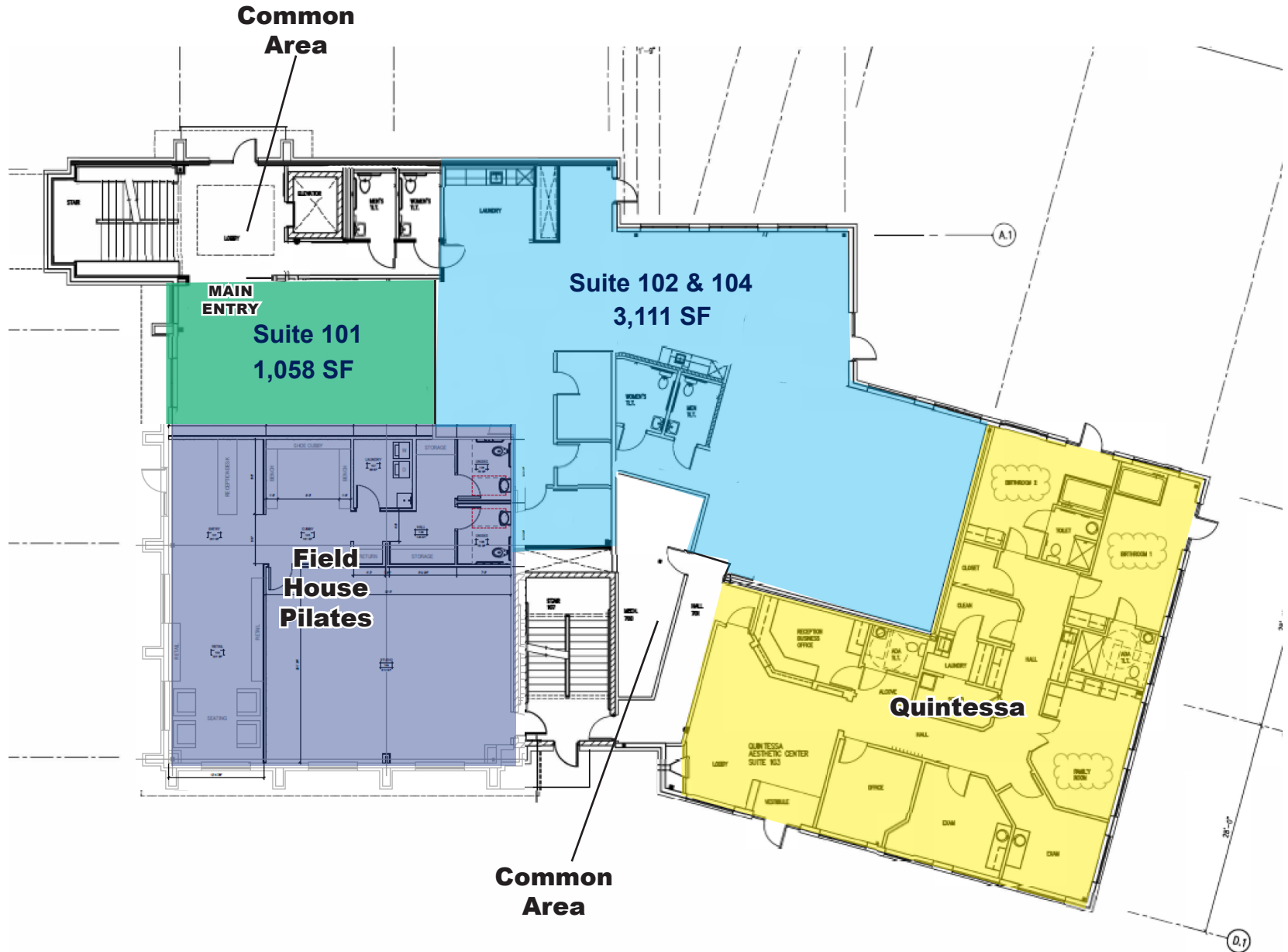
OPTION #2



FLOOR PLAN

6720 Frank Lloyd Wright

OPTION #3





cresa

6720 Frank Lloyd Wright
Middleton, WI 53562

