

Commercial Space For Lease

1025 N Sherman Ave Madison WI 53704

Restaurant Building

0.463 Acre Lot / 6,256 sq.ft + 5,244 sq.ft. Basement



6,256 sq.ft. Free standing restaurant building (Former Esquire Supper Club) zoned CC-T located on the corner of N. Sherman Ave and Roth St. just 3 blocks from Maple Bluff Country Club and only 3.5 miles from downtown Madison. There is a monument sign located on the corner lot for great visibility, ample parking onsite, bar area, dining area, large kitchen setup for in house service and catering and **an additional 5,244 sq.ft. in the basement.** Don't miss out on this turnkey location in a sought-after location.

| | |
|----------------------------|--|
| Rent | \$6,256/month + \$2,228/month NNN fees |
| Date Available | Now |
| Square Feet (approx.) | 6,256 sq.ft. main level + 5,244 sq.ft in lower level |
| Tenant is responsible for: | Gas, electric, water sewer, trash removal, lawn care, snow removal, parking lot maintenance & NNN fees |

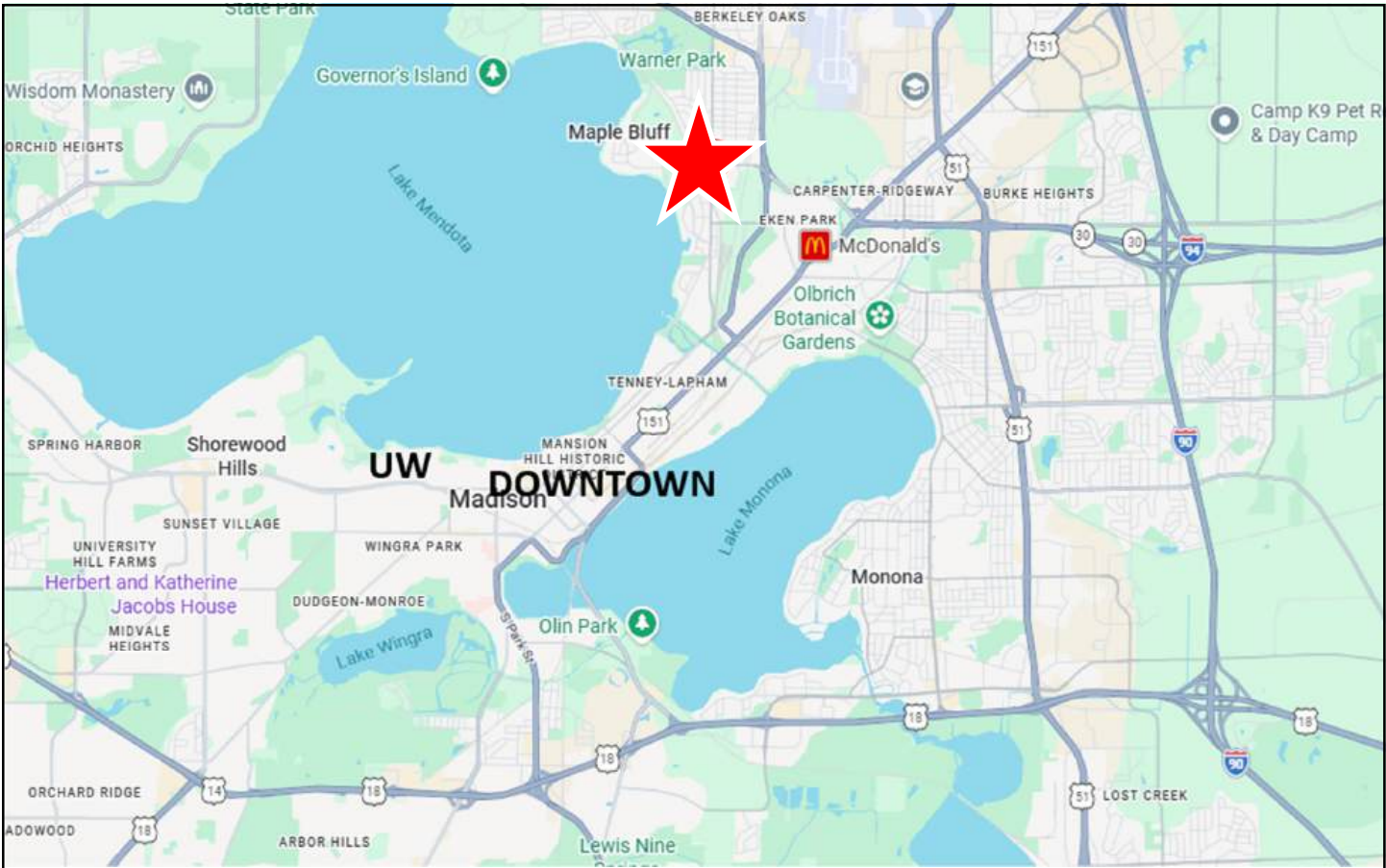


James Stoppie - jim@madisonproperty.com

Direct Line (608) 268-4912 - Office (608) 251-8777 - Fax (608) 255-9656

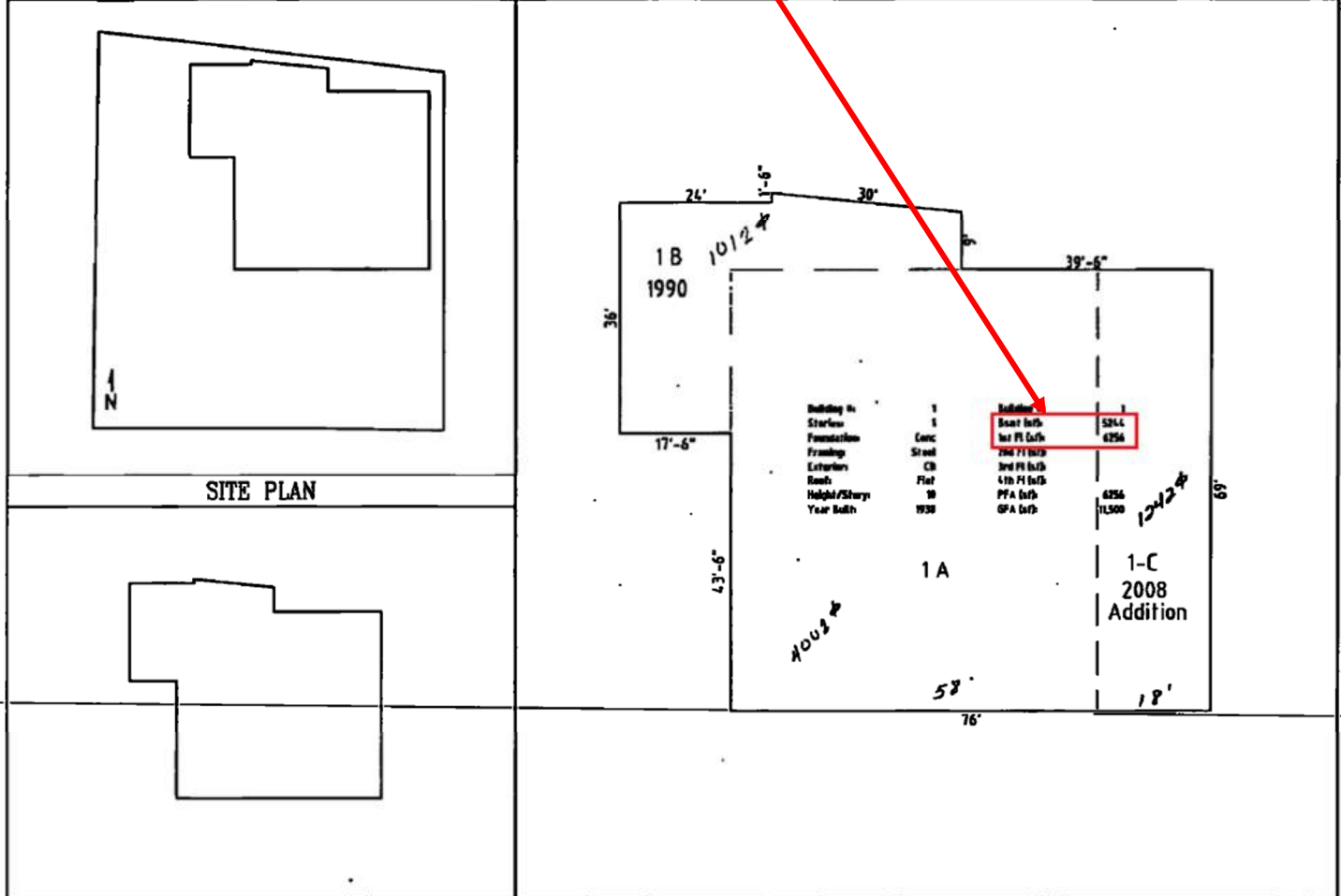
Tony Xiong - tony@madisonproperty.com - Direct Line (608) 268-4987

www.madisonproperty.com/realestate



Per Assessor:
 First floor area of 6,256 sqft.
 Basement area of 5,244 sqft

PARCEL NUMBER: 0810-313-0089-1 ADDRESS: 1025 North Sherman Avenue AREA: 9912 TYPE: COM



| TOP VIEW | FLOOR PLAN |
|---|---|
| MADISON CITY ASSESSOR COMMERCIAL PROPERTY FIELD CARD | Building # 1 Stories 1 Foundation Conc Framing Steel Exterior CB Roof Flat Height/Story 10 Year Built 1938 Building # 1-C 1st Fl GrFt 5244 1st Fl GrFt 6256 2nd Fl GrFt 3rd Fl GrFt 4th Fl GrFt PFA GrFt 6256 GPA GrFt 11500 |

Parcel Number: 0810-313-0089-1 Property Address: 1025 N Sherman Ave
 2026 Assessment Year -- 2026 -- City of Madison, WI -- 2026 --

| Land Information | | | | | | | |
|----------------------------------|--------------------|--------|---------|--------|-------|-----------------|--------|
| Land Line | Tax Classification | Acres | Sq. Ft. | Width | Depth | Unit of Measure | Units |
| 1 | Commercial | 0.4634 | 20,186 | 155.20 | 0.00 | SF | 20,186 |
| 2 | Commercial | | 0 | 137.26 | | SITE | 0.00 |
| Total Real Estate - All Columns: | | 0.4634 | 20,186 | | | | |

| Building Summary | | | | | | | | |
|------------------|------------|-------|-------------|------------|-------|-----------|-------|--|
| Bldg # | Tax Class | Style | Class/Const | Year Built | Grade | Condition | Area | |
| 1-1 | Commercial | C-28 | C-3 | 1938 | C-1 | | 8,004 | |
| 1-2 | Commercial | C-28 | C-3 | 1990 | C-1 | | 1,012 | |
| 1-3 | Commercial | C-28 | C-3 | 2008 | C-1 | | 2,484 | |

Exterior Photos



Exterior Photos







(Interior Photos)





(Interior Photos)



(Interior Photos)



(Interior Photos)



DISCLOSURE TO NON-RESIDENTIAL CUSTOMERS

1 Prior to negotiating on your behalf the brokerage firm, or an agent associated with the firm, must provide you the
2 following disclosure statement:

3 **DISCLOSURE TO CUSTOMERS** You are a customer of the brokerage firm (hereinafter Firm). The Firm is either an agent
4 of another party in the transaction or a subagent of another firm that is the agent of another party in the transaction. A
5 broker or a salesperson acting on behalf of the Firm may provide brokerage services to you. Whenever the Firm is
6 providing brokerage services to you, the Firm and its brokers and salespersons (hereinafter Agents) owe you, the
7 customer, the following duties:

- 8 (a) The duty to provide brokerage services to you fairly and honestly.
- 9 (b) The duty to exercise reasonable skill and care in providing brokerage services to you.
- 10 (c) The duty to provide you with accurate information about market conditions within a reasonable time if you request
11 it, unless disclosure of the information is prohibited by law.
- 12 (d) The duty to disclose to you in writing certain Material Adverse Facts about a property, unless disclosure of the
13 information is prohibited by law (see lines 42-51).
- 14 (e) The duty to protect your confidentiality. Unless the law requires it, the Firm and its Agents will not disclose your
15 confidential information or the confidential information of other parties (see lines 23-41).
- 16 (f) The duty to safeguard trust funds and other property held by the Firm or its Agents.
- 17 (g) The duty, when negotiating, to present contract proposals in an objective and unbiased manner and disclose the
18 advantages and disadvantages of the proposals.

19 Please review this information carefully. An Agent of the Firm can answer your questions about brokerage services,
20 but if you need legal advice, tax advice, or a professional home inspection, contact an attorney, tax advisor, or home
21 inspector. This disclosure is required by section 452.135 of the Wisconsin statutes and is for information only. It is a
22 plain-language summary of the duties owed to a customer under section 452.133(1) of the Wisconsin statutes.

23 **CONFIDENTIALITY NOTICE TO CUSTOMERS** The Firm and its Agents will keep confidential any information given to the
24 Firm or its Agents in confidence, or any information obtained by the Firm and its Agents that a reasonable person
25 would want to be kept confidential, unless the information must be disclosed by law or you authorize the Firm to
26 disclose particular information. The Firm and its Agents shall continue to keep the information confidential after the
27 Firm is no longer providing brokerage services to you.

28 The following information is required to be disclosed by law:

- 29 1. Material Adverse Facts, as defined in Wis. Stat. § 452.01(5g) (see lines 42-51).
- 30 2. Any facts known by the Firm or its Agents that contradict any information included in a written inspection
31 report on the property or real estate that is the subject of the transaction.

32 To ensure that the Firm and its Agents are aware of what specific information you consider confidential, you may
33 list that information below (see lines 35-41) or provide that information to the Firm or its Agents by other means. At a
34 later time, you may also provide the Firm or its Agents with other information you consider to be confidential.

35 **CONFIDENTIAL INFORMATION:** _____
36 _____
37 _____

38 **NON-CONFIDENTIAL INFORMATION** (the following information may be disclosed by the Firm and its Agents): _____
39 _____
40 _____

41 _____ *(Insert information you authorize to be disclosed, such as financial qualification information.)*

42 **DEFINITION OF MATERIAL ADVERSE FACTS**

43 A "Material Adverse Fact" is defined in Wis. Stat. § 452.01(5g) as an Adverse Fact that a party indicates is of such
44 significance, or that is generally recognized by a competent licensee as being of such significance to a reasonable
45 party, that it affects or would affect the party's decision to enter into a contract or agreement concerning a transaction
46 or affects or would affect the party's decision about the terms of such a contract or agreement.

47 An "Adverse Fact" is defined in Wis. Stat. § 452.01(1e) as a condition or occurrence that a competent licensee
48 generally recognizes will significantly and adversely affect the value of the property, significantly reduce the structural
49 integrity of improvements to real estate, or present a significant health risk to occupants of the property; or information
50 that indicates that a party to a transaction is not able to or does not intend to meet his or her obligations under a
51 contract or agreement made concerning the transaction.

52 **NOTICE ABOUT SEX OFFENDER REGISTRY** You may obtain information about the sex offender registry and persons
53 registered with the registry by contacting the Wisconsin Department of Corrections on the Internet at
54 <http://www.doc.wi.gov> or by telephone at 608-240-5830.