

UNDER NEW OWNERSHIP!



Office Space For Lease

HARVESTER BUILDING

**301 S. Blount Street
Madison, WI**

Key Commercial Real Estate LLC | 608-729-1800 | www.keycomre.com

Jenny Lisak, CCIM, Principal
608-513-5447 (m)
608-729-1808 (o)
jlisak@keycomre.com

Mallory Rekoske, Principal
608-469-0384 (m)
608-729-1803 (o)
mrekoske@keycomre.com

Property Details

HISTORIC OFFICE BUILDING NOW UNDER NEW OWNERSHIP!

Located heart of the Cap East District between E. Washington Avenue and Willy Street, the Harvester office building is a Madison icon. This landmark property, originally built in the late 1890s, was meticulously renovated in the early 2000s. With exposed wood ceilings, massive windows and cream brick, the Harvester offers a functional design while featuring unmatched historic charm.

Space Available: 2,310 - 5,326 RSF

Parking: Free Parking (2.5/1000 ratio)

Base Rent: \$28.00 Gross

(excludes in-suite janitorial)

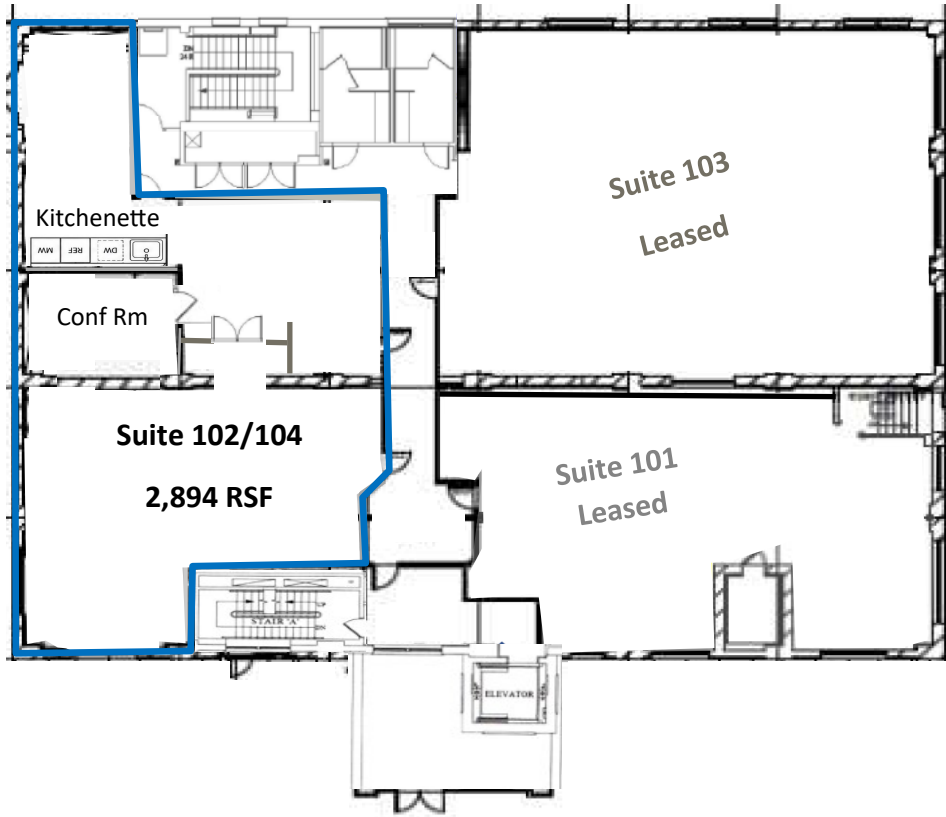
- Onsite surface parking and covered parking in adjacent ramp available to tenants at no cost
- Monument sign for tenant signage
- Lower Level storage space available
- Variety of suite sizes and layouts
- Ample natural light
- Walking distance to multiple restaurants on E. Wash, Willy Street and Capitol Square
- Located on bike path
- Now under new ownership and management



Available Suites—1st Floor

Suite 102/104:

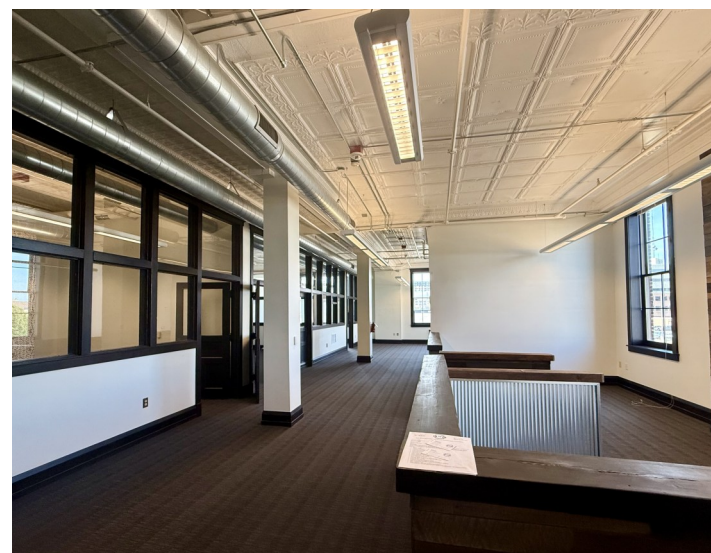
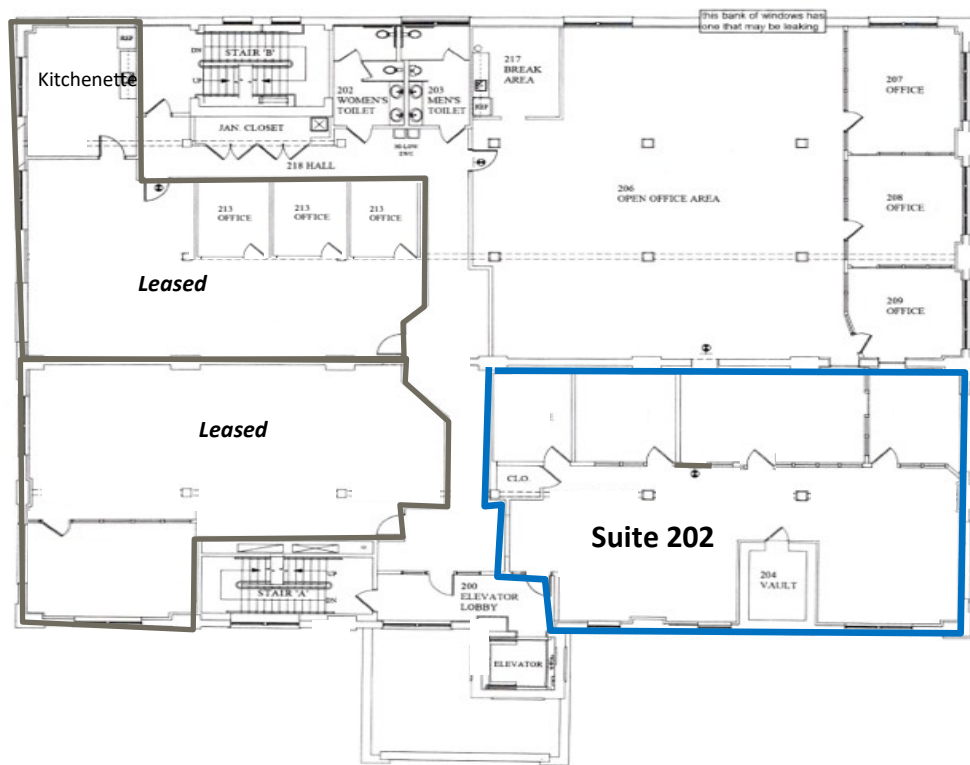
- 2,894 RSF
- \$28.00 gross (excl. in-suite janitorial)
- Open work area
- Kitchenette
- Conference room
- Exposed ceilings/duct work
- Wood floors/carpet



Available Suites—2nd Floor

Suite 202:

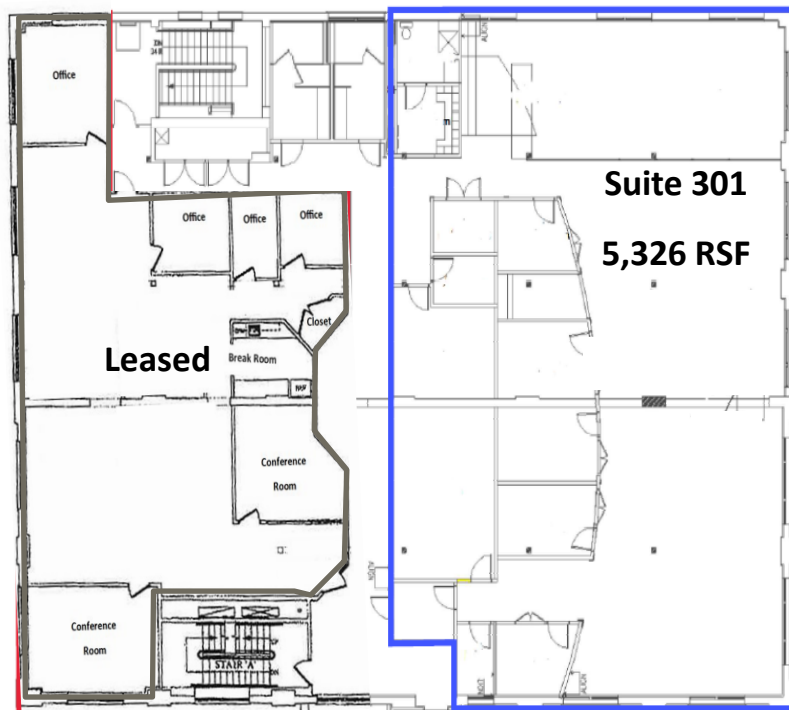
- 2,310 RSF
- \$28.00 gross (excl. in-suite janitorial)
- Built in reception area
- 3 glass offices and 1 conf. room
- Open work area
- Tin ceiling



Available Suites—3rd Floor

Suite 301:

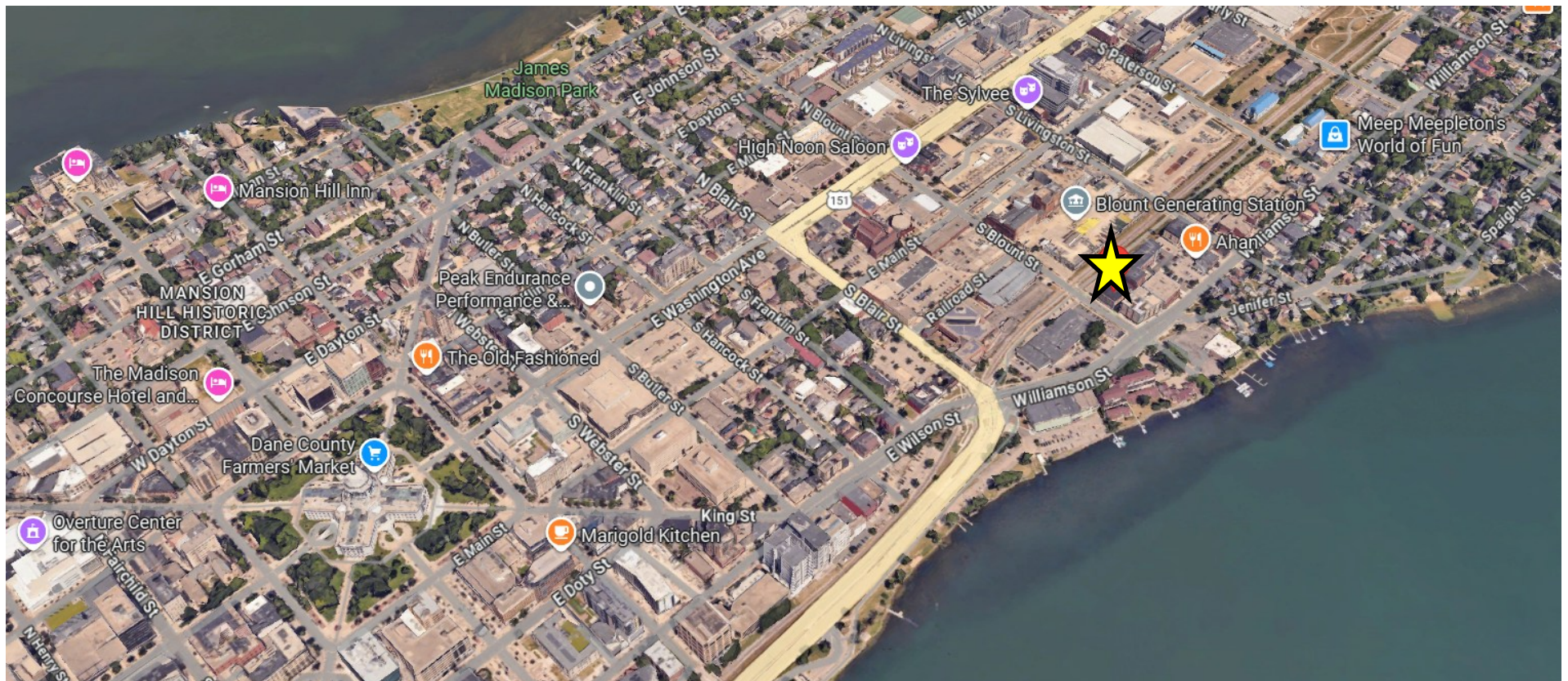
- 5,326 RSF
- \$28.00 gross (excl. in-suite janitorial)
- Exposed ceilings & brick
- Kitchenette



Location



- Property is 1 block from Willy Street
- 3 blocks from E. Washington Ave entertainment district
- Located along Capital City Bike Path
- Within walking distance to Capitol Square
- Onsite parking, adjacent covered parking & street parking





DISCLOSURE TO NON-RESIDENTIAL CUSTOMERS

1 Prior to negotiating on your behalf the brokerage firm, or an agent associated with the firm, must provide you the
2 following disclosure statement:

3 **DISCLOSURE TO CUSTOMERS** You are a customer of the brokerage firm (hereinafter Firm). The Firm is either an agent
4 of another party in the transaction or a subagent of another firm that is the agent of another party in the transaction. A
5 broker or a salesperson acting on behalf of the Firm may provide brokerage services to you. Whenever the Firm is
6 providing brokerage services to you, the Firm and its brokers and salespersons (hereinafter Agents) owe you, the
7 customer, the following duties:

- 8 (a) The duty to provide brokerage services to you fairly and honestly.
- 9 (b) The duty to exercise reasonable skill and care in providing brokerage services to you.
- 10 (c) The duty to provide you with accurate information about market conditions within a reasonable time if you request
11 it, unless disclosure of the information is prohibited by law.
- 12 (d) The duty to disclose to you in writing certain Material Adverse Facts about a property, unless disclosure of the
13 information is prohibited by law (see lines 42-51).
- 14 (e) The duty to protect your confidentiality. Unless the law requires it, the Firm and its Agents will not disclose your
15 confidential information or the confidential information of other parties (see lines 23-41).
- 16 (f) The duty to safeguard trust funds and other property held by the Firm or its Agents.
- 17 (g) The duty, when negotiating, to present contract proposals in an objective and unbiased manner and disclose the
18 advantages and disadvantages of the proposals.

19 Please review this information carefully. An Agent of the Firm can answer your questions about brokerage services,
20 but if you need legal advice, tax advice, or a professional home inspection, contact an attorney, tax advisor, or home
21 inspector. This disclosure is required by section 452.135 of the Wisconsin statutes and is for information only. It is a
22 plain-language summary of the duties owed to a customer under section 452.133(1) of the Wisconsin statutes.

23 **CONFIDENTIALITY NOTICE TO CUSTOMERS** The Firm and its Agents will keep confidential any information given to the
24 Firm or its Agents in confidence, or any information obtained by the Firm and its Agents that a reasonable person
25 would want to be kept confidential, unless the information must be disclosed by law or you authorize the Firm to
26 disclose particular information. The Firm and its Agents shall continue to keep the information confidential after the
27 Firm is no longer providing brokerage services to you.

28 The following information is required to be disclosed by law:

- 29 1. Material Adverse Facts, as defined in Wis. Stat. § 452.01(5g) (see lines 42-51).
- 30 2. Any facts known by the Firm or its Agents that contradict any information included in a written inspection
31 report on the property or real estate that is the subject of the transaction.
- 32 To ensure that the Firm and its Agents are aware of what specific information you consider confidential, you may
33 list that information below (see lines 35-41) or provide that information to the Firm or its Agents by other means. At a
34 later time, you may also provide the Firm or its Agents with other information you consider to be confidential.

35 **CONFIDENTIAL INFORMATION:**

36 _____

37 _____

38 **NON-CONFIDENTIAL INFORMATION** (the following information may be disclosed by the Firm and its Agents):

39 _____

40 _____

41 _____ *(Insert information you authorize to be disclosed, such as financial qualification information.)*

42 **DEFINITION OF MATERIAL ADVERSE FACTS**

43 A "Material Adverse Fact" is defined in Wis. Stat. § 452.01(5g) as an Adverse Fact that a party indicates is of such
44 significance, or that is generally recognized by a competent licensee as being of such significance to a reasonable
45 party, that it affects or would affect the party's decision to enter into a contract or agreement concerning a transaction
46 or affects or would affect the party's decision about the terms of such a contract or agreement.

47 An "Adverse Fact" is defined in Wis. Stat. § 452.01(1e) as a condition or occurrence that a competent licensee
48 generally recognizes will significantly and adversely affect the value of the property, significantly reduce the structural
49 integrity of improvements to real estate, or present a significant health risk to occupants of the property; or information
50 that indicates that a party to a transaction is not able to or does not intend to meet his or her obligations under a
51 contract or agreement made concerning the transaction.

52 **NOTICE ABOUT SEX OFFENDER REGISTRY** You may obtain information about the sex offender registry and persons
53 registered with the registry by contacting the Wisconsin Department of Corrections on the Internet at
54 <http://www.doc.wi.gov> or by telephone at 608-240-5830.

No representation is made as to the legal validity of any provision or the adequacy of any provision in any specific transaction.
Copyright © 2016 by Wisconsin REALTORS® Association
Drafted by Attorney Debra Peterson Conrad

Key Commercial Real Estate LLC, 211 S. Paterson Street, Suite 320 Madison, WI 53703

Phone: 608/729-1800

Fax:

Flyer Non-Disclosure

Produced with zipForm® by zipLogix | 18070 Fifteen Mile Road, Fraser, Michigan 48026 | www.zipLogix.com