





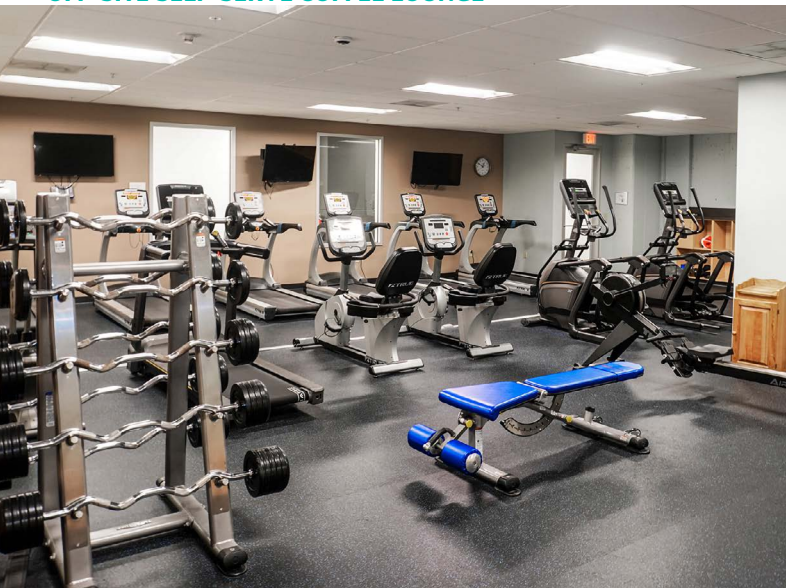
**1350 Deming Way** is a Class A office building offering approximately 69,800 square feet of leasable space with recently updated lobbies, common areas, and spec suites available for immediate occupancy. Constructed in 1995, the property provides excellent access to the West Beltline Highway and is located near Greenway Station's dining and shopping options. The building features underground heated parking, a conference room, and a tenant lounge with kitchenette, and is directly connected to the Wisconsin Trade Center via sky-walk, allowing tenants access to an expanded amenity suite including a fitness center with locker rooms and showers, conference center, atrium, outdoor patio, lounge with fireplace, coffee bar, and recreational spaces, creating a highly connected and amenity rich workplace environment.

## SPACE & PROPERTY HIGHLIGHTS

Building Size	70,276 SF
Available Space	SUITE 18 • 7,068 SF SUITE 240 • 2,834 SF SUITE 300 • 16,909 SF SPEC SUITE 420 • 3,068 SF SPEC SUITE 440 • 3,606 SF SPEC SUITE 460 • 3,174 SF
Floors	5
Building Hours	7:00 AM - 5:30 PM   M-F
Signage	Monument & building signage available
Parking	2.59/1000 954 Stalls, 48 Underground



**OFF-SITE SELF-SERVE COFFEE LOUNGE**



**ON-SITE FITNESS CENTERS**



**OFF-SITE GOLF LOUNGE**



## AMENITIES

### ON-SITE:

- Two-Story Open Lobby
- Two Outdoor Patios
- Workout Facilities
- Mother's Room
- Ample Surface Parking and Loading Dock
- Back-Up Generator

### SHARED/OFF-SITE:

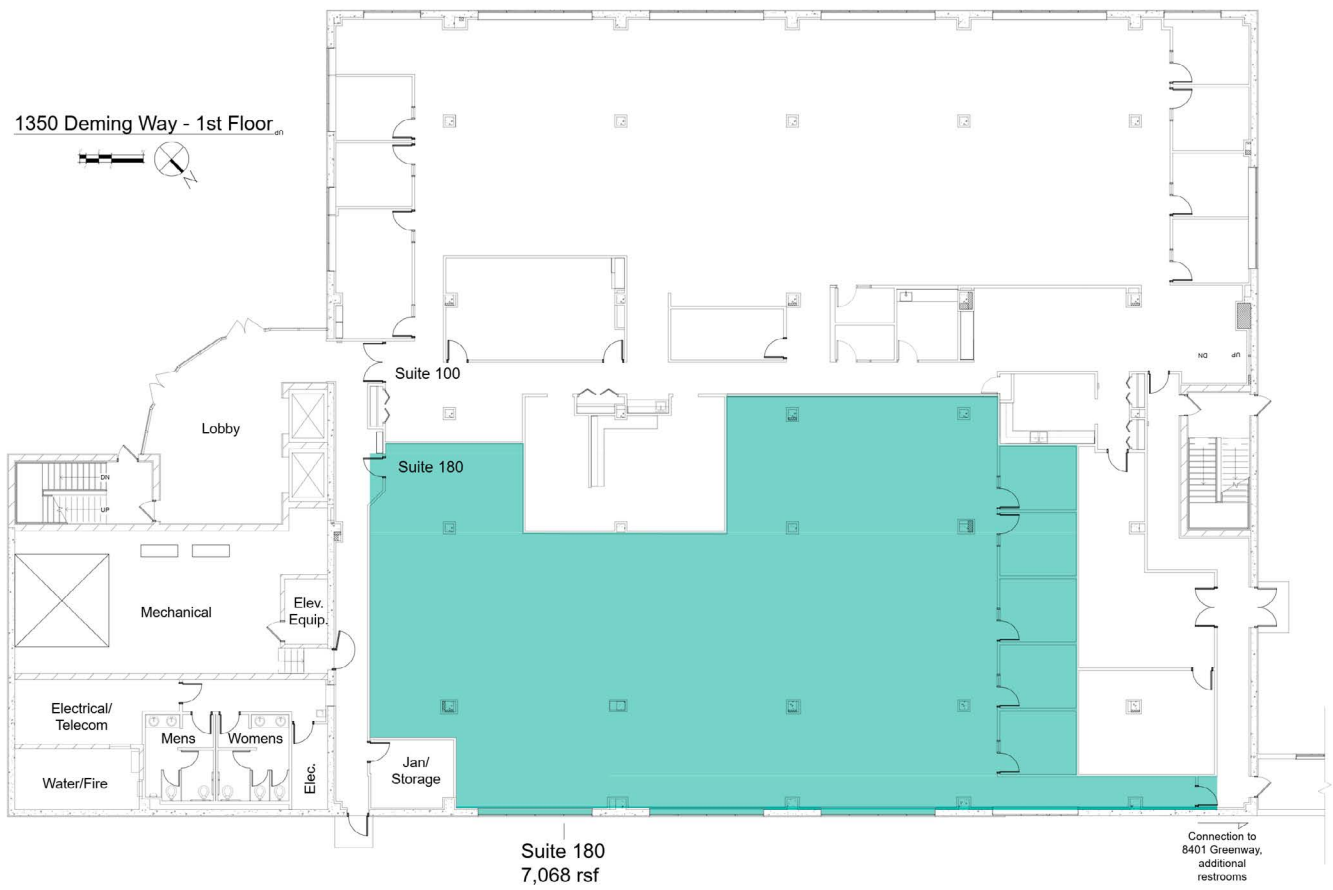
- Full Service Cafe
- Multiple No-Fee Workout Facilities
- Golf Simulator Lounges
- Self-Serve Coffee Lounges
- Conference Centers and Board Rooms

### FOR MORE INFORMATION:

<https://madison.rfaassetmanagement.ca>

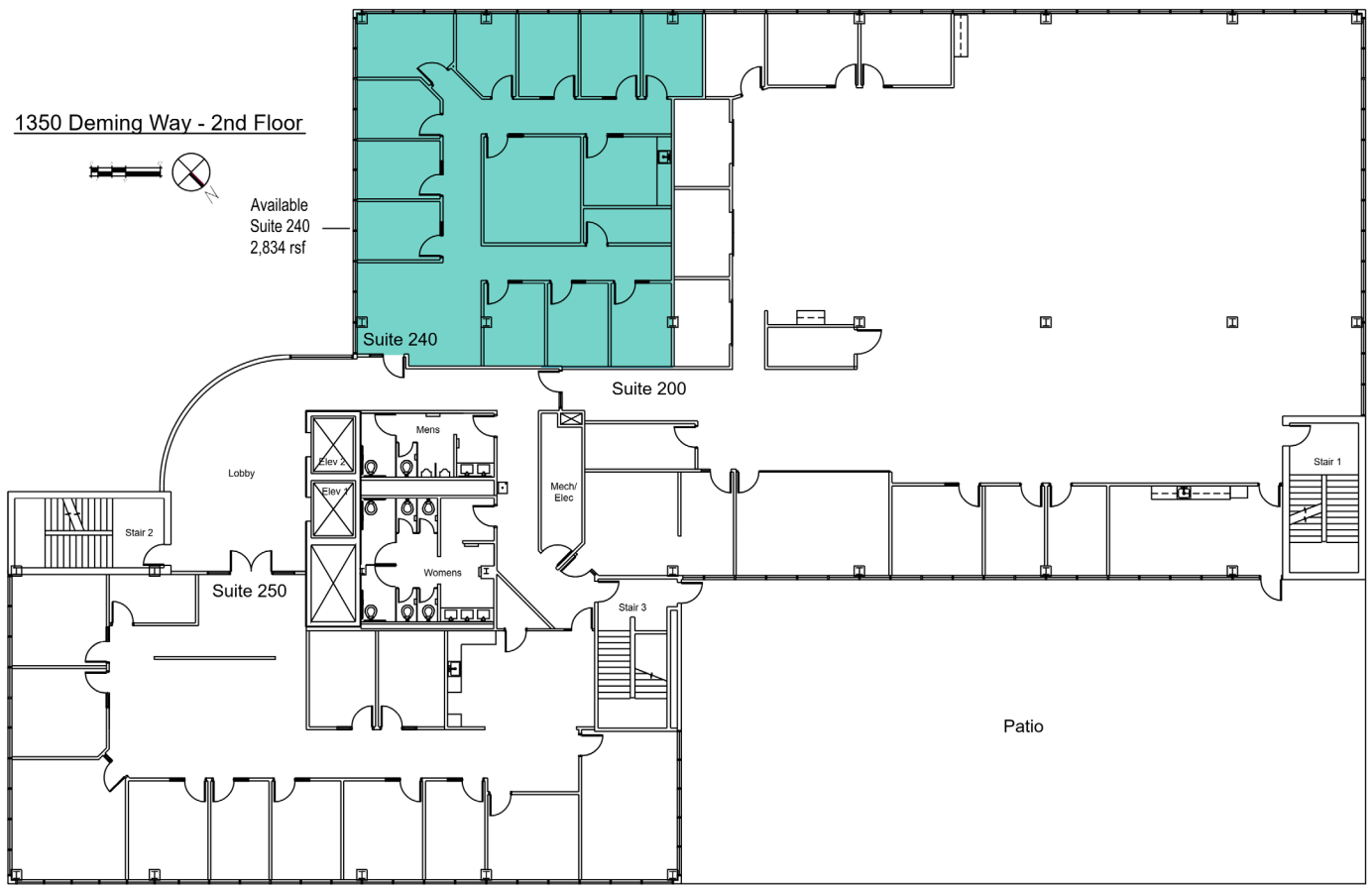
# AVAILABLE SUITES

Unit #	Size	Availability
180	7,068 SF	Immediately



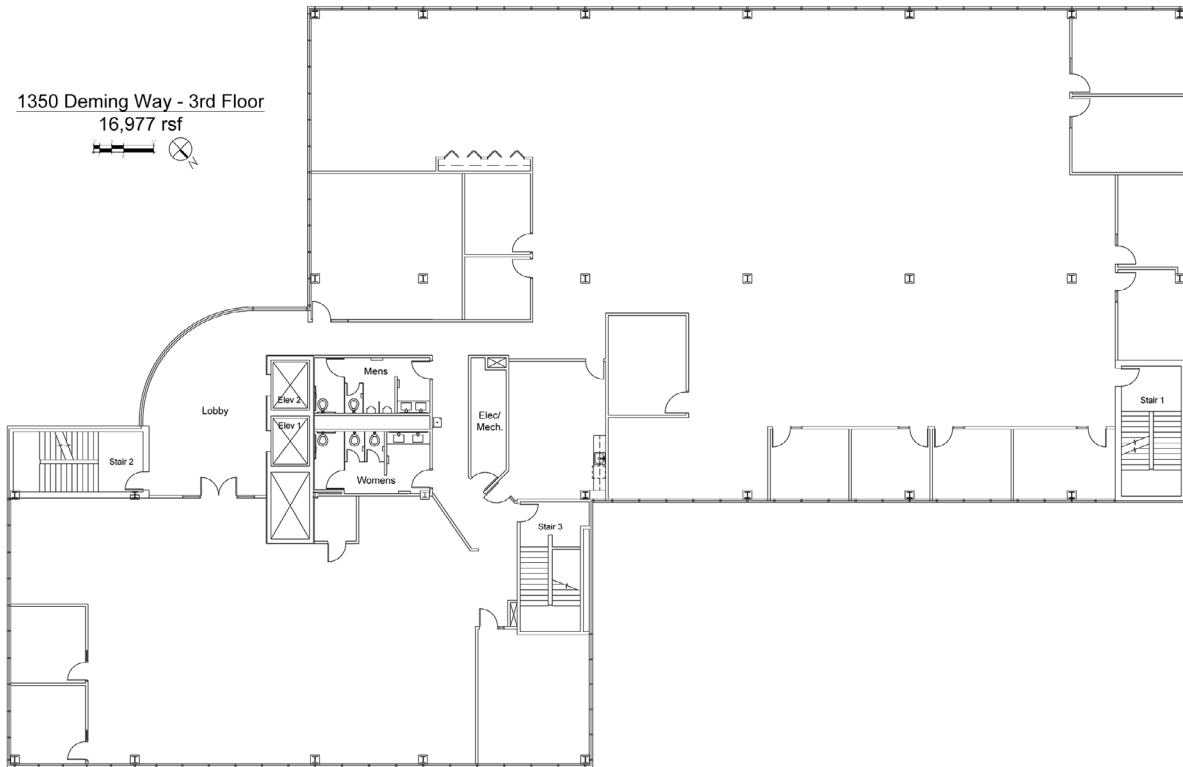
# AVAILABLE SUITES

Unit #	Size	Availability
240	2,834 SF	Immediately



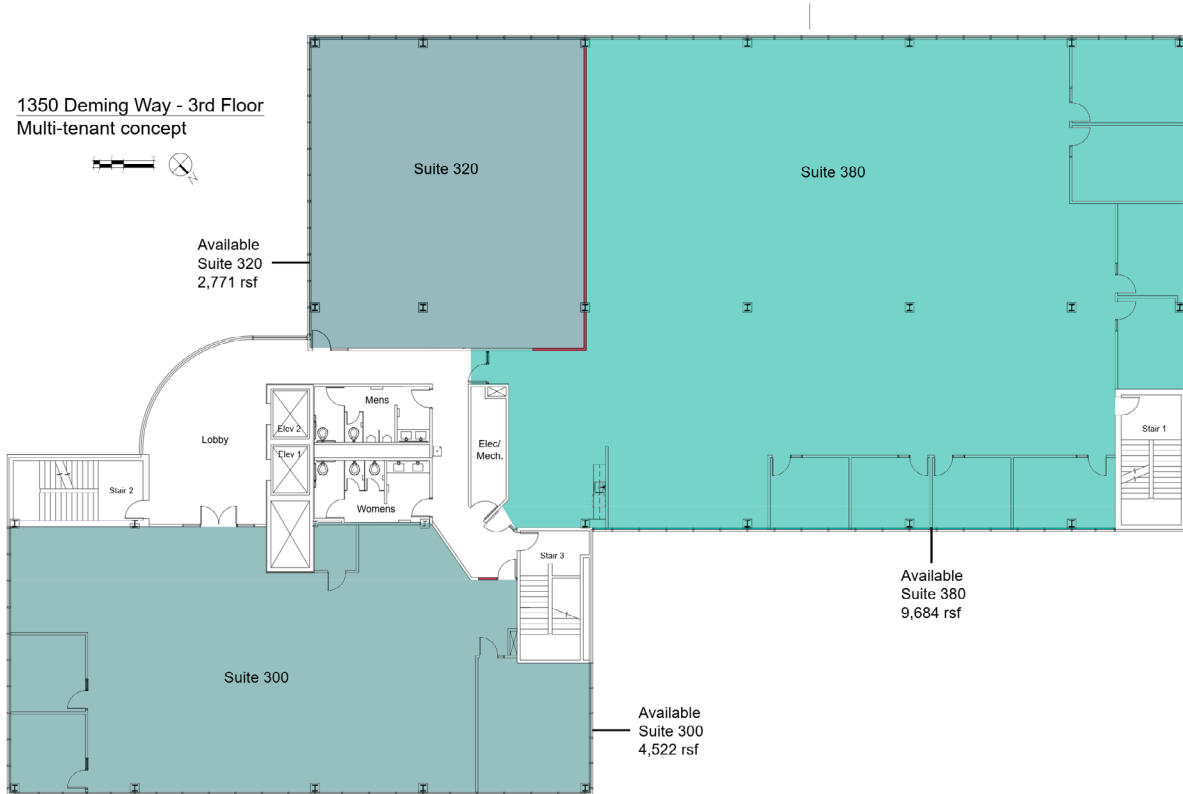
# AVAILABLE SUITES

Unit #	Size	Availability
300	16,909 SF   Divisible	Immediately



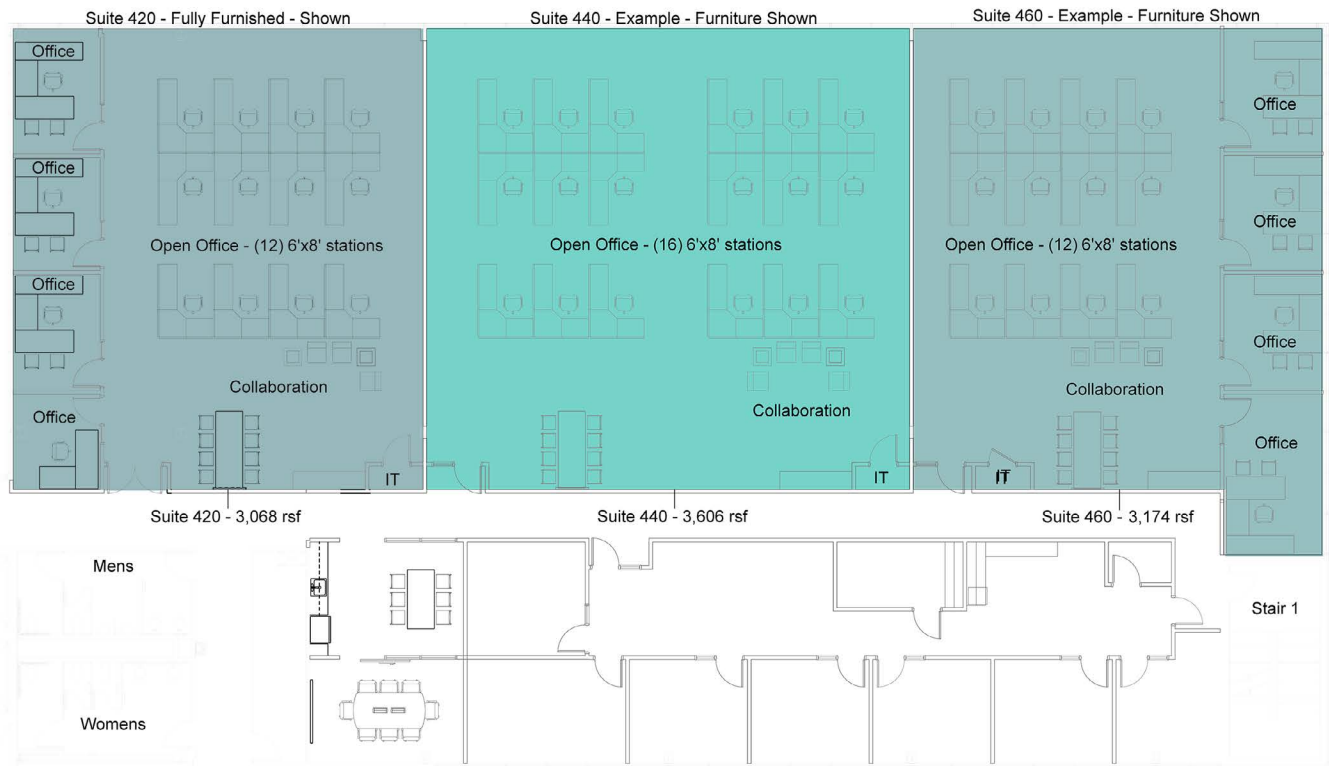
# AVAILABLE SUITES

Unit #	Size	Availability
300	4,522 SF	Immediately
320	2,771 SF	Immediately
380	9,684 SF	Immediately



# AVAILABLE SUITES

Unit #	Size	Availability
420 - Fully Furnished	3,068 SF	Immediately
440 - Spec Suite	3,606 SF	Immediately
460 - Spec Suite	3,174 SF	Immediately



① Suites Plan  
3/12/2020

# SITE MAP



1350 Deming Way

## FIND US HERE

- **Gross Leasable Area:** 70,276 SF
- **Key Tenant(s):** Aecom Technology, Employee Benefits
- **Major Arterials & Access:** Greenway Blvd, W Beltline Highway

### AREA DEMOGRAPHICS\*



206,972  
Population



\$127,557  
Avg. Household Income



252,251  
Daytime Population



66.5%  
Population with  
Bachelor's, Graduate,  
or Professional Degree



192,240  
Employees

\*Within 7 miles of 1350 Deming Way (2023 estimates)

**1350 DEMING WAY  
MADISON, WI**

**FOR OFFICE LEASING INQUIRIES**

**KYLE ROBB, CCIM**

Director - Leasing  
(+1) 608-830-6308  
kyle.robber@rfa.ca

**RFA**

ASSET MANAGEMENT

**MADISON.RFAASSETMANAGEMENT.CA**

2026 RFA. ALL RIGHTS RESERVED. THE INFORMATION CONTAINED IN THIS COMMUNICATION IS STRICTLY CONFIDENTIAL. THIS INFORMATION HAS BEEN OBTAINED FROM SOURCES BELIEVED TO BE RELIABLE BUT HAS NOT BEEN VERIFIED. NO WARRANTY OR REPRESENTATION, EXPRESS OR IMPLIED, IS MADE AS TO THE CONDITION OF THE PROPERTY (OR PROPERTIES) REFERENCED HEREIN OR AS TO THE ACCURACY OR COMPLETENESS OF THE INFORMATION CONTAINED HEREIN, AND SAME IS SUBMITTED SUBJECT TO ERRORS, OMISSIONS, CHANGE OF PRICE, RENTAL OR OTHER CONDITIONS, WITHDRAWAL WITHOUT NOTICE, AND TO ANY SPECIAL LISTING CONDITIONS IMPOSED BY THE PROPERTY OWNER(S). ANY PROJECTIONS, OPINIONS OR ESTIMATES ARE SUBJECT TO UNCERTAINTY AND DO NOT SIGNIFY CURRENT OR FUTURE PROPERTY PERFORMANCE.