

# Office Space For Lease

Tommaso Building Suite 224  
951 Kimball Ln.  
Verona, WI 53593



**Contact:**  
Tom Frydenlund - 608-575-9700 | [tom@wimetrorealestate.com](mailto:tom@wimetrorealestate.com)  
Vincent Weis - 608-695-6105 | [vincent.weis@southernitalyimports.com](mailto:vincent.weis@southernitalyimports.com)

# 525 Sq. Ft.

# Office Space For Lease

Tommaso Building Suite 224  
951 Kimball Ln.  
Verona, WI 53593

## Property Overview:

- Space Size: **525 Sq. Ft.**
- Other building tenants include: Edward Jones, Nei Turner Media, Diversified Financial Consultants, E4 Insurance, Wealth Strategies, and more
- Private balcony
- Heated underground parking included
- Minutes from downtown Verona and a wide variety of restaurants and retail.
- 5 minute drive from Epic Systems
- 1 min from Glacier Edge Elementary School

## TERMS:

**Lease Rate: \$22.00 per Sq. Ft.**

**Minimum Lease Term: 3 Years**

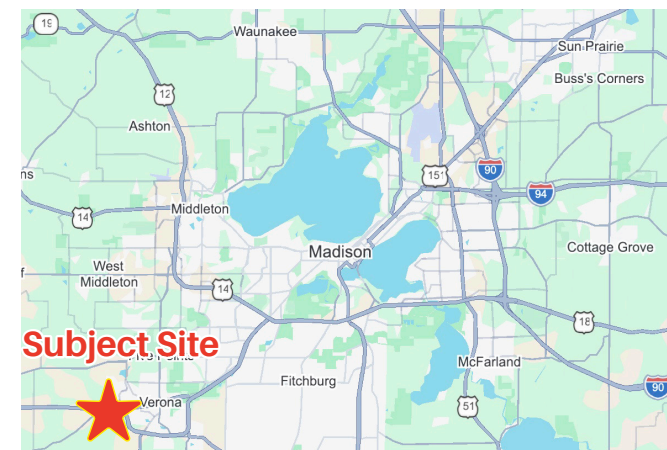
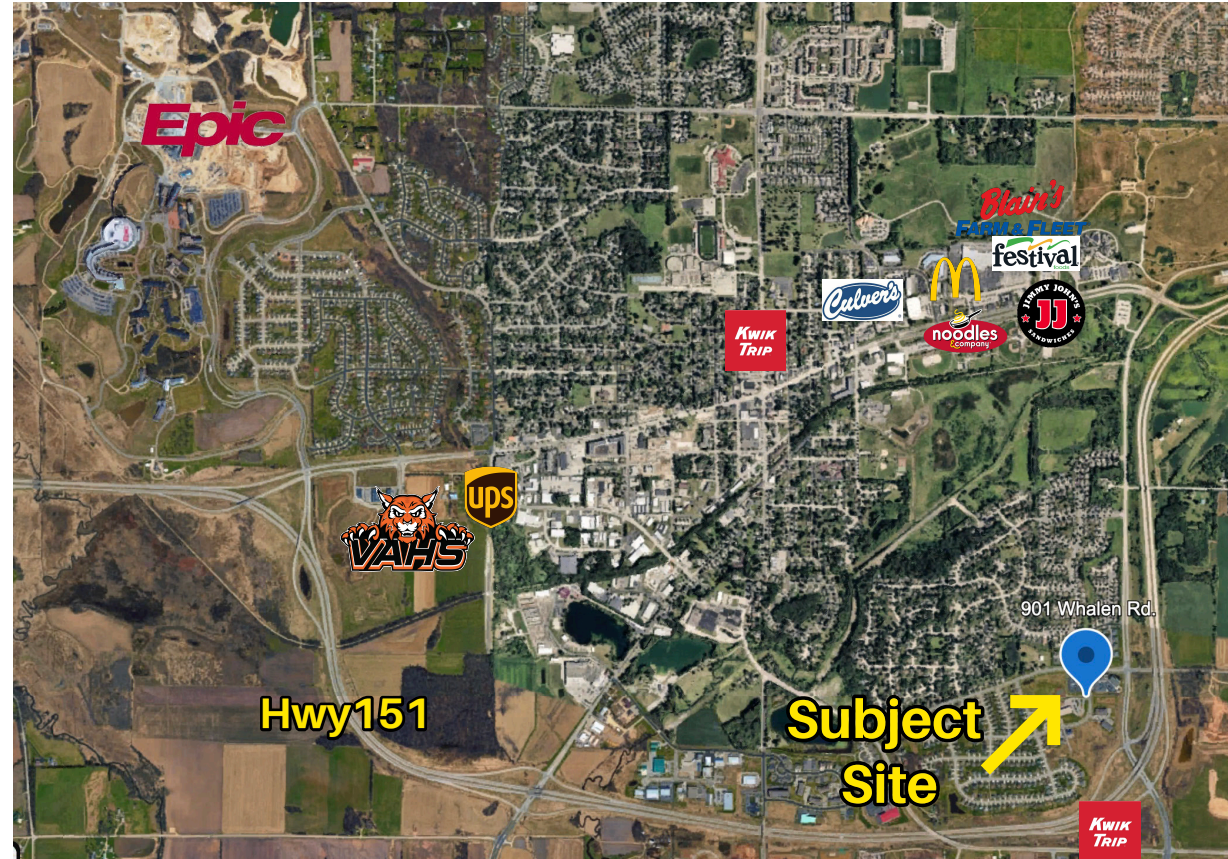
**Delivery Condition of Premises: AS IS (no Landlord work included in Lease Rate above)**

**Included in Lease Rate: CAM, property taxes, utilities, snow removal, landscape and parking lot maintenance**

## **Contact:**

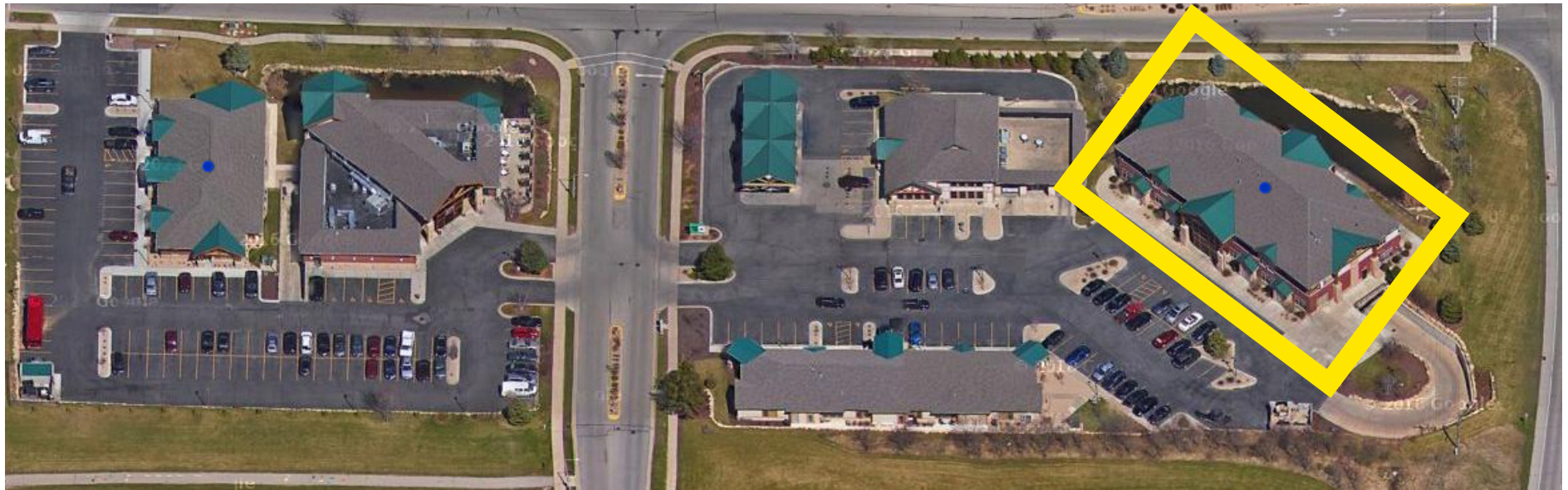
Tom Frydenlund - 608-575-9700 | tom@wimetrorealestate.com

Vincent Weis - 608-695-6105 | vincent.weis@southernitalyimports.com



# Office Space For Lease

Tommaso Building Suite 224  
951 Kimball Ln.  
Verona, WI 53593



## Contact:

Tom Frydenlund - 608-575-9700 | [tom@wimetrorealestate.com](mailto:tom@wimetrorealestate.com)  
Vincent Weis - 608-695-6105 | [vincent.weis@southernitalyimports.com](mailto:vincent.weis@southernitalyimports.com)

# 525 Sq. Ft.