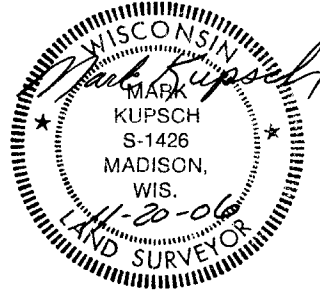


000537

CERTIFIED SURVEY MAP

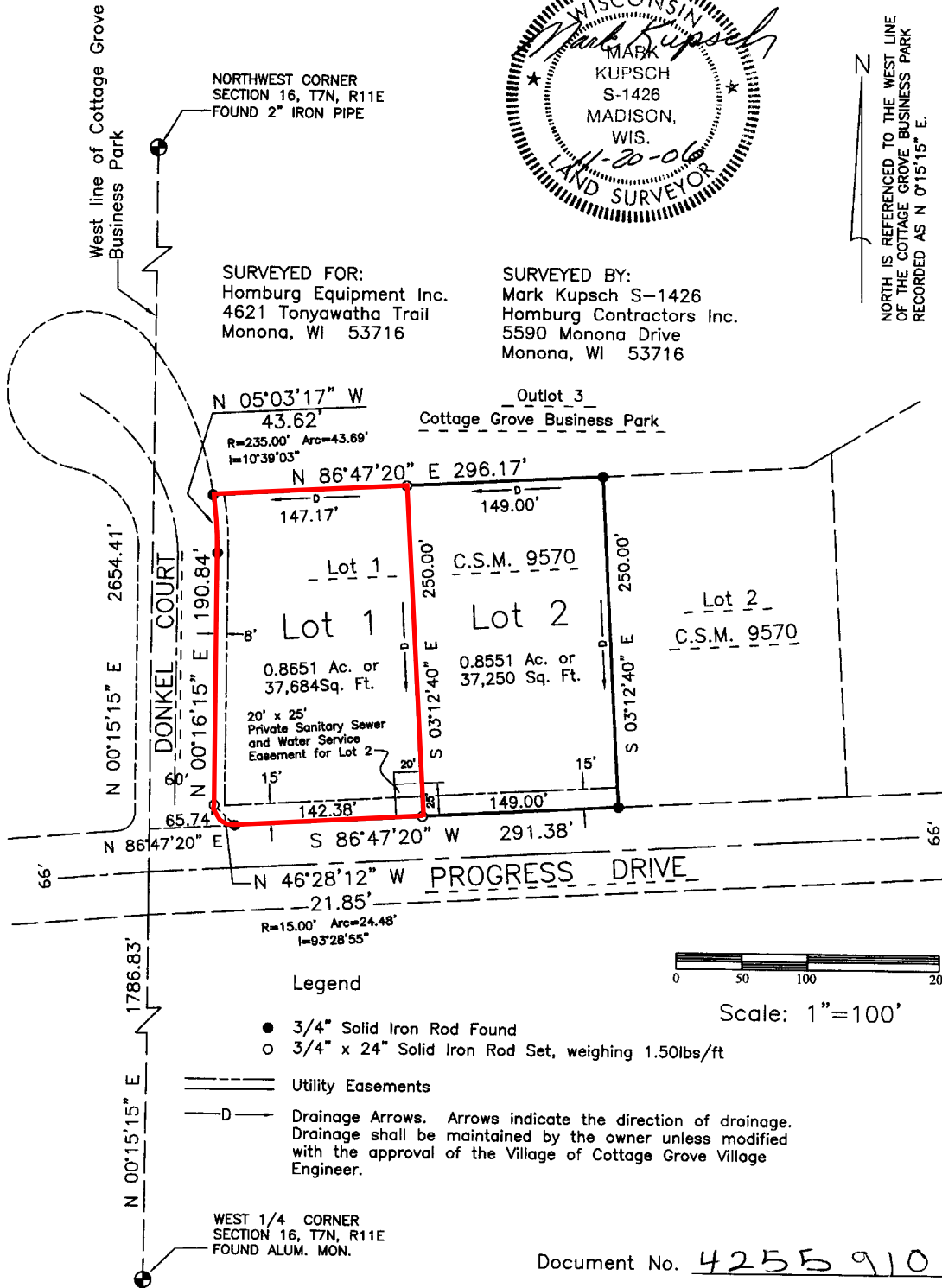
Lot 1, Certified Survey Map Number 9570, recorded in Volume 55 of Certified Surveys, Pages 24-26, as Document Number 3183986, Dane County Registry, located in the Northwest 1/4, of the Northwest 1/4, of Section 16, T7N, R11E, Village of Cottage Grove, Dane County, Wisconsin.



NORTH IS REFERENCED TO THE WEST LINE OF THE COTTAGE GROVE BUSINESS PARK RECORDED AS N 0°15'15" E.

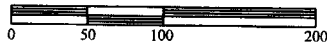
SURVEYED FOR:
Homburg Equipment Inc.
4621 Tonyawatha Trail
Monona, WI 53716

SURVEYED BY:
Mark Kupsch S-1426
Homburg Contractors Inc.
5590 Monona Drive
Monona, WI 53716



Legend

- 3/4" Solid Iron Rod Found
- 3/4" x 24" Solid Iron Rod Set, weighing 1.50lbs/ft
- ==== Utility Easements
- D— Drainage Arrows. Arrows indicate the direction of drainage. Drainage shall be maintained by the owner unless modified with the approval of the Village of Cottage Grove Village Engineer.



Scale: 1"=100'

Document No. 4255910

Map No. 11991

Volume 73 Page 347

3/15