





1212 Deming Way is located in the Old Sauk Trails Business Park, this bright and spacious three story building offers approximately 86,430 square feet of Class A office space. Just minutes from the West Beltline Highway, the property provides excellent access to both Madison and Middleton, along with a variety of nearby amenities including restaurants, retail, hotels, fitness centers, and professional services within the surrounding business park. On site features such as modern common areas, well maintained interiors, ample surface parking, and professional property management contribute to a convenient and welcoming workplace environment for today's businesses.

SPACE & PROPERTY HIGHLIGHTS

Building Size	86,435 SF
Available Space	First Floor • 27,774 SF Second Floor • 30,315 SF Third Floor • 28,346 SF
Floors	3
Building Hours	7:00 a.m. - 5:00 p.m. M-F
Building Updates	Completely remodeled with new furniture in 2017
Signage	Monument & building signage available
Parking	4.01/1000 371 Stalls
HVAC System	Rooftop cool/boiler heat
Telephone/Cable Internet Providers	TDS Metrocom/TDS Telecom/Charter



OFF-SITE SELF-SERVE COFFEE LOUNGE



ON-SITE FITNESS CENTERS



OFF-SITE RESERVABLE GOLF LOUNGE



AMENITIES

ON-SITE:

- Two-Story Open Lobby
- Two Outdoor Patios
- Workout Facilities
- Mother's Room
- Ample Surface Parking and Loading Dock
- Back-Up Generator

SHARED/OFF-SITE:

- Full Service Cafe
- Multiple No-Fee Workout Facilities
- Golf Simulator Lounges
- Self-Serve Coffee Lounges
- Conference Centers and Board Rooms

FOR MORE INFORMATION:

<https://madison.rfaassetmanagement.ca>

AVAILABLE SUITES

Unit #

Size

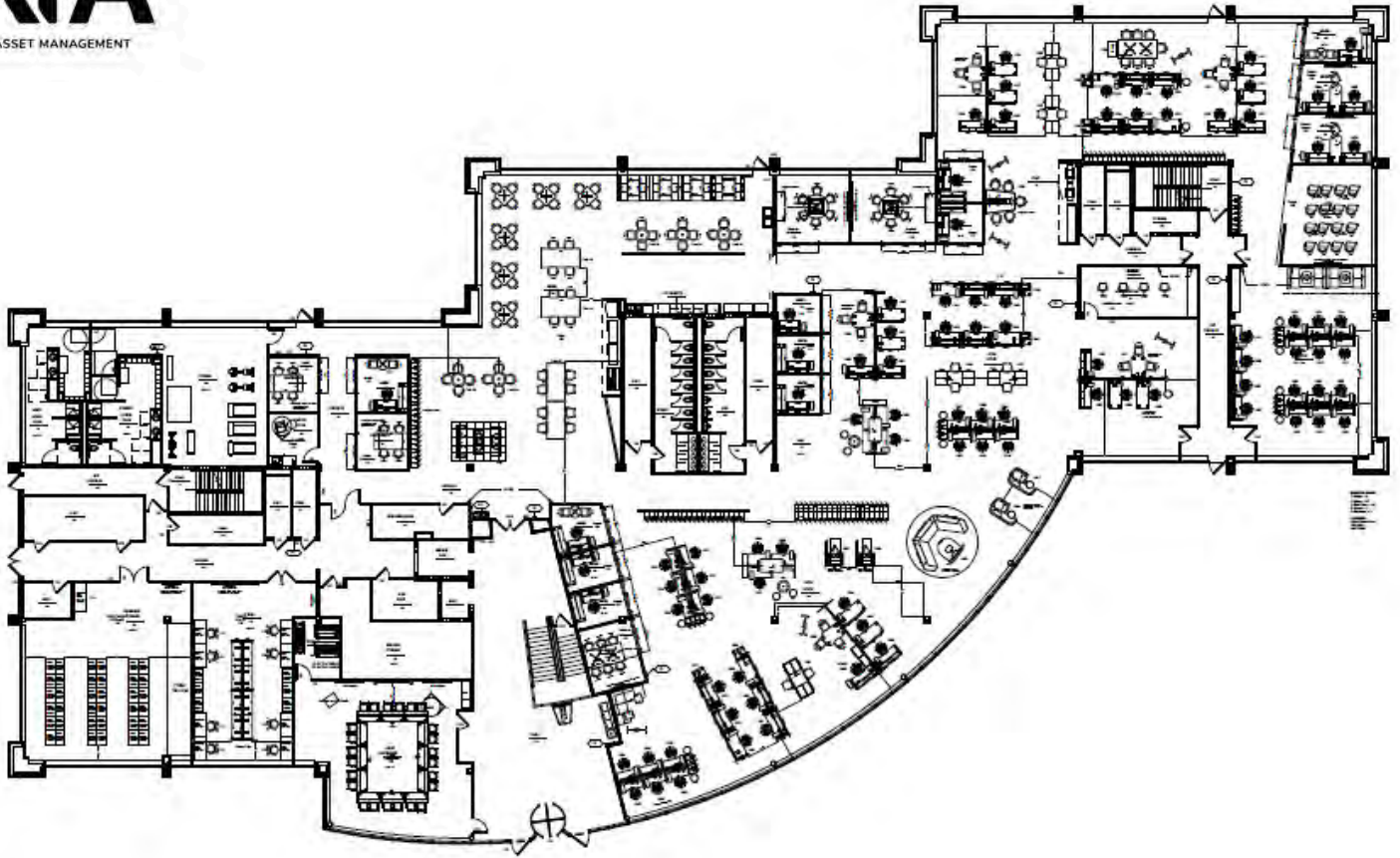
Available Immediately

First Floor

27,774 rsf

Fully Furnished

RFA
ASSET MANAGEMENT



RFA
ASSET MANAGEMENT

1212 DEMING WAY, MADISON, WI

AVAILABLE SUITES

Unit #

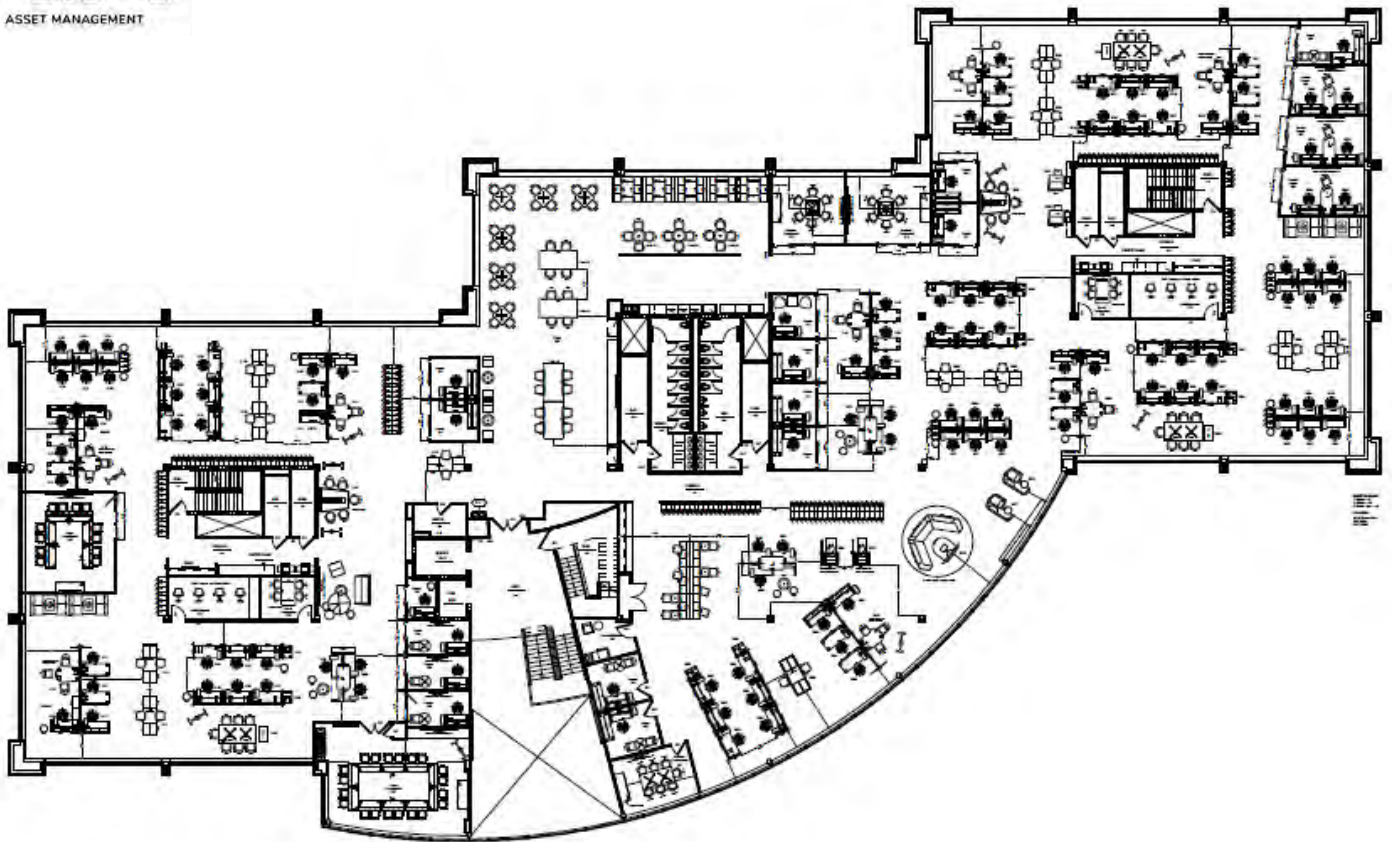
Size

Second Floor

30,315 rsf

Fully Furnished

RFA
ASSET MANAGEMENT



RFA
ASSET MANAGEMENT

1212 DEMING WAY, MADISON, WI

AVAILABLE SUITES

Unit #

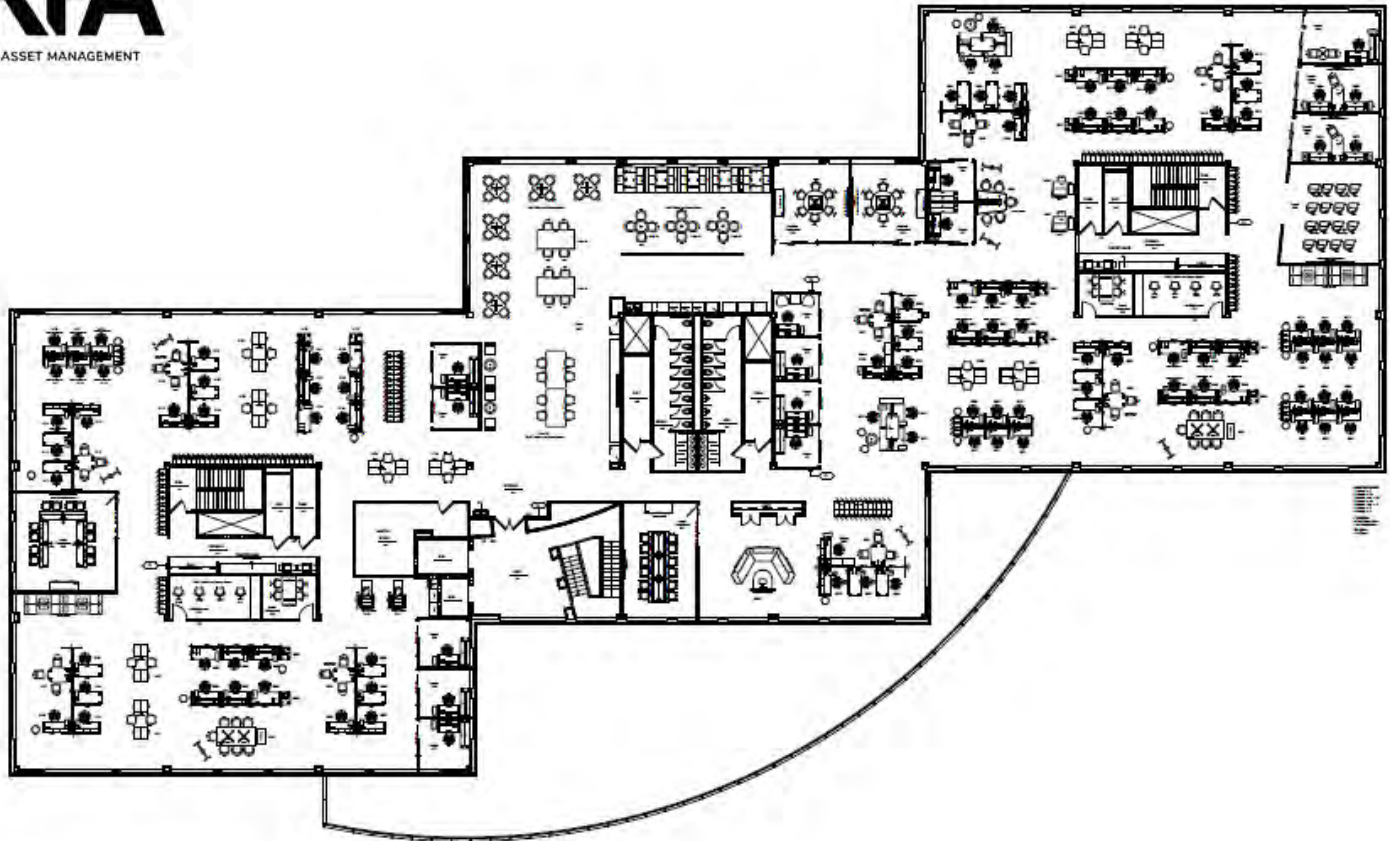
Size

Third Floor

28,346 rsf

Fully Furnished

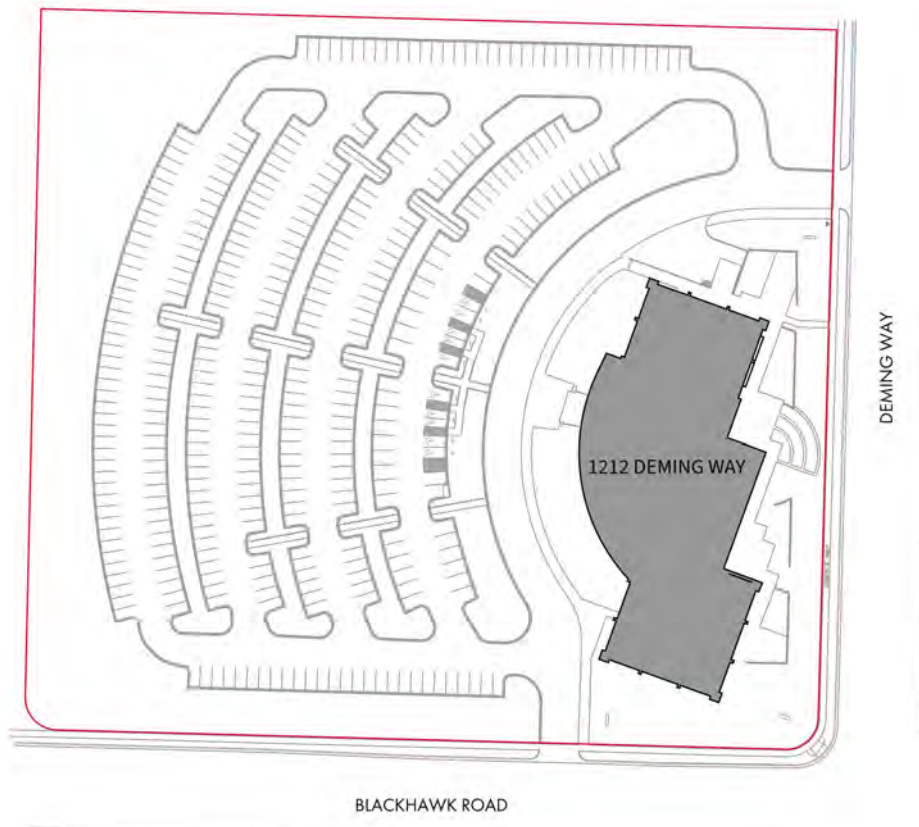
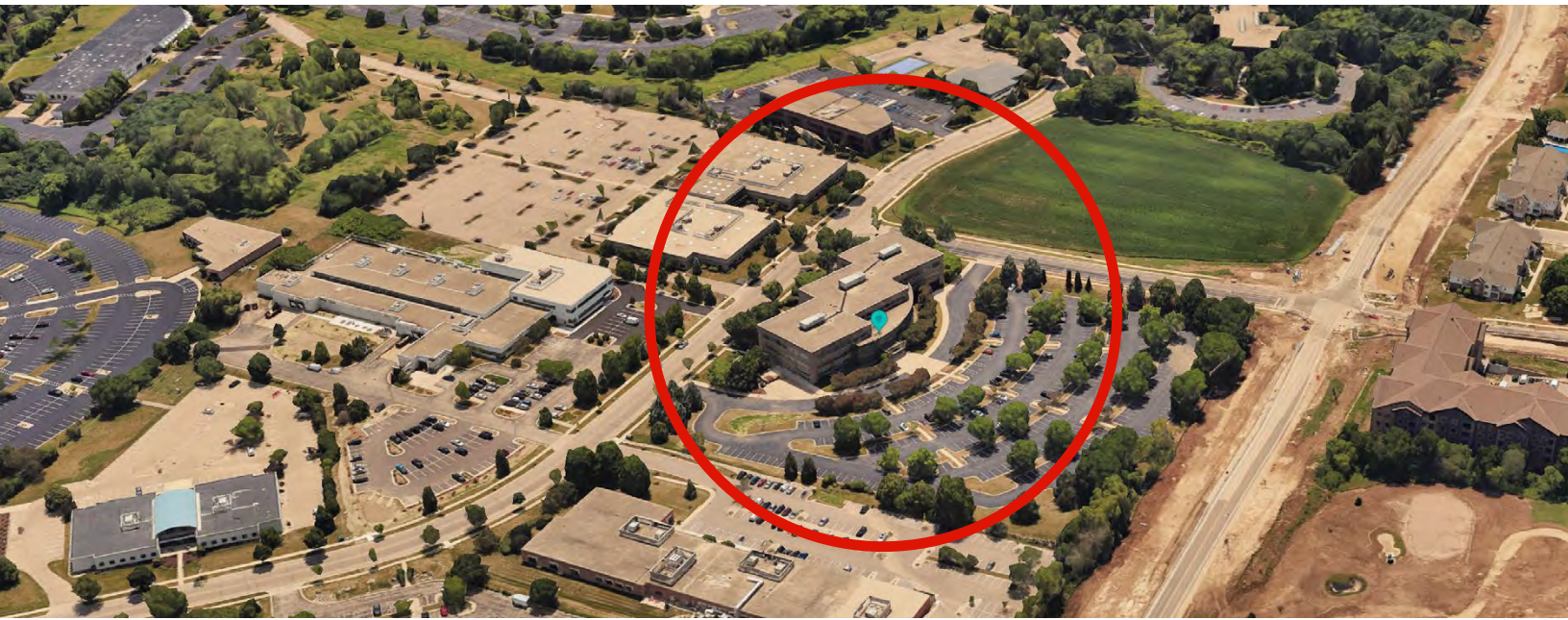
RFA
ASSET MANAGEMENT



RFA
ASSET MANAGEMENT

1212 DEMING WAY, MADISON, WI

SITE MAP



FIND US HERE
1212 Deming Way

AREA DEMOGRAPHICS*



206,972
Population



\$127,557
Avg. Household Income



252,251
Daytime Population



66.5%
Population with
Bachelor's, Graduate,
or Professional Degree



192,240
Employees

- **Gross Leasable Area:** 86,435 SF
- **Location Highlights:** Old Sauk Trails Park, dedicated green space with jogging/walking trails
- **Major Arterials & Access:** W Beltline Hiwy, Old Sauk Rd, large parking lot for ease of deliveries

*Within 7 miles of 1212 Deming Way (2023 estimates)

1212 DEMING WAY, MADISON, WI

FOR OFFICE LEASING INQUIRIES

KYLE ROBB, CCIM
Director - Leasing
(+1) 608-830-6308
kyle.robbs@rfa.ca

RFA

ASSET MANAGEMENT

MADISON.RFAASSETMANAGEMENT.CA

2026 RFA. ALL RIGHTS RESERVED. THE INFORMATION CONTAINED IN THIS COMMUNICATION IS STRICTLY CONFIDENTIAL. THIS INFORMATION HAS BEEN OBTAINED FROM SOURCES BELIEVED TO BE RELIABLE BUT HAS NOT BEEN VERIFIED. NO WARRANTY OR REPRESENTATION, EXPRESS OR IMPLIED, IS MADE AS TO THE CONDITION OF THE PROPERTY (OR PROPERTIES) REFERENCED HEREIN OR AS TO THE ACCURACY OR COMPLETENESS OF THE INFORMATION CONTAINED HEREIN, AND SAME IS SUBMITTED SUBJECT TO ERRORS, OMISSIONS, CHANGE OF PRICE, RENTAL OR OTHER CONDITIONS, WITHDRAWAL WITHOUT NOTICE, AND TO ANY SPECIAL LISTING CONDITIONS IMPOSED BY THE PROPERTY OWNER(S). ANY PROJECTIONS, OPINIONS OR ESTIMATES ARE SUBJECT TO UNCERTAINTY AND DO NOT SIGNIFY CURRENT OR FUTURE PROPERTY PERFORMANCE.