



146 S Main, Lodi, US 53555

**\$215,000**

146 S Main

Retail | 1,495 SqFt



Spencer Schumacher  
58017-90  
608.841.2221

Listing Added: Today  
Listing Updated: Today



**Details**

Asking Price	<b>\$215,000</b>	Property Type	<b>Retail, Office</b>
Sub Type	<b>Traditional Office, Salon/Barbershop, Other</b>	Tenancy	<b>Vacant</b>
Square Footage	<b>1,495</b>	Units	<b>1</b>
Year Built	<b>1881</b>	Zoning	<b>Commercial</b>
Lot Size (acres)	<b>0.06</b>	Parking (spaces)	<b>3</b>
APN	<b>11246 231.04</b>	Ground Lease	<b>No</b>

**Marketing Description**

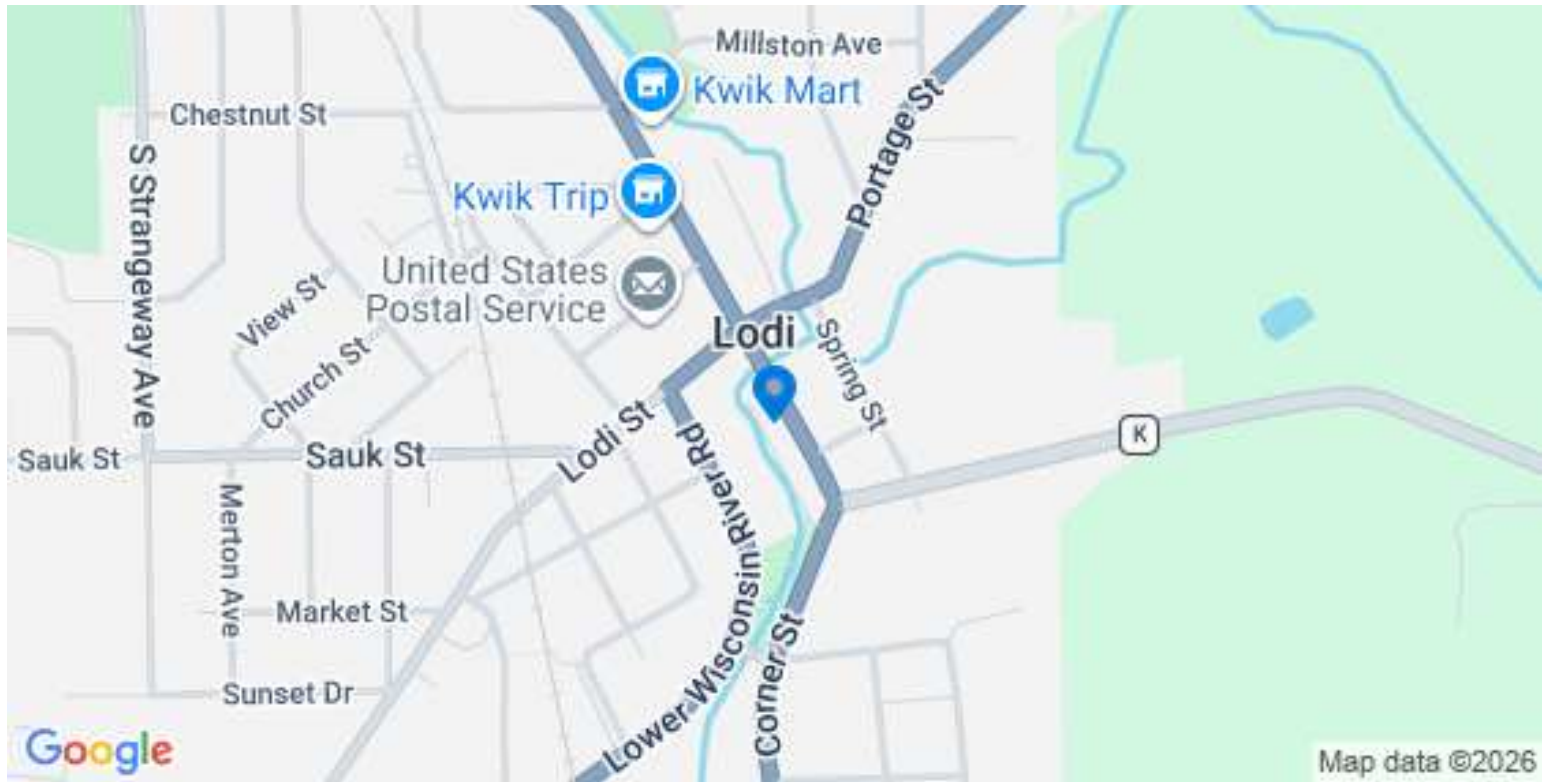
Located in the heart of downtown Lodi, this historic & character-rich building offers a rare opportunity to own a versatile space in a growing community. Built in 1881, the structure blends timeless architectural charm with modern updates, making it ideal for a variety of business uses including retail, office, or service-based. Near the intersection of Hwy 60 & 113, the property benefits from visibility, steady traffic, & convenient access to surrounding areas including Madison. Building features approximately 1,500+ square feet with high ceilings, large display windows, flexible layout that can be tailored to fit your vision. Additional highlights include municipal utilities, forced air heating & central air, & a full basement with exterior access—offering valuable storage. Onsite & nearby public parking provide convenience for customers and employees alike. Don't miss out on this great opportunity!

**Investment Highlights**

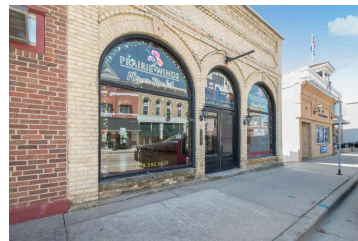
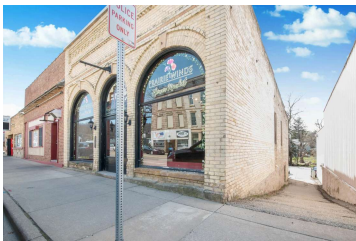
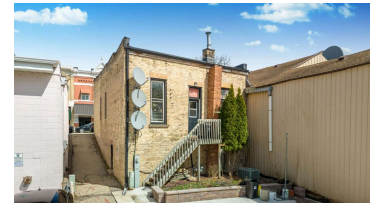
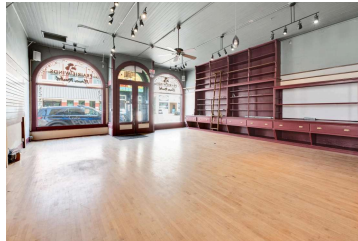
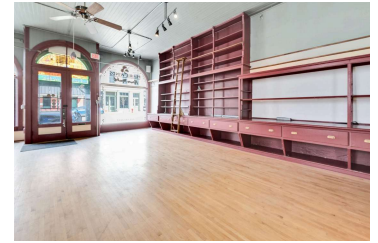
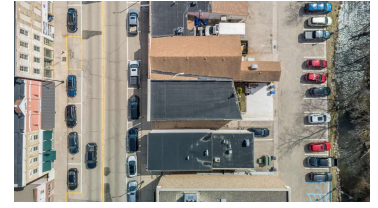
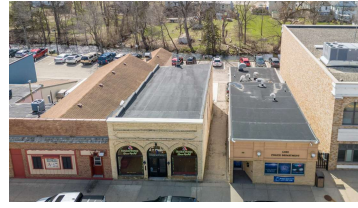
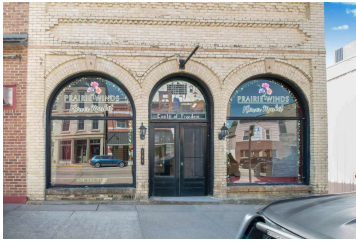
[Check out the 3D Model! \(https://my.matterport.com/show/?m=o5ZRE53Wwx5\)](https://my.matterport.com/show/?m=o5ZRE53Wwx5)



Location (1 Location)



Property Photos (19 photos)



Demographic Insights

