

INDUSTRIAL | For Lease

3002-3014 MEIER RD, MADISON, WI



Industrial | Flex | Office



KOTHE REAL ESTATE PARTNERS

TERI BELL, CCIM

PARTNER

608.354.2808

TERI@KOTHEREP.COM

INDUSTRIAL | For Lease

3002-3014 MEIER RD, MADISON, WI



KOTHE
REAL ESTATE PARTNERS



For Lease

Available Space

Up to 16,396 sf
Unit 3008: 10,016 SF
Unit 3014: 5,000 SF
Unit 3028: 1,380 SF

Year Built

1991/1999/2015

Zoning

Industrial Limited

Ceiling Heights

Unit 3008A: 17-20' clear
Unit 3008B: 13'9" clear
Unit 3014: 17-20' clear
Unit 3028: 12' clear

Modified Gross Rent

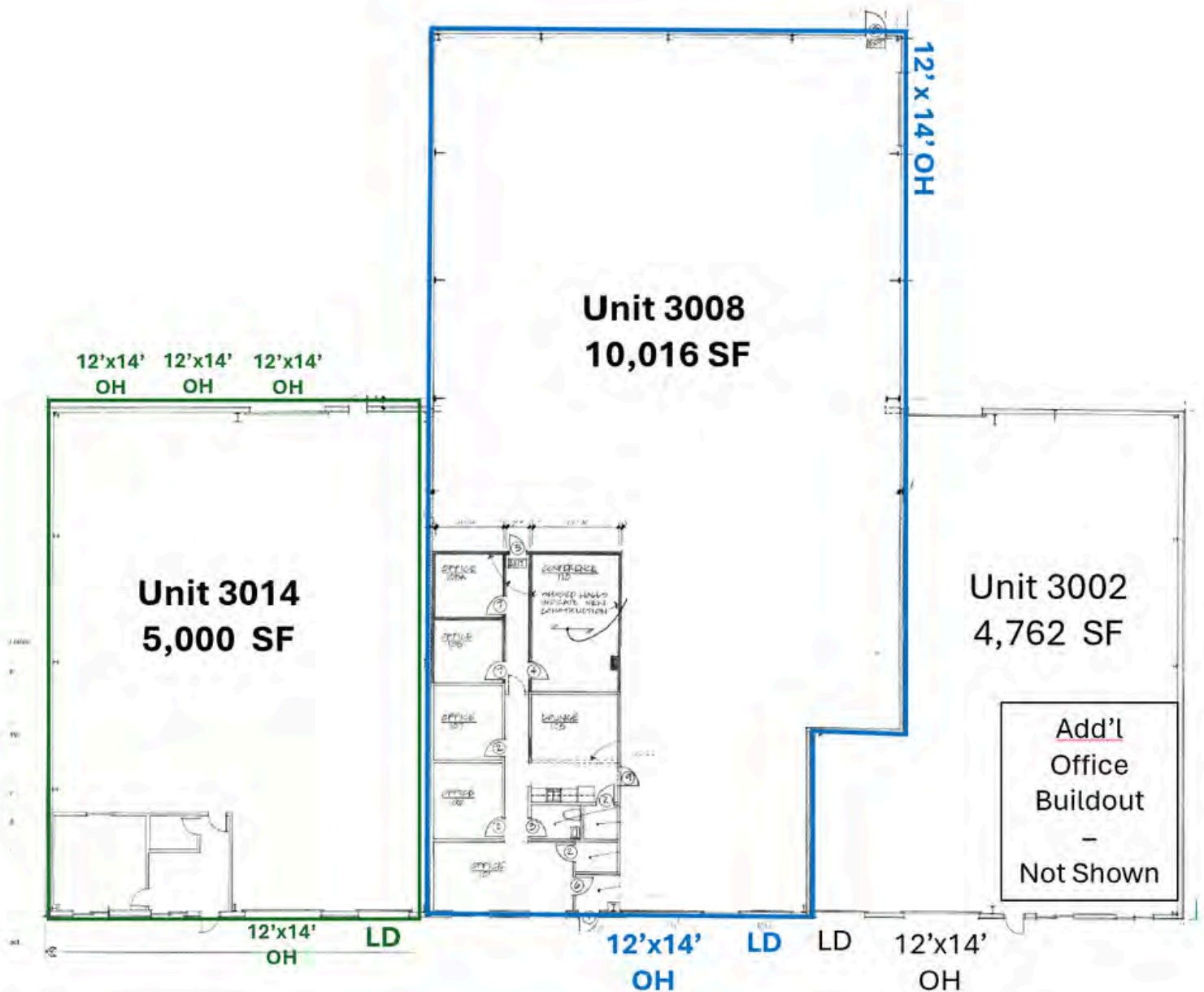
\$13.00 SF Modified Gross
Tenant pays in-suite: gas, electric, maintenance, janitorial

INDUSTRIAL | For Lease

3002-3014 MEIER RD, MADISON, WI



KOTHE
REAL ESTATE PARTNERS



INDUSTRIAL | For Lease

3002-3014 MEIER RD, MADISON, WI

Floor Plan - Unit 3008

Size **10,016 sf**

Clear Height 17'-20' clear
19'-22' to deck
13'9" clear in back portion

Loading Dock One (1) 8'x10'

Overhead Door Two (2) 12'x14'

Office Space Approximately 1,705 SF

- ~31'x55'
- Heated & Cooled
- (5) offices; breakroom; reception
- (1) single stall bathroom

Asking Rent: \$13.00 SF Modified Gross
Tenant pays in-suite: gas, electric, maintenance, janitorial

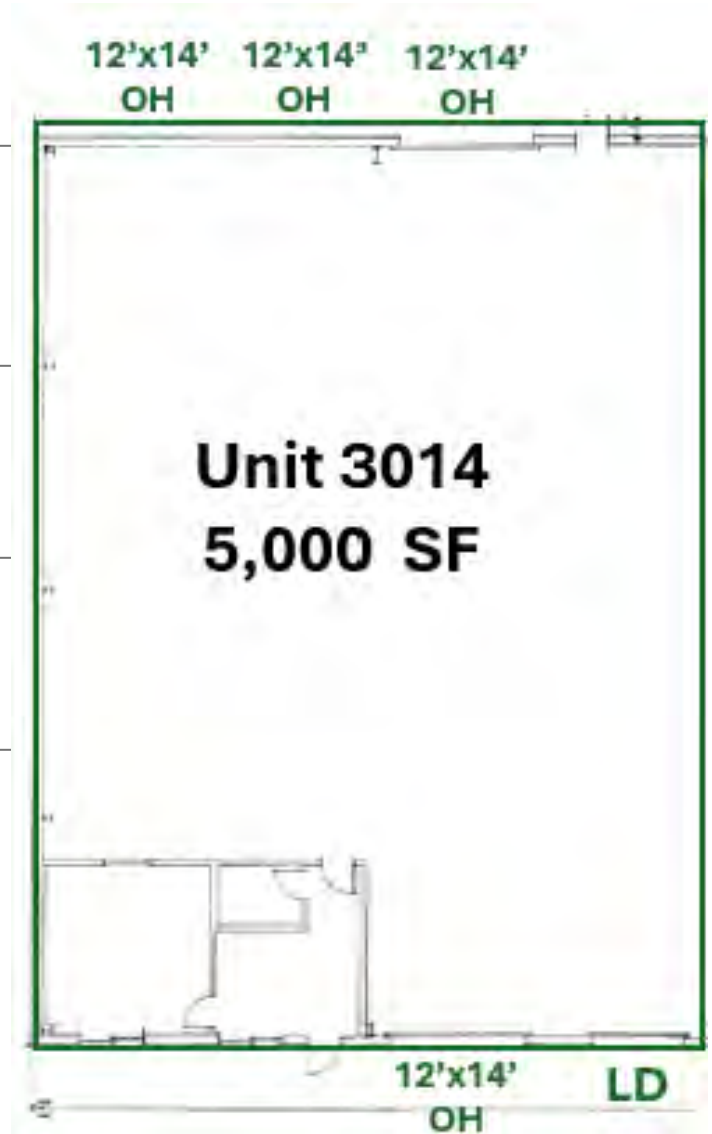


INDUSTRIAL | For Lease

3002-3014 MEIER RD, MADISON, WI

Floor Plan - Unit 3014

Size	5,000 SF
Clear Height	17'-20' clear 19'-22' to deck
Loading Dock	One (1) 8'x10'
Overhead Door	Four (4) 12'x14' Drive through
Office Space	Approximately 460 SF <ul style="list-style-type: none">• Heated & Cooled• (1) office; reception• (1) single stall bathroom



Asking Rent: \$13.00 SF Modified Gross
Tenant pays in-suite: gas, electric, maintenance, janitorial

INDUSTRIAL | For Lease

3002-3014 MEIER RD, MADISON, WI



Floor Plan - Unit 3028



Size 1,380 SF **Overhead Door** One (1) 15'x12'

Clear Height 12' **Warehouse** Cold Storage
Built in 2015

Asking Rent: \$13.00 SF Modified Gross
Tenant pays in-suite: gas, electric, maintenance, janitorial



KOTHE REAL ESTATE PARTNERS
TERI BELL, CCIM
PARTNER
608.354.2808
TERI@KOTHEREP.COM

INDUSTRIAL | For Lease

3002-3014 MEIER ROAD, MADISON, WI

Overview Map



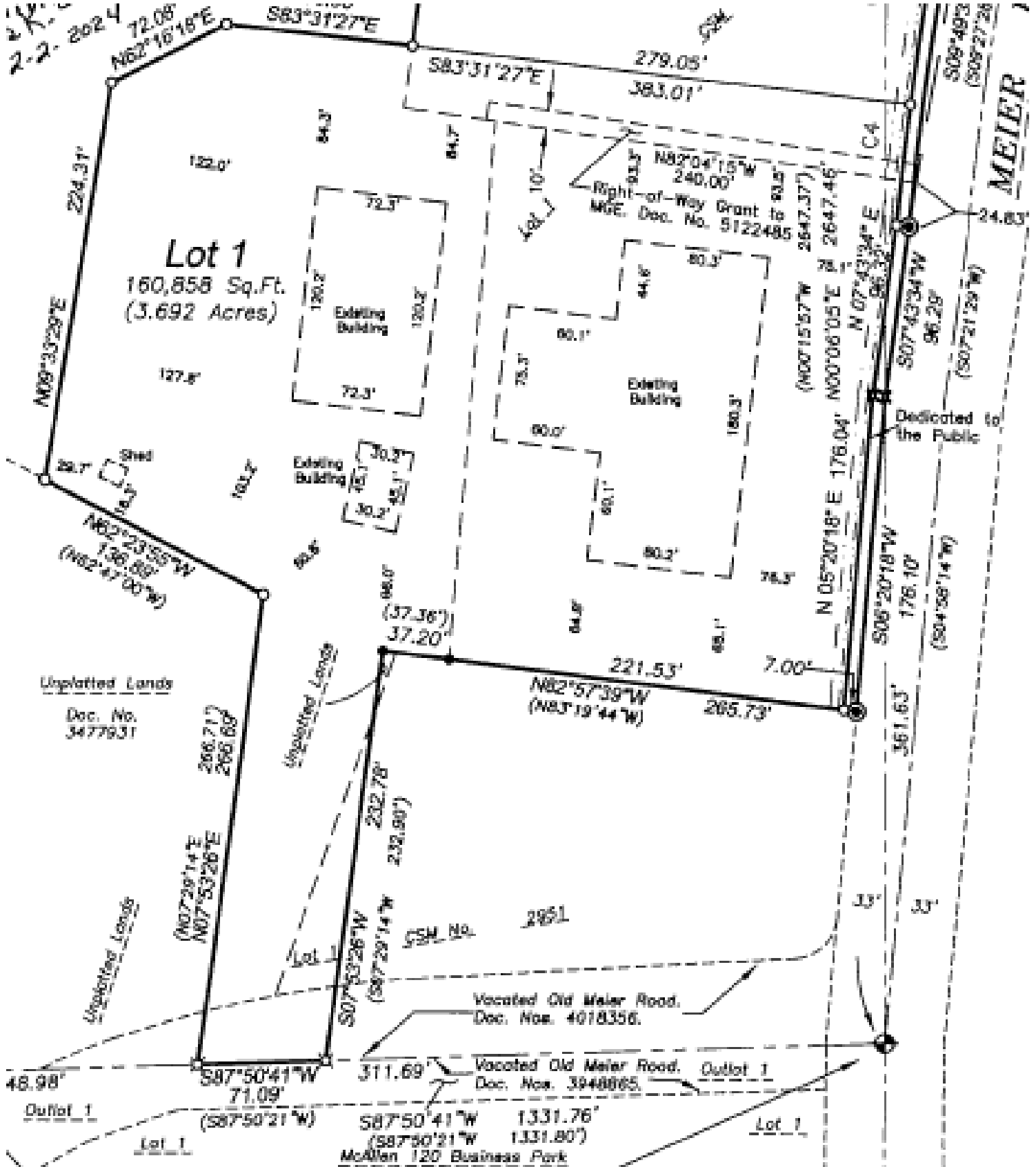
INDUSTRIAL | For Lease

3002-3014 MEIER ROAD, MADISON, WI



KOTHE
REAL ESTATE PARTNERS

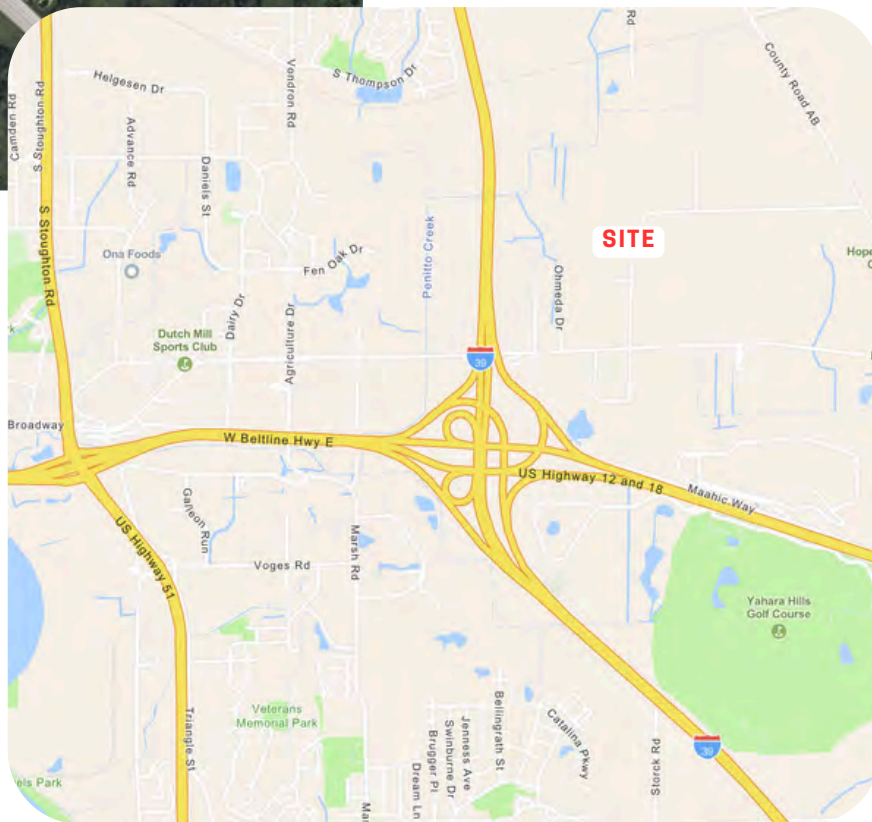
CSM



INDUSTRIAL | For Lease

3002-3014 MEIER ROAD, MADISON, WI

Property Aerial

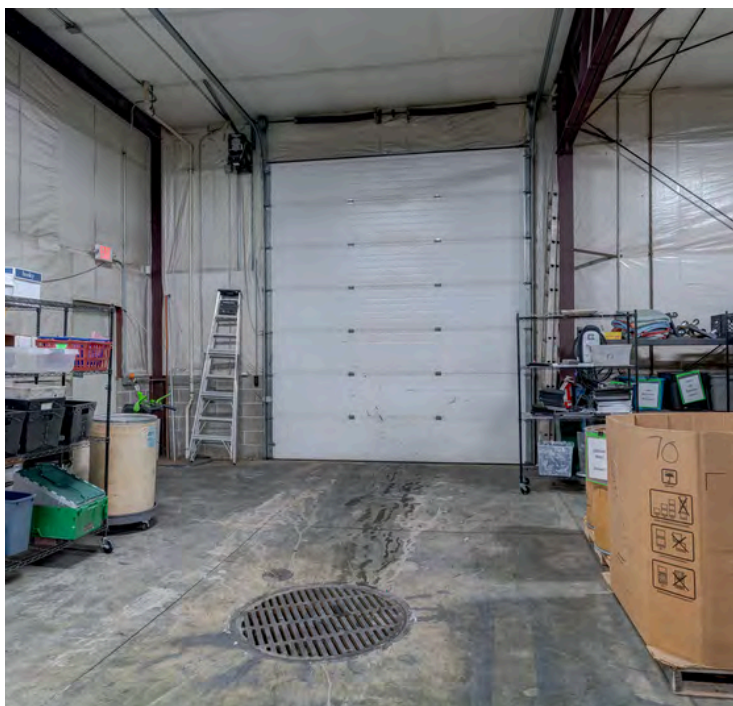
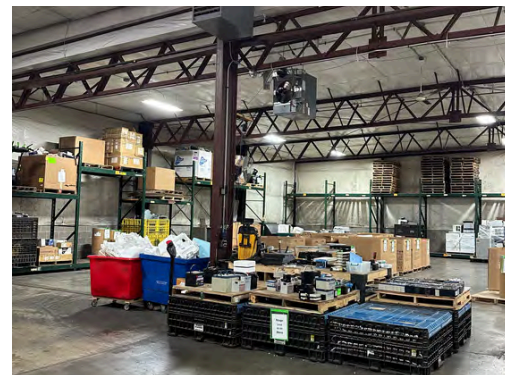


INDUSTRIAL | For Lease

3008 MEIER ROAD, MADISON, WI



KOTHE
REAL ESTATE PARTNERS



KOTHE REAL ESTATE PARTNERS

TERI BELL, CCIM

PARTNER

608.354.2808

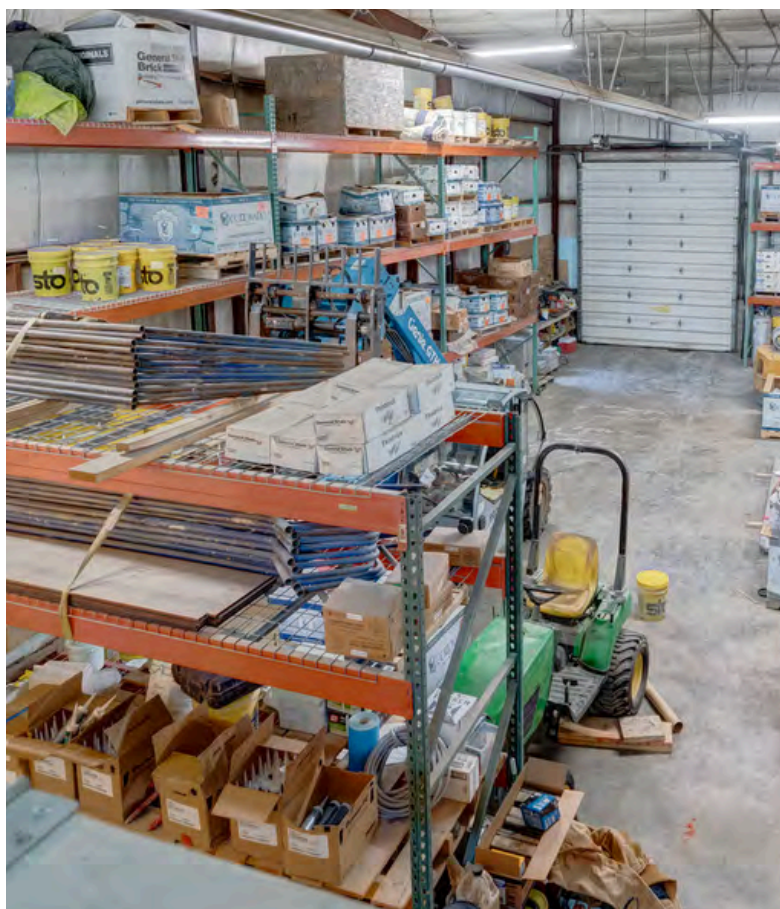
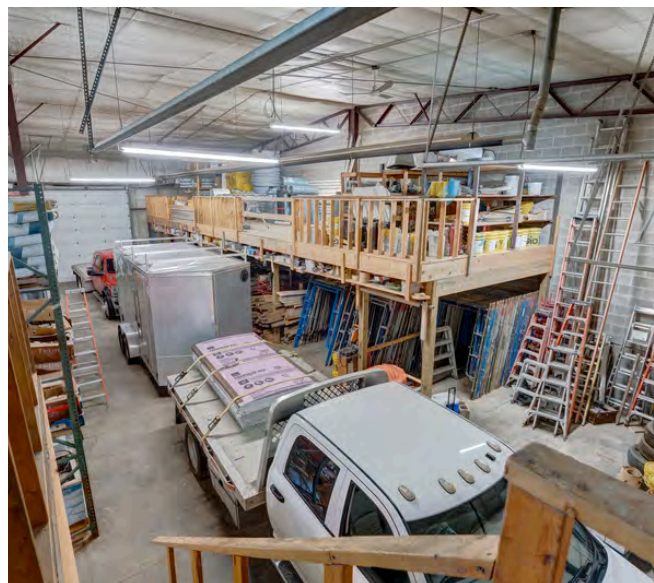
TERI@KOTHEREP.COM

INDUSTRIAL | For Lease

3014 MEIER ROAD, MADISON, WI



KOTHE
REAL ESTATE PARTNERS



KOTHE REAL ESTATE PARTNERS

TERI BELL, CCIM

PARTNER

608.354.2808

TERI@KOTHEREP.COM



KOTHE
REAL ESTATE PARTNERS

INDUSTRIAL | For Lease

3002-3014 MEIER ROAD, MADISON, WI



Prior to negotiating on your behalf the brokerage firm, or an agent associated with the firm, must provide you the following disclosure statement.

BROKER DISCLOSURE TO CUSTOMERS

You are the customer of the brokerage firm (hereinafter Firm). The Firm is either an agent of another party in the transaction or a subagent of another firm that is the agent of another party in the transaction. A broker or a salesperson acting on behalf of the Firm, may provide brokerage services to you. Whenever the Firm is providing brokerage services to you, the Firm and its brokers and salespersons (hereinafter Agents) owe you, the customer, the following duties:

- The duty to provide brokerage services to you fairly and honestly.
- The duty to exercise reasonable skill and care in providing brokerage services to you.
- The duty to provide you with accurate information about market conditions within a reasonable time if you request it, unless disclosure of the information is prohibited by law.
- The duty to disclose to you in writing certain Material Adverse Facts about a property, unless disclosure of the information is prohibited by law (see "Definition of Material Adverse Facts" below).
- The duty to protect your confidentiality. Unless the law requires it, the Firm and its Agents will not disclose your confidential information or the confidential information of other parties (see "Confidentiality Notice To Customers" below).
- The duty to safeguard trust funds and other property held by the Firm or its Agents.
- The duty, when negotiating, to present contract proposals in an objective and unbiased manner and disclose the advantages and disadvantages of the proposals.

Please review this information carefully. An agent of the Firm can answer your questions about brokerage services, but if you need legal advice, tax advice, or a professional property inspection, contact an attorney, tax advisor, or property inspector. This disclosure is required by section 452.135 of the Wisconsin statutes and is for information only. It is a plain-language summary of a broker's duties to a customer under section 452.133 (1) of the Wisconsin statutes.

CONFIDENTIALITY NOTICE TO CUSTOMERS

The Firm and its Agents will keep confidential any information given to the Firm or its Agents in confidence, or any information obtained by the Firm or its Agents that a reasonable person would want to be kept confidential, unless the information must be disclosed by law or you authorize the Firm to disclose particular information. The Firm and its Agents shall continue to keep the information confidential after the Firm is no longer providing brokerage services to you.

The following information is required to be disclosed by law:

1. Material Adverse Facts, as defined in section 452.01 (5g) of the Wisconsin statutes (see "definition of material adverse facts" below).
2. Any facts known by the Firm or its Agents that contradict any information included in a written inspection report on the property or real estate that is the subject of the transaction.

To ensure that the Firm and its Agents is aware of what specific information you consider confidential, you may list that information below or provide that information to the Firm or its Agents by other means. At a later time, you may also provide the Firm or its Agents with other information that you consider to be confidential.

CONFIDENTIAL INFORMATION:

NON-CONFIDENTIAL INFORMATION (The following information may be disclosed by the Firm and its Agents):

(INSERT INFORMATION YOU AUTHORIZE TO BE DISCLOSED SUCH AS FINANCIAL QUALIFICATION INFORMATION)

SEX OFFENDER REGISTRY

Notice: You may obtain information about the sex offender registry and persons registered with the registry by contacting the Wisconsin Department of Corrections on the Internet at <http://www.doc.wi.gov/> or by phone at 608-240-5830.

DEFINITION OF MATERIAL ADVERSE FACTS

A "Material Adverse Fact" is defined in Wis. Stat. 452.01 (5g) as an adverse fact that a party indicates is of such significance, or that is generally recognized by a competent licensee as being of such significance to a reasonable party, that it affects or would affect the party's decision to enter into a contract or agreement concerning a transaction or affects or would affect the party's decision about the terms of such a contract or agreement.

An "Adverse Fact" is defined in Wis. Stat. 452.01 (1e) as a condition or occurrence that a competent licensee generally recognizes will significantly and adversely affect the value of the property, significantly reduce the structural integrity of improvements to real estate, or present a significant health risk to occupants of the property; or information that indicates that a party to a transaction is not able to or does not intend to meet his or her obligations under a contract or agreement made concerning the transaction.

No representation is made as to the legal validity of any provision or the adequacy of any provision on any specific transaction.



Information presented herein is based on estimates and assumptions and is for illustration purposes only. No representation, warranties, or guarantees of any kind are made.