

Industrial for Lease

5821 FEMRITE DRIVE
MADISON, WI 53718

2,500 SF Flex Spaces

\$9.25 P/SF NNN

Available Now



BRYANT MEYER, CCIM
Broker, Associate
(608) 443-1004
bmeyer@oakbrookcorp.com

TONY KEUNTJES
CRE Associate
(608) 443-1039
akeuntjes@oakbrookcorp.com

PROPERTY SUMMARY

5821 Femrite Drive | Madison, WI 53718



Property Summary

Flex Available SF:	2,500 SF
Flex Lease Rate:	\$9.25/SF NNN
Operating Expense:	\$3.27 P/SF
Clear Height:	17' Peak & 14' Eave
Overhead Door:	10' x 10'
Dock Door:	8' x 10'
Power:	3-Phase / 200 Amp
Lighting:	LED
Zoning:	IL

Property Overview

Versatile industrial units featuring 2,500 SF with a 40'x25' air-conditioned office. Warehouse includes 17' peak and 14' eave heights, 10'x10' overhead door, and 8'x10' dock door. 3-phase/200 amp power, LED warehouse lighting, and separately metered gas/electric.

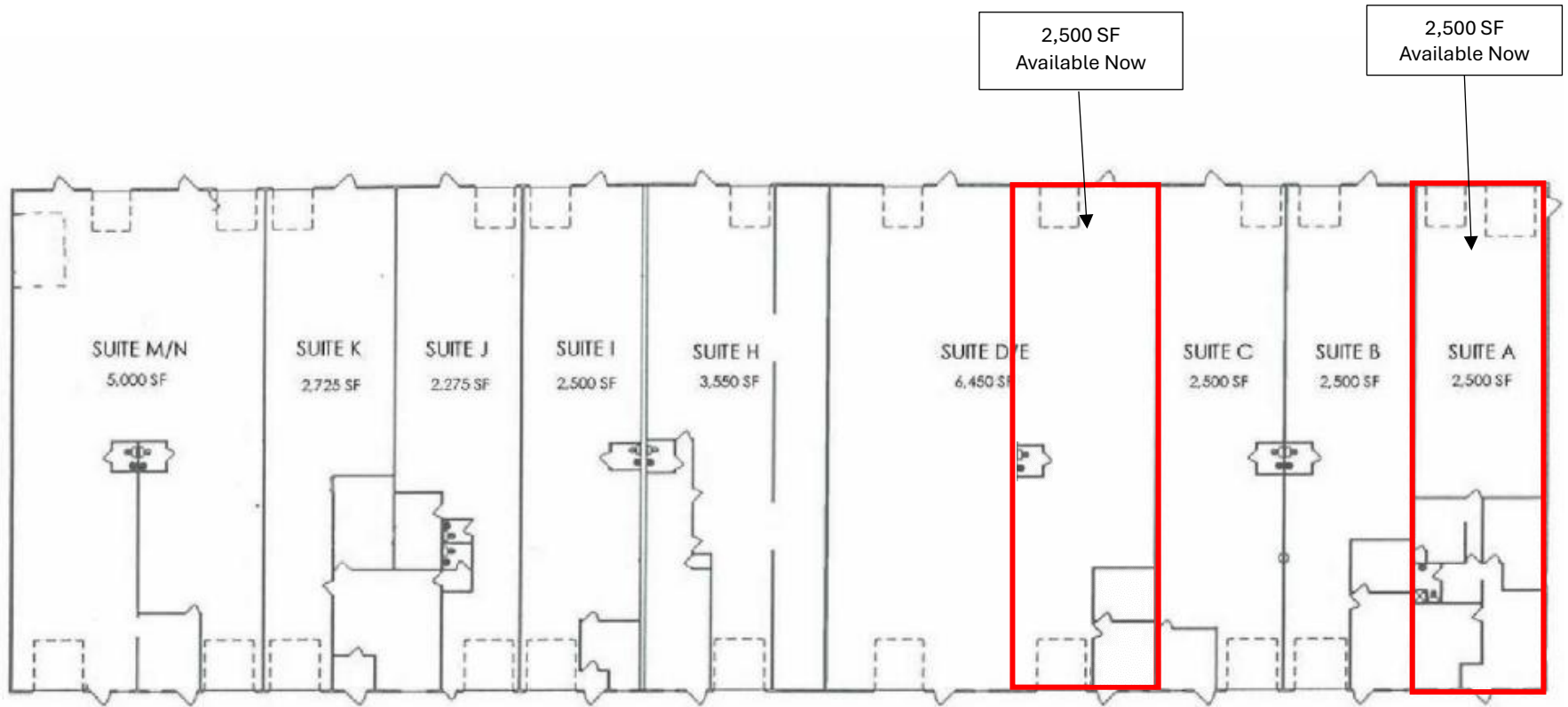
The flex building does not have a sprinkler system. Operating expenses estimated at \$3.27/SF. Tenant is additionally responsible for gas, electric, phone/data, and trash/recycling.

Dock bumpers/seals and parking lot are in the process of being replaced by the Landlord.

FLEX BUILDING FLOOR PLAN

5821 Femrite

5821 Femrite Drive | Madison, WI 53718



PROPERTY PHOTOS

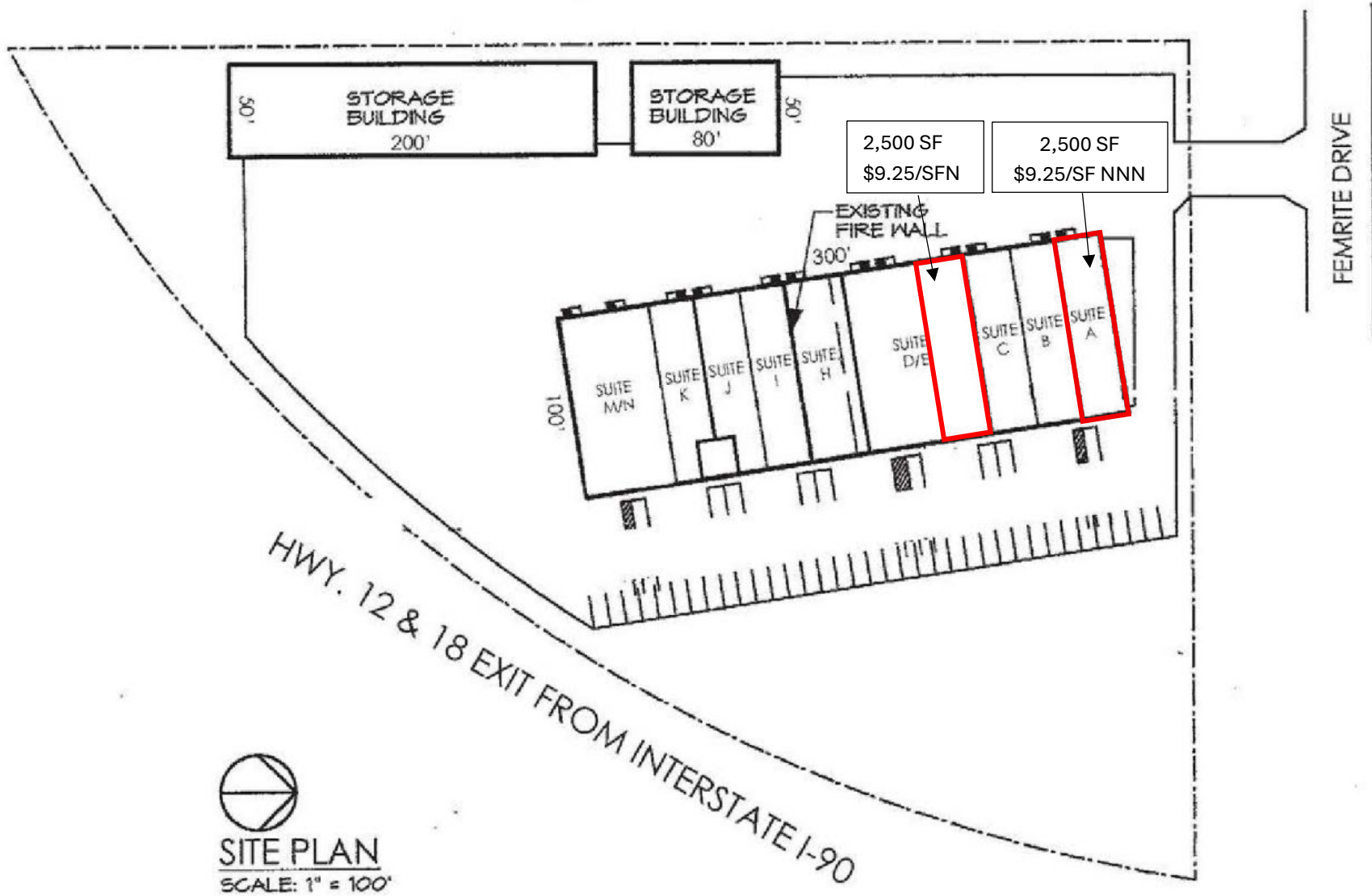
5821 Femrite Drive | Madison, WI 53718



SITE AERIAL PLAN

5821 Femrite

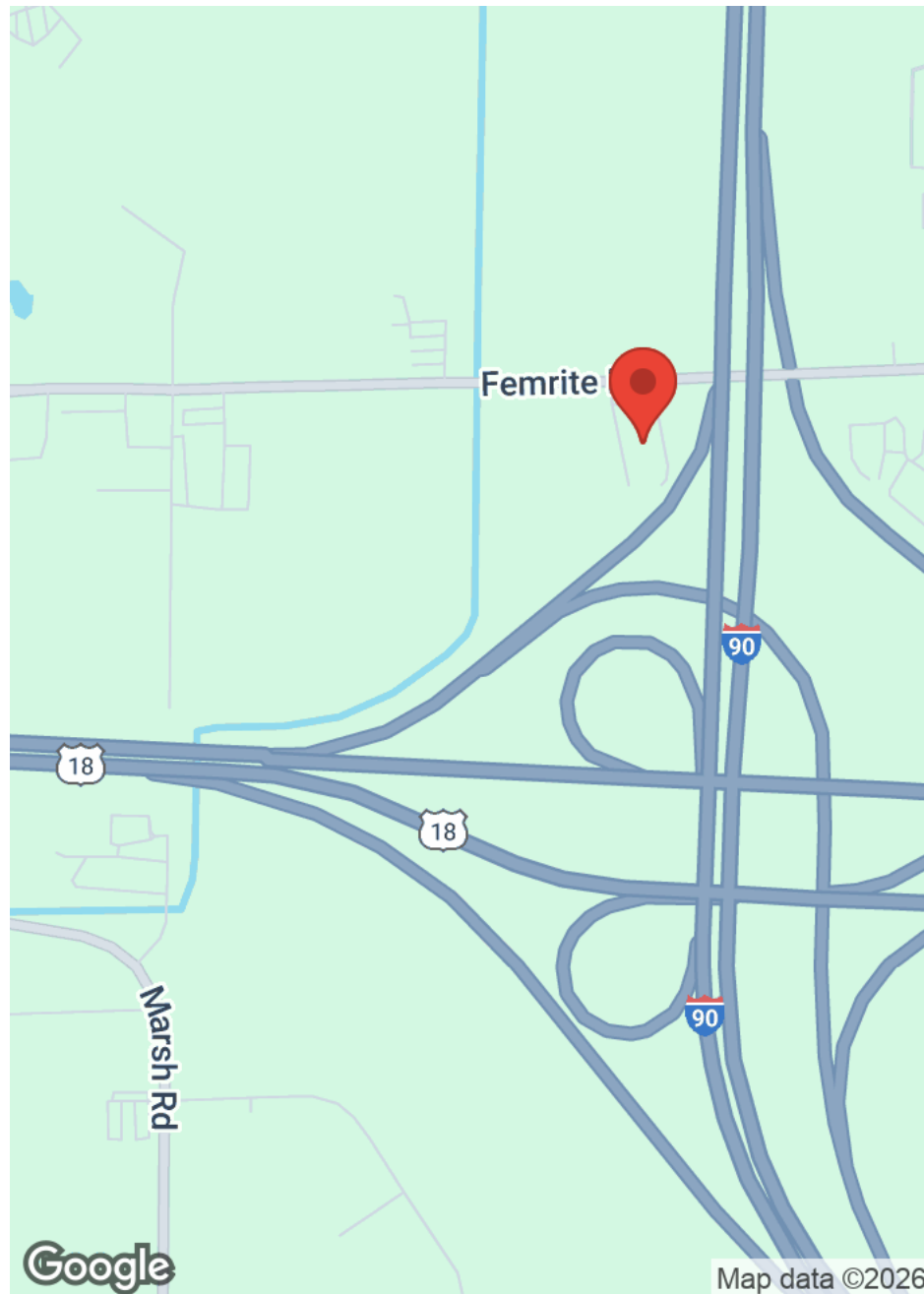
5821 Femrite Drive | Madison, WI 53718




SITE PLAN
SCALE: 1" = 100'

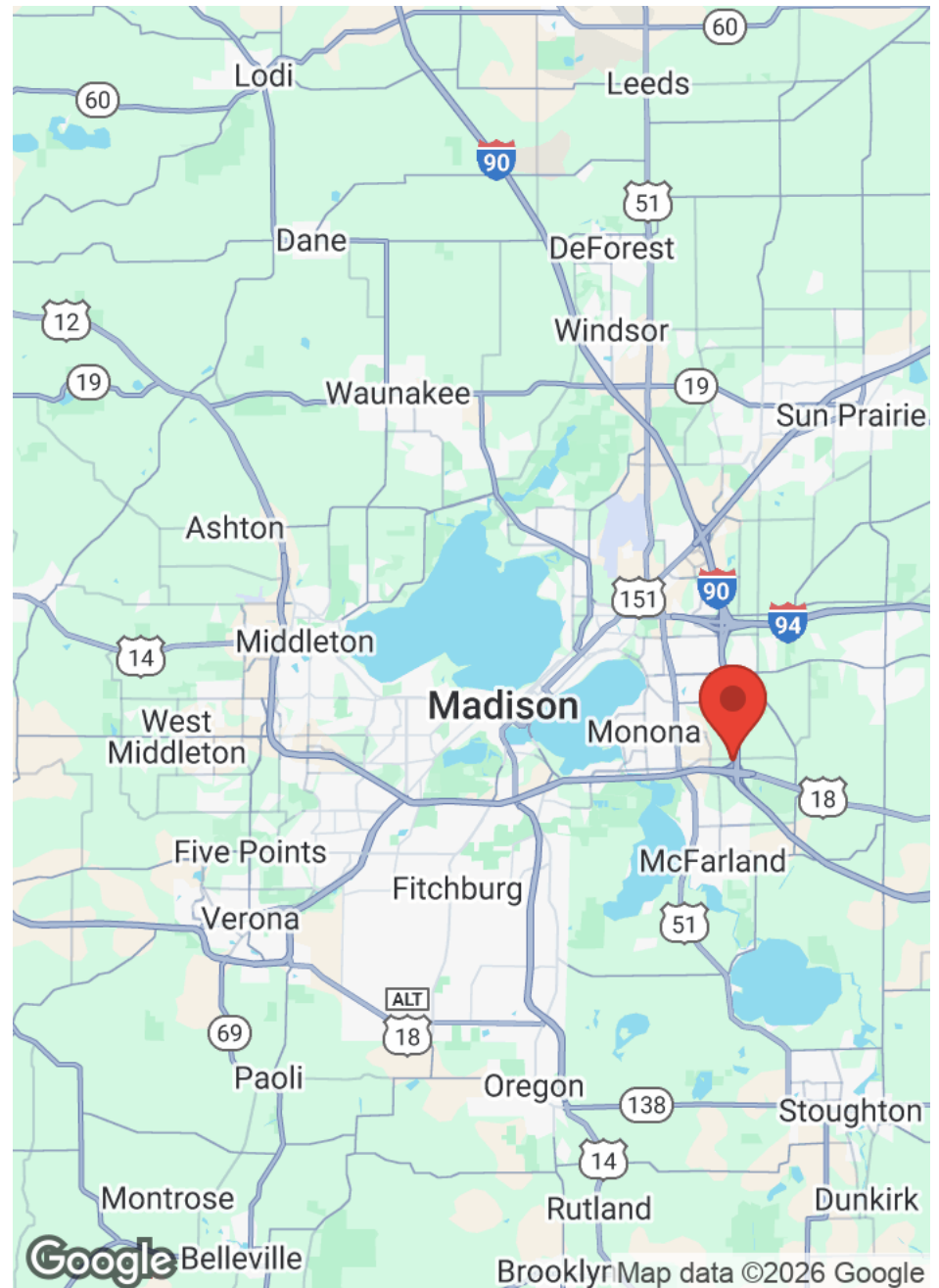
LOCATION MAPS

5821 Femrite Drive | Madison, WI 53718



BRYANT MEYER, CCIM
(608) 443-1004
bmeyer@oakbrookcorp.com

TONY KEUNTJES
(608) 443-1039
akeuntjes@oakbrookcorp.com



 **Oakbrook**
Integrated Real Estate Services

AERIAL MAP

5821 Femrite Drive | Madison, WI 53718



BRYANT MEYER, CCIM
(608) 443-1004
bmeyer@oakbrookcorp.com

TONY KEUNTJES
(608) 443-1039
akeuntjes@oakbrookcorp.com

Oakbrook
Integrated Real Estate Services

DISCLOSURE TO CUSTOMER

5821 Femrite

5821 Femrite Drive | Madison, WI 53718

State of Wisconsin - Disclose to Non-Residential Customers

Prior to negotiating on your behalf the brokerage firm, or an agent associated with the firm, must provide you the following disclosure statement:

DISCLOSURE TO CUSTOMERS

You are a customer of the brokerage firm (hereinafter Firm). The Firm is either an agent of another party in the transaction or a subagent of another firm that is the agent of another party in the transaction. A broker or a salesperson acting on behalf of the Firm may provide brokerage services to you. Whenever the Firm is providing brokerage services to you, the Firm and its brokers and salespersons (hereinafter Agents) owe you, the customer, the following duties:

- (a) The duty to provide brokerage services to you fairly and honestly.
 - (b) The duty to exercise reasonable skill and care in providing brokerage services to you.
 - (c) The duty to provide you with accurate information about market conditions within a reasonable time if you request it, unless disclosure of the information is prohibited by law.
 - (d) The duty to disclose to you in writing certain Material Adverse Facts about a property, unless disclosure of the information is prohibited by law. (See Definition of Material Adverse Facts below).
 - (e) The duty to protect your confidentiality. Unless the law requires it, the Firm and its Agents will not disclose your confidential information or the confidential information of other parties.
 - (f) The duty to safeguard trust funds and proposals in an objective and unbiased manner and disclose the advantages and disadvantages of the proposals. other property held by the Firm or its Agents.
 - (g) The duty, when negotiating, to present contract proposals in an objective and unbiased manner and disclose the advantages and disadvantages of the proposals.
- Please review this information carefully. An Agent of the Firm can answer your questions about brokerage services, but if you need legal advice, tax advice, or a professional home inspection, contact an attorney, tax advisor, or home inspector. This disclosure is required by section 452.135 of the Wisconsin statutes and is for information only. It is a plain-language summary of the duties owed to a customer under section 452.133(1) of the Wisconsin statutes.

CONFIDENTIALITY NOTICE TO CUSTOMERS

The Firm and its Agents will keep confidential any information given to the Firm or its Agents in confidence, or any information obtained by the Firm and its Agents that a reasonable person would want to be kept confidential, unless the information must be disclosed by law or you authorize the Firm to disclose particular information. The Firm and its Agents shall continue to keep the information confidential after the Firm is no longer providing brokerage services to you. • The following information is required to be disclosed by law: 1. Material Adverse Facts, as defined in Wis. Stat. § 452.01(5g) (see "Definition of Material Adverse Facts" below). 2. Any facts known by the Firm or its Agents that contradict any information included in a written inspection report on the property or real estate that is the subject of the transaction. To ensure that the Firm and its Agents are aware of what specific information you consider confidential, you may list that information below. At a later time, you may also provide the Firm or its Agents with other information you consider to be confidential.

CONFIDENTIAL INFORMATION:

NON- CONFIDENTIAL INFORMATION (the following information may be disclosed by the Firm and its Agents): _____

(Insert information you authorize to be disclosed, such as financial qualification information.)

DEFINITION OF MATERIAL ADVERSE FACTS

A "Material Adverse Fact" is defined in Wis. Stat. § 452.01(5g) as an Adverse Fact that a party indicates is of such significance, or that is generally recognized by a competent licensee as being of such significance to a reasonable party, that it affects or would affect the party's decision to enter into a contract or agreement concerning a transaction or affects or would affect the party's decision about the terms of such a contract or agreement. An "Adverse Fact" is defined in Wis. Stat. § 452.01(1e) as a condition or occurrence that a competent licensee generally recognizes will significantly and adversely affect the value of the property, significantly reduce the structural integrity of improvements to real estate, or present a significant health risk to occupants of the property; or information that indicates that a party to a transaction is not able to or does not intend to meet his or her obligations under a contract or agreement made concerning the transaction.

NOTICE ABOUT SEX OFFENDER REGISTRY You may obtain information about the sex offender registry and persons registered with the registry by contacting the Wisconsin Department of Corrections on the Internet at <http://www.doc.wi.gov> or by telephone at 608-240-5830.