



**+/-
225-2,280SQFT**

**\$350-
2100/MONTH**

FOR LEASE

**1303 11th Street
Monroe, WI**

**COMMERICAL SPACE
FOR LEASE IN
BEAUTIFUL HISTORIC
HOME**



MITCH QUADE

 **cell/text 608.558.1036**

THE INFORMATION CONTAINED HEREIN HAS BEEN OBTAINED FROM SOURCES DEEMED RELIABLE BUT HAS NOT BEEN VERIFIED, AND NO GUARANTEE, WARRANTY OR REPRESENTATION, EITHER EXPRESS OR IMPLIED, IS MADE WITH RESPECT TO SUCH INFORMATION. TERMS OF SALE OR LEASE AND AVAILABILITY ARE SUBJECT TO CHANGE OR WITHDRAWAL WITHOUT NOTICE.

FOR MORE INFO: TEXT EXITMQ TO 85377



AVAILABLE SPACE:

MAIN FLOOR: RESTAURANT/RETAIL/COMMERCIAL SPACE
 +/- 1,180 SQUARE FEET
 \$1,500/MONTH + UTILITIES

SECOND FLOOR: FOUR OFFICES/STUDIOS
 +/- 1,100 SQUARE FEET
 \$350/MONTH PER OFFICE

DISCOUNTED RATE FOR ENTIRE SPACE \$2100/MONTH +
 UTILITIES



MITCH QUADE
 ☎ cell/text 608.558.1036
mitch@exitcommercialgroup.com



THE MONROE ARTS CENTER IS SEEKING A COMMERCIAL TENANT OR TENANTS FOR ITS BEAUTIFULLY RESTORED HISTORIC ROSE HOUSE TO COMPLEMENT ITS ARTS AND EVENT OFFERINGS.

THE MAIN FLOOR FEATURES BEAUTIFULLY RESTORED WOOD FLOORS, HIGH CEILINGS, STAINED GLASS ACCENT WINDOWS, NEW UTILITIES/MECHANICALS, A STUBBED-IN KITCHEN, AND POSSIBLE USE OF THE COVERED FRONT PORCH AND SIDE PATIO. COFFEE SHOP? WINE BAR? ARTSY RETAIL? COME DO BUSINESS WITH MAC'S ARTS AND EVENT PATRONS!

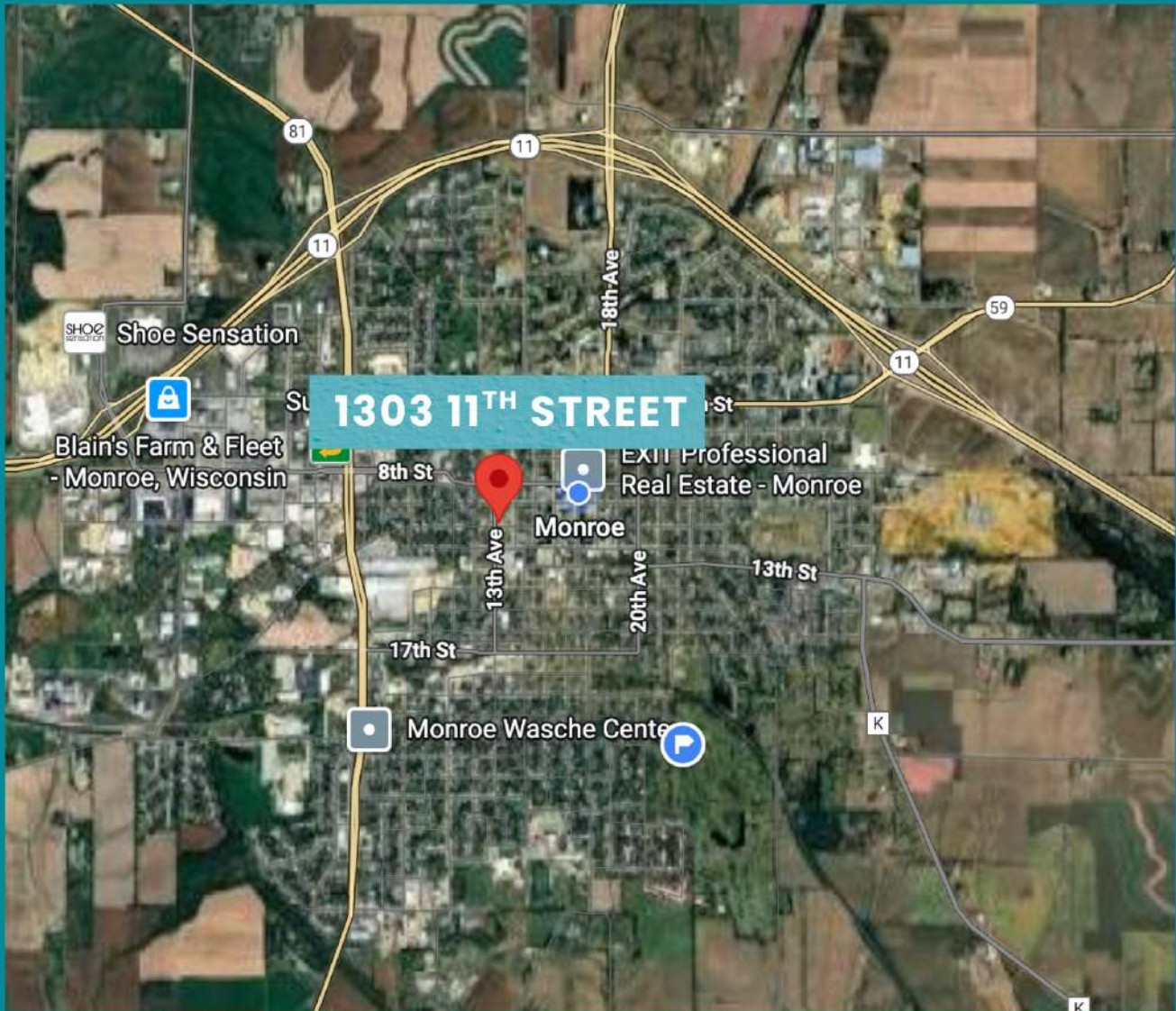
THE SECOND FLOOR FEATURES FOUR AIRY OFFICES. PERFECT FOR PROFESSIONAL OFFICE OR STUDIO SPACE WITH LOTS OF CHARACTER, BRIGHT SPACE, AND ATTRACTIVE VIEWS.

GIVE US A CALL TO DISCUSS YOUR IDEAS!



MITCH QUADE
cell/text 608.558.1036
mitch@exitcommercialgroup.com





DEMOGRAPHICS*

	1 MILE	5 MILES	10 MILES
POPULATION	9,258	13,895.	19,037
EMPLOYMENT	15,875	18,389	20,089
HOUSEHOLDS	4,152	6,074	8,348
AVG.HH INCOME	\$80,134	\$87,181	\$89,430

*SOURCE: COSTAR

TRAFFIC COUNT*

13TH AVE: 3100
11TH STREET: 870

*SOURCE: WI DOT



MITCH QUADE
 cell/text 608.558.1036
mitch@exitcommercialgroup.com

DISCLOSURE TO NON-RESIDENTIAL CUSTOMERS

1 Prior to negotiating on your behalf the brokerage firm, or an agent associated with the firm, must provide you the
2 following disclosure statement:

3 **DISCLOSURE TO CUSTOMERS** You are a customer of the brokerage firm (hereinafter Firm). The Firm is either an agent
4 of another party in the transaction or a subagent of another firm that is the agent of another party in the transaction. A
5 broker or a salesperson acting on behalf of the Firm may provide brokerage services to you. Whenever the Firm is
6 providing brokerage services to you, the Firm and its brokers and salespersons (hereinafter Agents) owe you, the
7 customer, the following duties:

8 (a) The duty to provide brokerage services to you fairly and honestly.

9 (b) The duty to exercise reasonable skill and care in providing brokerage services to you.

10 (c) The duty to provide you with accurate information about market conditions within a reasonable time if you request
11 it, unless disclosure of the information is prohibited by law.

12 (d) The duty to disclose to you in writing certain Material Adverse Facts about a property, unless disclosure of the
13 information is prohibited by law (see lines 42-51).

14 (e) The duty to protect your confidentiality. Unless the law requires it, the Firm and its Agents will not disclose your
15 confidential information or the confidential information of other parties (see lines 23-41).

16 (f) The duty to safeguard trust funds and other property held by the Firm or its Agents.

17 (g) The duty, when negotiating, to present contract proposals in an objective and unbiased manner and disclose the
18 advantages and disadvantages of the proposals.

19 Please review this information carefully. An Agent of the Firm can answer your questions about brokerage services,
20 but if you need legal advice, tax advice, or a professional home inspection, contact an attorney, tax advisor, or home
21 inspector. This disclosure is required by section 452.135 of the Wisconsin statutes and is for information only. It is a
22 plain-language summary of the duties owed to a customer under section 452.133(1) of the Wisconsin statutes.

23 **CONFIDENTIALITY NOTICE TO CUSTOMERS** The Firm and its Agents will keep confidential any information given to the
24 Firm or its Agents in confidence, or any information obtained by the Firm and its Agents that a reasonable person
25 would want to be kept confidential, unless the information must be disclosed by law or you authorize the Firm to
26 disclose particular information. The Firm and its Agents shall continue to keep the information confidential after the
27 Firm is no longer providing brokerage services to you.

28 The following information is required to be disclosed by law:

29 1. Material Adverse Facts, as defined in Wis. Stat. § 452.01(5g) (see lines 42-51).

30 2. Any facts known by the Firm or its Agents that contradict any information included in a written inspection
31 report on the property or real estate that is the subject of the transaction.

32 To ensure that the Firm and its Agents are aware of what specific information you consider confidential, you may
33 list that information below (see lines 35-41) or provide that information to the Firm or its Agents by other means. At a
34 later time, you may also provide the Firm or its Agents with other information you consider to be confidential.

35 **CONFIDENTIAL INFORMATION:** _____

36 _____

37 _____

38 **NON-CONFIDENTIAL INFORMATION** (the following information may be disclosed by the Firm and its Agents): _____

39 _____

40 _____

41 _____ *(Insert information you authorize to be disclosed, such as financial qualification information.)*

42 **DEFINITION OF MATERIAL ADVERSE FACTS**

43 A "Material Adverse Fact" is defined in Wis. Stat. § 452.01(5g) as an Adverse Fact that a party indicates is of such
44 significance, or that is generally recognized by a competent licensee as being of such significance to a reasonable
45 party, that it affects or would affect the party's decision to enter into a contract or agreement concerning a transaction
46 or affects or would affect the party's decision about the terms of such a contract or agreement.

47 An "Adverse Fact" is defined in Wis. Stat. § 452.01(1e) as a condition or occurrence that a competent licensee
48 generally recognizes will significantly and adversely affect the value of the property, significantly reduce the structural
49 integrity of improvements to real estate, or present a significant health risk to occupants of the property; or information
50 that indicates that a party to a transaction is not able to or does not intend to meet his or her obligations under a
51 contract or agreement made concerning the transaction.

52 **NOTICE ABOUT SEX OFFENDER REGISTRY** You may obtain information about the sex offender registry and persons
53 registered with the registry by contacting the Wisconsin Department of Corrections on the Internet at
54 <http://www.doc.wi.gov> or by telephone at 608-240-5830.

No representation is made as to the legal validity of any provision or the adequacy of any provision in any specific transaction.

Copyright © 2016 by Wisconsin REALTORS® Association

Drafted by Attorney Debra Peterson Conrad

EXIT Professional Real Estate, 912 17th Avenue Menasha, WI 54956

Phone: 608-4267111

Fax:

Jana Cieschell

Produced with zipForm® by zipLogix. 18070 Fifteen Mile Road, Fraser, Michigan 48026 www.ziplogix.com