

Building for Sale

336 N Spring St, Columbus WI 53925



Property Highlights

- Own a piece of history along the Craw Fish River
- Located in a TIF district
- Large vacant lot adjacent to the building for parking, up to 66 vehicles
- The property has been cleaned and all junk removed
- See attached sheet for all property updates

Property Summary

Sale Price	\$310,000
Building Size	9,576 sf
Lot Size	1.02 acres
Year Built	1919
Zoning	Light Industrial
Parcel No.	11211 680.03 11211 676.03
2025 Total Assessments	\$319,300

Daniel Toennies
608-217-2754

Daniel.Toennies@madisoncommercialre.com

T Michael Osborne, CCIM, SIOR
608-575-1777

Mike.Osborne@madisoncommercialre.com

Building for Sale

336 N Spring St

Columbus WI 53925



Daniel Toennies
608-217-2754

Daniel.Toennies@madisoncommercialre.com

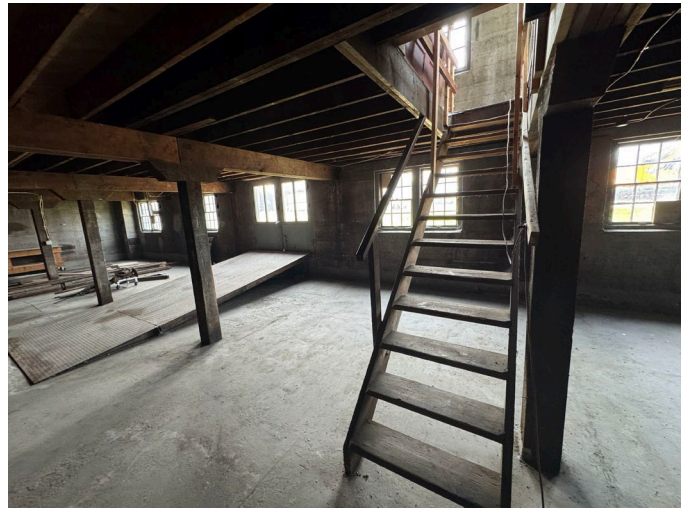
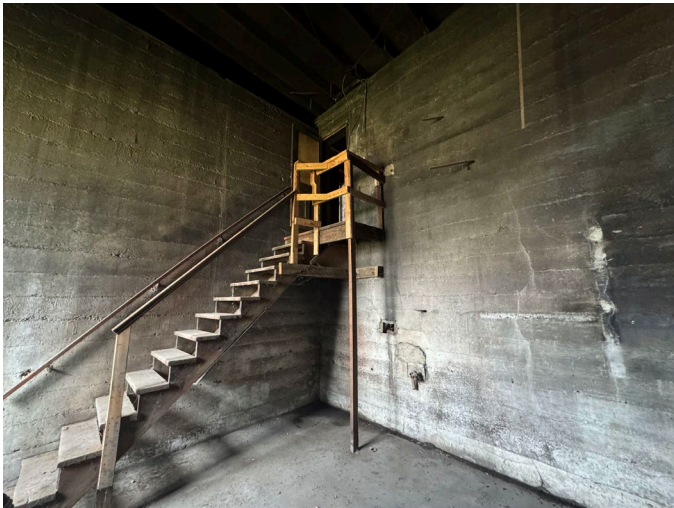
T Michael Osborne, CCIM, SIOR
608-575-1777

Mike.Osborne@madisoncommercialre.com

Building for Sale

336 N Spring St

Columbus WI 53925



Daniel Toennies
608-217-2754

Daniel.Toennies@madisoncommercialre.com

T Michael Osborne, CCIM, SIOR
608-575-1777

Mike.Osborne@madisoncommercialre.com

Madison Commercial Real Estate LLC, 5609 Medical Cr, Suite 202, Madison WI 53719

Building for Sale

336 N Spring St

Columbus WI 53925



Property Improvements

Vacant Lot

- Removed all junk piles
- Cut down all trees
- Had all stumps dug out
- Land was excavated and leveled out

Riverside of Property

- Tore down and removed two old run down buildings
- Excavated and leveled ground where buildings were
- Cleaned up shoreline and removed invasive boxelder trees

Carriage House Building

- Installed the following, brand new:
 - Metal Roof
 - Metal sofit
 - Metal rain gutters
 - Garage door & opener
 - LP siding & 4' surround decorative mason stone
 - Separate electrical run under ground to building on separate meter
 - Power box, lights & outlets by Commercial Electrician
 - Concrete floor
 - Raised entire building and replaced seal plates with treated wood and metal L shaped supports for every stud connection to seal plate
 - Side sliding doors & rail hardware
 - Replaced rotten/broken interior siding boards
- Removed all outdated & noncompliant electrical
- Removed all junk

Main Building

- Removed the following:
 - Dated knob & tube electrical
 - Non-permitted bathrooms installed not to code
 - Non-permitted plumbing installed not to code
 - Non-structural/non-permitted walls installed not to code
 - Two outdated/unsafe wood burning stoves
 - Non-permitted HVAC installed not to code
 - Paint cans, oil cans, radiator fluid cans
 - All nails & screws from all wood support beams
- Painted all exterior windows, doors & railings
- Structural engineer and architect create & fabricate custom saddle supports to enhance current structural beams. Custom Saddle Supports were installed by licensed GC

Daniel Toennies
608-217-2754

Daniel.Toennies@madisoncommercialre.com

T Michael Osborne, CCIM, SIOR
608-575-1777

Mike.Osborne@madisoncommercialre.com

BROKER DISCLOSURE TO NON-RESIDENTIAL CUSTOMERS

1 Prior to negotiating on your behalf the Broker must provide you the following disclosure statement:

2 **BROKER DISCLOSURE TO CUSTOMERS**

3 You are a customer of the broker. The broker is either an agent of another party in the transaction or a subagent of another broker
4 who is the agent of another party in the transaction. The broker, or a salesperson acting on behalf of the broker, may provide
5 brokerage services to you. Whenever the broker is providing brokerage services to you, the broker owes you, the customer, the
6 following duties:

- 7 ■ The duty to provide brokerage services to you fairly and honestly.
- 8 ■ The duty to exercise reasonable skill and care in providing brokerage services to you.
- 9 ■ The duty to provide you with accurate information about market conditions with a reasonable time if you request it, unless
10 disclosure of the information is prohibited by law.
- 11 ■ The duty to disclose to you in writing certain material adverse facts about a property, unless disclosure of the information is
12 prohibited by law (**See Lines 47-55**).
- 13 ■ The duty to protect your confidentiality. Unless the law requires it, the broker will not disclose your confidential information or the
14 confidential information of other parties (**See Lines 22-39**).
- 15 ■ The duty to safeguard trust funds and other property the broker holds.
- 16 ■ The duty, when negotiating, to present contract proposals in an objective and unbiased manner and disclose the advantages and
17 disadvantages of the proposals.

18 Please review this information carefully. A broker or salesperson can answer your questions about brokerage services, but if you
19 need legal advice, tax advice, or a professional home inspection, contact an attorney, tax advisor, or home inspector.
20 This disclosure is required by section 452.135 of the Wisconsin statutes and is for information only. It is a plain-language summary of
21 A broker's duties to a customer under section 452.133 (1) of the Wisconsin statutes.

22 **CONFIDENTIALITY NOTICE TO CUSTOMERS**

23 BROKER WILL KEEP CONFIDENTIAL ANY INFORMATION GIVEN TO BROKER IN CONFIDENCE, OR ANY INFORMATION
24 OBTAINED BY BROKER THAT HE OR SHE KNOWS A REASONABLE PERSON WOULD WANT TO BE KEPT CONFIDENTIAL,
25 UNLESS THE INFORMATION MUST BE DISCLOSED BY LAW OR YOU AUTHORIZE THE BROKER TO DISCLOSE PARTICULAR
26 INFORMATION. A BROKER SHALL CONTINUE TO KEEP THE INFORMATION CONFIDENTIAL AFTER BROKER IS NO LONGER
27 PROVIDING BROKERAGE SERVICES TO YOU.

28 THE FOLLOWING INFORMATION IS REQUIRED TO BE DISCLOSED BY LAW:

- 29 1. MATERIAL ADVERSE FACTS, AS DEFINED IN SECTION 452.01 (5g) OF THE WISCONSIN STATUTES (**SEE LINES 47-55**).
- 30 2. ANY FACTS KNOWN BY THE BROKER THAT CONTRADICT ANY INFORMATION INCLUDED IN A WRITTEN INSPECTION
31 REPORT ON THE PROPERTY OR REAL ESTATE THAT IS THE SUBJECT OF THE TRANSACTION.

32 TO ENSURE THAT THE BROKER IS AWARE OF WHAT SPECIFIC INFORMATION YOU CONSIDER CONFIDENTIAL, YOU MAY LIST
33 THAT INFORMATION BELOW (**SEE LINES 35-36**). AT A LATER TIME, YOU MAY ALSO PROVIDE THE BROKER WITH OTHER
34 INFORMATION YOU CONSIDER TO BE CONFIDENTIAL.

35 **CONFIDENTIAL INFORMATION:** _____

37 **NON-CONFIDENTIAL INFORMATION** (The following information may be disclosed by Broker): _____

39 *(INSERT INFORMATION YOU AUTHORIZE THE BROKER TO DISCLOSE SUCH AS FINANCIAL QUALIFICATION INFORMATION.)*

40 **CONSENT TO TELEPHONE SOLICITATION**

41 I/We agree that the Broker and any affiliated settlement service providers (for example, a mortgage company or title company) may
42 call our/my home or cell phone numbers regarding issues, goods and services related to the real estate transaction until I/we
43 withdraw this consent in writing. **List Home/Cell Numbers:** _____

44 **SEX OFFENDER REGISTRY**

45 *Notice: You may obtain information about the sex offender registry and persons registered with the registry by contacting the*
46 *Wisconsin Department of Corrections on the Internet at <http://offender.doc.state.wi.us/public/> or by phone at 608-240-5830.*

47 **DEFINITION OF MATERIAL ADVERSE FACTS**

48 A "material adverse fact" is defined in Wis. Stat. § 452.01 (5g) as an adverse fact that a party indicates is of such significance, or that
49 is generally recognized by a competent licensee as being of such significance to a reasonable party, that it affects or would affect
50 the party's decision to enter into a contract or agreement concerning a transaction or affects or would affect the party's decision
51 about the terms of such a contract or agreement. An "adverse fact" is defined in Wis. Stat. § 452.01 (1e) as a condition or occurrence
52 that a competent licensee generally recognizes will significantly and adversely affect the value of the property, significantly reduce
53 the structural integrity of improvements to real estate, or present a significant health risk to occupants of the property; or information
54 that indicates that a party to a transaction is not able to or does not intend to meet his or her obligations under a contract or
55 agreement made concerning the transaction.