



For Sale

2749 Town Hall Road, Lot 2 Springdale, WI 53716

Land available on the corner of Town Hall
Road & Ridgeview Road

Space Available	Lot 2
Site Size	3.629 AC
Price	\$870,000
PSF	\$5.50
Future Land Use	Commerical/Mixed-Use

Contact Us

Chris Richards

Partner | Madison

+1 608 628 5895

chris.richards@colliers.com

Colin McLandsborough

Real Estate Advisor

+1 262 309 5597

colin.mclandsborough@colliers.com

Dustin Pate

Senior Real Estate Advisor

+1 608 867 7471

dustin.pate@colliers.com

Colliers | Wisconsin

2501 W Beltline Hwy, suite 505

Madison, WI 53703

P: +1 608 826 9500

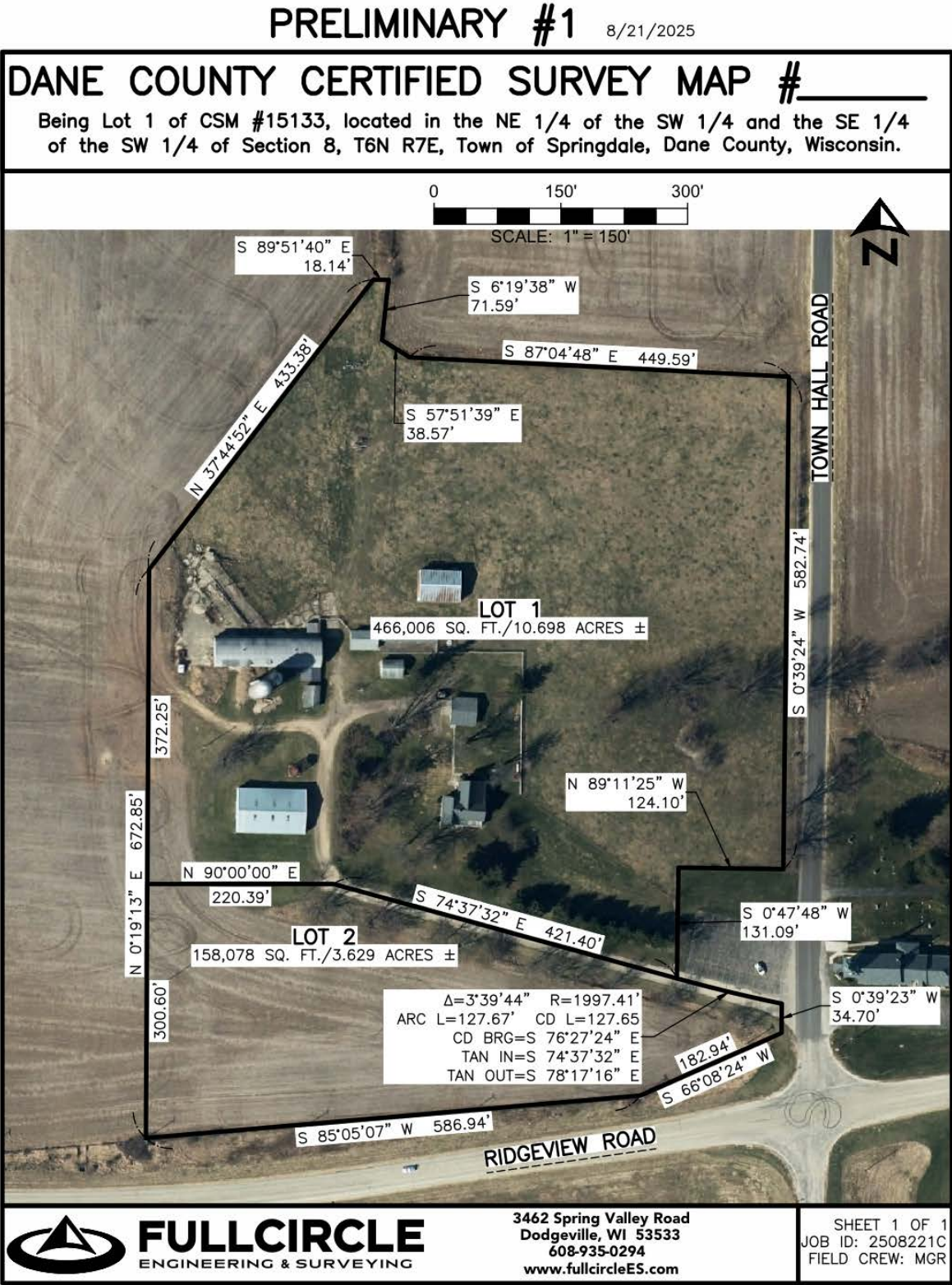
colliers.com

Property Highlights

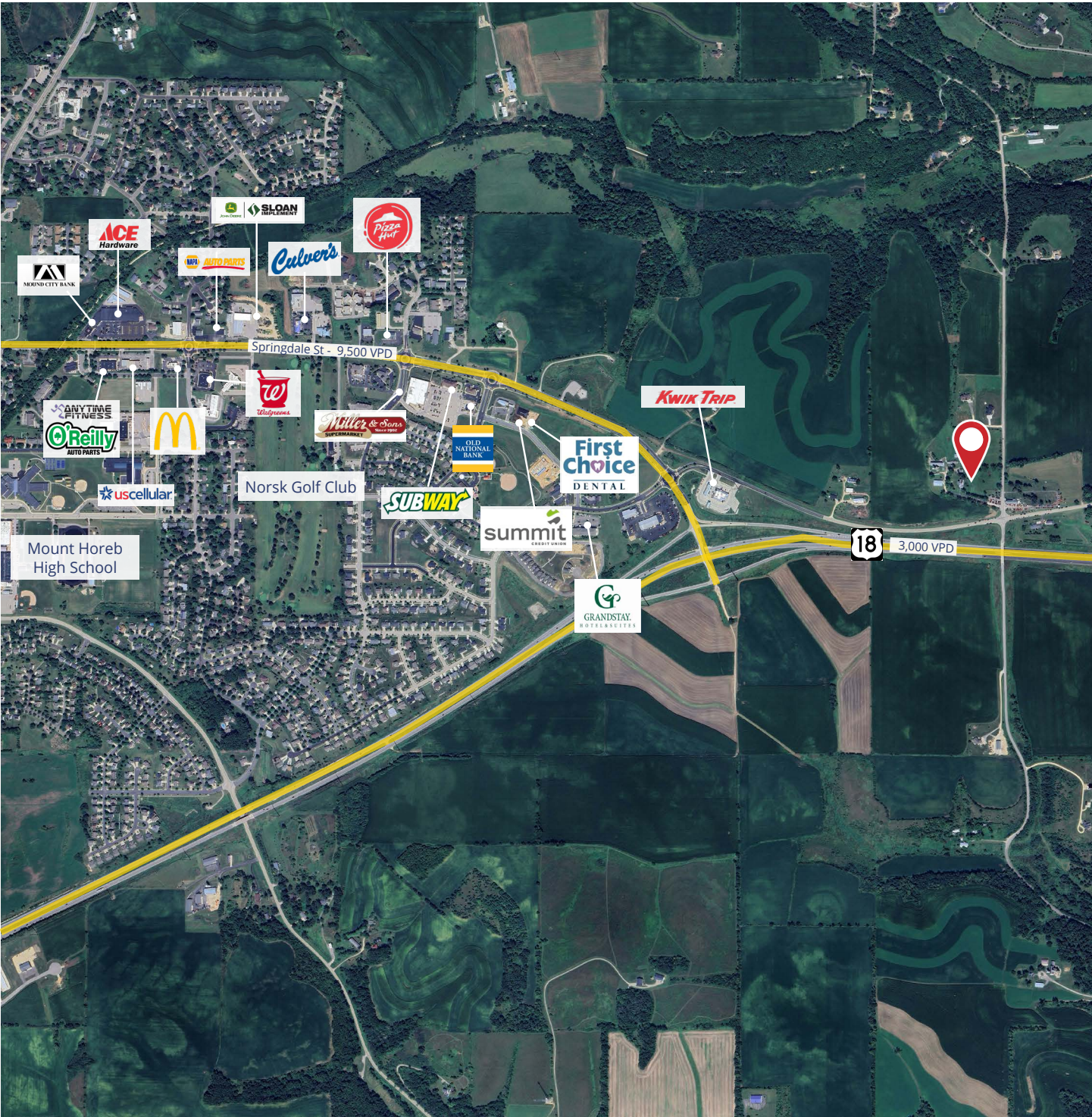
Phenomenal 3.629 acre site with visibility on Highway 18/151 in Mount Horeb, WI. Land is currently in Springdale but will be annexed into the fast-growing Village of Mount Horeb. Future land use is commercial/mixed use and Sellers will provide ample time to Buyers for approvals. Located just behind the Kwik Trip at the off-ramp for Highway 18.



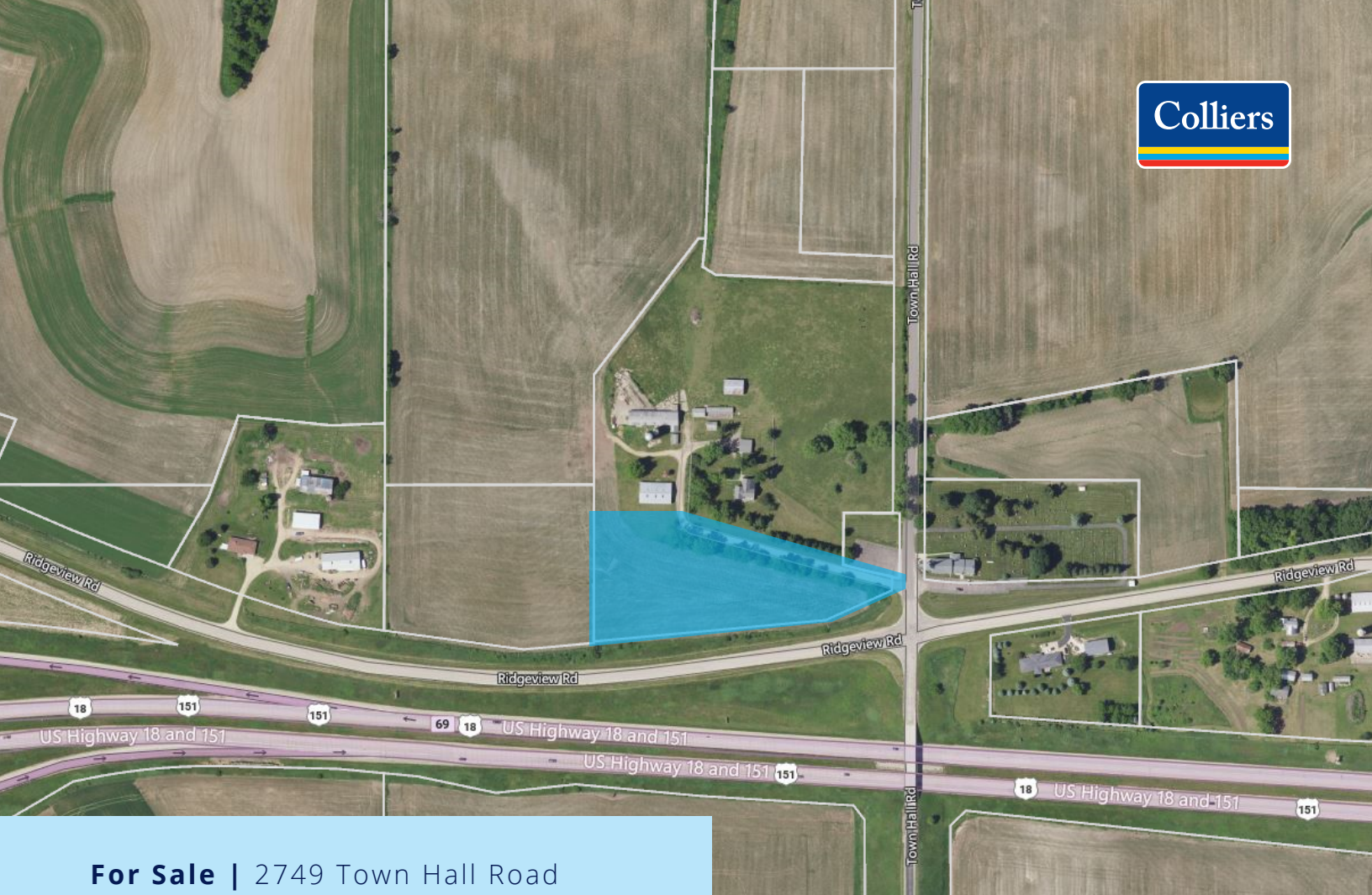
Preliminary CSM



Aerial



Colliers



For Sale | 2749 Town Hall Road

Contact Us:

Chris Richards

Partner

+1 608 628 5895

chris.richards@colliers.com

Colin McLandsborough

Real Estate Advisor

+1 262 309 5597

colin.mclandsborough@colliers.com

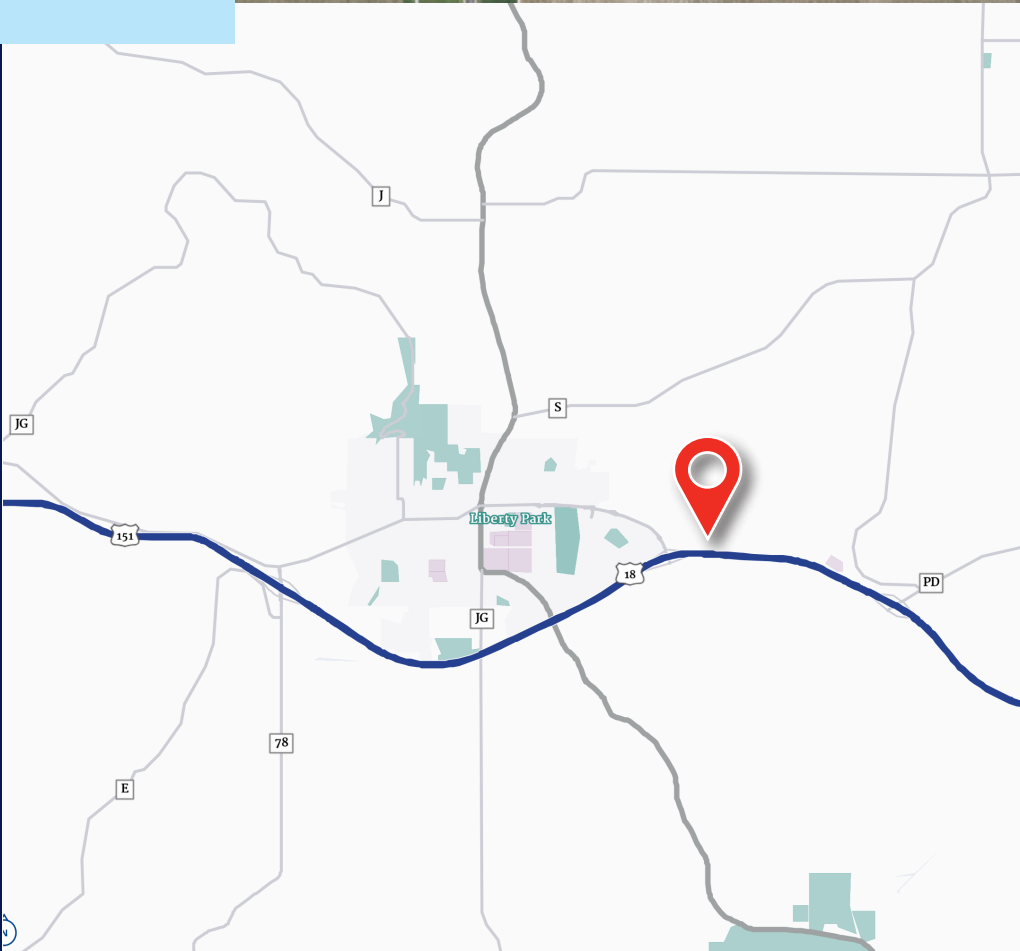
Colliers | Wisconsin

2501 W Beltline Hwy, suite 505

Madison, WI 53703

P: +1 608 826 9500

colliers.com



Copyright © 2024 Colliers International. Information herein has been obtained from sources deemed reliable, however its accuracy cannot be guaranteed. The user is required to conduct their own due diligence and verification.