



FOR LEASE

Available Now

2909 LANDMARK PLACE
MADISON, WI 53713

Price: \$20.75 RSF/Gross

**Class A Office Building
with High Quality Finishes
& Huge 100+ Person
Conference Center**

Now Offering Furnished Individual Office Suites (6 month minimum lease term)



KATIE WEST
Commercial Real Estate Broker
(608) 443-1023
kwest@oakbrookcorp.com

PROPERTY SUMMARY

2909 LANDMARK PLACE | MADISON, WI 53713



Property Summary

Lease Rate:	\$20.75 RSF/Gross
Lease Term:	6 months - 5 years
Building SF:	51,600
Available SF:	5,981
Year Built:	1991
Building Class:	B
Floors:	3
Parking:	130
Parking Ratio:	2.86
Zoning:	B-1

Property Overview

Huge conference center that seats 100 people. Free of charge to tenants. Class A facility features high-quality finishes with a mixture of private offices and open spaces. Common conference/training rooms and large break room with outdoor patio area. Generous on-site parking for tenants and guests. Beautiful views of the Capitol, Arboretum, and downtown skyline. Variety of space and floorplan options to choose from; please inquire with the broker.

****Now offering individual office suites. See floor plans for details.****

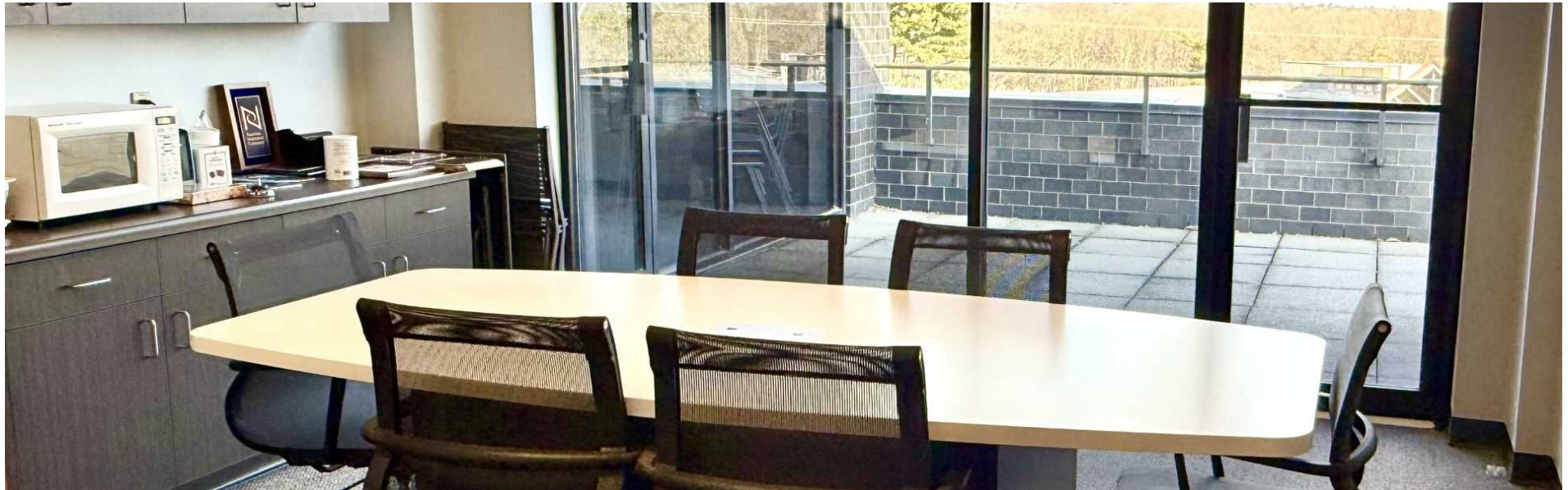
Gross Rent includes CAM and utilities; Tenant pays phone/data and in-suite janitorial service.

Location Overview

Central beltline location for convenient access to east, west, and downtown Madison.

AVAILABLE SPACES

2909 LANDMARK PLACE | MADISON, WI 53713

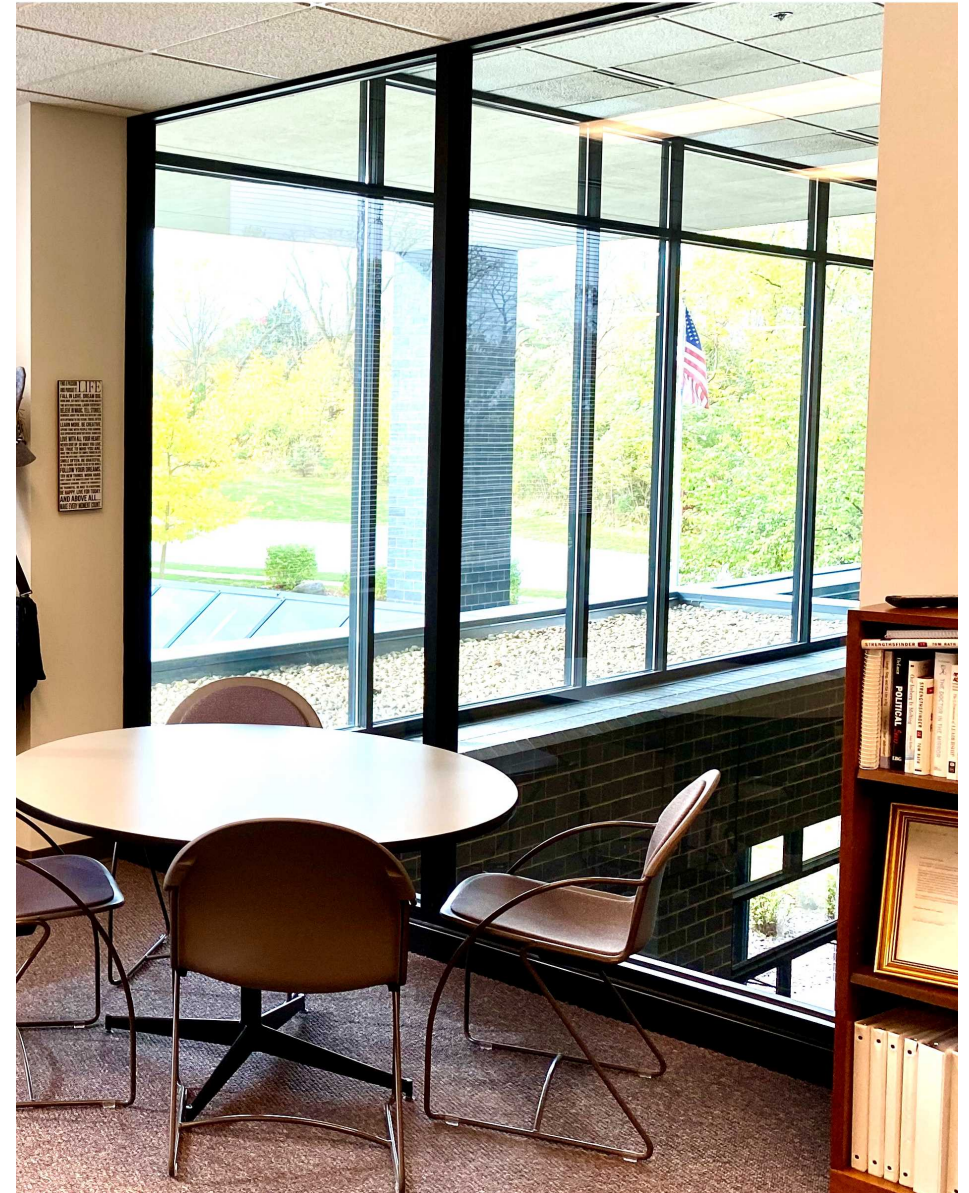


Available Spaces

Suite	Size	Rate	Use	Available
100	2,092	\$20.75 /sf/yr	Office	Now
110	1,931	\$20.75 / sf/yr	Office	Now
215	1,518	\$20.75 / sf/yr	Office	Now
215 B	260	\$350 /mo	Office	Now
215 C	180	\$450 /mo	Office	Now

PROPERTY PHOTOS

2909 LANDMARK PLACE | MADISON, WI 53713



OAKBROOK CORPORATION
2 Science Court, Suite 200
Madison, WI 53711

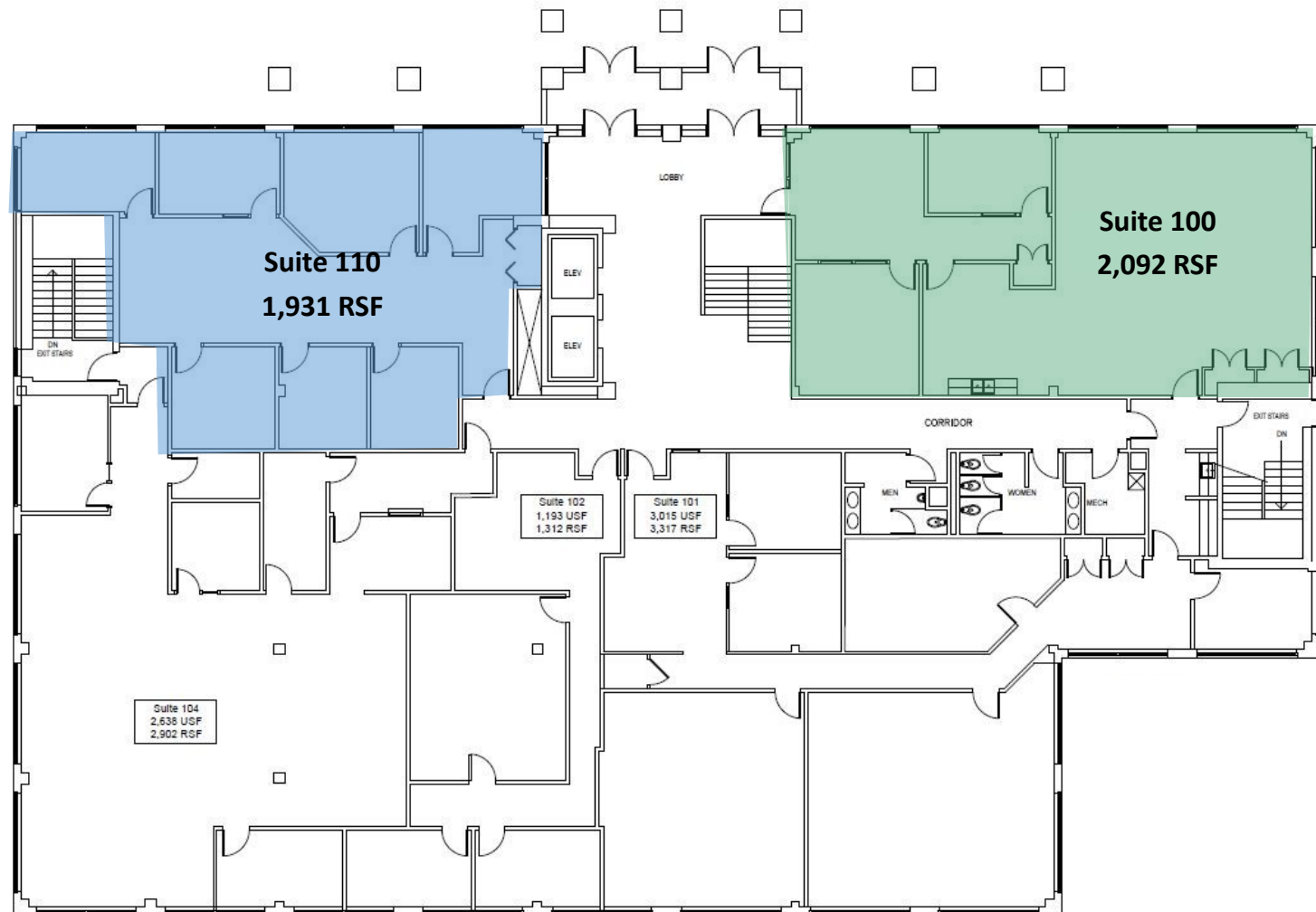
KATIE WEST
Commercial Real Estate Broker
O: (608) 443-1023
C: (608) 833-6333
kwest@oakbrookcorp.com

1ST FLOOR PLAN

2909 LANDMARK PLACE | MADISON, WI 53713

Office Space: Suite 100 - 2,092 SF

Suite 110 - 1,931 SF



OAKBROOK CORPORATION
2 Science Court, Suite 200
Madison, WI 53711

KATIE WEST
Commercial Real Estate Broker
O: (608) 443-1023
C: (608) 833-6333
kwest@oakbrookcorp.com

2ND FLOOR PLAN

2909 LANDMARK PLACE | MADISON, WI 53713

Office Space: Suite 215, 1,518 SF

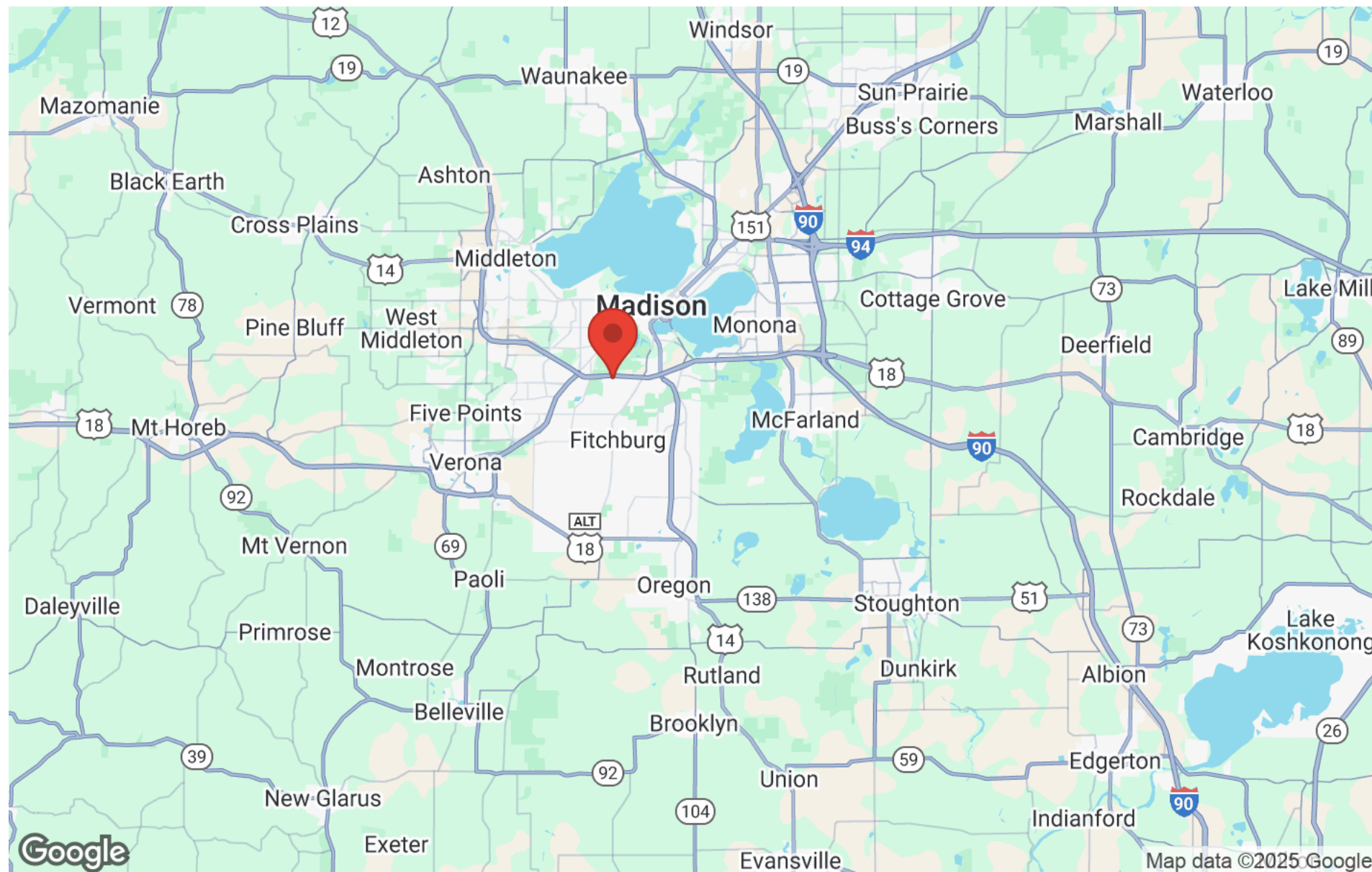
Individual Office Suites: 215B (fits up to 3 people) - \$350/mo – (6 mo min. lease) 260 SF

215C (fits up to 4 people) - \$450/mo – (6 mo min. lease) 180 SF



REGIONAL MAP

2909 LANDMARK PLACE | MADISON, WI 53713



OAKBROOK CORPORATION
2 Science Court, Suite 200
Madison, WI 53711

KATIE WEST
Commercial Real Estate Broker
O: (608) 443-1023
C: (608) 833-6333
kwest@oakbrookcorp.com

BUSINESS MAP

2909 LANDMARK PLACE | MADISON, WI 53713



OAKBROOK CORPORATION
2 Science Court, Suite 200
Madison, WI 53711

KATIE WEST
Commercial Real Estate Broker
O: (608) 443-1023
C: (608) 833-6333
kwest@oakbrookcorp.com

DISCLOSURE TO CUSTOMER

2909 LANDMARK PLACE | MADISON, WI 53713

State of Wisconsin - Disclose to Non-Residential Customers

Prior to negotiating on your behalf the brokerage firm, or an agent associated with the firm, must provide you the following disclosure statement:

DISCLOSURE TO CUSTOMERS

You are a customer of the brokerage firm (hereinafter Firm). The Firm is either an agent of another party in the transaction or a subagent of another firm that is the agent of another party in the transaction. A broker or a salesperson acting on behalf of the Firm may provide brokerage services to you. Whenever the Firm is providing brokerage services to you, the Firm and its brokers and salespersons (hereinafter Agents) owe you, the customer, the following duties:

- (a) The duty to provide brokerage services to you fairly and honestly.
- (b) The duty to exercise reasonable skill and care in providing brokerage services to you.
- (c) The duty to provide you with accurate information about market conditions within a reasonable time if you request it, unless disclosure of the information is prohibited by law.
- (d) The duty to disclose to you in writing certain Material Adverse Facts about a property, unless disclosure of the information is prohibited by law. (See Definition of Material Adverse Facts below).
- (e) The duty to protect your confidentiality. Unless the law requires it, the Firm and its Agents will not disclose your confidential information or the confidential information of other parties.
- (f) The duty to safeguard trust funds and proposals in an objective and unbiased manner and disclose the advantages and disadvantages of the proposals. Other property held by the Firm or its Agents.
- (g) The duty, when negotiating, to present contract proposals in an objective and unbiased manner and disclose the advantages and disadvantages of the proposals.
- Please review this information carefully. An Agent of the Firm can answer your questions about brokerage services, but if you need legal advice, tax advice, or a professional home inspection, contact an attorney, tax advisor, or home inspector. This disclosure is required by section 452.135 of the Wisconsin statutes and is for information only. It is a plain-language summary of the duties owed to a customer under section 452.133(1) of the Wisconsin statutes.

CONFIDENTIALITY NOTICE TO CUSTOMERS

The Firm and its Agents will keep confidential any information given to the Firm or its Agents in confidence, or any information obtained by the Firm and its Agents that a reasonable person would want to be kept confidential, unless the information must be disclosed by law or you authorize the Firm to disclose particular information. The Firm and its Agents shall continue to keep the information confidential after the Firm is no longer providing brokerage services to you. • The following information is required to be disclosed by law: 1. Material Adverse Facts, as defined in Wis. Stat. § 452.01(5g) (see "Definition of Material Adverse Facts" below). 2. Any facts known by the Firm or its Agents that contradict any information included in a written inspection report on the property or real estate that is the subject of the transaction. To ensure that the Firm and its Agents are aware of what specific information you consider confidential, you may list that information below. At a later time, you may also provide the Firm or its Agents with other information you consider to be confidential.

CONFIDENTIAL INFORMATION: _____

NON- CONFIDENTIAL INFORMATION (the following information may be disclosed by the Firm and its Agents): _____

(Insert information you authorize to be disclosed, such as financial qualification information.)

DEFINITION OF MATERIAL ADVERSE FACTS

A "Material Adverse Fact" is defined in Wis. Stat. § 452.01(5g) as an Adverse Fact that a party indicates is of such significance, or that is generally recognized by a competent licensee as being of such significance to a reasonable party, that it affects or would affect the party's decision to enter into a contract or agreement concerning a transaction or affects or would affect the party's decision about the terms of such a contract or agreement. An "Adverse Fact" is defined in Wis. Stat. § 452.01(1e) as a condition or occurrence that a competent licensee generally recognizes will significantly and adversely affect the value of the property, significantly reduce the structural integrity of improvements to real estate, or present a significant health risk to occupants of the property; or information that indicates that a party to a transaction is not able to or does not intend to meet his or her obligations under a contract or agreement made concerning the transaction.

NOTICE ABOUT SEX OFFENDER REGISTRY You may obtain information about the sex offender registry and persons registered with the registry by contacting the Wisconsin Department of Corrections on the Internet at <http://www.doc.wi.gov> or by telephone at 608-240-5830.