

# OFFICE SPACE FOR LEASE

**25 Kessel Court**

MADISON, WI 53711

**Price:**  
**\$15.00 - 17.50/RSF MG**

**SF Available:**  
**2,266 - 7,529 SF**



**TONY KEUNTJES**  
CRE Associate  
(608) 443-1039  
[akeuntjes@oakbrookcorp.com](mailto:akeuntjes@oakbrookcorp.com)

**BRYANT MEYER, CCIM**  
Broker, Associate  
(608) 443-1004  
[bmeyer@oakbrookcorp.com](mailto:bmeyer@oakbrookcorp.com)

# PROPERTY SUMMARY

25 KESSEL COURT | MADISON, WI 53711



## Property Summary

Available SF:	2,266 - 7,529 RSF
Lease Rate:	\$15.00 - 17.50/RSF MG (utilities inc
Lease Term:	Negotiable
Year Built:	1990
Floor:	1st and 2nd Floor
Parking:	100+ Exterior
Parking Ratio:	4.60/1000
Signage:	Beltline Signage Capable
Additional Amenities:	75 Person Training Room
Available:	Now

## Property Overview

- First Floor: 2,266 SF: Suite 100: 5 Offices, Conference Room, Storage Room, Shared Break Room, Cubicle Space

- Second Floor: 2,483 - 7,529 SF: Up to 22 Offices, 2 Conference Rooms, Reception, and Open Work Area

Tenants are separately responsible for phone/data and in-suite janitorial.

A common training room is available for tenant use that can hold roughly 75 persons. Additionally, 100+ surface parking stalls and potentially 1-2 underground garage stalls are available. Occupancy available now.

OAKBROOK CORPORATION  
2 Science Court, Suite 200  
Madison, WI 53711

TONY KEUNTJES  
CRE Associate  
O: (608) 443-1039  
C: (715) 451-3252  
akeuntjes@oakbrookcorp.com

BRYANT MEYER, CCIM  
Broker, Associate  
O: (608) 443-1004  
C: (608) 633-2242  
bmeyer@oakbrookcorp.com



# PROPERTY PHOTOS

25 KESSEL COURT | MADISON, WI 53711



**OAKBROOK CORPORATION**  
2 Science Court, Suite 200  
Madison, WI 53711

**TONY KEUNTJES**  
CRE Associate  
O: (608) 443-1039  
C: (715) 451-3252  
akeuntjes@oakbrookcorp.com

**BRYANT MEYER, CCIM**  
Broker, Associate  
O: (608) 443-1004  
C: (608) 633-2242  
bmeyer@oakbrookcorp.com

# PROPERTY PHOTOS

25 KESSEL COURT | MADISON, WI 53711



**OAKBROOK CORPORATION**  
2 Science Court, Suite 200  
Madison, WI 53711

**TONY KEUNTJES**  
CRE Associate  
O: (608) 443-1039  
C: (715) 451-3252  
akeuntjes@oakbrookcorp.com

**BRYANT MEYER, CCIM**  
Broker, Associate  
O: (608) 443-1004  
C: (608) 633-2242  
bmeyer@oakbrookcorp.com



# PROPERTY PHOTOS

25 KESSEL COURT | MADISON, WI 53711



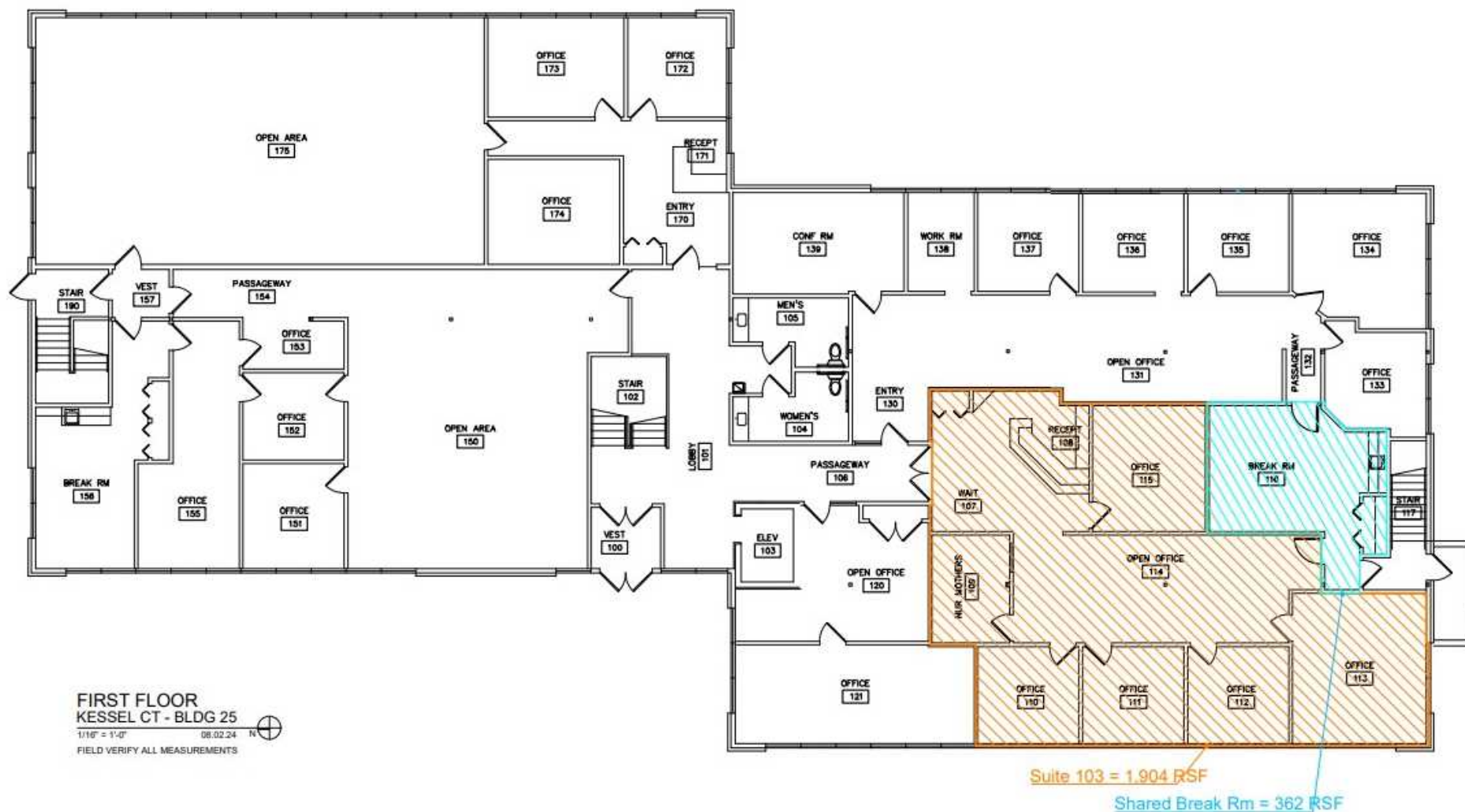
**OAKBROOK CORPORATION**  
2 Science Court, Suite 200  
Madison, WI 53711

**TONY KEUNTJES**  
CRE Associate  
O: (608) 443-1039  
C: (715) 451-3252  
[akeuntjes@oakbrookcorp.com](mailto:akeuntjes@oakbrookcorp.com)

**BRYANT MEYER, CCIM**  
Broker, Associate  
O: (608) 443-1004  
C: (608) 633-2242  
[bmeyer@oakbrookcorp.com](mailto:bmeyer@oakbrookcorp.com)

# 1ST FLOOR

25 KESSEL COURT | MADISON, WI 53711



**OAKBROOK CORPORATION**  
 2 Science Court, Suite 200  
 Madison, WI 53711

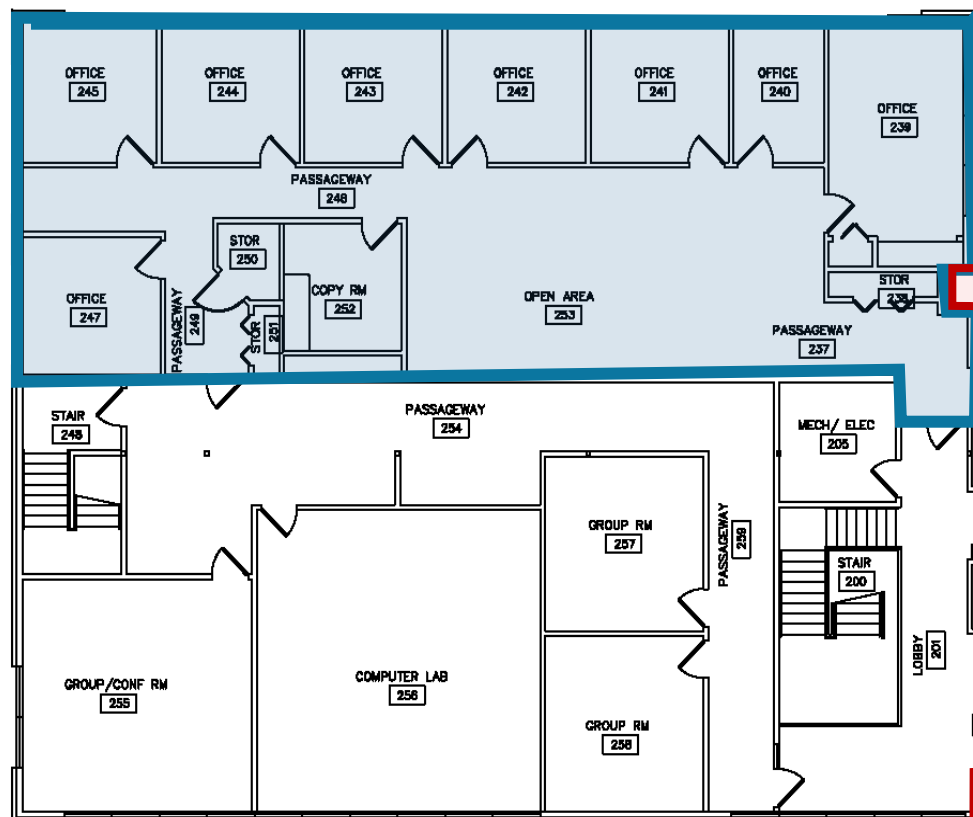
**TONY KEUNTJES**  
 CRE Associate  
 O: (608) 443-1039  
 C: (715) 451-3252  
 akeuntjes@oakbrookcorp.com

**BRYANT MEYER, CCIM**  
 Broker, Associate  
 O: (608) 443-1004  
 C: (608) 633-2242  
 bmeyer@oakbrookcorp.com

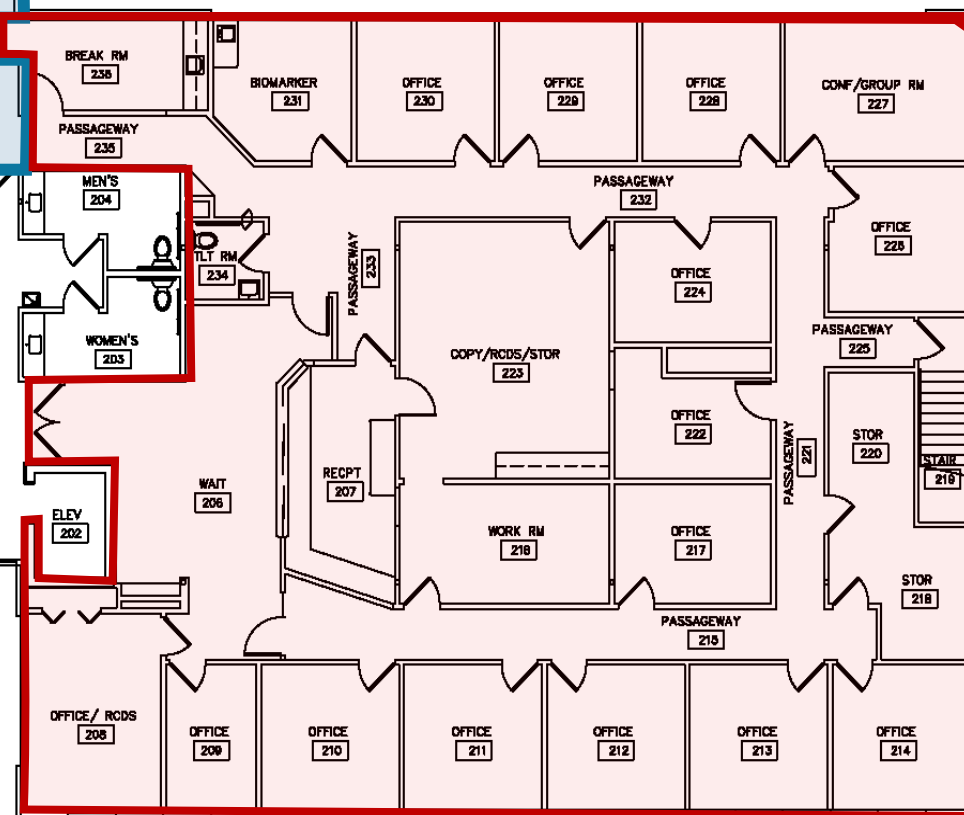
# 2ND FLOOR

25 KESSEL COURT | MADISON, WI 53711

2,483 RSF



5,046 RSF



OAKBROOK CORPORATION  
2 Science Court, Suite 200  
Madison, WI 53711

TONY KEUNTJES  
CRE Associate  
O: (608) 443-1039  
C: (715) 451-3252  
akeuntjes@oakbrookcorp.com

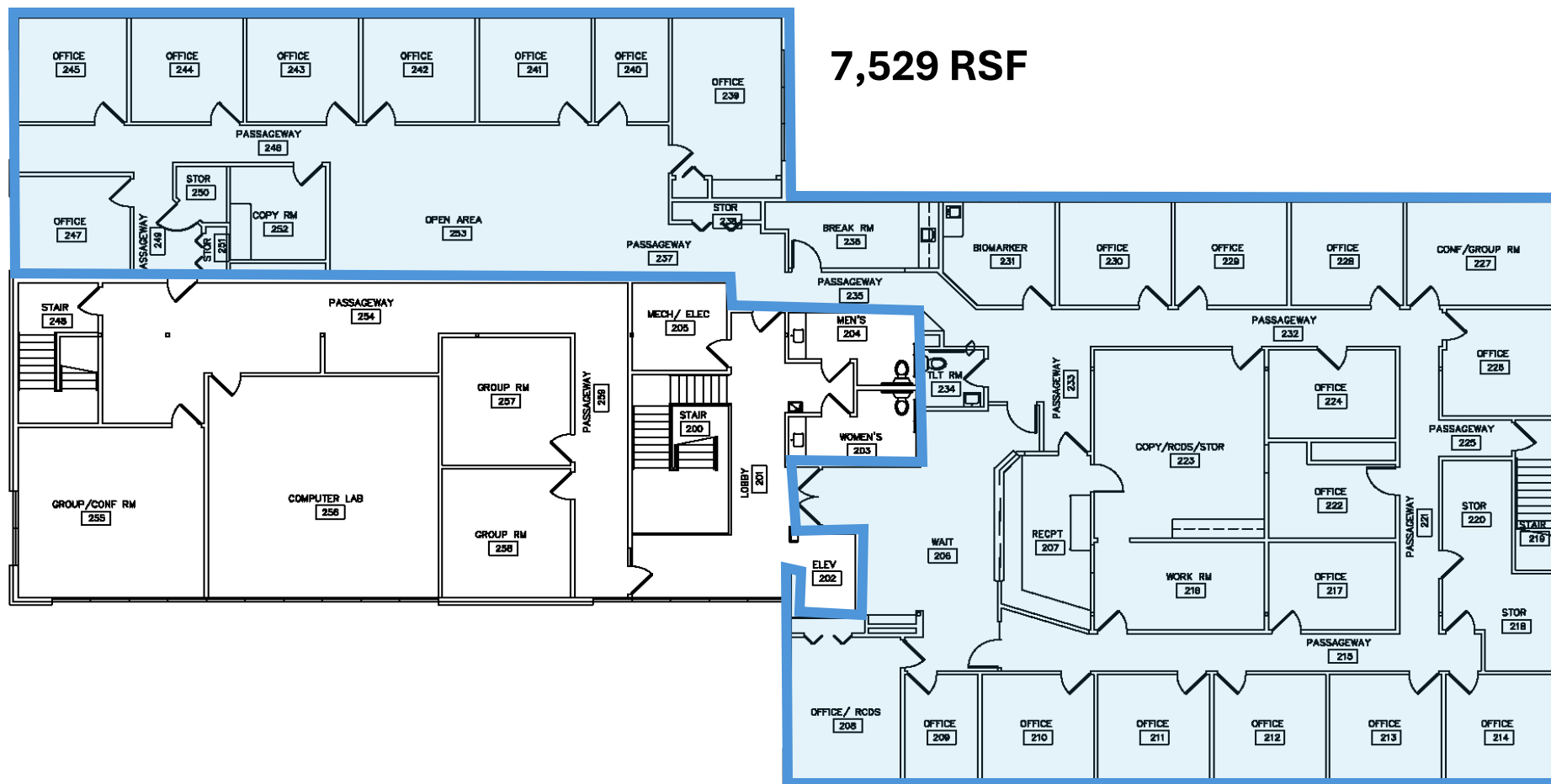
BRYANT MEYER, CCIM  
Broker, Associate  
O: (608) 443-1004  
C: (608) 633-2242  
bmeyer@oakbrookcorp.com

SECOND FLOOR  
KESSEL CT - BLDG 25

NOT TO SCALE 09/13/15 N

# 2ND FLOOR

25 KESSEL COURT | MADISON, WI 53711



**OAKBROOK CORPORATION**  
2 Science Court, Suite 200  
Madison, WI 53711

**TONY KEUNTJES**  
CRE Associate  
O: (608) 443-1039  
C: (715) 451-3252  
akeuntjes@oakbrookcorp.com

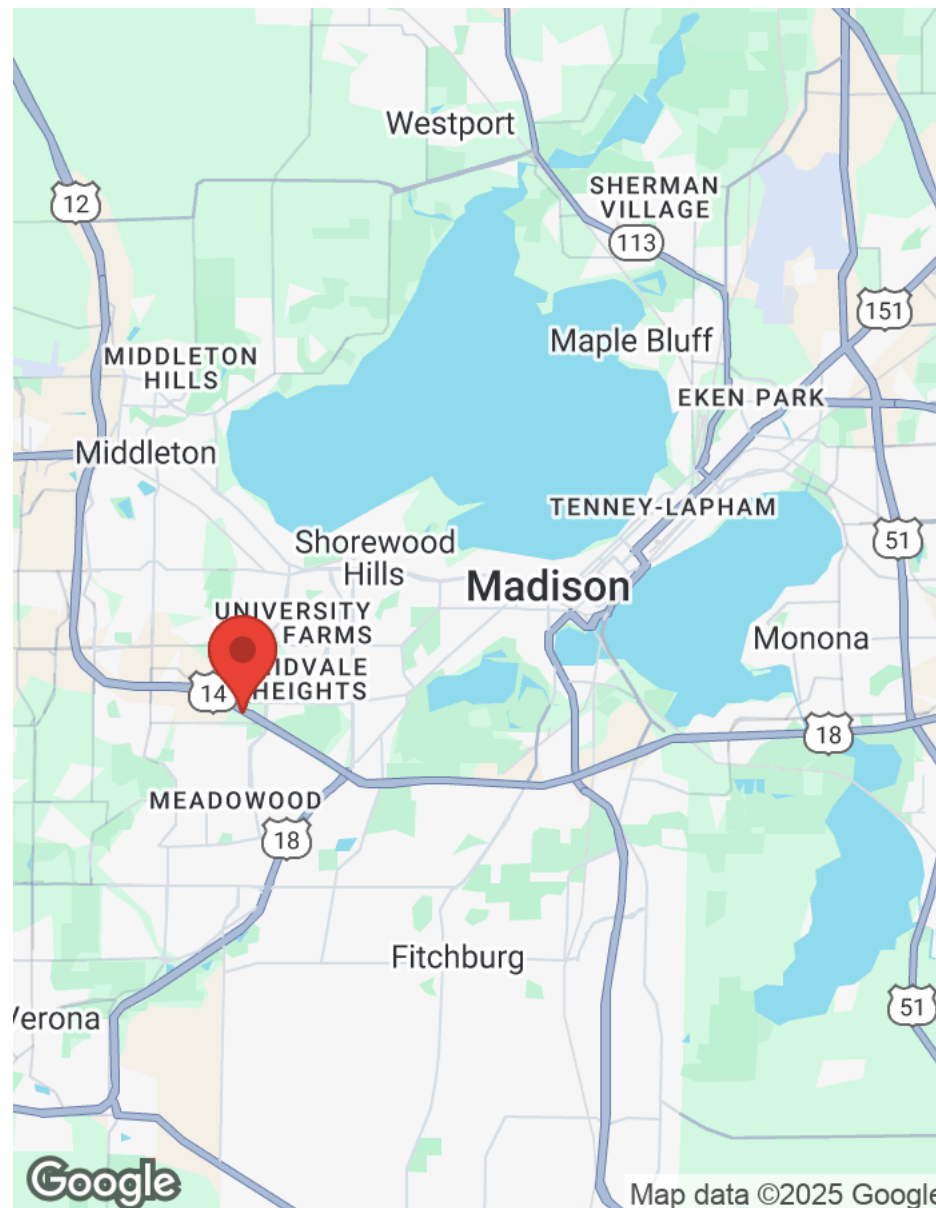
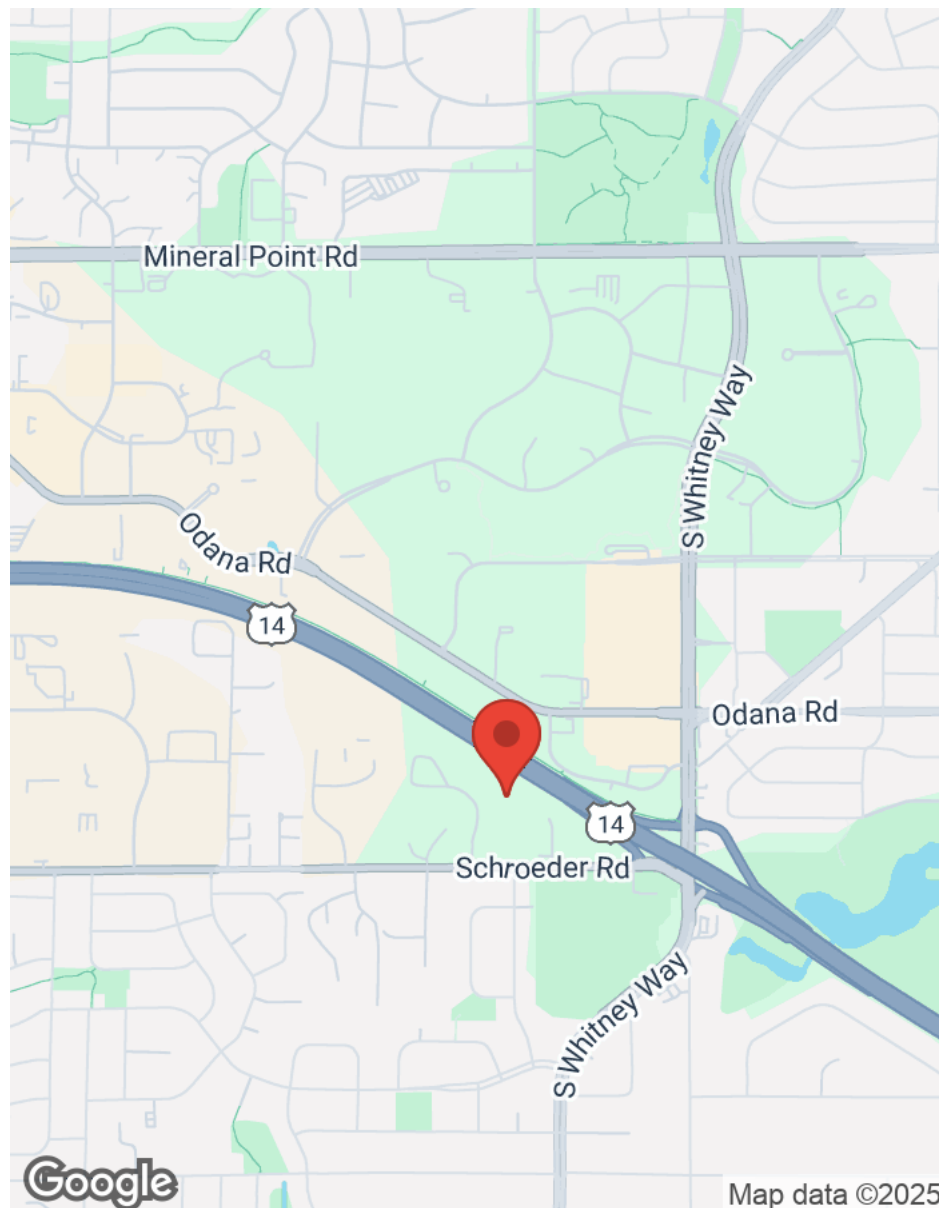
**BRYANT MEYER, CCIM**  
Broker, Associate  
O: (608) 443-1004  
C: (608) 633-2242  
bmeyer@oakbrookcorp.com

**SECOND FLOOR**  
**KESSEL CT - BLDG 25**  
NOT TO SCALE 08.12.16  
FIELD VERIFY ALL MEASUREMENTS



# LOCATION MAPS

25 KESSEL COURT | MADISON, WI 53711



**OAKBROOK CORPORATION**  
2 Science Court, Suite 200  
Madison, WI 53711

**TONY KEUNTJES**  
CRE Associate  
O: (608) 443-1039  
C: (715) 451-3252  
akeuntjes@oakbrookcorp.com

**BRYANT MEYER, CCIM**  
Broker, Associate  
O: (608) 443-1004  
C: (608) 633-2242  
bmeyer@oakbrookcorp.com



# AERIAL MAP

25 KESSEL COURT | MADISON, WI 53711



**OAKBROOK CORPORATION**  
2 Science Court, Suite 200  
Madison, WI 53711

**TONY KEUNTJES**  
CRE Associate  
O: (608) 443-1039  
C: (715) 451-3252  
akeuntjes@oakbrookcorp.com

**BRYANT MEYER, CCIM**  
Broker, Associate  
O: (608) 443-1004  
C: (608) 633-2242  
bmeyer@oakbrookcorp.com



# DISCLAIMER

25 KESSEL COURT

All materials and information received or derived from Oakbrook Corporation its directors, officers, agents, advisors, affiliates and/or any third party sources are provided without representation or warranty as to completeness, veracity, or accuracy, condition of the property, compliance or lack of compliance with applicable governmental requirements, developability or suitability, financial performance of the property, projected financial performance of the property for any party's intended use or any and all other matters.

Neither Oakbrook Corporation its directors, officers, agents, advisors, or affiliates makes any representation or warranty, express or implied, as to accuracy or completeness of the materials or information provided, derived, or received. Materials and information from any source, whether written or verbal, that may be furnished for review are not a substitute for a party's active conduct of its own due diligence to determine these and other matters of significance to such party. Oakbrook Corporation will not investigate or verify any such matters or conduct due diligence for a party unless otherwise agreed in writing.

EACH PARTY SHALL CONDUCT ITS OWN INDEPENDENT INVESTIGATION AND DUE DILIGENCE.

Any party contemplating or under contract or in escrow for a transaction is urged to verify all information and to conduct their own inspections and investigations including through appropriate third-party independent professionals selected by such party. All financial data should be verified by the party including by obtaining and reading applicable documents and reports and consulting appropriate independent professionals. Oakbrook Corporation makes no warranties and/or representations regarding the veracity, completeness, or relevance of any financial data or assumptions. Oakbrook Corporation does not serve as a financial advisor to any party regarding any proposed transaction.

All data and assumptions regarding financial performance, including that used for financial modeling purposes, may differ from actual data or performance. Any estimates of market rents and/or projected rents that may be provided to a party do not necessarily mean that rents can be established at or increased to that level. Parties must evaluate any applicable contractual and governmental limitations as well as market conditions, vacancy factors and other issues in order to determine rents from or for the property. Legal questions should be discussed by the party with an attorney. Tax questions should be discussed by the party with a certified public accountant or tax attorney. Title questions should be discussed by the party with a title officer or attorney. Questions regarding the condition of the property and whether the property complies with applicable governmental requirements should be discussed by the party with appropriate engineers, architects, contractors, other consultants, and governmental agencies. All properties and services are marketed by Oakbrook Corporation in compliance with all applicable fair housing and equal opportunity laws.

**OAKBROOK CORPORATION**  
2 Science Court, Suite 200  
Madison, WI 53711

*PRESENTED BY:*

**TONY KEUNTJES**  
CRE Associate  
O: (608) 443-1039  
C: (715) 451-3252  
akeuntjes@oakbrookcorp.com

**BRYANT MEYER, CCIM**  
Broker, Associate  
O: (608) 443-1004  
C: (608) 633-2242  
bmeyer@oakbrookcorp.com

The calculations and data presented are deemed to be accurate, but not guaranteed. They are intended for the purpose of illustrative projections and analysis. The information provided is not intended to replace or serve as substitute for any legal, accounting, investment, real estate, tax or other professional advice, consultation or service. The user of this software should consult with a professional in the respective legal, accounting, tax or other professional area before making any decisions.