

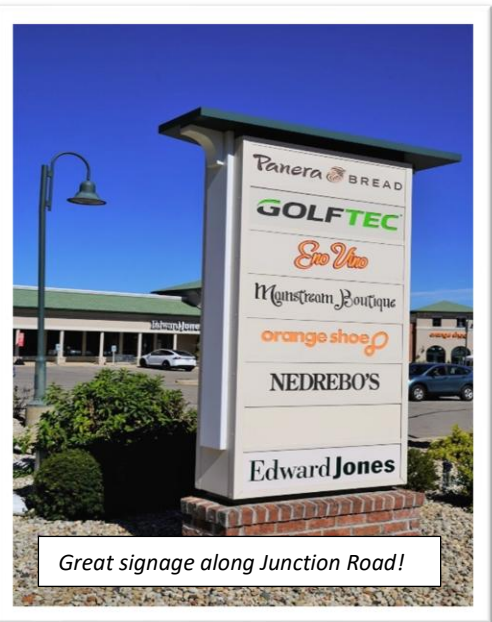
# Portofino Place

## Property Highlights:

- 605 Junction Road, a 2,630 square foot end-cap space, available now!
- *Portofino Place* is perfectly situated along Junction Road, between Old Sauk Road and Mineral Point Road, with easy access to the Beltline.
- Join premiere co-tenant names such as *Panera Bread*, *Golftec*, *Orange Shoe*, *Personal Fitness*, and *Eno Vino Wine Bar*, among others.

## Deal Points:

- Base Rent = \$20-\$23/SF (depending on Tenant Improvement needs)
- NNN = \$7.80



Great signage along Junction Road!



**Flad Development  
& Investment Corp.**

Brian Flad  
Direct: 608.443.4365  
[bflad@flad-development.com](mailto:bflad@flad-development.com)

Josh Romano  
Direct: 608.443.4366  
[jromano@flad-development.com](mailto:jromano@flad-development.com)