

AVAILABLE

AVAILABLE

## For Lease | Retail/Flex Space Viking Plaza

1200 Springdale Street  
Mount Horeb, WI 53572

### Contact us:

#### Dina Stetler

Real Estate Advisor

+1 608 577 0969

dina.stetler@colliers.com

#### Dustin Pate

Senior Real Estate Advisor

+1 608 867 7471

dustin.pate@colliers.com

#### Colliers | Wisconsin

316 W Washington Ave, Suite 925

Madison, WI 53703

+1 608 826 9500

# Property Overview

Viking Plaza | Mount Horeb, WI

Available Spaces 1,925 SF & 11,375 SF

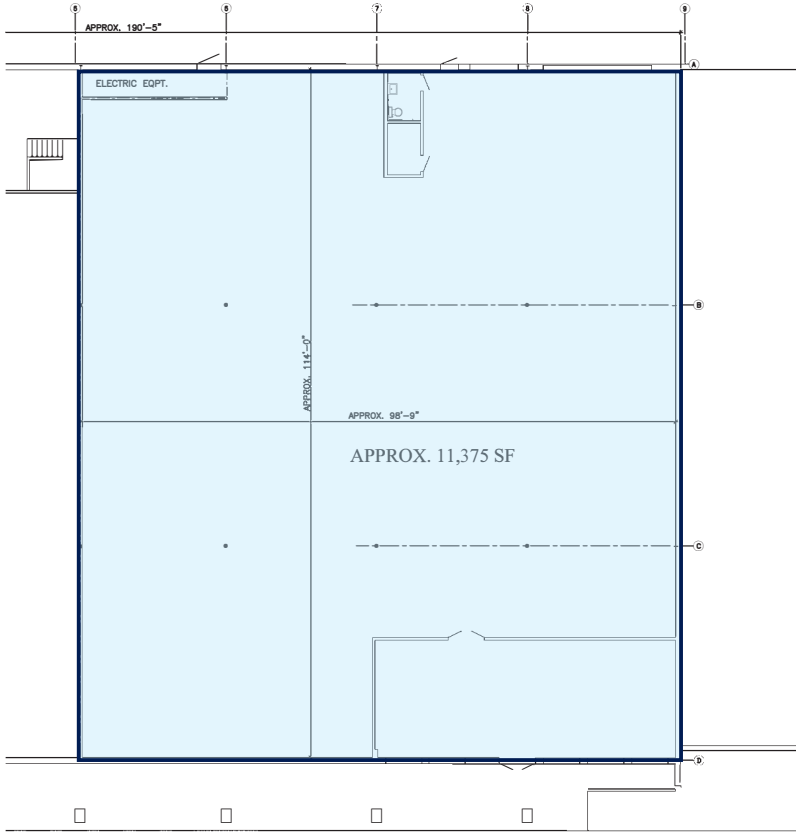
Year Built / Renovated 1970 / 2022-2024

CAM \$3.50 PSF

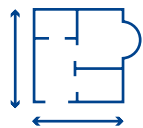
Lease Rate \$13.50 NNN

TI Allowance Contact Broker

- 2024 - New double sided monument sign.
- 2023 - Complete facade renovations.
- 2023 - Parking lot sealed and striped.
- 2022 - New roof and gutters on entire building.
- HVAC units in 1260 Springdale Street were replaced or reconditioned in 2022.



1260 Springdale St



1,925 SF -  
11,375 SF



Convenient Access  
to HWY 18/151



Surface Parking  
Available



Building & Monument  
Signage Available



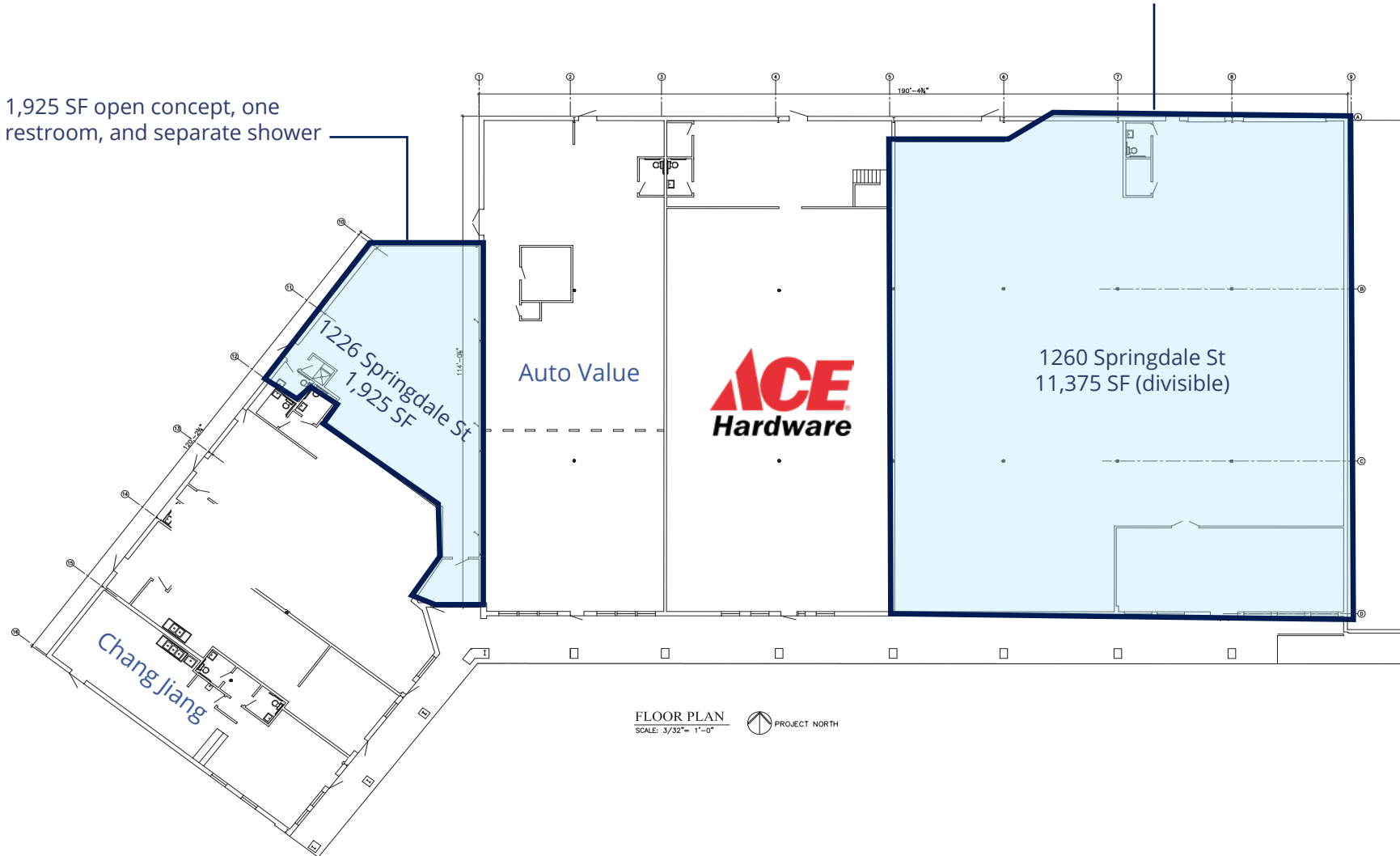
9,700 Vehicles  
Per Day

# Site Plan

Viking Plaza | Mount Horeb, WI

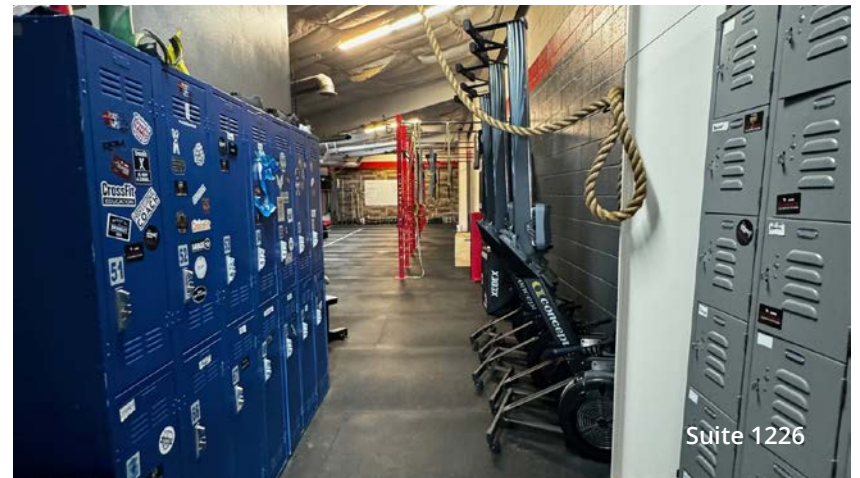
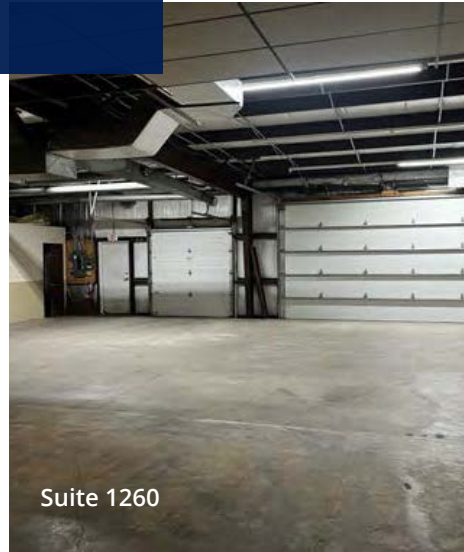
11,375 square feet divisible to a minimum of 4,000 square feet, one drive in door, one over head door, and two restrooms

1,925 SF open concept, one restroom, and separate shower



# Site Plan

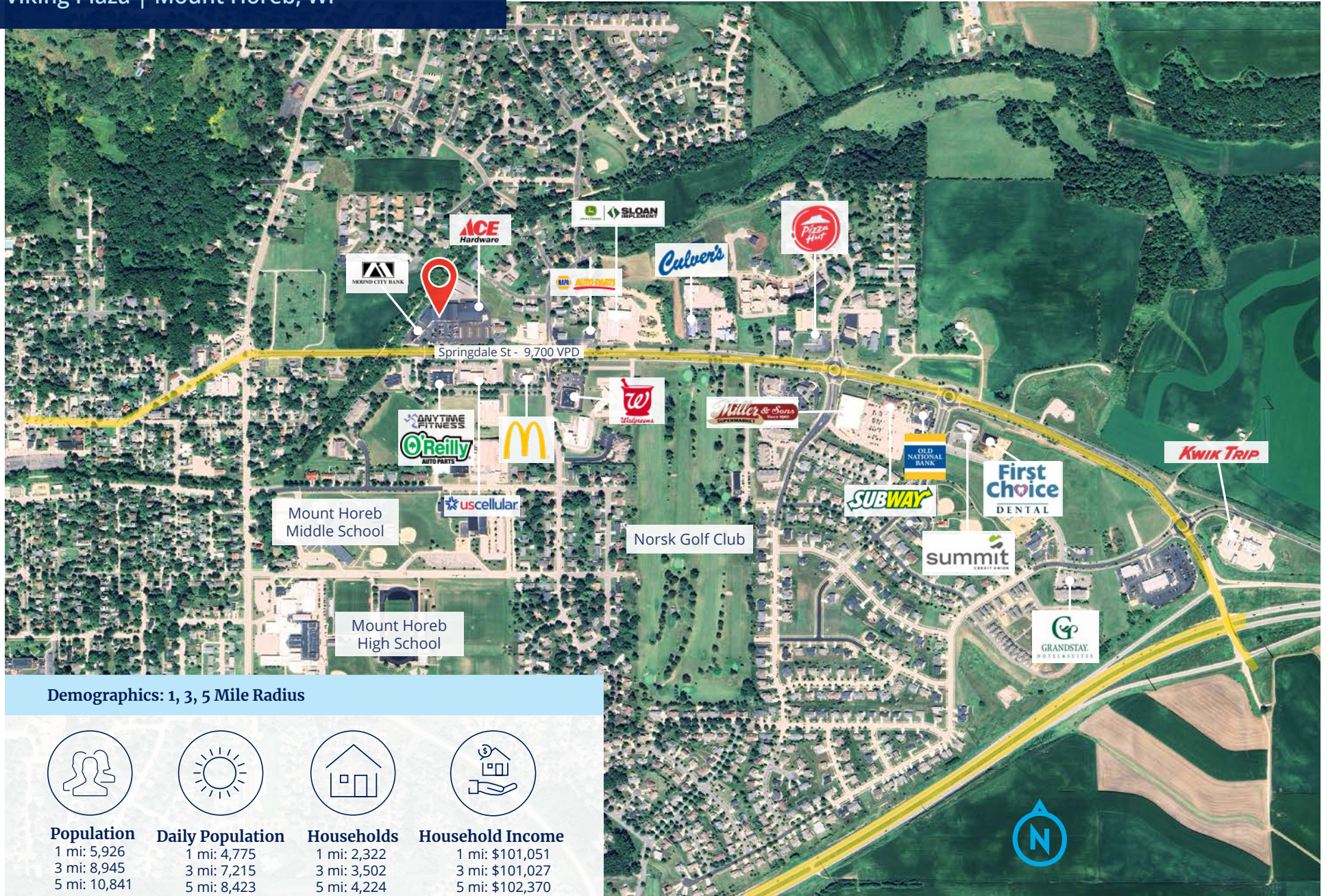
Viking Plaza | Mount Horeb, WI





# Property Location

Viking Plaza | Mount Horeb, WI





# Metro Madison

Madison is also home to the University of Wisconsin—Madison, the state's flagship university. The University of Wisconsin - Madison's main campus neighbors the Capitol building with its 50,000 student body. Within the campus sits Camp Randall Stadium, home to UW's football team. With a seating capacity of 80,321, Camp Randall ranks among the nation's largest school-owned stadiums.

The city is able to attract top-notch talent through a true live, work, play mantra. Downtown Madison is centered around the State Capitol building with the surrounding neighborhood home to upscale retailers, corporate offices, luxury apartments and condos, and some of the finest dining options in the state.

## The University of Wisconsin – Madison & Four Strong Technical Schools Help Fuel a Strong Workforce

| Notable Area Employers   |  |  |
|--|--|--|
| <br>13,000 Employees | <br>24,000 Employees | <br>21,000 Employees |
|                     |                     |                     |
|                     |                     |                     |
|                     |                     |                     |

# Viking Plaza

1200 Springdale Street  
Mount Horeb, WI 53572

## CONTACT US

### Dina Stetler

Real Estate Advisor  
+1 608 577 0969  
dina.stetler@colliers.com

### Dustin Pate

Senior Real Estate Advisor  
+1 608 867 7471  
dustin.pate@colliers.com

### Colliers | Wisconsin

316 W Washington Ave, Suite 925  
Madison WI 53703  
+1 608 826 9500



This document/email has been prepared by Colliers for advertising and general information only. Colliers makes no guarantees, representations or warranties of any kind, expressed or implied, regarding the information including, but not limited to, warranties of content, accuracy and reliability. Any interested party should undertake their own inquiries as to the accuracy of the information. Colliers excludes unequivocally all inferred or implied terms, conditions and warranties arising out of this document and excludes all liability for loss and damages arising there from. This publication is the copyrighted property of Colliers and /or its licensor(s). © 2025. All rights reserved. This communication is not intended to cause or induce breach of an existing listing agreement.



Prior to negotiating on your behalf the Brokerage firm, or an agent associated with the firm, must provide you the following disclosure statement:

## ***Broker Disclosure to Customers***

You are a customer of the brokerage firm (hereinafter Firm). The Firm is either an agent of another party in the transaction or a subagent of another firm that is the agent of another party in the transaction. The broker or a salesperson acting on behalf of the Firm may provide brokerage services to you. Whenever the Firm is providing brokerage services to you, the Firm and its brokers and salespersons (hereinafter Agents) owe you, the customer, the following duties:

- The duty to provide brokerage services to you fairly and honestly.
- The duty to exercise reasonable skill and care in providing brokerage services to you.
- The duty to provide you with accurate information about market conditions with a reasonable time if you request it, unless disclosure of the information is prohibited by law.
- The duty to disclose to you in writing certain Material Adverse Facts about a property, unless disclosure of the information is prohibited by law.
- The duty to protect your confidentiality. Unless the law requires it, the Firm and its Agents will not disclose your confidential information or the confidential information to other parties.
- The duty to safeguard trust funds and other property held by the Firm or its Agents.
- The duty, when negotiating, to present contract proposals in an objective and unbiased manner and disclose the advantages and disadvantages of the proposals.

Please review this information carefully. An Agent of the Firm can answer your questions about brokerage services, but if you need legal advice, tax advice or a professional home inspection contact an attorney, tax advisor, or home inspector. This disclosure is required by section 452.135 of the Wisconsin statutes and is for information only. It is a plain-language summary of the duties owed to a customer under section 452.133 (1) of the Wisconsin statutes.

## ***Confidentiality Notice to Customers***

The Firm and its Agents will keep confidential any information given to the Firm and its Agents in confidence, or any information obtained by the Firm and its Agents that a reasonable person would want to be kept confidential, unless the information must be disclosed by law or you authorize the Firm to disclose particular information. The Firm and its Agents shall continue to keep the information confidential after the Firm is no longer providing brokerage services to you.

The following information is required to be disclosed by law:

1. Material Adverse Facts, as defined in section 452.01 (5g) of the Wisconsin Statutes.
2. Any facts known by the Firm or its Agents that contradict any information included in a written inspection report on the property or real estate that is the subject of the transaction.

To ensure that the Firm and its Agents are aware of what specific information you consider confidential, you may list that information below, or provide that information to the Firm and its Agents by other means. At a later time, you may also provide the Firm and its Agents with other information you consider to be confidential.

Confidential information: \_\_\_\_\_

Non-Confidential information: (The following information may be disclosed by the Firm and its Agents): \_\_\_\_\_

(Insert information you authorize to be disclosed, such as financial qualification information.)

## ***Definition of Material Adverse Facts***

A "Material Adverse Fact" is defined in Wis. Stat 452.01 (5g) as an Adverse Fact that a party indicates is of such significance, or that is generally recognized by a competent licensee as being of such significance to a reasonable party, that it affects or would affect the party's decision to enter into a contract or agreement concerning a transaction or affects or would affect the party's decision about the terms of such a contract or agreement.

An "Adverse" fact is defined in Wis. Stat. 452.01 (1e) as a condition or occurrence that a competent licensee generally recognizes will significantly and adversely affect the value of the property, significantly reduce the structural integrity of improvements to real estate, or present a significant health risk to occupants of the property; or information that indicates that a party to a transaction is not able to or does not intend to meet his or her obligations under a contract or agreement made concerning the transaction.

## ***Sex Offender Registry***

Notice: You may obtain information about the sex offender registry and persons registered with the registry by contacting the Wisconsin Department of Corrections on the Internet at <http://offender.doc.state.wi.us/public/>