

For Lease

Contact us:

**Colin McLandsborough**

Real Estate Advisor

+1 262 309 5597

colin.mclandsborough@colliers.com

**Chris Richards**

Partner

+1 608 628 5895

chris.richards@colliers.com

Colliers | Wisconsin

316 W. Washington Ave | Suite 925

Madison, WI 53703

P: +1 608 826 9500

F: +1 414 276 9501

# 1 Point Place Madison, WI 53719

## Office Space at High Point Office Park

Available Space	1,263 SF - 5,113 SF
Building Size	29,000 SF
Year Built	1994
Lease Terms	Negotiable
Utilities	Tenant pays phone/data & in-suite janitorial
Lease Rate	\$17.50 Modified Gross



# Available Space

1 Point Place | High Point Office Park | For Lease

## Property Highlights:

- Outstanding beltline visibility
- Many nearby retailers and dining options
- On-site management
- Signage opportunities
- Substantial surface parking
- Generous tenant improvement allowance
- Fitness center on-site
- Shared conference rooms
- Additional storage space

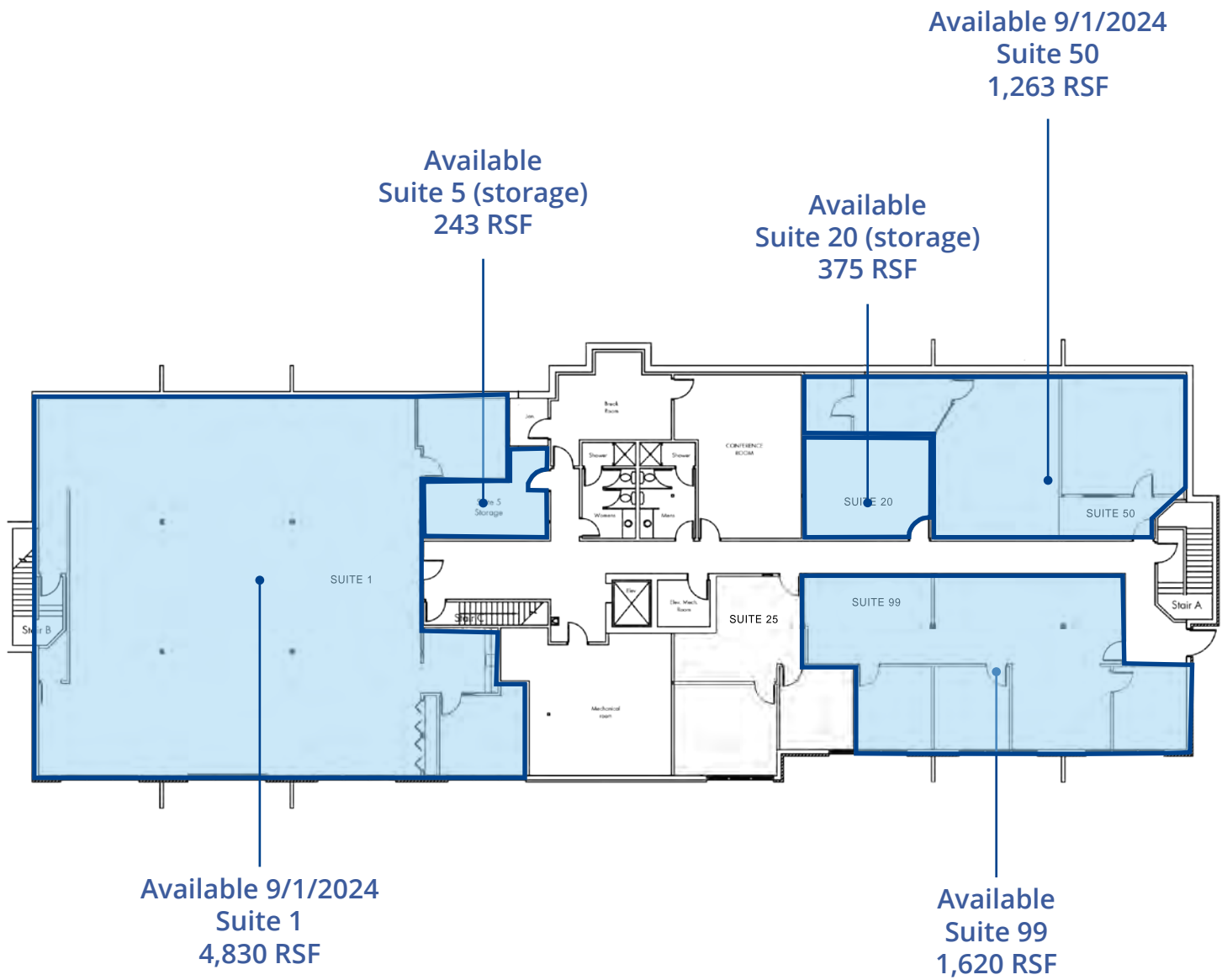
## Available Space:

Suite 1	4,830 RSF
Suite 50	1,263 RSF
Suite 100	3,331 RSF
Suite 101	2,477 RSF Available 10/01/2025
Suite 102	2,530 RSF
Suite 104	1,766 RSF
Suite 200	5,113 RSF Available 07/01/25
Suite 201	2,319 RSF
Suite 202	1,482 RSF
Suite 203	2,007 RSF
Suite 5	243 RSF (storage)
Suite 20	375 RSF (storage)
Suite 99	1,620 RSF



# Floor Plans - *Lower Level*

1 Point Place | High Point Office Park | For Lease



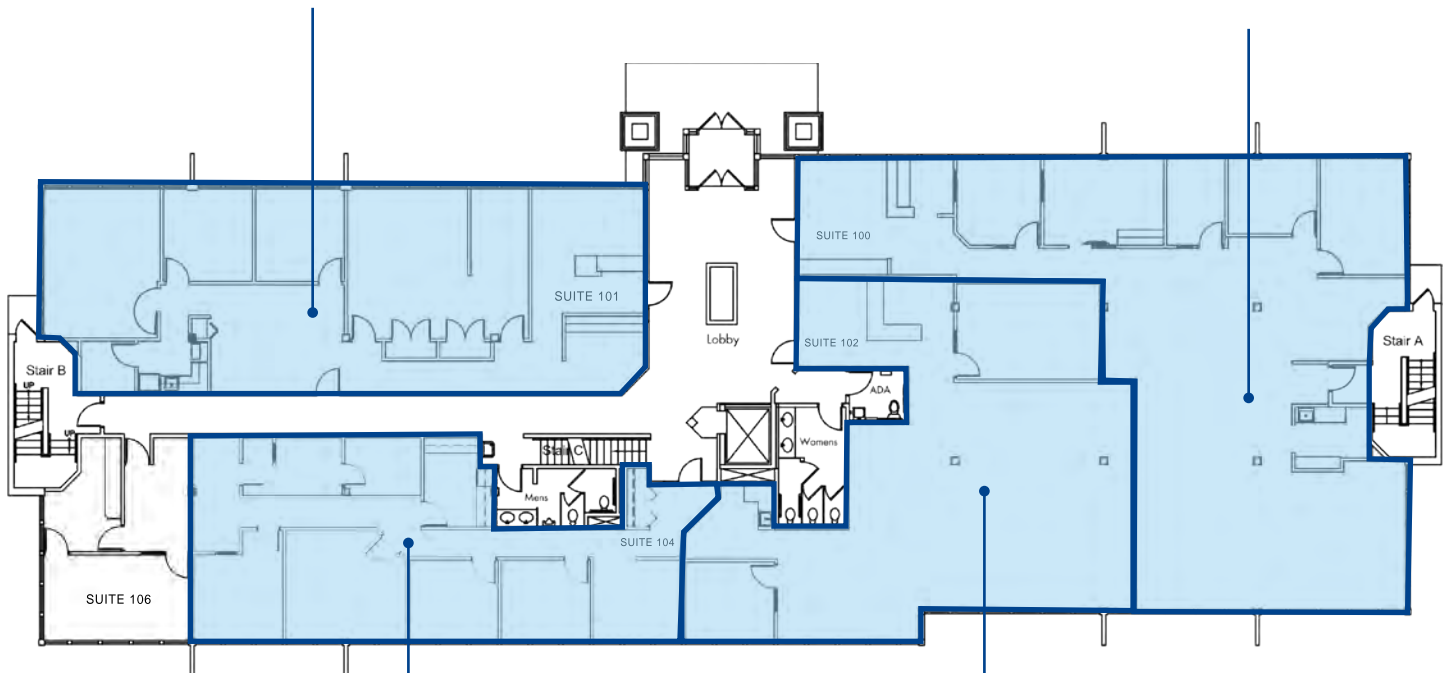


# Floor Plans - *First Floor*

1 Point Place | High Point Office Park | For Lease

Available 10/01/25  
Suite 101  
2,477 RSF

Available  
Suite 100  
3,331 RSF



Available  
Suite 104  
1,766 RSF

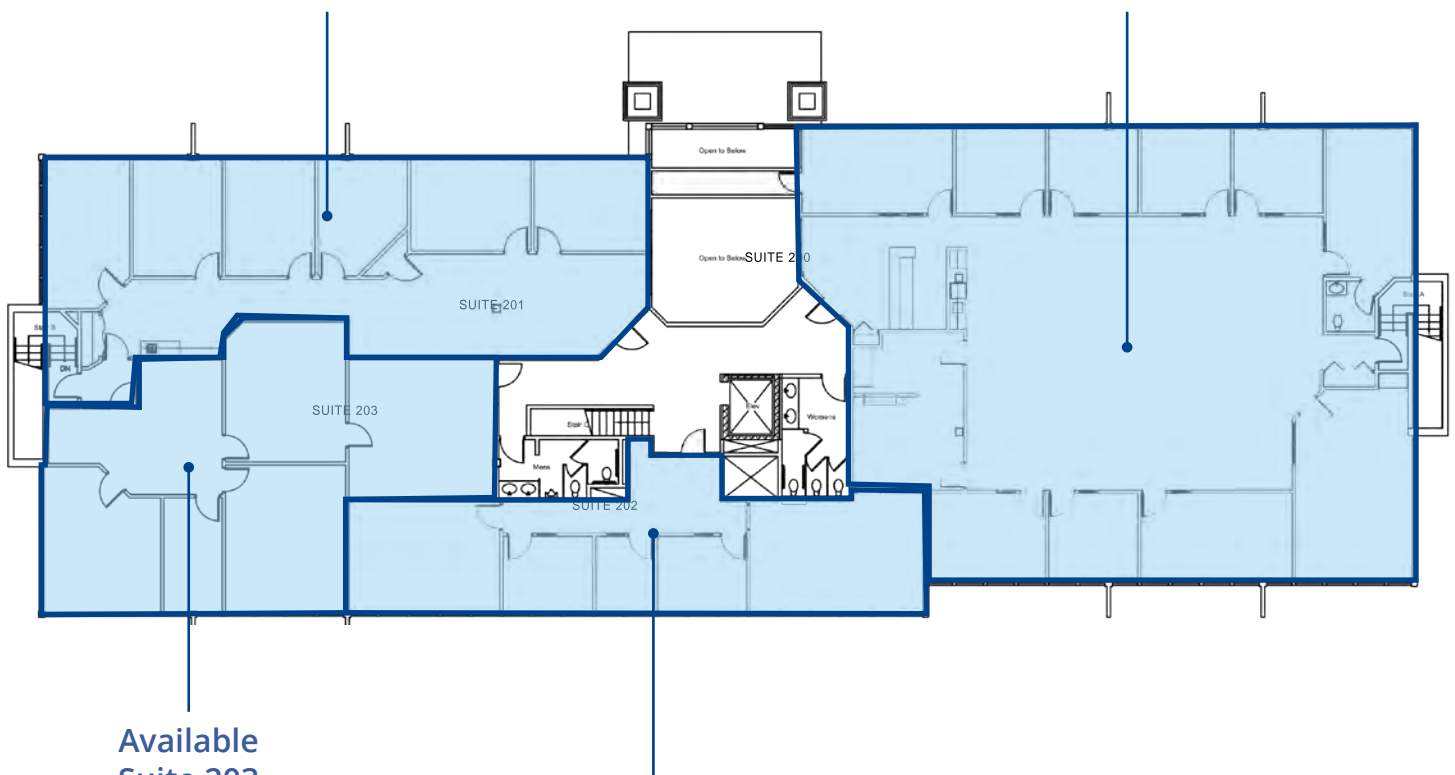
Available  
Suite 102  
2,530 RSF

# Floor Plans - *Second Floor*

1 Point Place | High Point Office Park | For Lease

Available  
Suite 201  
2,319 RSF

Available 07/01/25  
Suite 200  
5,113 RSF



Available  
Suite 203  
2,007 RSF

Available  
Suite 202  
1,482 RSF

# Property Photos

1 Point Place | High Point Office Park | For Lease





# Property Photos

1 Point Place | High Point Office Park | For Lease





# Park Overview

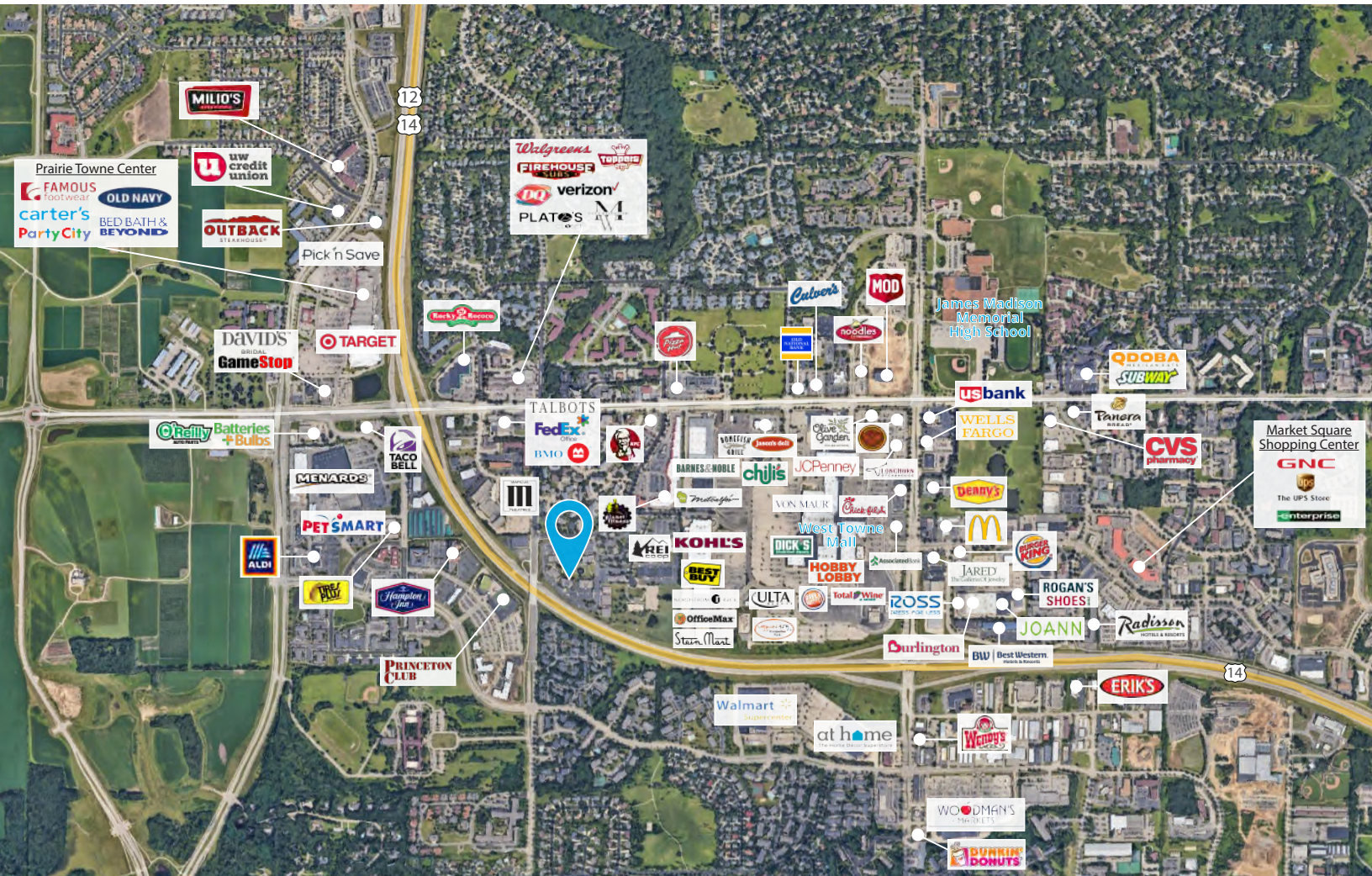
1 Point Place | High Point Office Park | For Lease





# Property Location

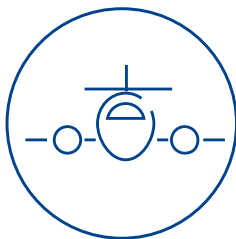
1 Point Place | High Point Office Park | For Lease



## Drive Times



**Beltline Access**  
0.7 Miles  
2 Minutes



**Dane County  
Regional Airport**  
16.2 Miles  
25 Minutes



**Milwaukee, WI**  
89.1 Miles  
1.5 Hours

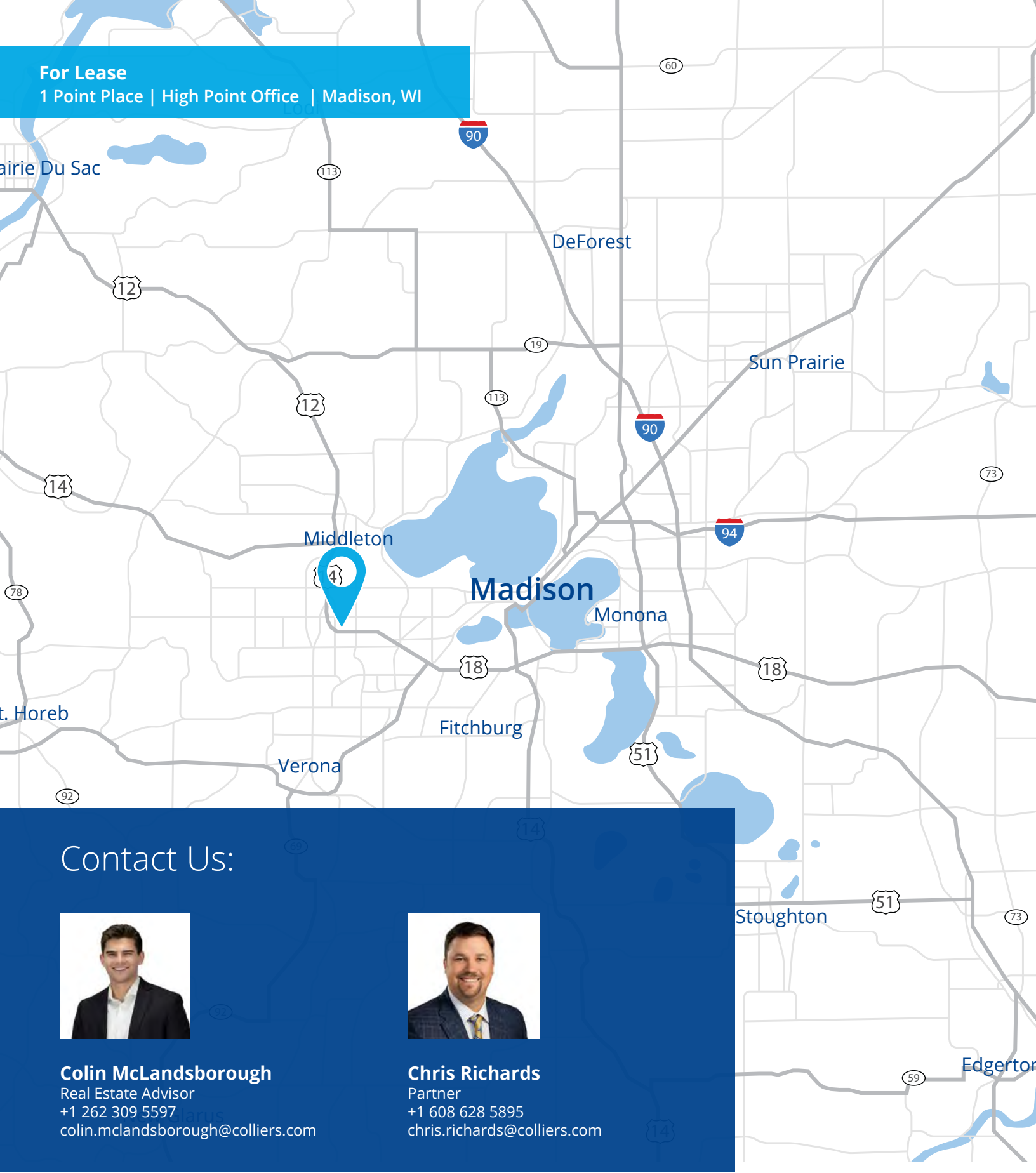


**I-90/94 Access**  
17 Miles  
20 Minutes



**For Lease**

**1 Point Place | High Point Office | Madison, WI**



## Contact Us:



### **Colin McLandsborough**

Real Estate Advisor

+1 262 309 5597

[colin.mclandsborough@colliers.com](mailto:colin.mclandsborough@colliers.com)



### **Chris Richards**

Partner

+1 608 628 5895

[chris.richards@colliers.com](mailto:chris.richards@colliers.com)



Colliers | Wisconsin  
316 W. Washington Ave | Suite 925  
Madison, WI 53703  
P: +1 608 826 9500  
F: +1 414 276 9501

This document has been prepared by Colliers International for advertising and general information only. Colliers International makes no guarantees, representations or warranties of any kind, expressed or implied, regarding the information including, but not limited to, warranties of content, accuracy and reliability. Any interested party should undertake their own inquiries as to the accuracy of the information. Colliers International excludes unequivocally all inferred or implied terms, conditions and warranties arising out of this document and excludes all liability for loss and damages arising therefrom. This publication is the copyrighted property of Colliers International and/or its licensor(s). ©2023. All rights reserved.



# State Of Wisconsin | Broker Disclosure

## Non-Residential Customers

Wisconsin law requires all real estate licensees to give the following information about brokerage services to prospective customers.

Prior to negotiating on your behalf the Brokerage firm, or an agent associated with the firm, must provide you the following disclosure statement:

### **Broker Disclosure to Customers**

You are a customer of the broker. The broker is either an agent of another party in the transaction or a subagent of another broker who is the agent of another party in the transaction. The broker, or a salesperson acting on behalf of the broker, may provide brokerage services to you, the broker owes you, the customer, the following duties:

- The duty to provide brokerage services to you fairly and honestly.
- The duty to exercise reasonable skill and care in providing brokerage services to you.
  - The duty to provide you with accurate information about market conditions with a reasonable time if you request it, unless prohibited by law.
- The duty to protect your confidentiality. Unless the law requires it, the broker will not disclose your confidential information or the confidential information to other parties.
- The duty to safeguard trust funds and other property the broker holds.
- The duty, when negotiating, to present contract proposals in an objective and unbiased manner and disclose the advantages and disadvantages of the proposals.

Please review this information carefully. A broker or salesperson can answer your questions about brokerage services, but if you need legal advice, tax advice or a professional home inspection contact an attorney, tax advisor, or home inspector. This disclosure is required by section 452.135 of the Wisconsin statutes and is for information only. It is a plain-language summary of a broker's duties to a customer under section 452.133 (1) of the Wisconsin statutes.

### **Confidentiality Notice to Customers**

Broker will keep confidential any information given to broker in confidence, or any information obtained by broker that he or she knows a reasonable person would want to be kept confidential. Unless the information must be disclosed by law or you authorize the broker to disclose particular information. A broker shall continue to keep the information confidential after broker is no longer providing brokerage services to you.

The following information is required to be disclosed by law:

1. Material adverse facts, as defined in section 452.01 (5g) of the Wisconsin Statutes.
2. Any facts known by the broker that contradict any information included in a written inspection report on the property or real estate that is the subject of the transaction.

*No representation is made as to the legal validity of any provision or the adequacy of any provision in any specific transaction.*

Copyright 2007 by Wisconsin REALTORS Association.  
Drafted by Attorney Debra Peterson Conrad.

To ensure that the broker is aware of what specific information you consider confidential, you may list that information below. At a later time, you may also provide the broker with other information you consider to be confidential.

Confidential information: \_\_\_\_\_

Non-Confidential information: (The following information may be disclosed by Broker): \_\_\_\_\_

(Insert information you authorize the broker to disclose such as financial qualification information.)

### **Consent to Telephone Solicitation**

I/We agree that the broker and any affiliated settlement service providers (for example, a mortgage company or title company) may call our/my home or cell phone numbers regarding issues, goods and services related to the real estate transaction until I/we withdraw this consent in writing.

List Home/Cell Numbers: \_\_\_\_\_

### **Sex Offender Registry**

Notice: You may obtain information about the sex offender registry and persons registered with the registry by contacting the Wisconsin Department of Corrections on the Internet at <http://offender.doc.state.wi.us/public/>

### **Definition of Material Adverse Facts**

A "material adverse fact" is defined in Wis. Stat 452.01 (5g) as an adverse fact that a party indicates is of such significance, or that is generally recognized by a competent licensee as being of such significance to a reasonable party, that it affects or would affect the party's decision to enter into a contract or agreement concerning a transaction or affects or would affect the party's decision to enter into a contract or agreement concerning a transaction or affects or would affect the party's decision about the terms of such a contract or agreement. An "adverse" fact is defined in Wis. Stat. 452.01 (1e) as a condition or occurrence that a competent licensee generally recognizes will significantly and adversely affect the value of the property, significantly reduce the structural integrity of improvements to real estate, or present a significant health risk to occupants of the property; or information that indicates that a party to a transaction is not able to or does not intend to meet his or her obligations under a contract or agreement made concerning the transaction.

