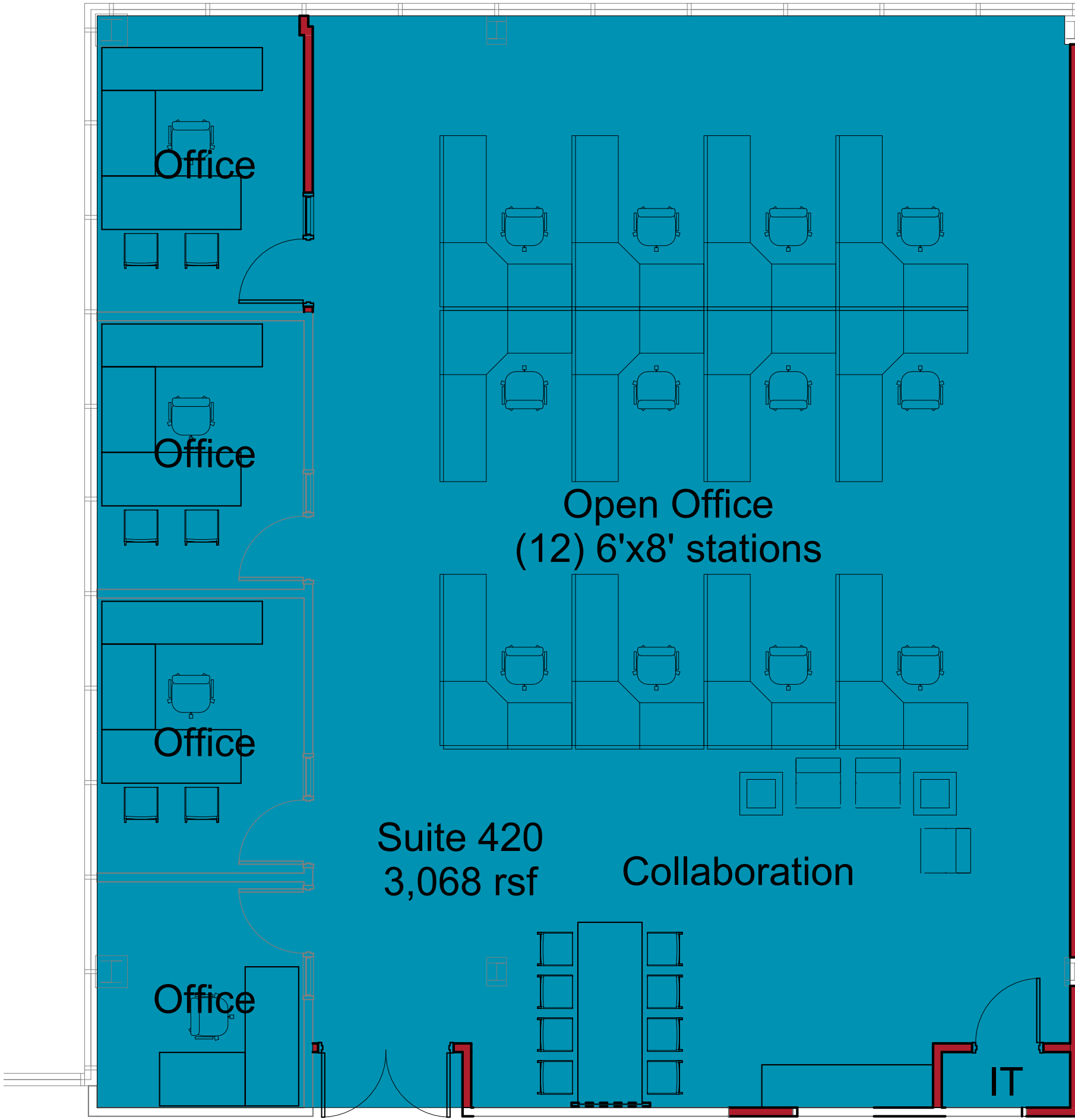
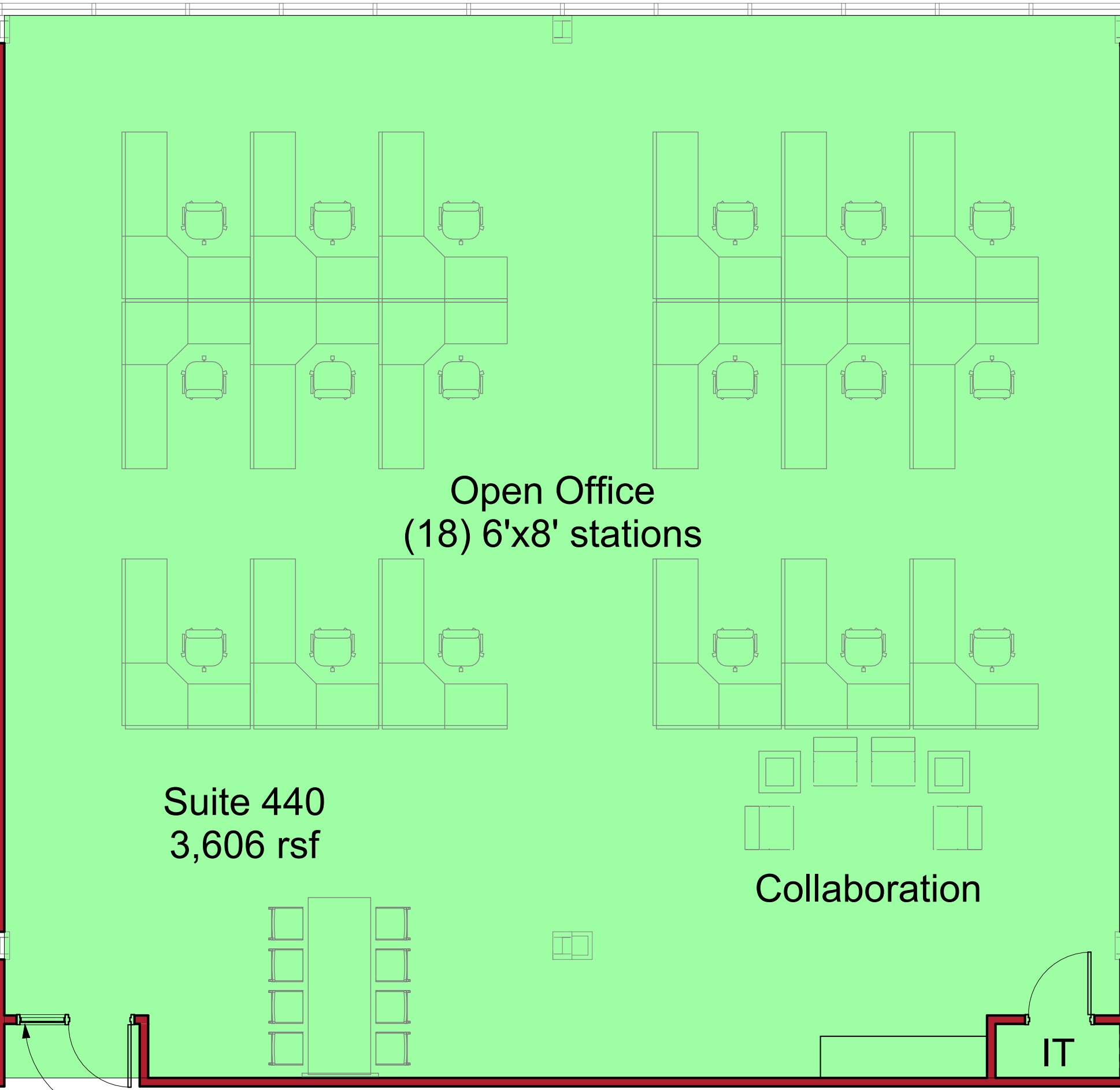


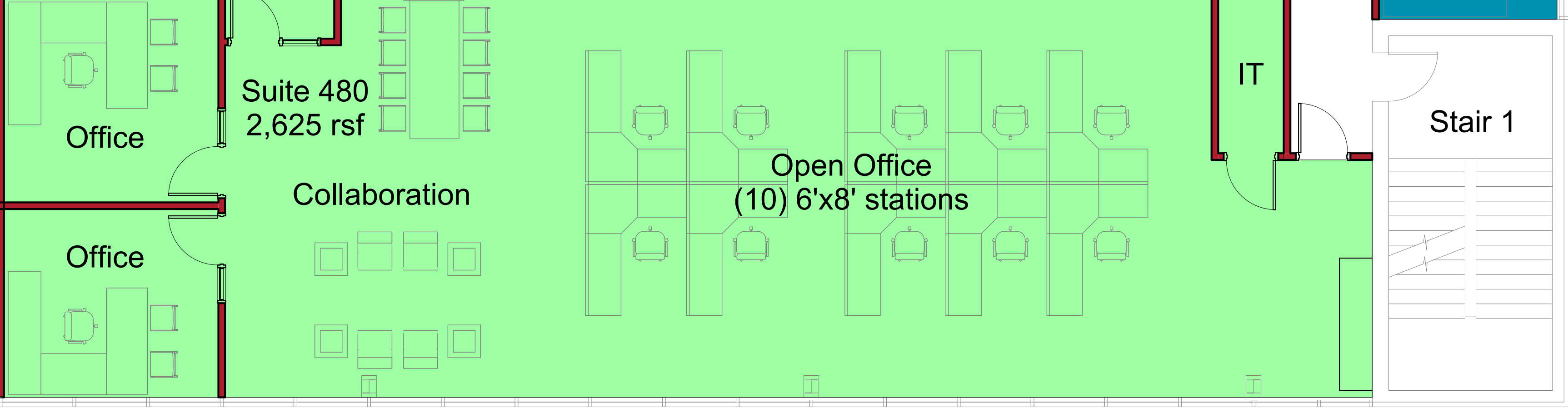
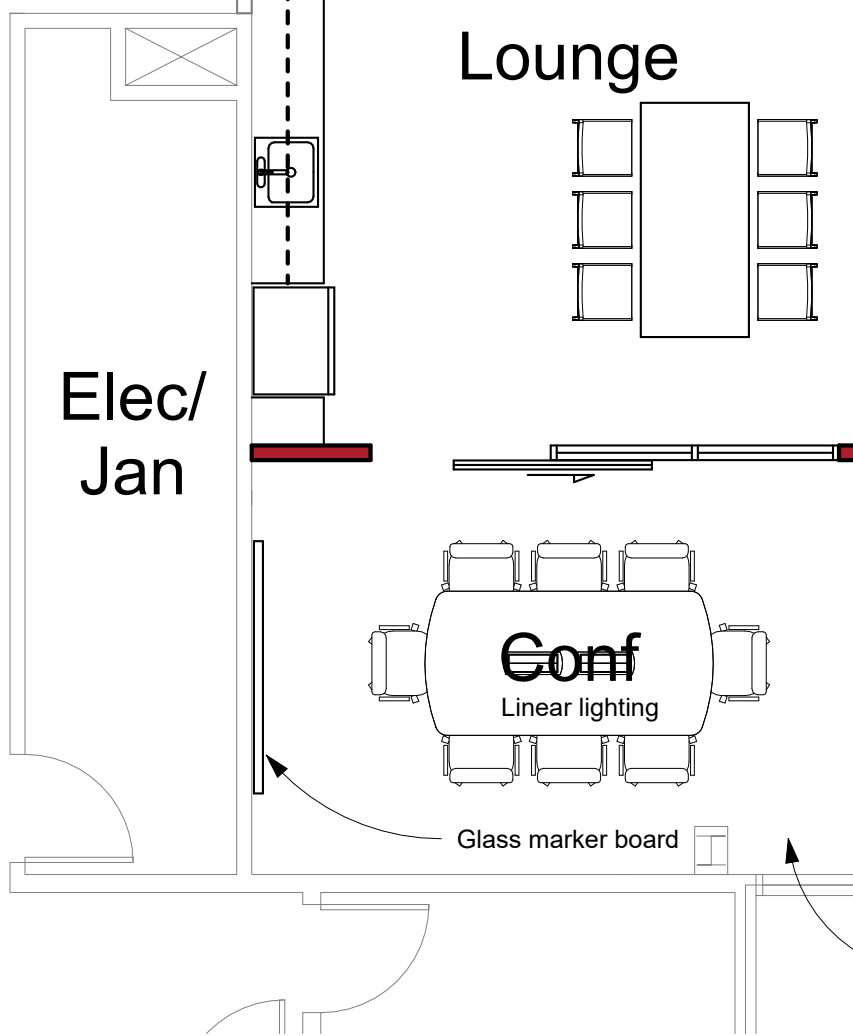
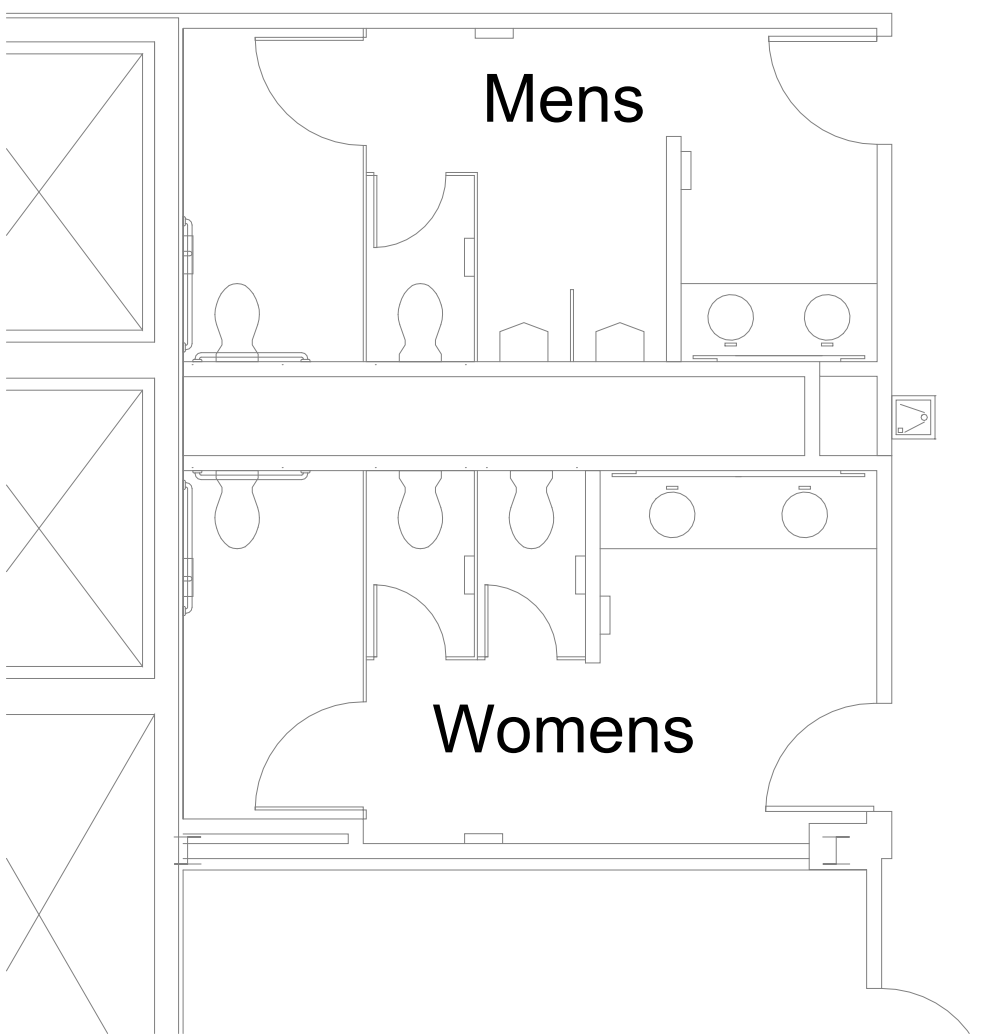
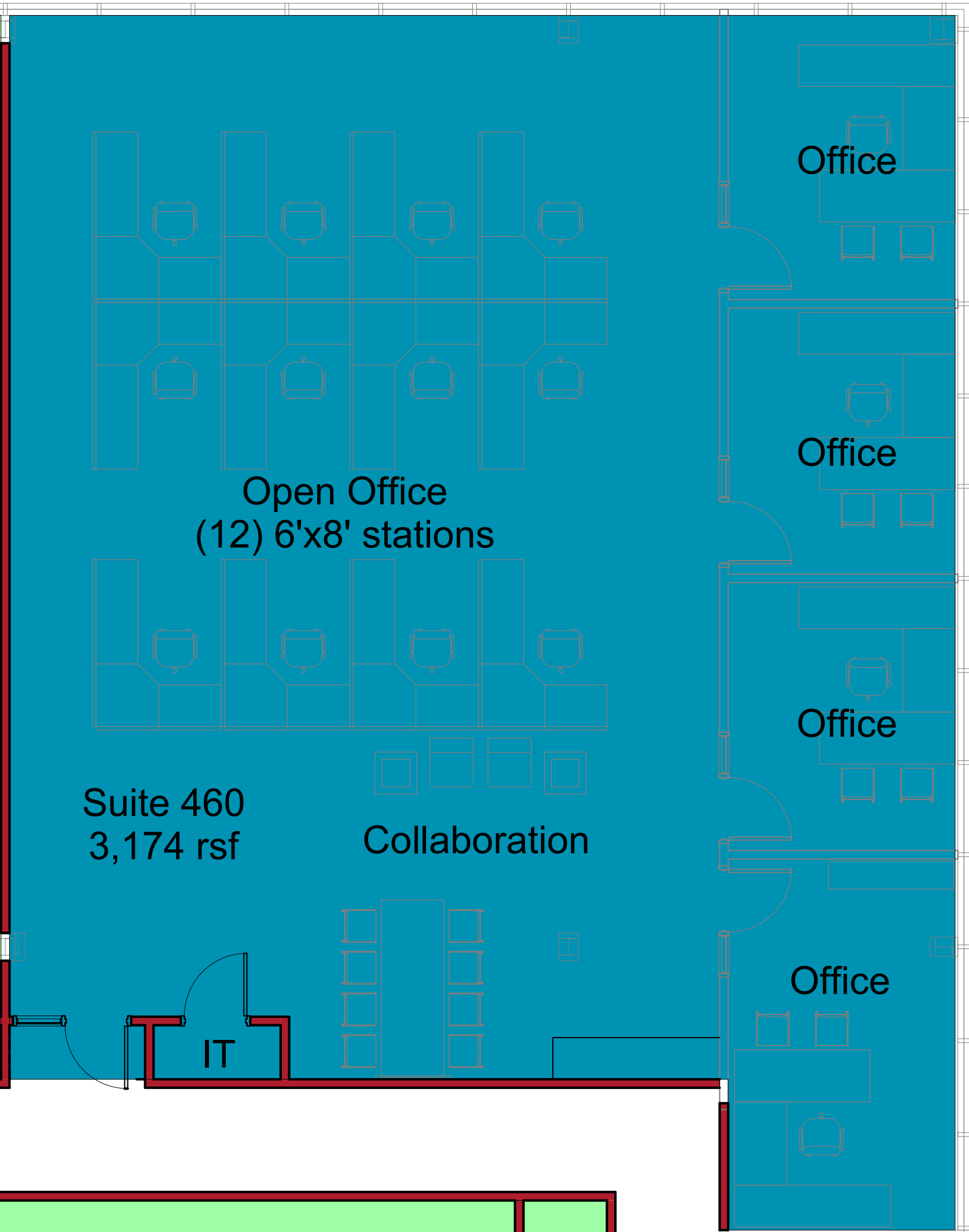
Suite 420 - furniture installed



Suite 440 - example furniture shown



Suite 460 - example furniture shown



P.O. Box 7700
Madison, WI 53707-7700
608-830-6337
www.artisreit.com

Concept plans

Not for construction

Approvals

Key
Existing
New Construction / Walls

Disclaimer: File and drawing may be inaccurate. All dimension, layout and conditions have not been field verified. Square footage may be inaccurate. Not suitable for bidding or construction. Plan may be adjusted by Architect of record to meet any applicable codes or regulations. Example furniture shown.

Revisions

Rev	Date	Description
-----	------	-------------

1 CONCEPT PLAN
3/16" = 1'-0"



2 FLOOR PLAN
3/64" = 1'-0"



SUITE ENTRY DOOR/GLASS SYSTEM EXAMPLE



CABINET, COUNTERTOP, SHELF AND BACKPLASH EXAMPLE



BREAK ISLAND EXAMPLE, CARPET EXAMPLE FOR SUITES

Client
Spec Suites

Project Address
1350 Deming Way
Middleton, WI

Project Name
Spec Suites

Date
4/8/25

Sheet Title
Marketing Plan

Sheet Number
A200