

For Sublease

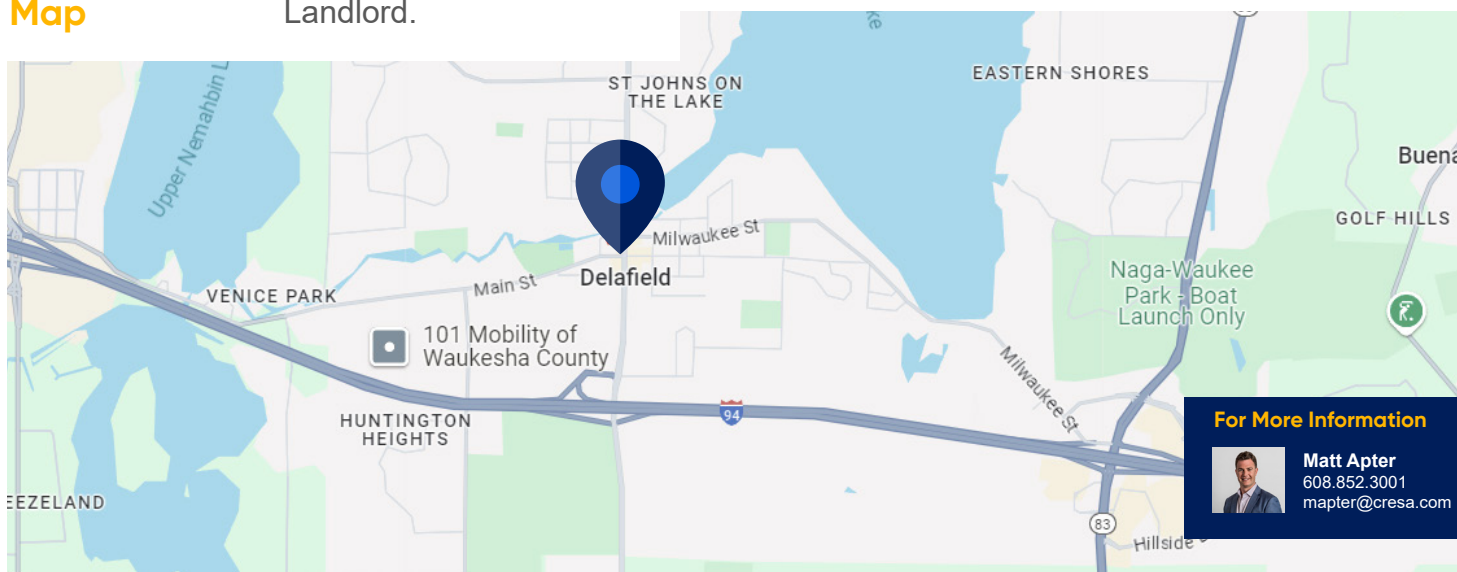
524 Milwaukee Street Suite 3D

Delafield, WI 53018

Space Profile

Available Space	Suite 3D
Size	1,757SF
Year Built	2001
Rate	\$15.50/RSF, NNN
Sublease Term	Current lease expires October 31, 2025. Longer term possible via a direct Lease with Landlord.

Map



Features

- The Town Center, designed as a charming collection of traditional Colonial buildings, is situated just north of I-94 in downtown Delafield.
- This pedestrian-friendly “Walking Town” features attractive, natural-sided buildings arranged closely together, with green spaces and walkways providing separation.
- The Town Center is within easy walking distance of the city’s restaurants, banks, and specialty shops.

For More Information

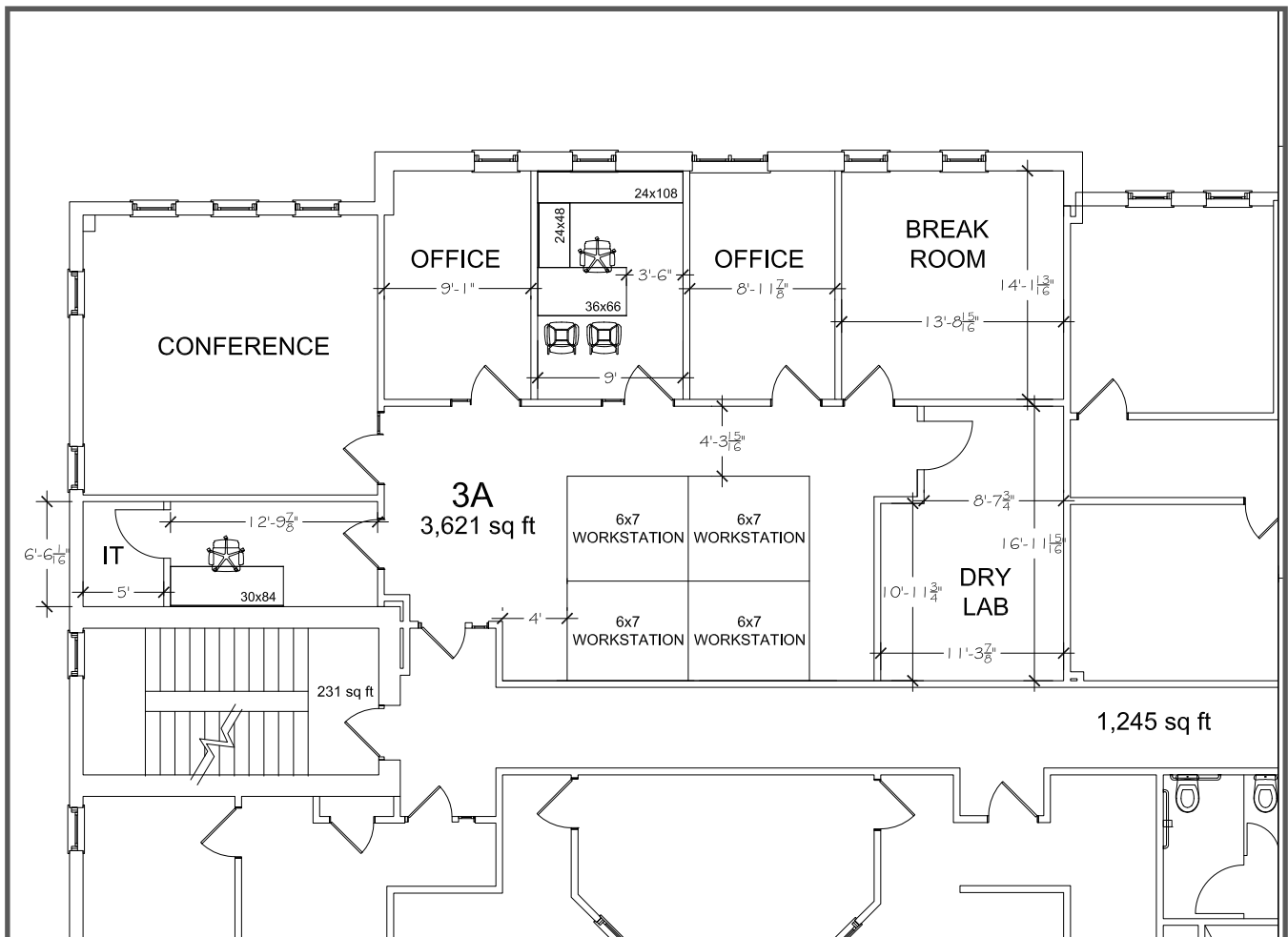


Matt Apter
608.852.3001
mapter@cresa.com

Even though obtained from sources deemed reliable, no warranty or representation, express or implied, is made as to the accuracy of the information herein, and it is subject to errors, omissions, change of price, rental or other conditions, withdrawal without notice, and to any special listing conditions imposed by our principals.

cresa

Floorplan - Suite 3D



For More Information

Cresa
613 Williamson Street
Suite 210
Madison, WI 53703
cresa.com/madison



Matt A[ter
608.852.3001
mapter@cresa.com



**524 Milwaukee Street,
Suite 3D**
Delafield, WI 53018



Cresa © 2019. All rights reserved. The information contained in this document has been obtained from sources believed reliable. While Cresa does not doubt its accuracy, Cresa has not verified it and makes no guarantee, warranty, or representation about it. It is your responsibility to independently confirm its accuracy and completeness. Any projections, opinions, assumptions or estimates used are for example only and do not represent the current or future performance of the property. The value of this transaction to you depends on tax and other factors which should be evaluated by your tax, financial and legal advisors. You and your advisors should conduct a careful, independent investigation of the property to determine to your satisfaction the suitability of the property for your needs.