

FOR SALE or LEASE

5417 Clem's Way
Stevens Point, WI 54482



FOR SALE or LEASE

**5417 Clem's Way
Stevens Point, WI 54482**



Property Information

Address: 5417 Clem's Way, Stevens Point, WI 54482
Date Available: October 1, 2025
Building Square Feet: 16,380 Square Feet
Site Size: 3.478 Acres (151,521 Sq Ft)

Sale Terms

Sale Price: \$2,675,000
Tax Parcel ID: 281-23-0802100017
Lot: CSM 10150-45-30 (Lot 1)
Real Estate Taxes: \$46,608 (2024)

Lease Terms

Net Base Rent: \$13.95 per square foot leased
Operating Expenses: Triple-Net (NNN) lease with Tenant responsible for all operating expenses including real estate taxes, building insurance, and maintenance.
Utilities: Tenant responsible for utilities.

For More Information Please Contact:

RuedeBusch Commercial Investments
4605 Dovetail Drive
Madison, WI 53704
www.ruedeBusch.com/brokerage

Thomas G. Phillips, CCIM, SIOR
Phone: 608.243.9070
Mobile: 608.770.4950
E-mail: tomp@ruedeBusch.com

FOR SALE or LEASE

5417 Clem's Way
Stevens Point, WI 54482



Property Profile

LOCATION & LOGISTICS

Address	5417 Clem's Way, Stevens Point, WI 54482
Nearest Highway	Interstate 39: 1 Mile (3 minutes)
Nearest Airport	Central Wisconsin Airport (CWA): 24 Miles (24 minutes)

BUILDING FEATURES

Year Built	2012
Description	Single-story office building with a mix of open office space, private offices, conference rooms, storage rooms, reception, kitchen, restrooms, and shower.
LEED Certification	LEED Silver
Foundation	4" slab on grade, poured concrete
Walls	Precast concrete panels
Roof	26 gauge standing seam roof
HVAC	Variable Refrigerant Flow (VRF) system
Fire Suppression	Wet system
Parking	63 stalls
Zoning	M2 (Heavy Industrial)
Expansion Potential	Site is large enough to accommodate expansion of the building and parking lot to the east.

MECHANICALS / UTILITIES

Gas	Provider: Wisconsin Public Service Corporation
Electric	Provider: Wisconsin Public Service Corporation
Water	Provider: Stevens Point Water Department



**For More Information
Please Contact:**

RuedeBusch Commercial Investments
4605 Dovetail Drive
Madison, WI 53704
www.ruedeBusch.com/brokerage

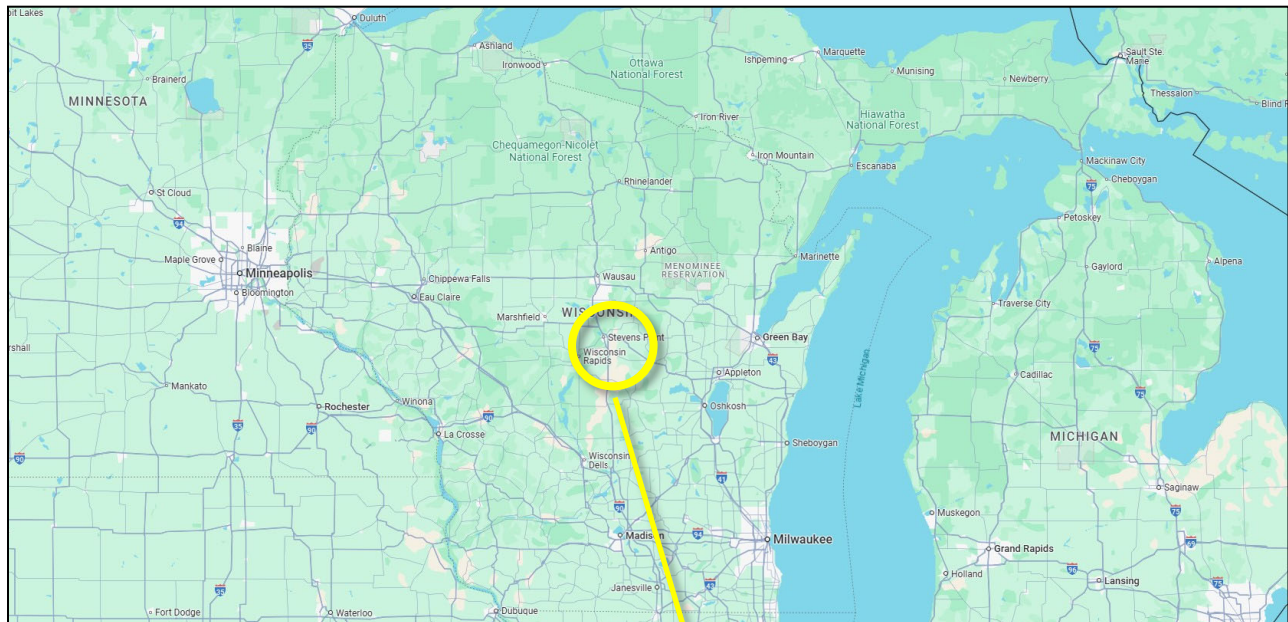
Thomas G. Phillips, CCIM, SIOR
Phone: 608.243.9070
Mobile: 608.770.4950
E-mail: tomp@ruedeBusch.com

FOR SALE or LEASE

5417 Clem's Way
Stevens Point, WI 54482



Location Maps



Destination	Distance	Approx. Travel Time
Wausau	39 Miles	37 min
Appleton	68 Miles	1 hr 10 min
Madison	108 Miles	1 hr 55 min
Minneapolis	220 Miles	3 hr 15 min

**For More Information
Please Contact:**

RuedeBusch Commercial Investments
4605 Dovetail Drive
Madison, WI 53704
www.ruedeBusch.com/brokerage

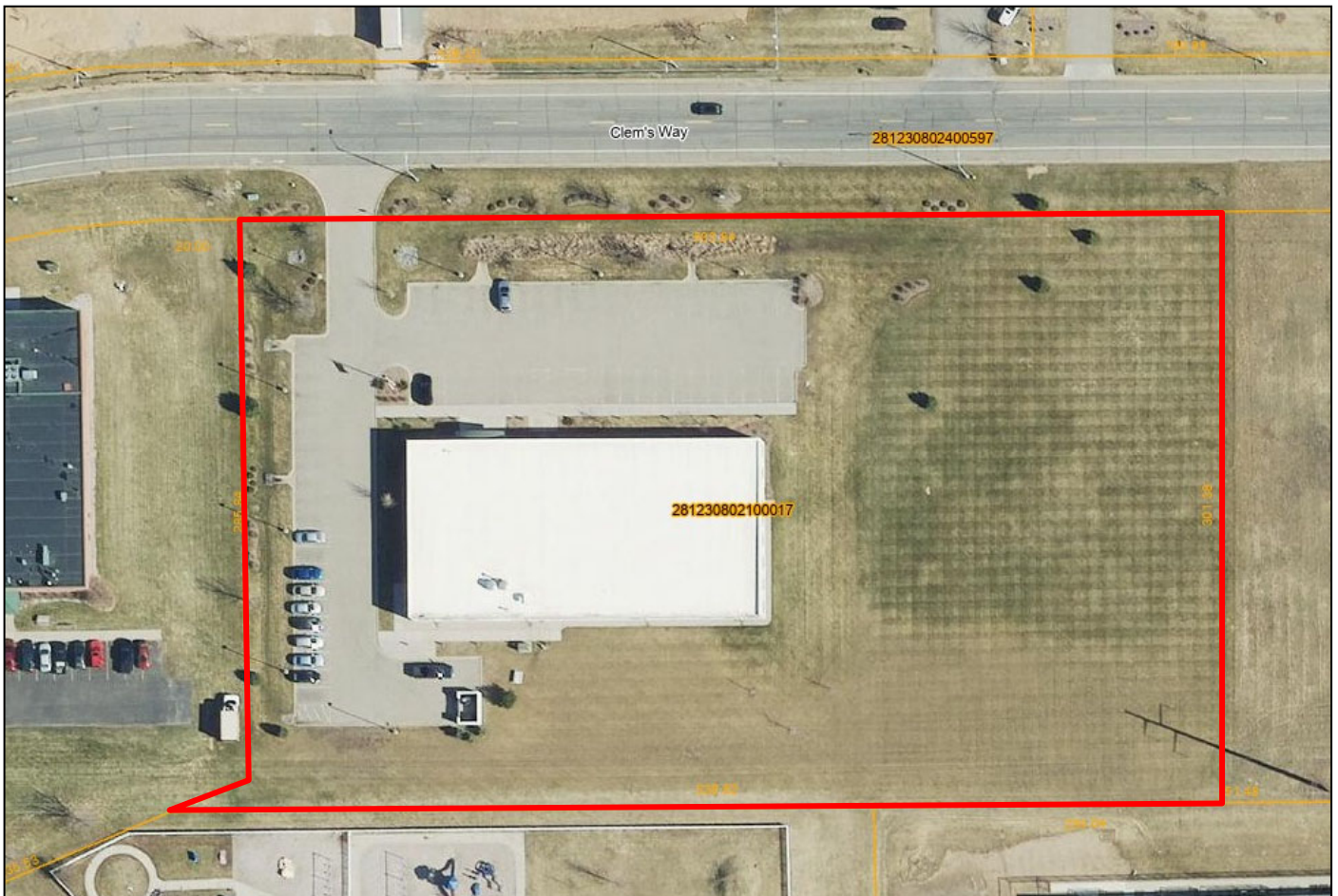
Thomas G. Phillips, CCIM, SIOR
Phone: 608.243.9070
Mobile: 608.770.4950
E-mail: tomp@ruedeBusch.com

FOR SALE or LEASE

**5417 Clem's Way
Stevens Point, WI 54482**



Parcel 281-23-0802100017



**For More Information
Please Contact:**

RuedeBusch Commercial Investments
4605 Dovetail Drive
Madison, WI 53704
www.ruedeBusch.com/brokerage

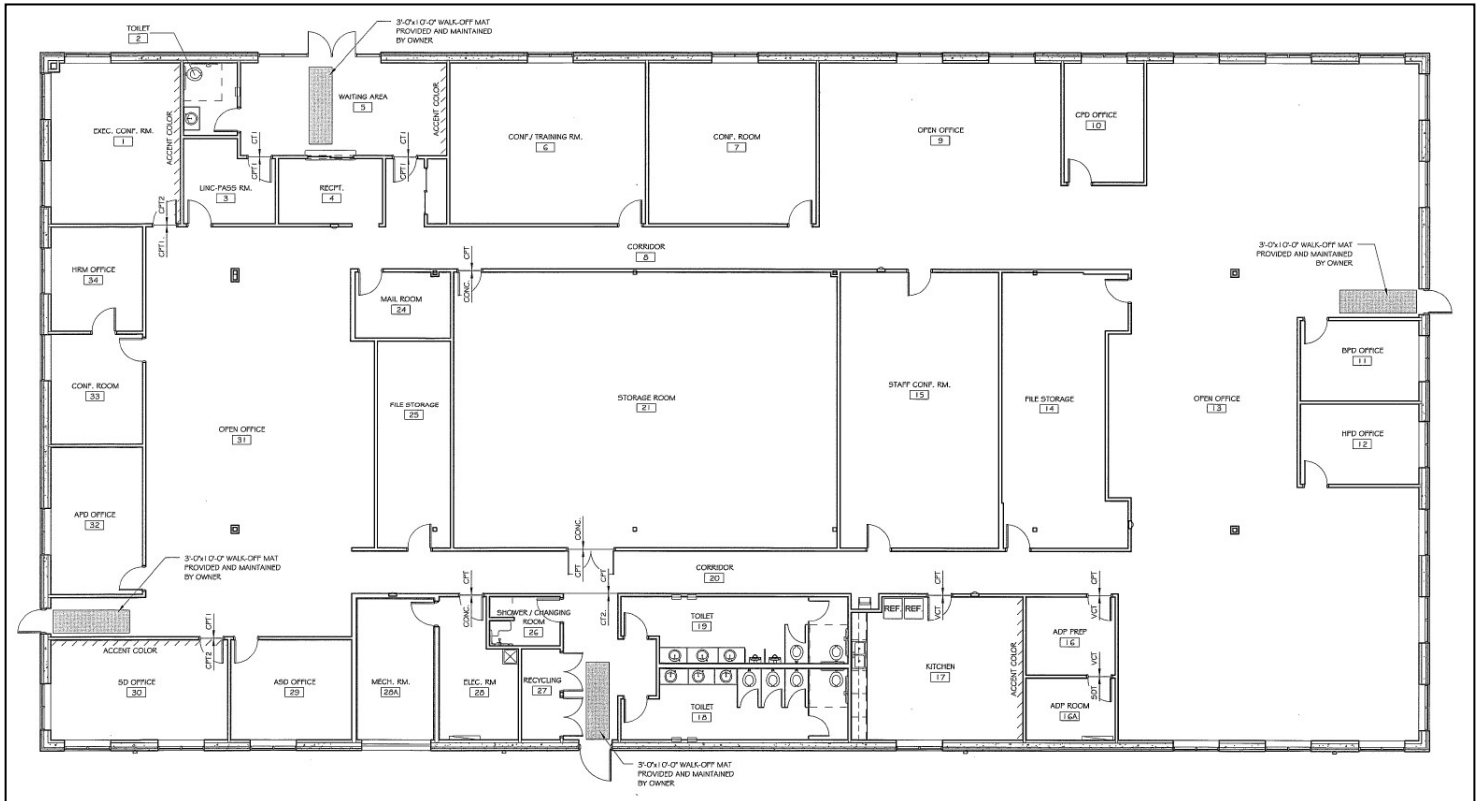
Thomas G. Phillips, CCIM, SIOR
Phone: 608.243.9070
Mobile: 608.770.4950
E-mail: tomp@ruedeBusch.com

FOR SALE or LEASE

5417 Clem's Way
Stevens Point, WI 54482



Floor Plan



Private Offices: 8
Open Office Area: 4
Conference/Training Rooms: 5
Storage/Mail Room: 4
Reception, Kitchen/Break Room, Restrooms, Shower

**For More Information
Please Contact:**

RuedeBusch Commercial Investments
4605 Dovetail Drive
Madison, WI 53704
www.ruedeBusch.com/brokerage

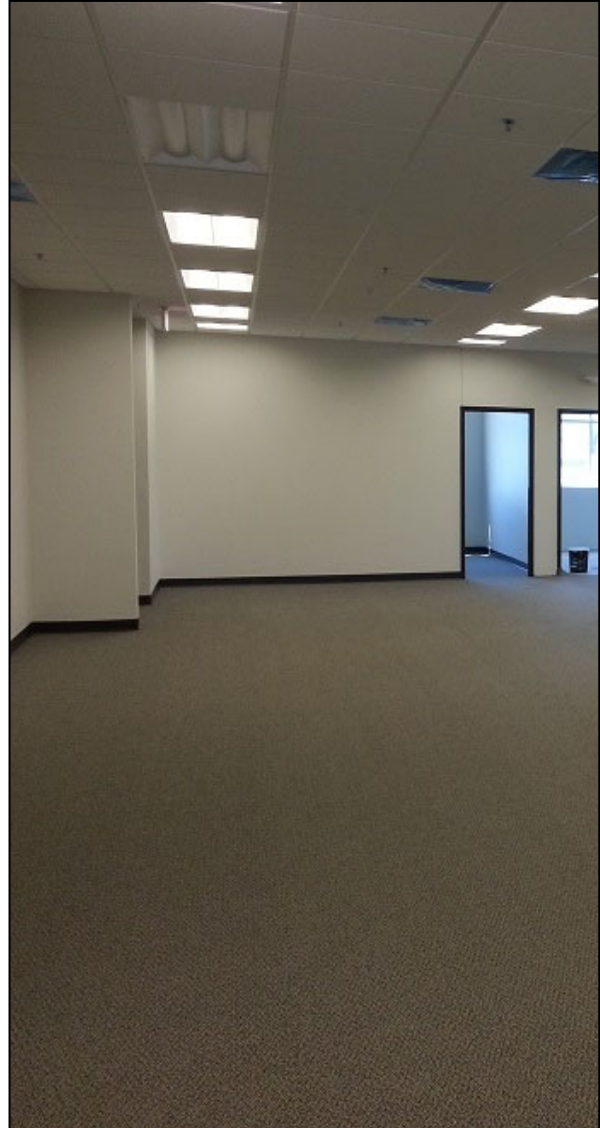
Thomas G. Phillips, CCIM, SIOR
Phone: 608.243.9070
Mobile: 608.770.4950
E-mail: tomp@ruedeBusch.com

FOR SALE or LEASE

**5417 Clem's Way
Stevens Point, WI 54482**



Pictures



**For More Information
Please Contact:**

RuedeBusch Commercial Investments
4605 Dovetail Drive
Madison, WI 53704
www.ruedeBusch.com/brokerage

Thomas G. Phillips, CCIM, SIOR
Phone: 608.243.9070
Mobile: 608.770.4950
E-mail: tomp@ruedeBusch.com

DISCLOSURE TO NON-RESIDENTIAL CUSTOMERS

1 Prior to negotiating on your behalf the brokerage firm, or an agent associated with the firm, must provide you the
2 following disclosure statement:

3 **DISCLOSURE TO CUSTOMERS** You are a customer of the brokerage firm (hereinafter Firm). The Firm is either an agent
4 of another party in the transaction or a subagent of another firm that is the agent of another party in the transaction. A
5 broker or a salesperson acting on behalf of the Firm may provide brokerage services to you. Whenever the Firm is
6 providing brokerage services to you, the Firm and its brokers and salespersons (hereinafter Agents) owe you, the
7 customer, the following duties:

8 (a) The duty to provide brokerage services to you fairly and honestly.

9 (b) The duty to exercise reasonable skill and care in providing brokerage services to you.

10 (c) The duty to provide you with accurate information about market conditions within a reasonable time if you request
11 it, unless disclosure of the information is prohibited by law.

12 (d) The duty to disclose to you in writing certain Material Adverse Facts about a property, unless disclosure of the
13 information is prohibited by law (see lines 42-51).

14 (e) The duty to protect your confidentiality. Unless the law requires it, the Firm and its Agents will not disclose your
15 confidential information or the confidential information of other parties (see lines 23-41).

16 (f) The duty to safeguard trust funds and other property held by the Firm or its Agents.

17 (g) The duty, when negotiating, to present contract proposals in an objective and unbiased manner and disclose the
18 advantages and disadvantages of the proposals.

19 Please review this information carefully. An Agent of the Firm can answer your questions about brokerage services,
20 but if you need legal advice, tax advice, or a professional home inspection, contact an attorney, tax advisor, or home
21 inspector. This disclosure is required by section 452.135 of the Wisconsin statutes and is for information only. It is a
22 plain-language summary of the duties owed to a customer under section 452.133(1) of the Wisconsin statutes.

23 **CONFIDENTIALITY NOTICE TO CUSTOMERS** The Firm and its Agents will keep confidential any information given to the
24 Firm or its Agents in confidence, or any information obtained by the Firm and its Agents that a reasonable person
25 would want to be kept confidential, unless the information must be disclosed by law or you authorize the Firm to
26 disclose particular information. The Firm and its Agents shall continue to keep the information confidential after the
27 Firm is no longer providing brokerage services to you.

28 The following information is required to be disclosed by law:

29 1. Material Adverse Facts, as defined in Wis. Stat. § 452.01(5g) (see lines 42-51).

30 2. Any facts known by the Firm or its Agents that contradict any information included in a written inspection
31 report on the property or real estate that is the subject of the transaction.

32 To ensure that the Firm and its Agents are aware of what specific information you consider confidential, you may
33 list that information below (see lines 35-41) or provide that information to the Firm or its Agents by other means. At a
34 later time, you may also provide the Firm or its Agents with other Information you consider to be confidential.

35 **CONFIDENTIAL INFORMATION:** _____

36 _____
37 _____

38 **NON-CONFIDENTIAL INFORMATION** (the following information may be disclosed by the Firm and its Agents): _____

39 _____
40 _____

41 _____ (Insert information you authorize to be disclosed, such as financial qualification information.)

42 **DEFINITION OF MATERIAL ADVERSE FACTS**

43 A "Material Adverse Fact" is defined in Wis. Stat. § 452.01(5g) as an Adverse Fact that a party indicates is of such
44 significance, or that is generally recognized by a competent licensee as being of such significance to a reasonable
45 party, that it affects or would affect the party's decision to enter into a contract or agreement concerning a transaction
46 or affects or would affect the party's decision about the terms of such a contract or agreement.

47 An "Adverse Fact" is defined in Wis. Stat. § 452.01(1e) as a condition or occurrence that a competent licensee
48 generally recognizes will significantly and adversely affect the value of the property, significantly reduce the structural
49 integrity of improvements to real estate, or present a significant health risk to occupants of the property; or information
50 that indicates that a party to a transaction is not able to or does not intend to meet his or her obligations under a
51 contract or agreement made concerning the transaction.

52 **NOTICE ABOUT SEX OFFENDER REGISTRY** You may obtain information about the sex offender registry and persons
53 registered with the registry by contacting the Wisconsin Department of Corrections on the Internet at
54 <http://www.doc.wi.gov> or by telephone at 608-240-5830.

No representation is made as to the legal validity of any provision or the adequacy of any provision in any specific transaction.
Copyright © 2016 by Wisconsin REALTORS® Association Drafted by Attorney Debra Peterson Conrad