



FIORE
COMPANIES

PREMIER OFFICE SPACE FOR LEASE fiorecompanies.com | (608) 255-5060 | 

BUILDING HIGHLIGHTS

NETWORK222 | 222 WEST WASHINGTON AVENUE
MADISON, WI



DETAILS

TYPE	Office
BUILT/RENOVATED	1972/2012
CLASS	A
SIZE	190,000 SF
TYPICAL FLOOR	18,293 SF
BUILDING HEIGHT	10 Stories
UNFINISHED CEILING	10'

SELECT TENANTS

Stafford & Rosenbaum
Carlson Black O'Callaghan & Battenberg
Madison Symphony Orchestra
Pierce Engineers
Wisconsin IceCube Particle Astrophysics Center
AARP Wisconsin

BUILDING HIGHLIGHTS

NETWORK222 | 222 WEST WASHINGTON AVENUE
MADISON, WI

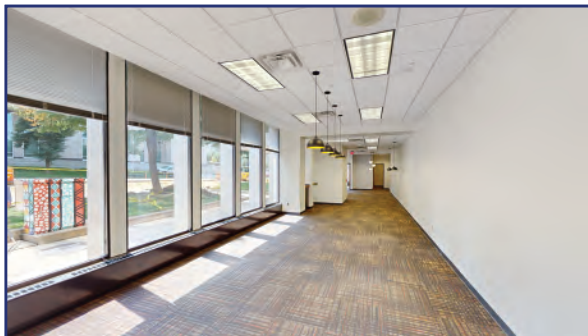
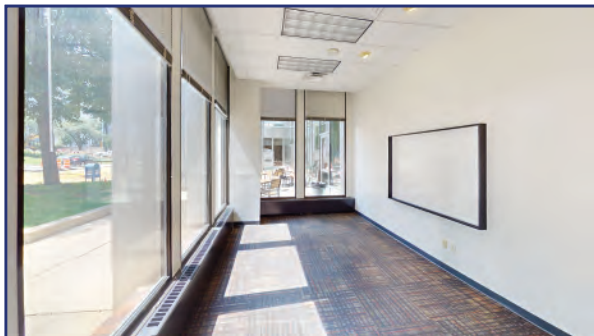


MARKET LEADING AMENITIES

- Best-in-Madison data & telecommunications connectivity
- 24-hour secured access
- On-site security
- Underground parking garage with dedicated tenant and visitor parking, and direct elevator access to all floors
- Secured bicycle racks and lockers
- Shower and locker facilities
- Common conference/employee training room
- Kitchenette and break room, equipped with vending machines
- Best-of-Madison recipient, Casetta Kitchen & Counter, on ground floor
- Professionally managed by The Fiore Companies, with dedicated building technicians
- Steps away from The Capital Square, State Street, and Overture Center

SUITE 20 OVERVIEW

NETWORK222 | 222 WEST WASHINGTON AVENUE
MADISON, WI



HIGHLIGHTS

SQUARE FEET	2,157
RATE PER SQUARE FOOT	\$34.00 MG
INTERIOR PRIVATE OFFICE	1
CONFERENCE ROOM	1
KITCHEN/BREAK AREA	1
LOBBY/RECEPTION AREA	1
ADJACENT RESTROOMS	1/1
OPPORTUNITY FOR BUILDING SIGNAGE	
PRIVATE GROUND LEVEL ENTRANCE	
PRIME VISABILITY ALONG WEST WASHINGTON AVENUE & FAIRCHILD STREET	
ABUNDANCE OF NATURAL LIGHT	
MOVE IN READY	



View 3D Tour



fiorecompanies.com | (608) 255-5060 | 

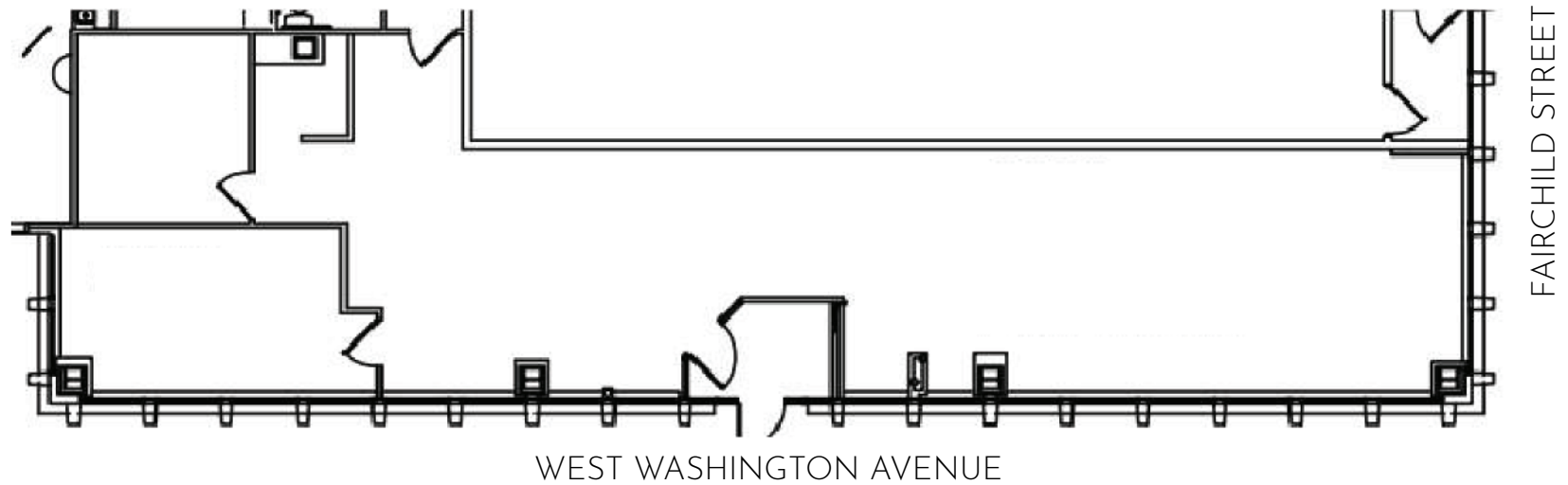
1ST FLOOR OVERVIEW

NETWORK222 | 222 WEST WASHINGTON AVENUE
MADISON, WI



SUITE 20 FLOORPLAN

NETWORK222 | 222 WEST WASHINGTON AVENUE
MADISON, WI



CONTACT US

NETWORK222 | 222 WEST WASHINGTON AVENUE
MADISON, WI



Corey Kautzky, CRRP
Vice President
D: (608) 665-1230
ckautzky@fioreco.com



Lindsay Kruger, MBA
President
D: (608) 665-1233
lkruger@fioreco.com



fiorecompanies.com | (608) 255-5060 | 

DISCLOSURES

NETWORK222 | 222 WEST WASHINGTON AVENUE
MADISON, WI

Prior to negotiating on your behalf, the brokerage firm, or an agent associated with the firm, must provide you the following disclosure statement:

DISCLOSURE TO CUSTOMERS

You are a customer of the brokerage firm (hereinafter Firm). The Firm is either an agent of another party in the transaction or a subagent of another firm that is the agent of another party in the transaction. A broker or a salesperson acting on behalf of the Firm may provide brokerage services to you. Whenever the Firm is providing brokerage services to you, the Firm and its brokers and salespersons (hereinafter Agents) owe you, the customer, the following duties:

- The duty to provide brokerage services to you fairly and honestly.
- The duty to exercise reasonable skill and care in providing brokerage services to you.
- The duty to provide you with accurate information about market conditions within a reasonable time if you request it, unless disclosure of the information is prohibited by law.
- The duty to disclose to you in writing certain Material Adverse Facts about a property, unless disclosure of the information is prohibited by law (see "DEFINITION OF MATERIAL ADVERSE FACTS" below).
- The duty to protect your confidentiality. Unless the law requires it, the Firm and its Agents will not disclose your confidential information or the confidential information of other parties. (see "CONFIDENTIALITY NOTICE TO CUSTOMERS" below).
- The duty to safeguard trust funds and other property held by the Firm or its Agents.
- The duty, when negotiating, to present contract proposals in an objective and unbiased manner and disclose the advantages and disadvantages of the proposals.

Please review this information carefully. An Agent of the Firm can answer your questions about brokerage services, but if you need legal advice, tax advice, or a professional home inspection, contact an attorney, tax advisor, or a home inspector.

This disclosure is required by section 452.135 of the Wisconsin statutes and is for information only. It is a plain-language summary of the duties owed to a customer under section 452.133(1) of the Wisconsin statutes.

CONFIDENTIALITY NOTICE TO CUSTOMERS

The Firm and its Agents will keep confidential any information given to the Firm or its Agents in confidence, or any information contained by the Firm and its Agents that a reasonable person would want to be kept confidential, unless the information must be disclosed by law or you authorize the Firm to disclose particular information. The Firm and its Agents shall continue to keep the information confidential after the Firm is no longer providing brokerage services to you.

The following information is required to be disclosed by law:

1. Material Adverse Facts, as defined in Wis. Stat. § 452.01(5g) (see "Definition of Material Adverse Facts" below).
2. Any facts known by the Firm or its Agents that contradict any information included in a written inspection report on the property or real estate that is the subject of the transaction.

To ensure that the Firm and its Agents are aware of what specific information you consider confidential, you may list that information below (see "CONFIDENTIAL INFORMATION" and "NON-CONFIDENTIAL INFORMATION" below). At a later time, you may also provide the Firm or its Agents with other Information you consider to be confidential.

CONFIDENTIAL INFORMATION: _____

NON-CONFIDENTIAL INFORMATION (the following information may be disclosed by the Firm and its Agents): _____

(Insert information you authorize to be disclosed, such as financial qualification information.): _____

NOTICE ABOUT SEX OFFENDER REGISTRY:

You may obtain information about the sex offender registry and persons registered with the registry by contacting the Wisconsin Department of Corrections on the Internet at <http://www.doc.wi.gov> or by telephone at 608-240-5830.

DEFINITION OF MATERIAL ADVERSE FACTS:

A "Material Adverse Fact" is defined in Wis. Stat. § 452.01(5g) as an Adverse Fact that a party indicates is of such significance, or that is generally recognized by a competent licensee as being of such significance to a reasonable party, that it affects or would affect the party's decision to enter into a contract or agreement concerning a transaction or affects or would affect the party's decision about the terms of such a contract or agreement.

An "Adverse Fact" is defined in Wis. Stat. § 452.01(1e) as a condition or occurrence that a competent licensee generally recognizes will significantly and adversely affect the value of the property, significantly reduce the structural integrity of improvements to real estate, or present a significant health risk to occupants of the property; or information that indicates that a party to a transaction is not able to or does not intend to meet his or her obligations under a contract or agreement made concerning the transaction.

No representation is made as to the legal validity of any provision or the adequacy of any provision in any specific transaction.



fiorecompanies.com | (608) 255-5060 | 