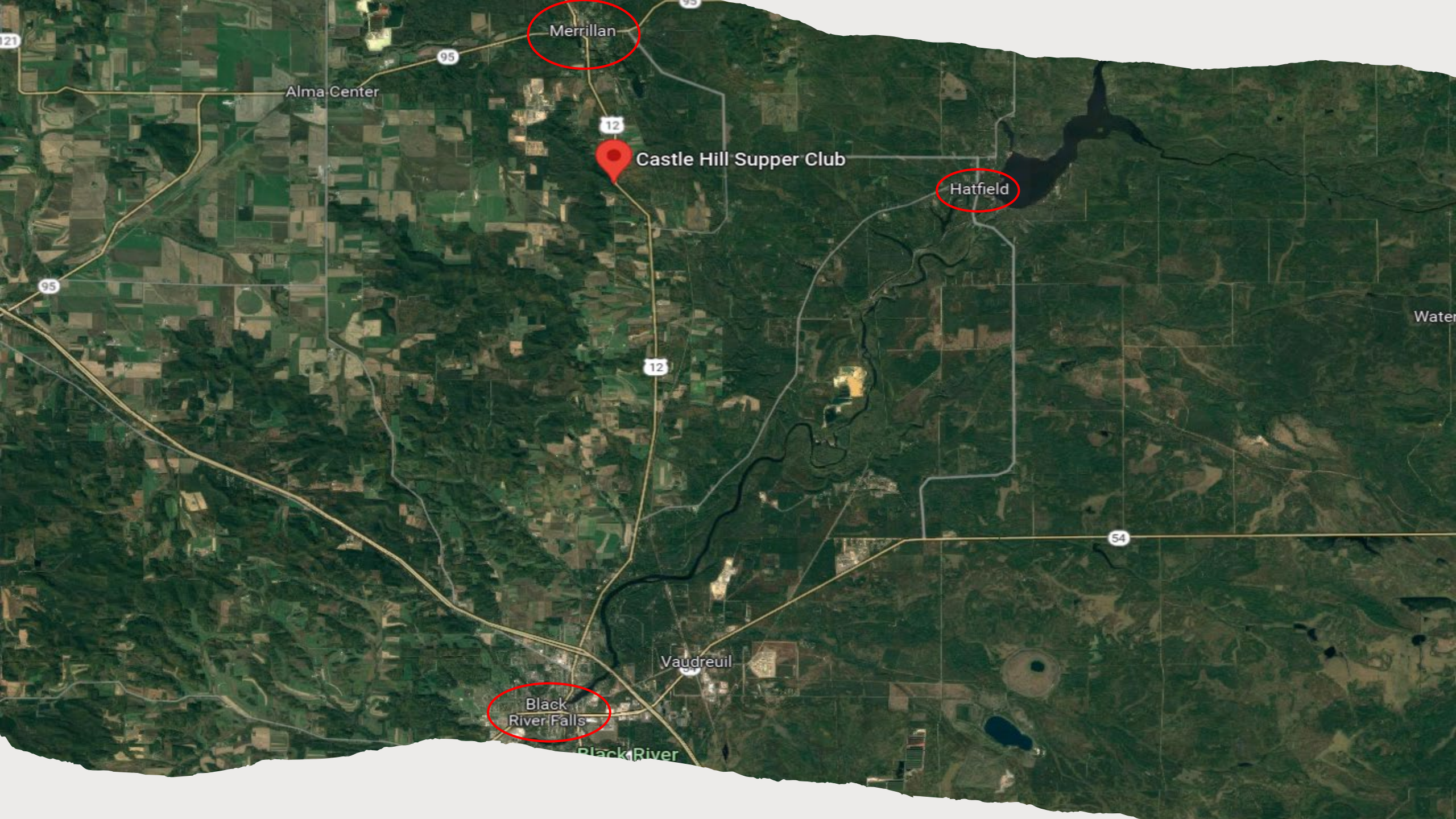




SLABY & ASSOCIATES

Castle Hill Supper Club

Merrillan, WI



Merrillan

Alma Center

Castle Hill Supper Club

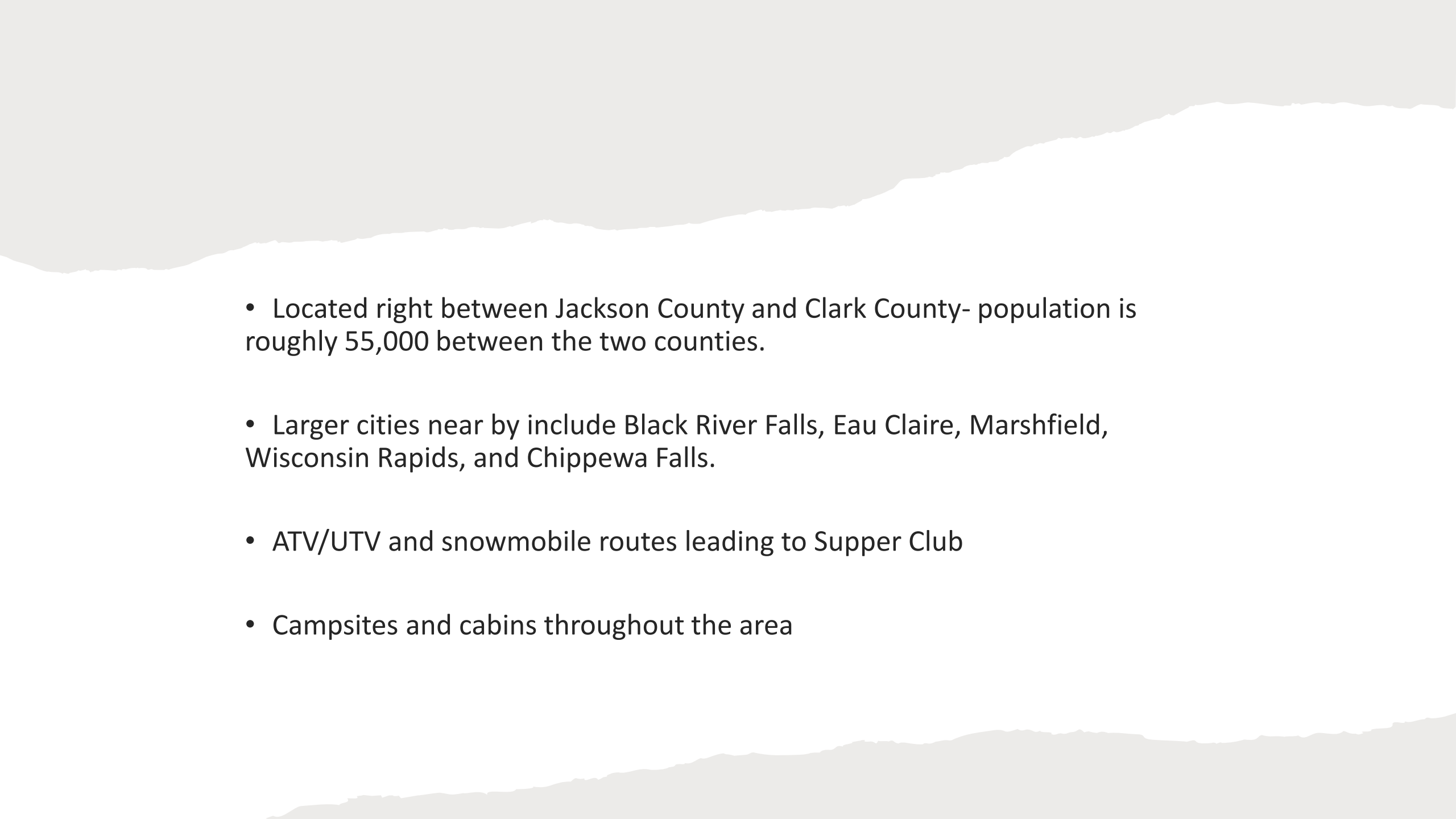
Hatfield

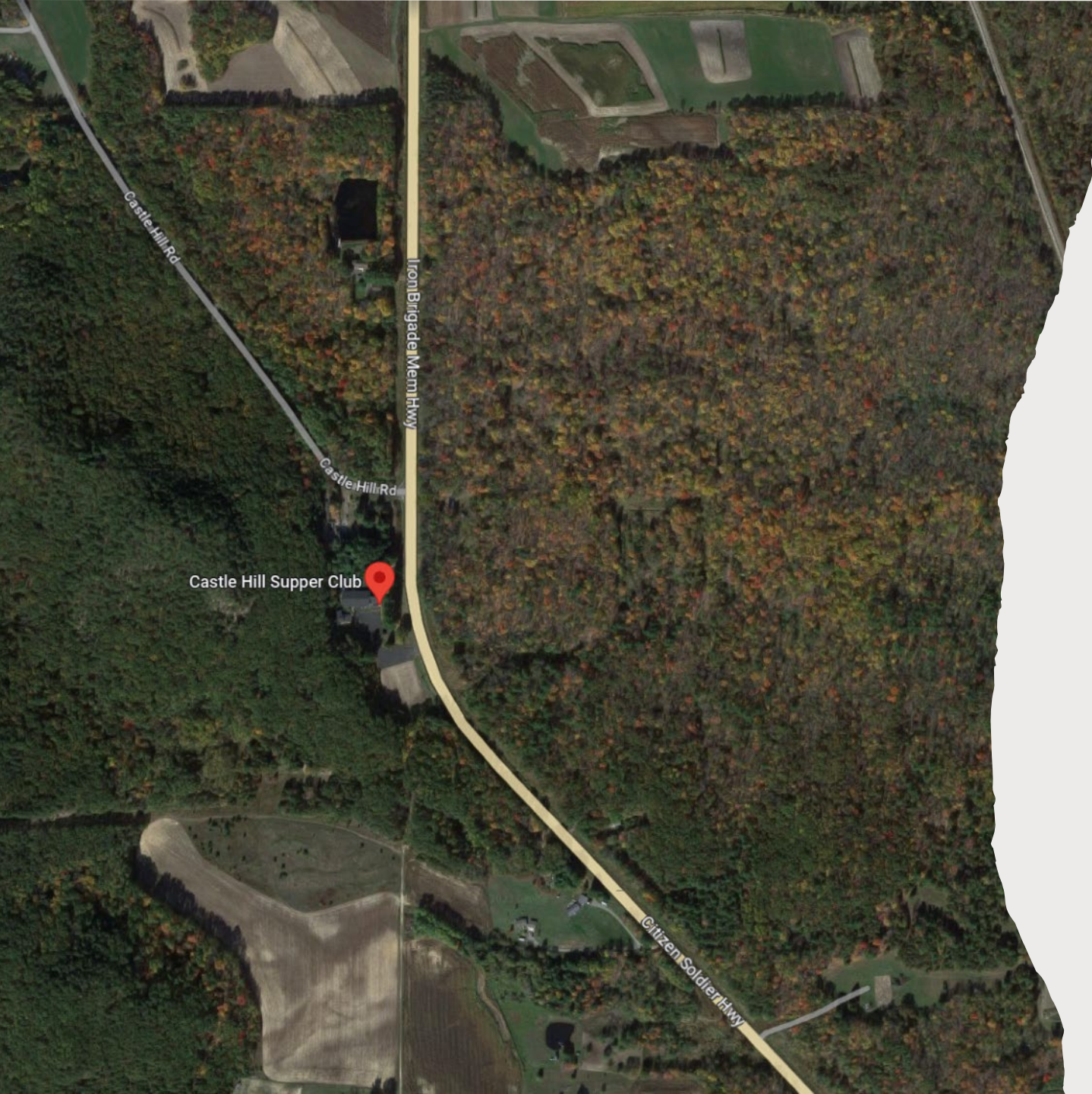
Water

Vaudreuil

Black River Falls

Black River

- 
- Located right between Jackson County and Clark County- population is roughly 55,000 between the two counties.
 - Larger cities near by include Black River Falls, Eau Claire, Marshfield, Wisconsin Rapids, and Chippewa Falls.
 - ATV/UTV and snowmobile routes leading to Supper Club
 - Campsites and cabins throughout the area



General Information

- 6,000 sq ft
- Asking price: \$1,450,000.00
- Business is being sold turn-key
- 16 acres of land with a residential unit on site.
- Includes a separate shed/garage
- Has attached banquet hall with bar
- Investment Opportunities
- Inventory sold in separate transaction

Residential Unit:

3 bed

2 bath

2 car garage







Dining & Bar






Banquet Hall & Bar

Can fit up to 300 guests!





Kitchen

- 
- Castle Hill Supper Club has been a long time favorite for Jackson County and the surrounding communities since 1976. Known for their Friday grand seafood buffet, Saturday prime rib, and “Famous” brandy old fashions, they want to see the supper club continue to flourish as they move on to the next chapter in their life.
 - The business is being sold turn-key. Overall, with a residential home on the property, a separate shed/garage, the supper club including 2 bars and a banquet hall, and ample space for gatherings - this is a once in a lifetime find and opportunity.
 - Owner occupied – live on site right next to where you work or rent out to management! Opportunity to add cabins or an Airbnb!
 - It’s time for YOU to bring your ideas, experience, and dreams and make them come to life. Revamp and refresh this Supper Club and make it YOURS.



SLABY & ASSOCIATES
COMMERCIAL REAL ESTATE
BROKERAGE

1100 John P Livesey Boulevard, Verona, WI 53593
Office: 608-333-4130 Fax: 608-845-2296
<https://slabyandassociates.com>

Please call, text, or email with any
questions!

Dean Slaby
608-219-8506
deans@slabyandassociates.com