

# Madison Enterprise Center

100 S Baldwin St, Madison, WI 53703

A start-up & expanding small business incubator in the heart of Madison's East side



## Suite 205

\$11.22 per Sq Ft

Available 3/15/25



### Suite Information:

- ◇ 1,455 Square Feet
- ◇ "Double" sized space with 2 sets of windows
- ◇ One handwashing sink
- ◇ Storage rooms
- ◇ Rent = \$1,360 per month

### About the Madison Enterprise Center:

- ⇒ Exciting entrepreneurial community
- ⇒ Networking events
- ⇒ Affordable rent
- ⇒ High speed fiber Internet access included in rent
- ⇒ Connections with potential Funding Opportunities
- ⇒ Video-conferencing equipment
- ⇒ On-site manager
- ⇒ Conference room
- ⇒ On-site parking for tenants
- ⇒ Business assistance & referral services

**Central City Location:** 100 S. Baldwin St - 1.5 miles east of the Capitol in the heart of the vibrant Williamson-Marquette neighborhood and the Capitol East District.

### Facility Information

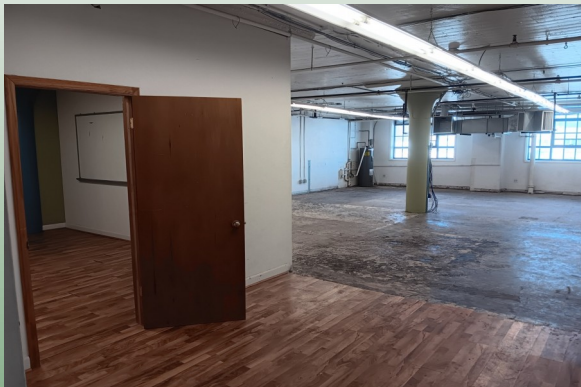
**Heating & Cooling:** Suites are equipped with energy efficient gas-fired furnaces and air conditioning units. Tenants pay utilities.

**Electrical Service:** 3-phase 1300 amp service 120-volt power (230-volt power available)

**Water:** Suites have cold water service.

**Loading Dock:** Loading area can accommodate semi truck deliveries. Material handling equipment is available. Freight elevator has 4,000 lb. capacity.

**How to Apply:** Businesses that produce a product or provide a service and that have potential for job creation are eligible. To apply please submit an application along with a copy of your business plan. Applicants are invited to attend a Business Development Committee meeting where the application and business plan are reviewed. The Business Development Committee makes all acceptance decisions.



Contact Brendan at Common Wealth for more details about this wonderful opportunity!

(608) 438-6804 or email: [Brendan@cwd.org](mailto:Brendan@cwd.org)