

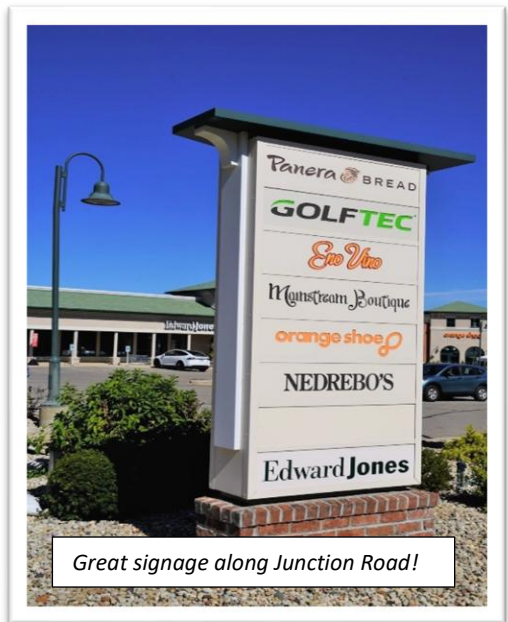
Portofino Place

Property Highlights:

- 605 Junction Road, a 2,630 square foot end-cap space, coming available in Q2 2025!
- *Portofino Place* is perfectly situated along Junction Road, between Old Sauk Road and Mineral Point Road, with easy access to the Beltline.
- Join premiere co-tenant names such as *Panera Bread*, *Golftec*, *Orange Shoe Personal Fitness*, and *Eno Vino Wine Bar*, among others.

Deal Points:

- Base Rent = \$20-\$22/SF (depending on Tenant Improvement needs)
- NNN = \$7.80



**Flad Development
& Investment Corp.**

Brian Flad
Direct: 608.443.4365
bflad@flad-development.com

Josh Romano
Direct: 608.443.4366
jromano@flad-development.com