

RETAIL FOR LEASE

## NEW RETAIL DEVELOPMENT - SUN PRAIRIE

1,903 - 5,731 SF AVAILABLE



## PUMPKIN PATCH - NEW RETAIL SPACE FOR LEASE

**OAKBROOK CORPORATION**  
2 Science Court, Suite 200  
Madison, WI 53711



**PRESENTED BY:**

**TONY KEUNTJES**  
CRE Associate  
office: (608) 443-1039  
cell: (715) 451-3252  
akeuntjes@oakbrookcorp.com

**BRYANT MEYER, CCIM**  
Broker, Associate  
office: (608) 443-1004  
cell: (608) 633-2242  
bmeyer@oakbrookcorp.com

The calculations and data presented are deemed to be accurate, but not guaranteed. They are intended for the purpose of illustrative projections and analysis. The information provided is not intended to replace or serve as substitute for any legal, accounting, investment, real estate, tax or other professional advice, consultation or service. The user of this software should consult with a professional in the respective legal, accounting, tax or other professional area before making any decisions.

# PROPERTY SUMMARY



## Property Summary

Available SF:	1,903 - 5,731 SF
Lease Rate:	\$24-28/SF NNN
TI Allowance:	Negotiable
Lease Term:	5-10 Years
Date Available:	Occupancy 2025
Parking:	74 Parking Stalls
Parking Ratio:	4.62/1000
Building Features:	Drive-Thru   Rooftop Patios
Delivery Condition:	Grey Box
Zoning:	(PD) Planned Development
Visibility:	Highway 151

## Property Overview

Drive-Thru and Roof Top Patio retail spaces available at Sun Prairie's new Pumpkin Patch retail development. Come join other prominent Tenants at one of the only existing retail space opportunities near the S Grand Ave area.

First Floor Drive-Thru Window Space (1,903 SF)  
Second Floor Roof Top Patio Space (2,000-5,731 SF)

Tenants will be additionally responsible for real estate taxes, building insurance, CAM, trash/recycling, phone/data, janitorial, and utilities.

Highway 151 Traffic Count - 52,800 Vehicles Per Day

OAKBROOK CORPORATION  
2 Science Court, Suite 200  
Madison, WI 53711



TONY KEUNTJES  
CRE Associate  
O: (608) 443-1039  
C: (715) 451-3252  
akeuntjes@oakbrookcorp.com

BRYANT MEYER, CCIM  
Broker, Associate  
O: (608) 443-1004  
C: (608) 633-2242  
bmeyer@oakbrookcorp.com

# SITE PLAN



OAKBROOK CORPORATION  
2 Science Court, Suite 200  
Madison, WI 53711



TONY KEUNTJES  
CRE Associate  
O: (608) 443-1039  
C: (715) 451-3252  
akeuntjes@oakbrookcorp.com

BRYANT MEYER, CCIM  
Broker, Associate  
O: (608) 443-1004  
C: (608) 633-2242  
bmeyer@oakbrookcorp.com

# DRIVE-THRU (1,903 SF)



OAKBROOK CORPORATION  
2 Science Court, Suite 200  
Madison, WI 53711



TONY KEUNTJES  
CRE Associate  
O: (608) 443-1039  
C: (715) 451-3252  
akeuntjes@oakbrookcorp.com

BRYANT MEYER, CCIM  
Broker, Associate  
O: (608) 443-1004  
C: (608) 633-2242  
bmeyer@oakbrookcorp.com



## SECOND FLOOR (2,000-5,731 SF)



OAKBROOK CORPORATION  
2 Science Court, Suite 200  
Madison, WI 53711



TONY KEUNTJES  
CRE Associate  
O: (608) 443-1039  
C: (715) 451-3252  
akeuntjes@oakbrookcorp.com

BRYANT MEYER, CCIM  
Broker, Associate  
O: (608) 443-1004  
C: (608) 633-2242  
bmeyer@oakbrookcorp.com

# ELEVATIONS



OAKBROOK CORPORATION  
2 Science Court, Suite 200  
Madison, WI 53711



TONY KEUNTJES  
CRE Associate  
O: (608) 443-1039  
C: (715) 451-3252  
akeuntjes@oakbrookcorp.com

BRYANT MEYER, CCIM  
Broker, Associate  
O: (608) 443-1004  
C: (608) 633-2242  
bmeyer@oakbrookcorp.com

# GRAND AVE AREA MAP



OAKBROOK CORPORATION  
2 Science Court, Suite 200  
Madison, WI 53711



TONY KEUNTJES  
CRE Associate  
O: (608) 443-1039  
C: (715) 451-3252  
akeuntjes@oakbrookcorp.com

BRYANT MEYER, CCIM  
Broker, Associate  
O: (608) 443-1004  
C: (608) 633-2242  
bmeyer@oakbrookcorp.com



# LOCATION MAPS

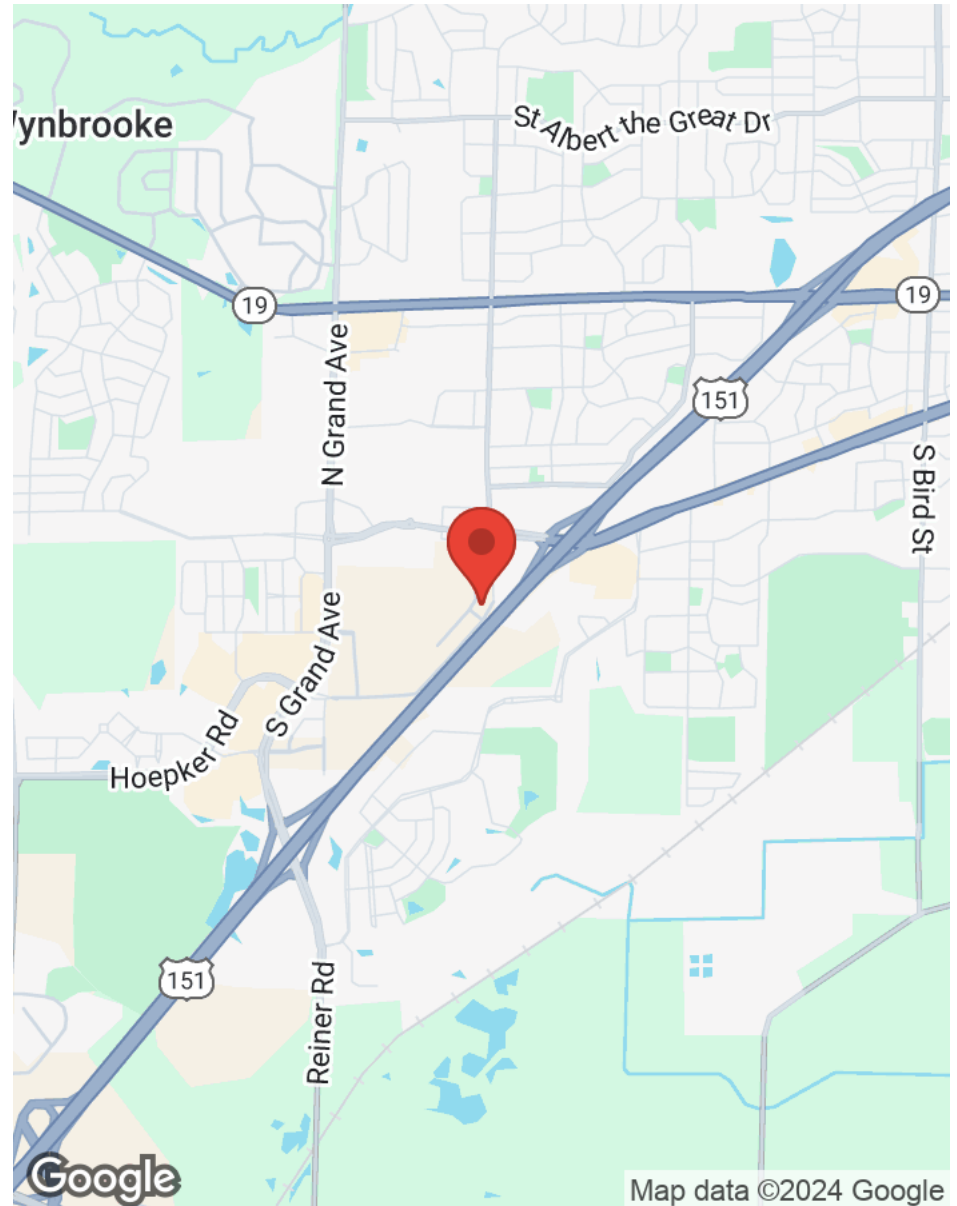


OAKBROOK CORPORATION  
2 Science Court, Suite 200  
Madison, WI 53711



TONY KEUNTJES  
CRE Associate  
O: (608) 443-1039  
C: (715) 451-3252  
akeuntjes@oakbrookcorp.com

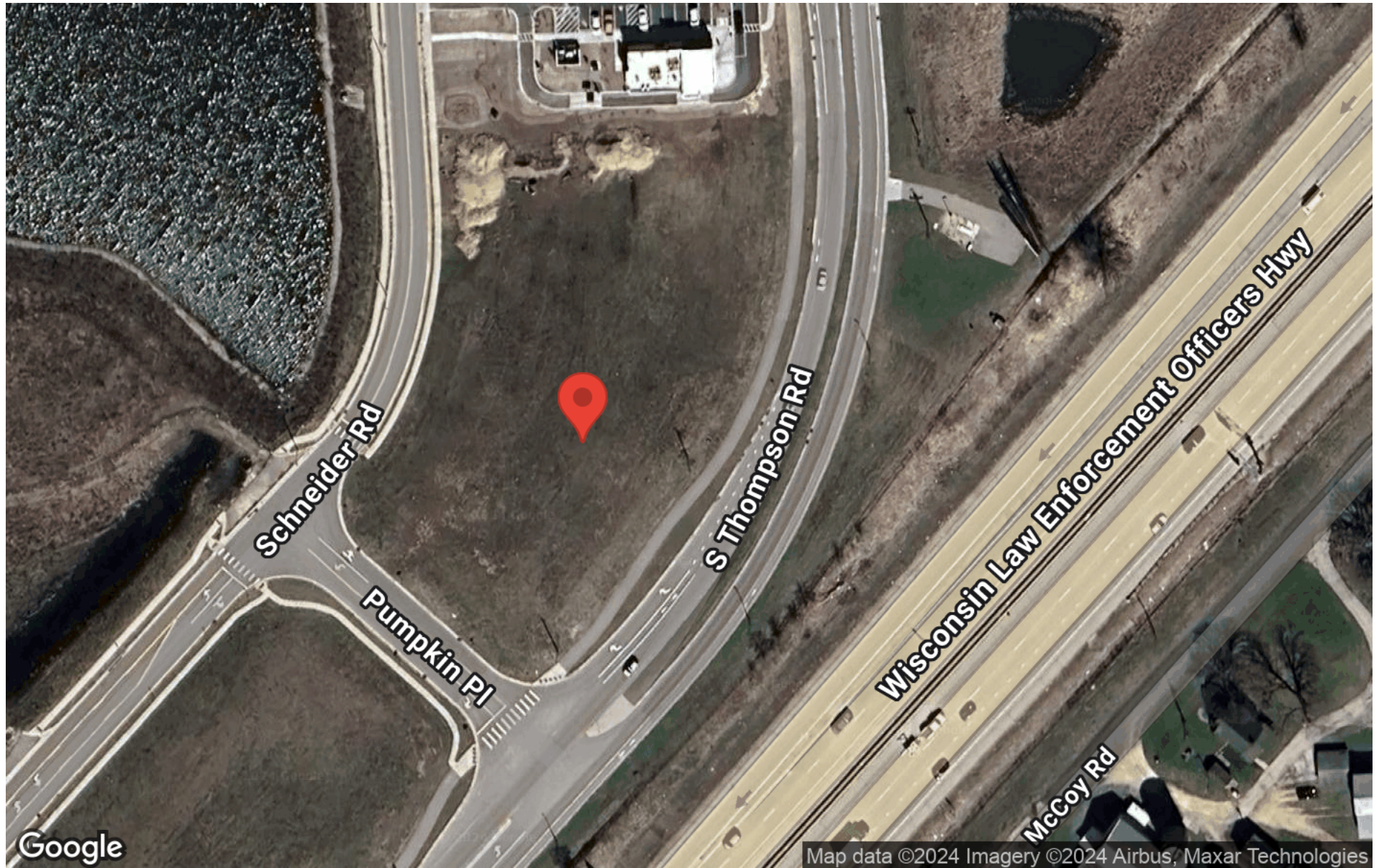
BRYANT MEYER, CCIM  
Broker, Associate  
O: (608) 443-1004  
C: (608) 633-2242  
bmeyer@oakbrookcorp.com



Map data ©2024 Google



# AERIAL MAP



OAKBROOK CORPORATION  
2 Science Court, Suite 200  
Madison, WI 53711



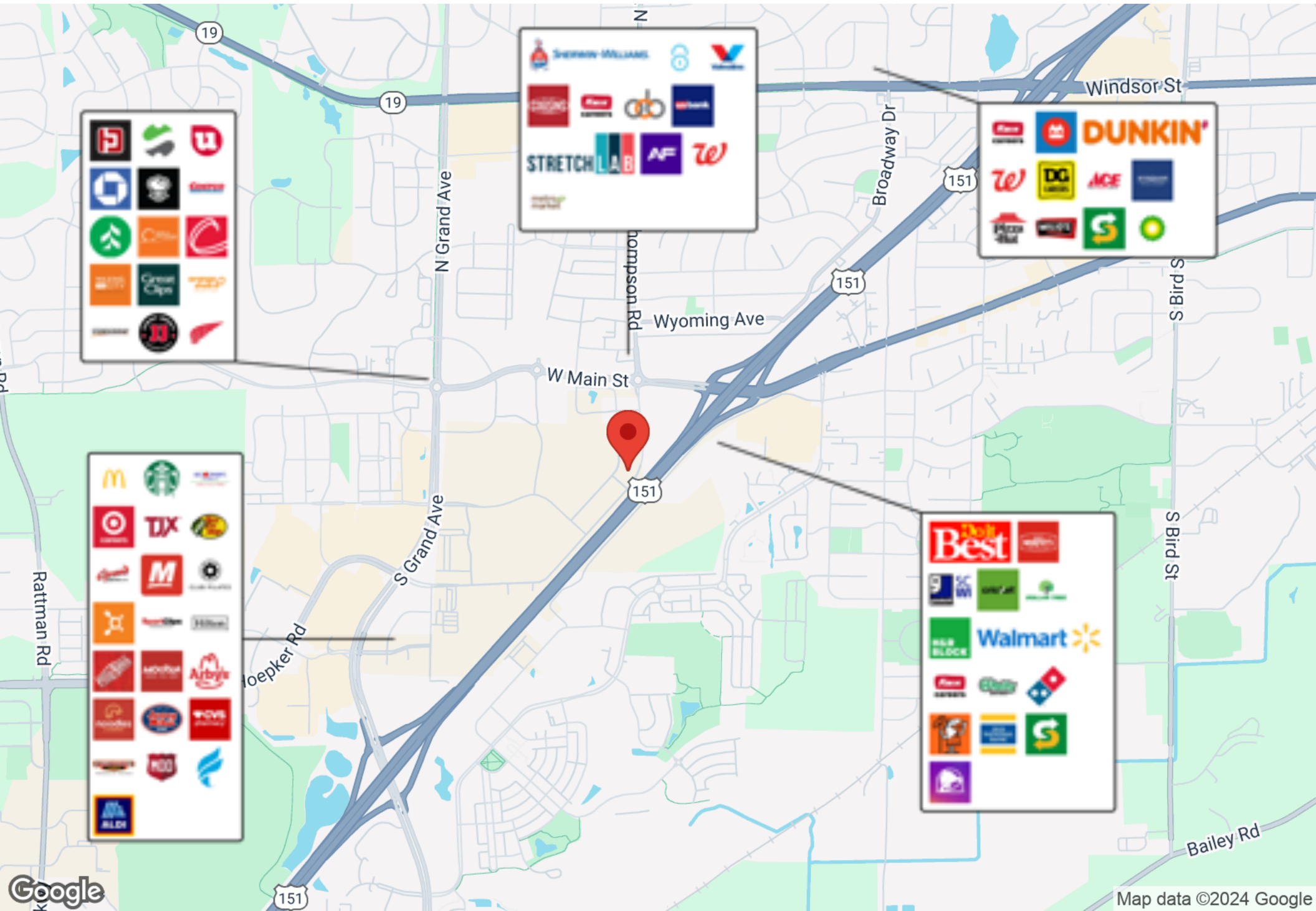
TONY KEUNTJES  
CRE Associate  
O: (608) 443-1039  
C: (715) 451-3252  
akeuntjes@oakbrookcorp.com

BRYANT MEYER, CCIM  
Broker, Associate  
O: (608) 443-1004  
C: (608) 633-2242  
bmeyer@oakbrookcorp.com

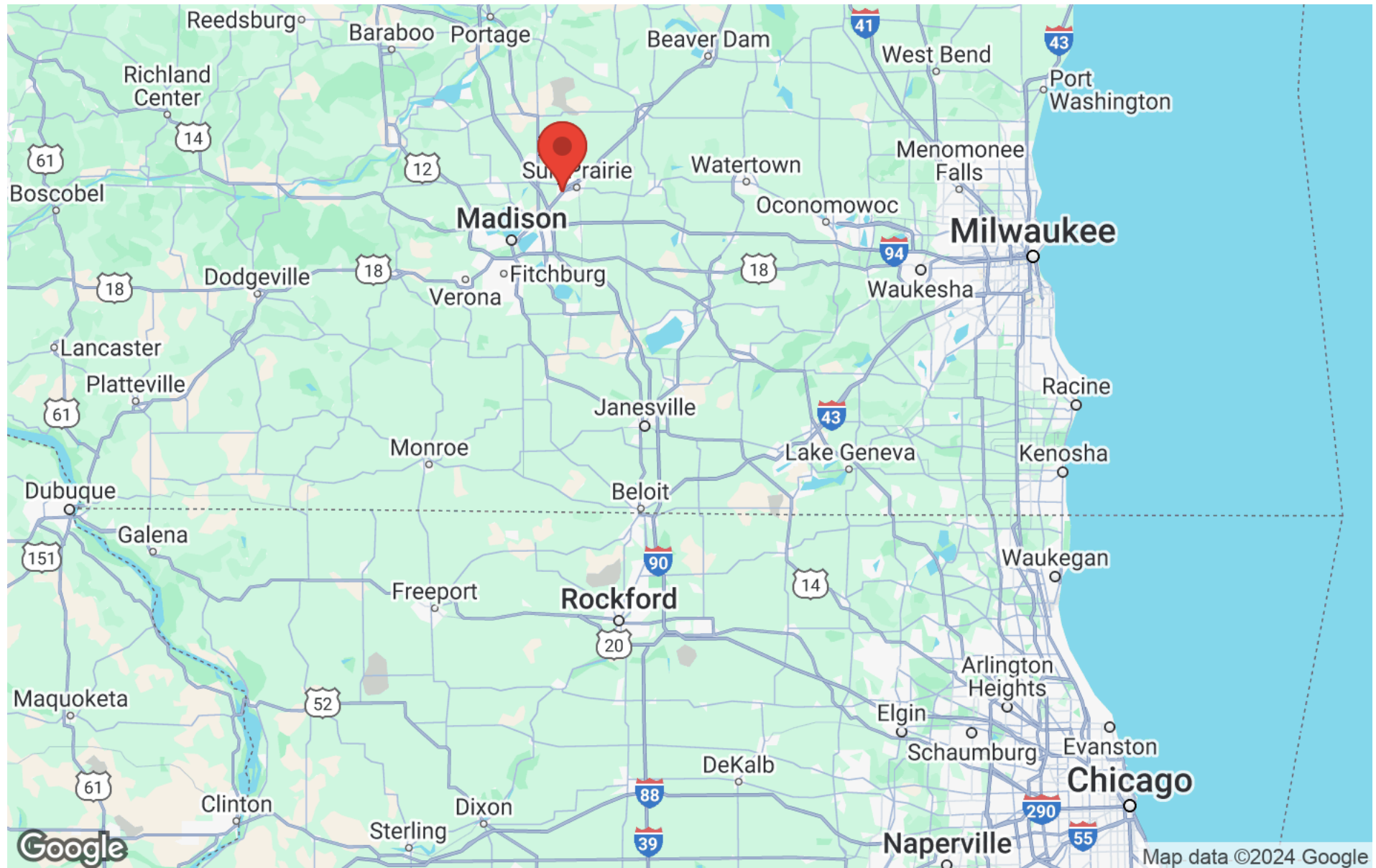
Map data ©2024 Imagery ©2024 Airbus, Maxar Technologies



# BUSINESS MAP



# REGIONAL MAP



**OAKBROOK CORPORATION**  
2 Science Court, Suite 200  
Madison, WI 53711



**TONY KEUNTJES**  
CRE Associate  
O: (608) 443-1039  
C: (715) 451-3252  
[akeuntjes@oakbrookcorp.com](mailto:akeuntjes@oakbrookcorp.com)

**BRYANT MEYER, CCIM**  
Broker, Associate  
O: (608) 443-1004  
C: (608) 633-2242  
[bmeyer@oakbrookcorp.com](mailto:bmeyer@oakbrookcorp.com)



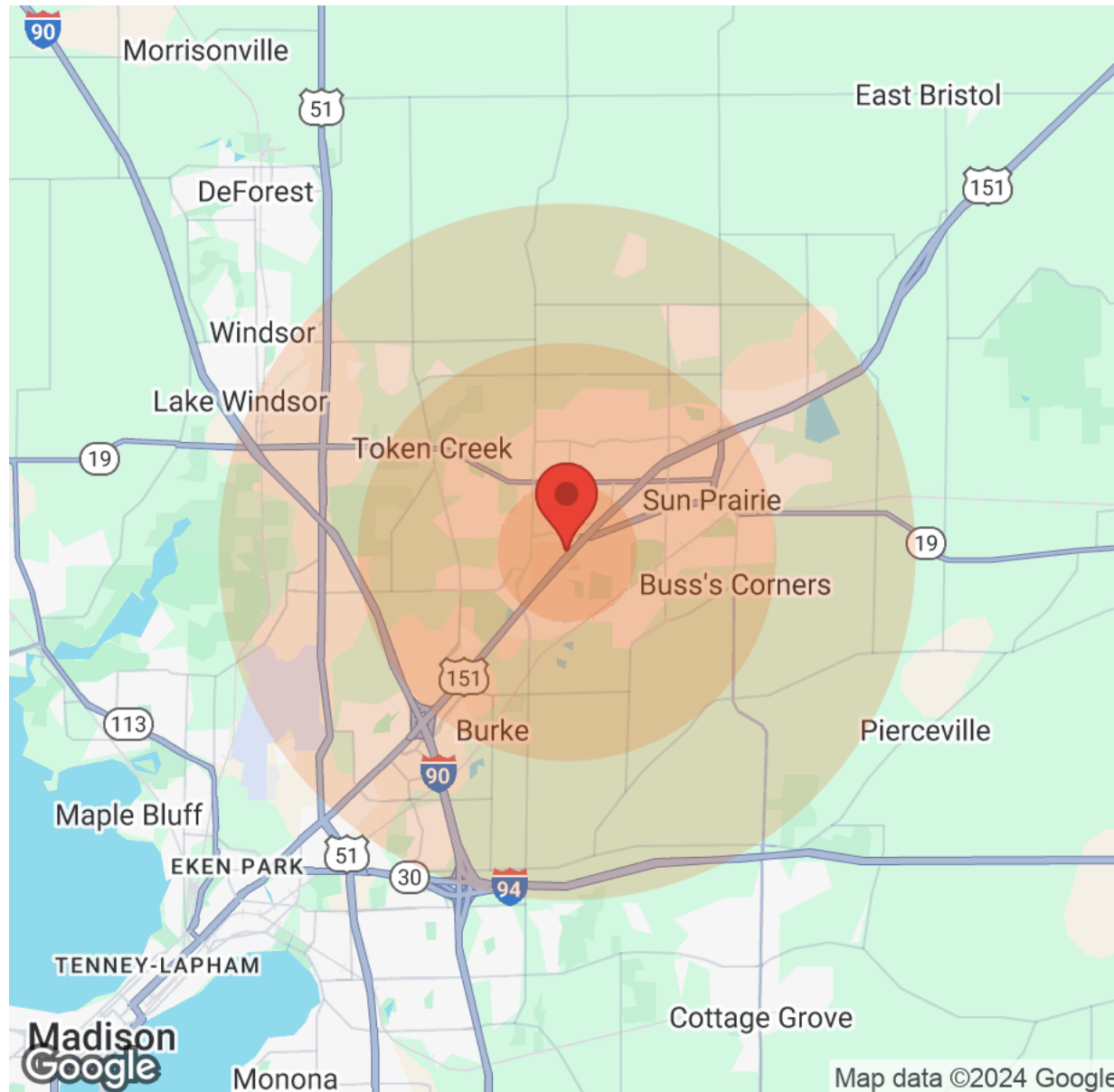


## **City of Sun Prairie – Reasons to Open for Business:**

- Home to one of the fastest growing retail areas in the state.
- One of the most successful downtown redevelopment areas in the state.
- One of the region's most successful employment centers with growing manufacturing, technology, and entrepreneurial sectors.
- 7% population growth year over year.
- Major retailers include Costco, Target, Bass Pro Shops, TJ Maxx, Woodman's, Menards, & Walmart.



# DEMOGRAPHICS



Population	1 Mile	3 Miles	5 Miles
Male	2,016	14,836	29,559
Female	1,860	14,766	29,140
Total Population	3,876	29,602	58,699

Age	1 Mile	3 Miles	5 Miles
Ages 0-14	584	5,884	11,370
Ages 15-24	475	4,318	8,042
Ages 25-54	1,794	11,687	23,773
Ages 55-64	423	3,468	6,983
Ages 65+	600	4,245	8,531

Income	1 Mile	3 Miles	5 Miles
Median	\$61,064	\$62,757	\$61,683
< \$15,000	84	728	1,450
\$15,000-\$24,999	200	814	1,831
\$25,000-\$34,999	198	1,013	2,308
\$35,000-\$49,999	343	1,571	2,842
\$50,000-\$74,999	382	2,550	5,209
\$75,000-\$99,999	319	2,076	4,227
\$100,000-\$149,999	199	2,278	4,098
\$150,000-\$199,999	95	566	1,252
> \$200,000	31	306	719

Housing	1 Mile	3 Miles	5 Miles
Total Units	2,015	12,382	25,019
Occupied	1,883	11,601	23,448
Owner Occupied	766	6,945	14,522
Renter Occupied	1,117	4,656	8,926
Vacant	132	781	1,571

OAKBROOK CORPORATION  
2 Science Court, Suite 200  
Madison, WI 53711



TONY KEUNTJES  
CRE Associate  
O: (608) 443-1039  
C: (715) 451-3252  
akeuntjes@oakbrookcorp.com

BRYANT MEYER, CCIM  
Broker, Associate  
O: (608) 443-1004  
C: (608) 633-2242  
bmeyer@oakbrookcorp.com

# DISCLAIMER

---

All materials and information received or derived from Oakbrook Corporation its directors, officers, agents, advisors, affiliates and/or any third party sources are provided without representation or warranty as to completeness, veracity, or accuracy, condition of the property, compliance or lack of compliance with applicable governmental requirements, developability or suitability, financial performance of the property, projected financial performance of the property for any party's intended use or any and all other matters.

Neither Oakbrook Corporation its directors, officers, agents, advisors, or affiliates makes any representation or warranty, express or implied, as to accuracy or completeness of the materials or information provided, derived, or received. Materials and information from any source, whether written or verbal, that may be furnished for review are not a substitute for a party's active conduct of its own due diligence to determine these and other matters of significance to such party. Oakbrook Corporation will not investigate or verify any such matters or conduct due diligence for a party unless otherwise agreed in writing.

EACH PARTY SHALL CONDUCT ITS OWN INDEPENDENT INVESTIGATION AND DUE DILIGENCE.

Any party contemplating or under contract or in escrow for a transaction is urged to verify all information and to conduct their own inspections and investigations including through appropriate third-party independent professionals selected by such party. All financial data should be verified by the party including by obtaining and reading applicable documents and reports and consulting appropriate independent professionals. Oakbrook Corporation makes no warranties and/or representations regarding the veracity, completeness, or relevance of any financial data or assumptions. Oakbrook Corporation does not serve as a financial advisor to any party regarding any proposed transaction.

All data and assumptions regarding financial performance, including that used for financial modeling purposes, may differ from actual data or performance. Any estimates of market rents and/or projected rents that may be provided to a party do not necessarily mean that rents can be established at or increased to that level. Parties must evaluate any applicable contractual and governmental limitations as well as market conditions, vacancy factors and other issues in order to determine rents from or for the property. Legal questions should be discussed by the party with an attorney. Tax questions should be discussed by the party with a certified public accountant or tax attorney. Title questions should be discussed by the party with a title officer or attorney. Questions regarding the condition of the property and whether the property complies with applicable governmental requirements should be discussed by the party with appropriate engineers, architects, contractors, other consultants, and governmental agencies. All properties and services are marketed by Oakbrook Corporation in compliance with all applicable fair housing and equal opportunity laws.

**OAKBROOK CORPORATION**  
2 Science Court, Suite 200  
Madison, WI 53711



---

*PRESENTED BY:*

**TONY KEUNTJES**

CRE Associate  
O: (608) 443-1039  
C: (715) 451-3252  
akeuntjes@oakbrookcorp.com

**BRYANT MEYER, CCIM**

Broker, Associate  
O: (608) 443-1004  
C: (608) 633-2242  
bmeyer@oakbrookcorp.com

The calculations and data presented are deemed to be accurate, but not guaranteed. They are intended for the purpose of illustrative projections and analysis. The information provided is not intended to replace or serve as substitute for any legal, accounting, investment, real estate, tax or other professional advice, consultation or service. The user of this software should consult with a professional in the respective legal, accounting, tax or other professional area before making any decisions.