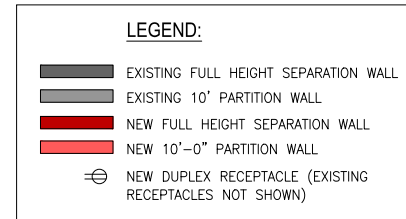


Madison East Business Center
4610 S. Biltmore Lane | Madison, WI 53718
Suite 103



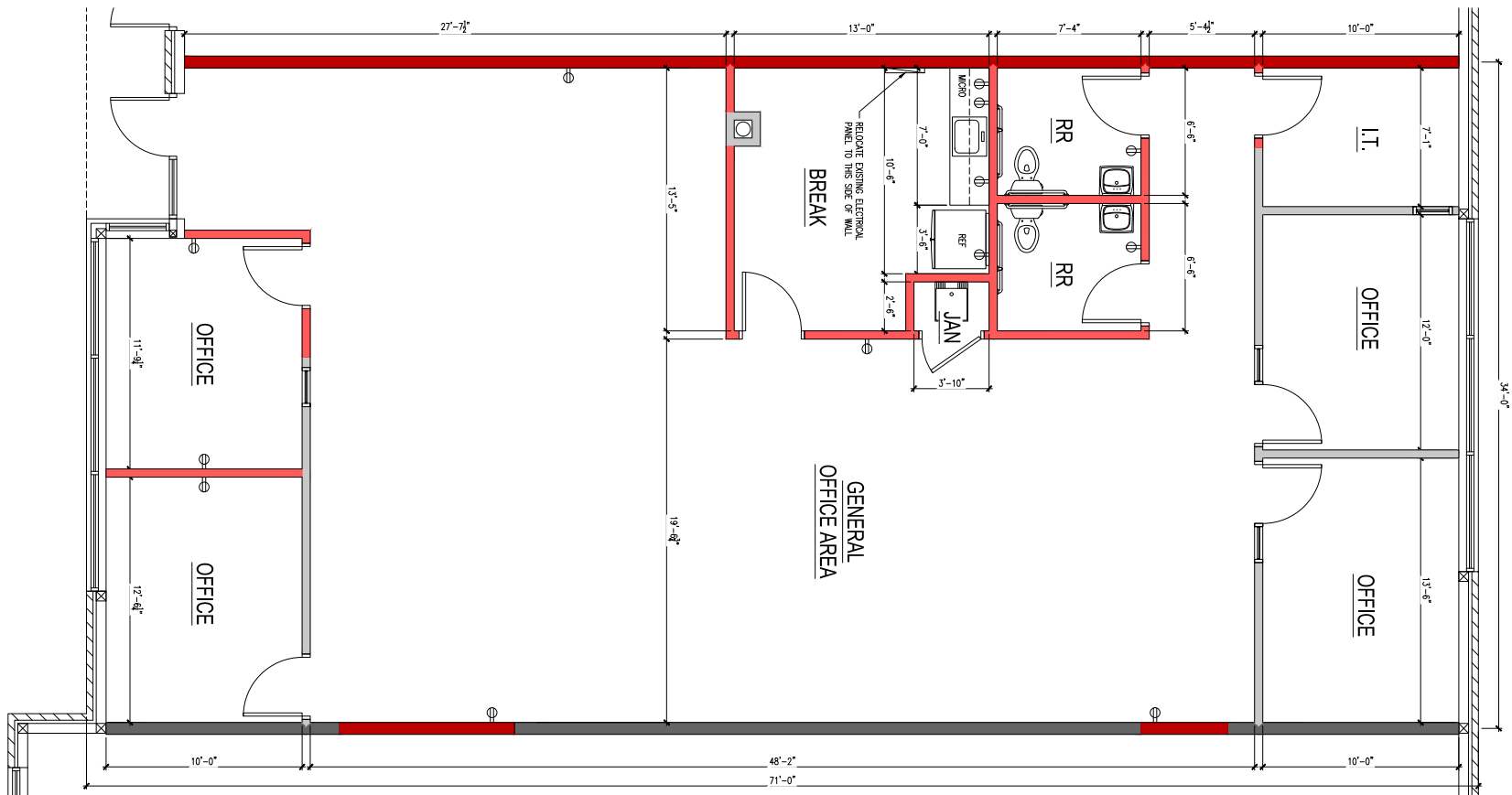
Total SF Available:
2,414 SF

Private offices (4), break area, with restrooms



**CLICK TO VIEW
VIRTUAL TOUR**

Note: This space plan is subject to existing field conditions. This drawing is proprietary and the exclusive property of St. John Properties, Inc. Any duplications, distribution, or other unauthorized use is strictly prohibited.





DIRECT-ENTRY SUITES FROM EXTERIOR WITHOUT SHARED COMMON AREAS

Madison East Business Center

South Biltmore Lane at Eastpark Boulevard

Madison, WI 53718

About The Property

Madison East Business Center consists of four single story office buildings totaling 111,075 square feet designed within a campus-style setting. The center is located within American Center Business Park and is highly visible.

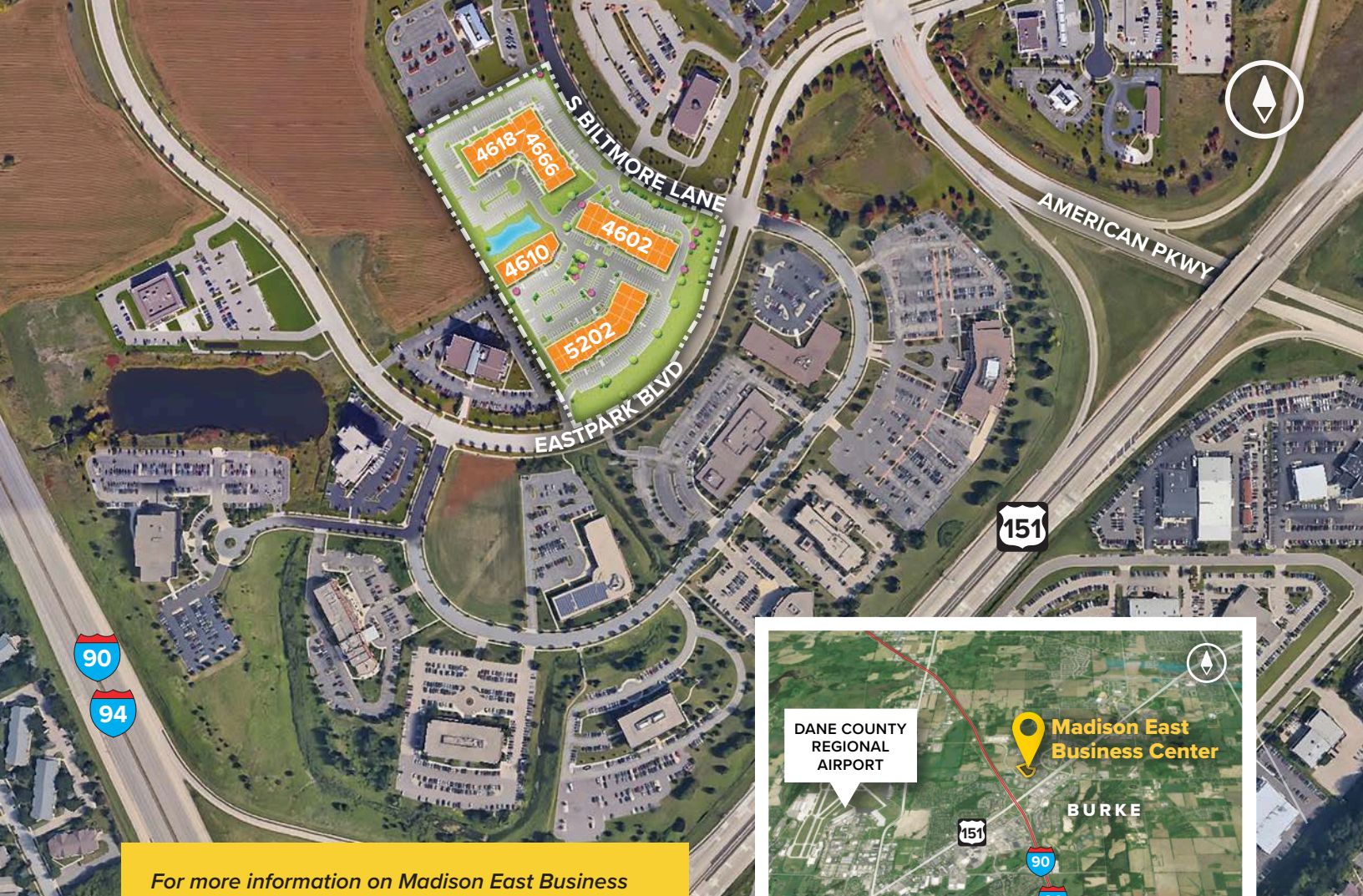
Single-Story Office/Retail Buildings

4602 South Biltmore Lane	26,950 SF
4610 South Biltmore Lane	14,310 SF
4618-4666 South Biltmore Lane	39,290 SF
5202 Eastpark Boulevard	30,525 SF

Single-Story Office/Retail Specifications

Parking	4.2 per 1,000 SF
Heat	Natural Gas
Roof	EPDM rubber
Exterior Walls	Masonry
Zoning	SEC





For more information on Madison East Business Center, visit: sjpi.com/madisoneast



Contact Us

For additional leasing information or to schedule a tour, contact:

Greg Fax

Regional Partner, Wisconsin

gfax@sjpi.com | 262.524.0100

Wisconsin Regional Office:

2000 Pewaukee Road | Suite A
Waukesha, WI 53188

262.524.0100

SJPI.COM/WISCONSIN



MD • CO • FL • LA • NC • NV • PA • TX • UT • VA • WI



About St. John Properties

St. John Properties Wisconsin owns and is developing more than 1.7 million square feet of commercial space across 16 business communities in Wisconsin.

St. John Properties, Inc. is one of the nation's largest and most successful privately held commercial real estate firms. The company owns, manages, and has developed office, flex/research and development, warehouse, retail, and residential space nationwide.

Connect with us [@stjohnprop](https://twitter.com/stjohnprop)



This information contained in this publication has been obtained from sources believed to be reliable. St. John Properties makes no guarantee, warranty or representation about this information. Any projections, opinions, assumptions or estimates used here are for example only and do not represent the current or future performance of the property. Interested parties should conduct an independent investigation to determine whether the property suits their needs. REV 08/23