



## Johnson Place

4700 Dale St, McFarland, WI 53558



**Ken Berg**

Johnson & Hellekson Real Estate LLC  
200 E Main St, Suite 100, Watertown, WI 53094  
[ken@jhrellc.com](mailto:ken@jhrellc.com)  
(920) 988-3249

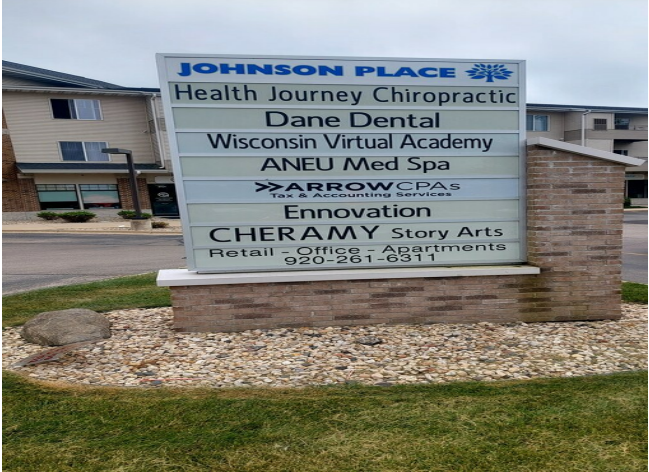


# Johnson Place

\$16.00 /SF/YR

Retail strip center with Highway 51 visibility. This strip center has ample parking and easy access. Residential housing above this center adds to the retail traffic....

- Cant Miss Just Off Hwy 51 & Attractively Situated At Elevated Grade To Show Off Several Successful Businesses Within The Johnson Place Plaza

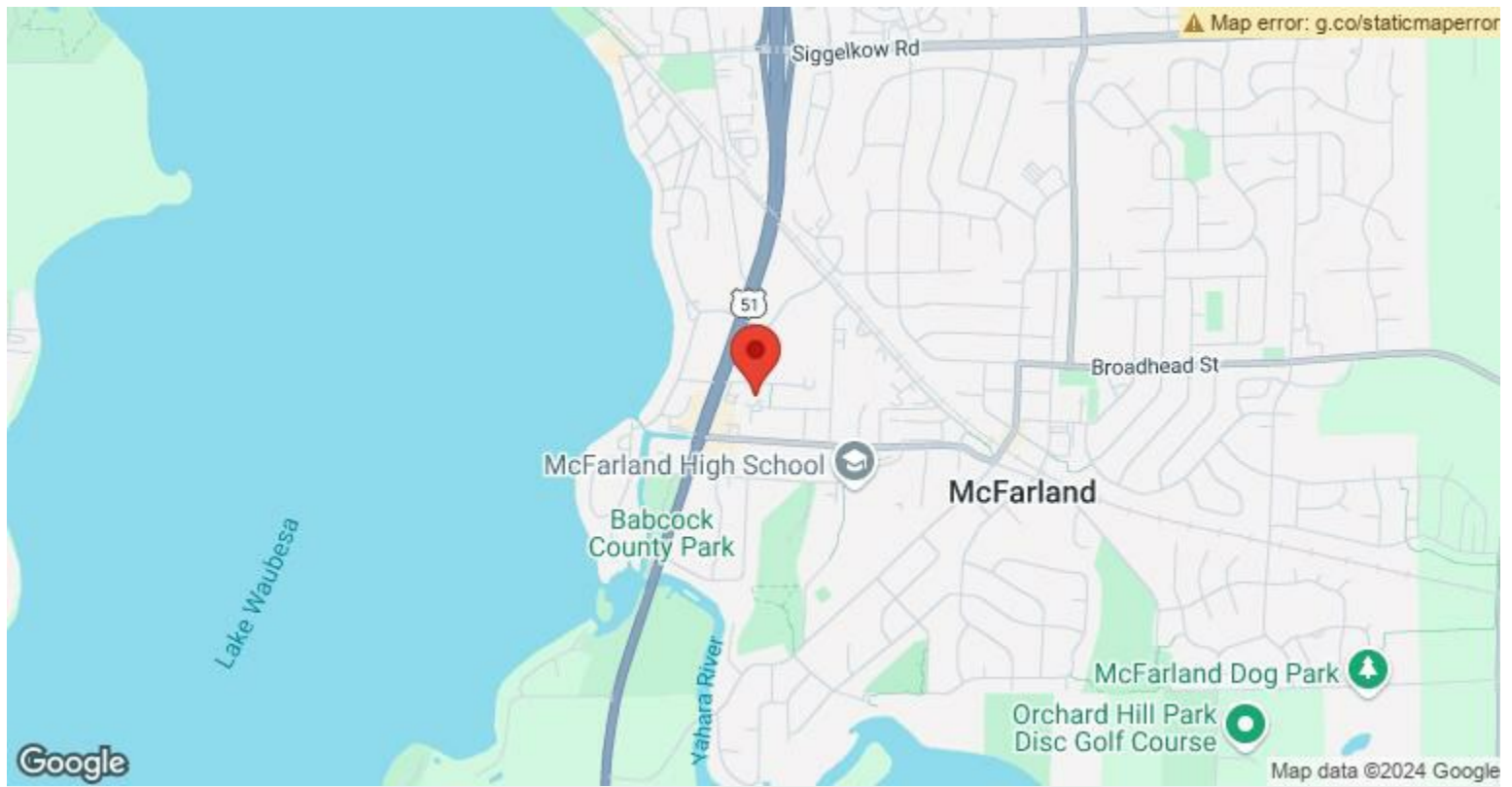


Rental Rate:	\$16.00 /SF/YR
Min. Divisible:	1,200 SF
Property Type:	Retail
Property Subtype:	Storefront Retail/Residential
Gross Leasable Area:	20,000 SF
Year Built:	2004
Walk Score ®:	65 (Somewhat Walkable)
Rental Rate Mo:	\$1.33 /SF/MO

**1st Floor Ste 4709**

Space Available	1,200 - 2,571 SF
Rental Rate	\$16.00 /SF/YR
Date Available	November 30, 2024
Service Type	Modified Gross
Built Out As	Professional Services
Space Type	Relet
Space Use	Office
Lease Term	3 - 5 Years

Ideal suite for standard or professional office applications with excellent adjoining tenants to compliment your business venture. Great location within this 22,000 sq ft commercial plaza to let people know where you are and affordable, attractive lease terms that provide an excellent opportunity for success. This Plaza is situated right next to the Pick & Save which will may you with prospective customers without effort on your part. Perfect for real estate or other office uses. Available as of December 1st, so check it out before it is too late by calling Ken for an inside look at 920-988-3249 or at his office in Watertown @ 920-261-6311.



## 4700 Dale St, McFarland, WI 53558

Retail strip center with Highway 51 visibility. This strip center has ample parking and easy access. Residential housing above this center adds to the retail traffic.



## Property Photos



20240829\_123638



20240829\_123425

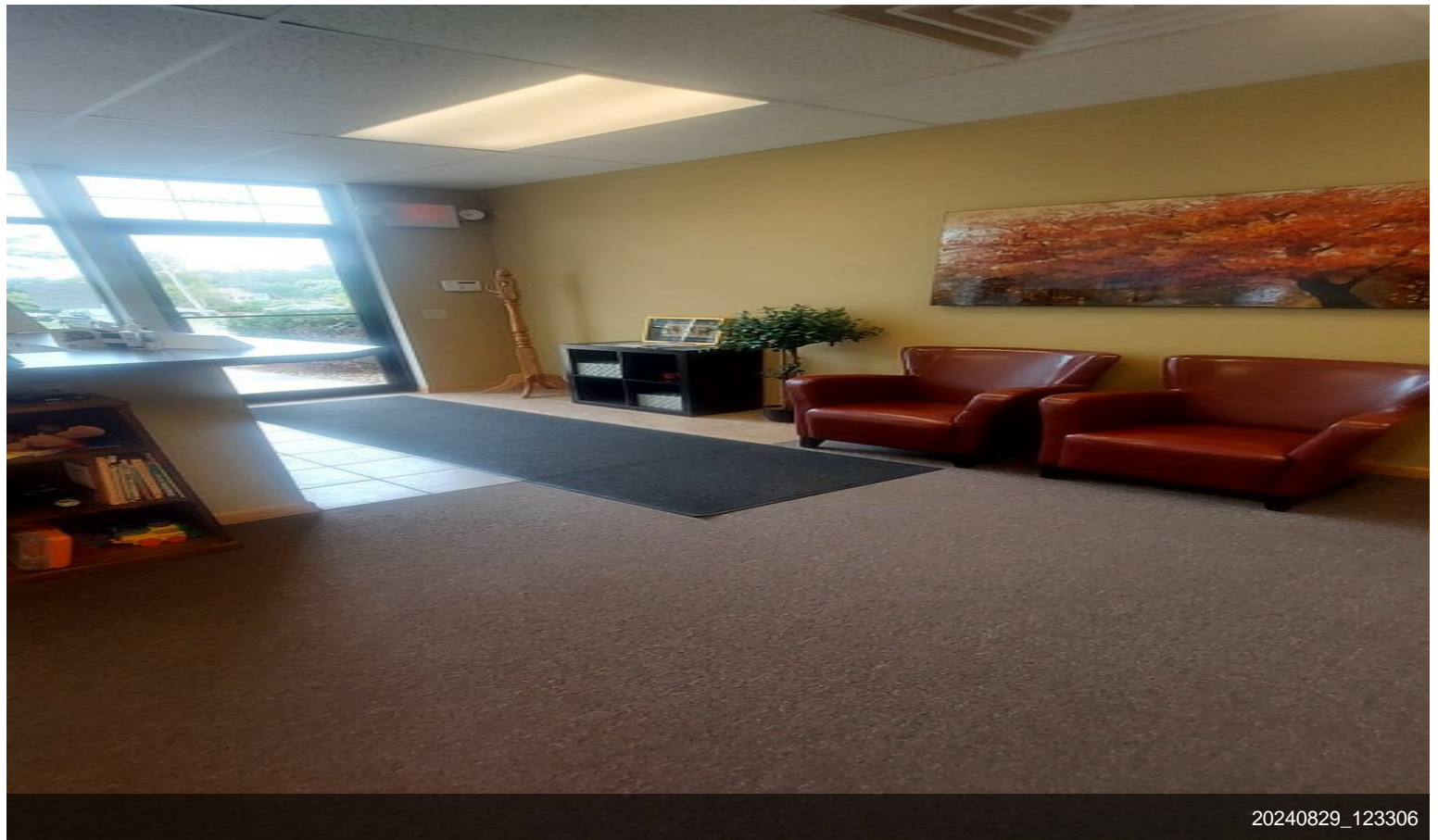


## Property Photos



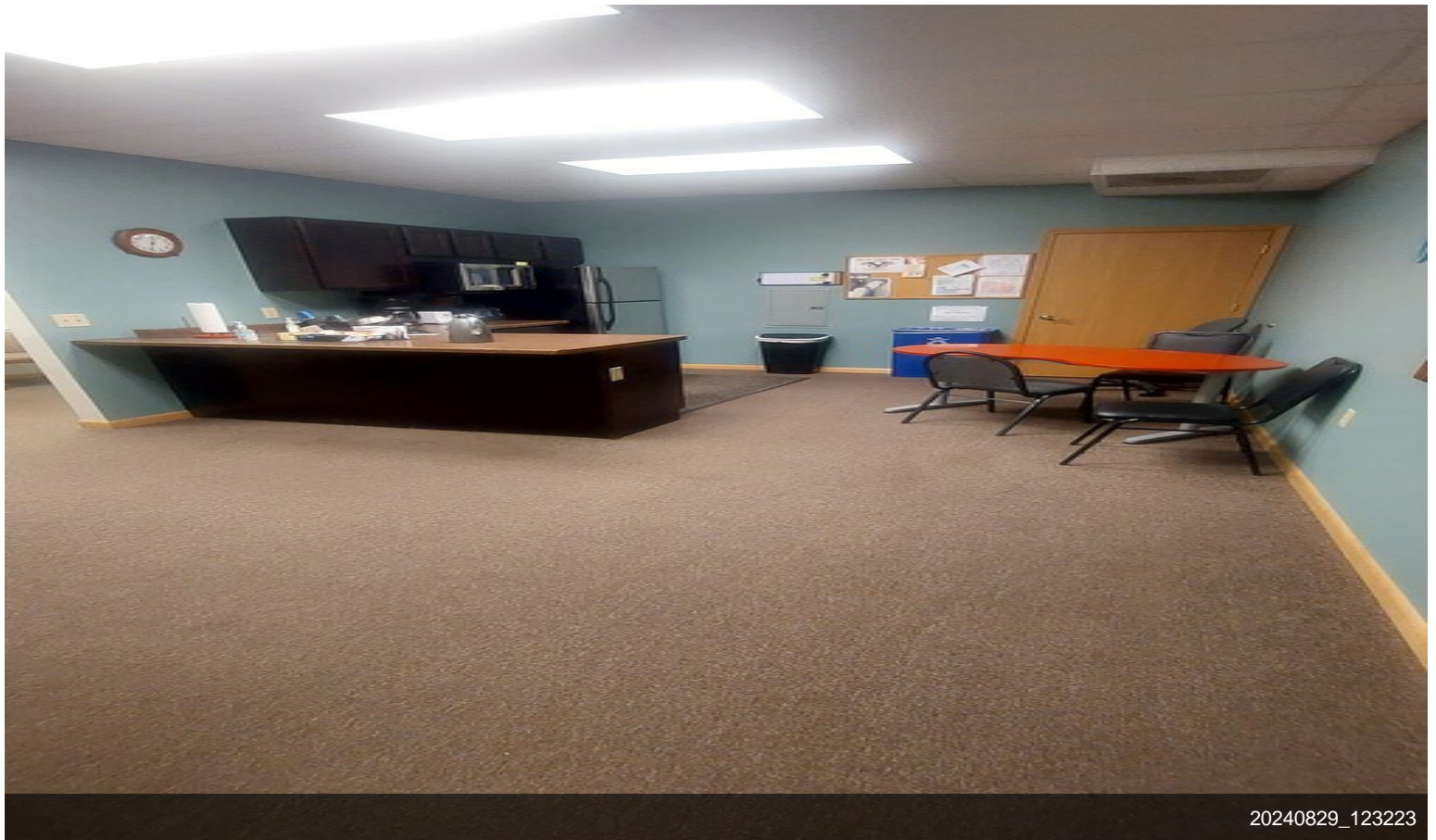


## Property Photos



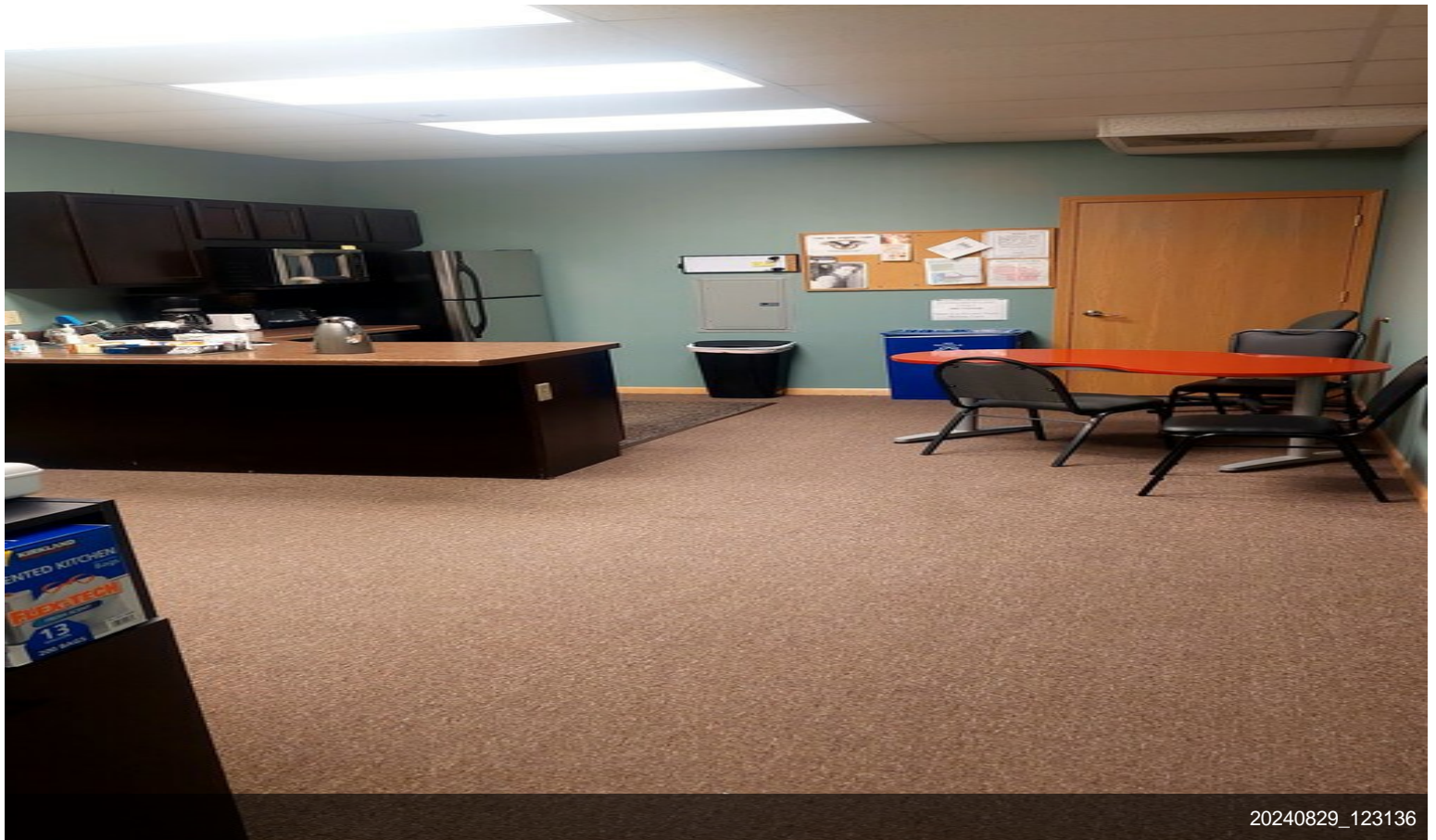
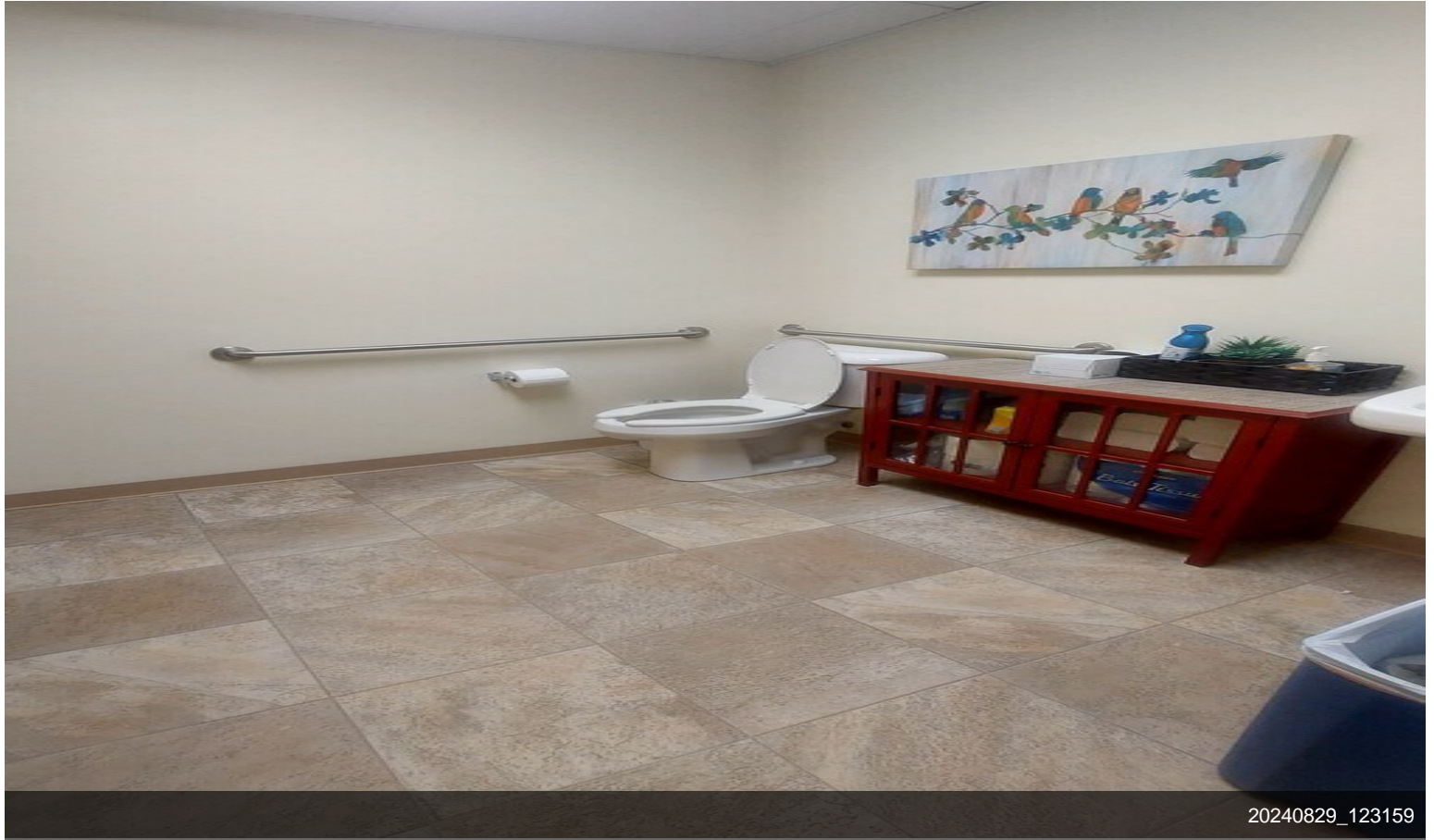


## Property Photos





## Property Photos

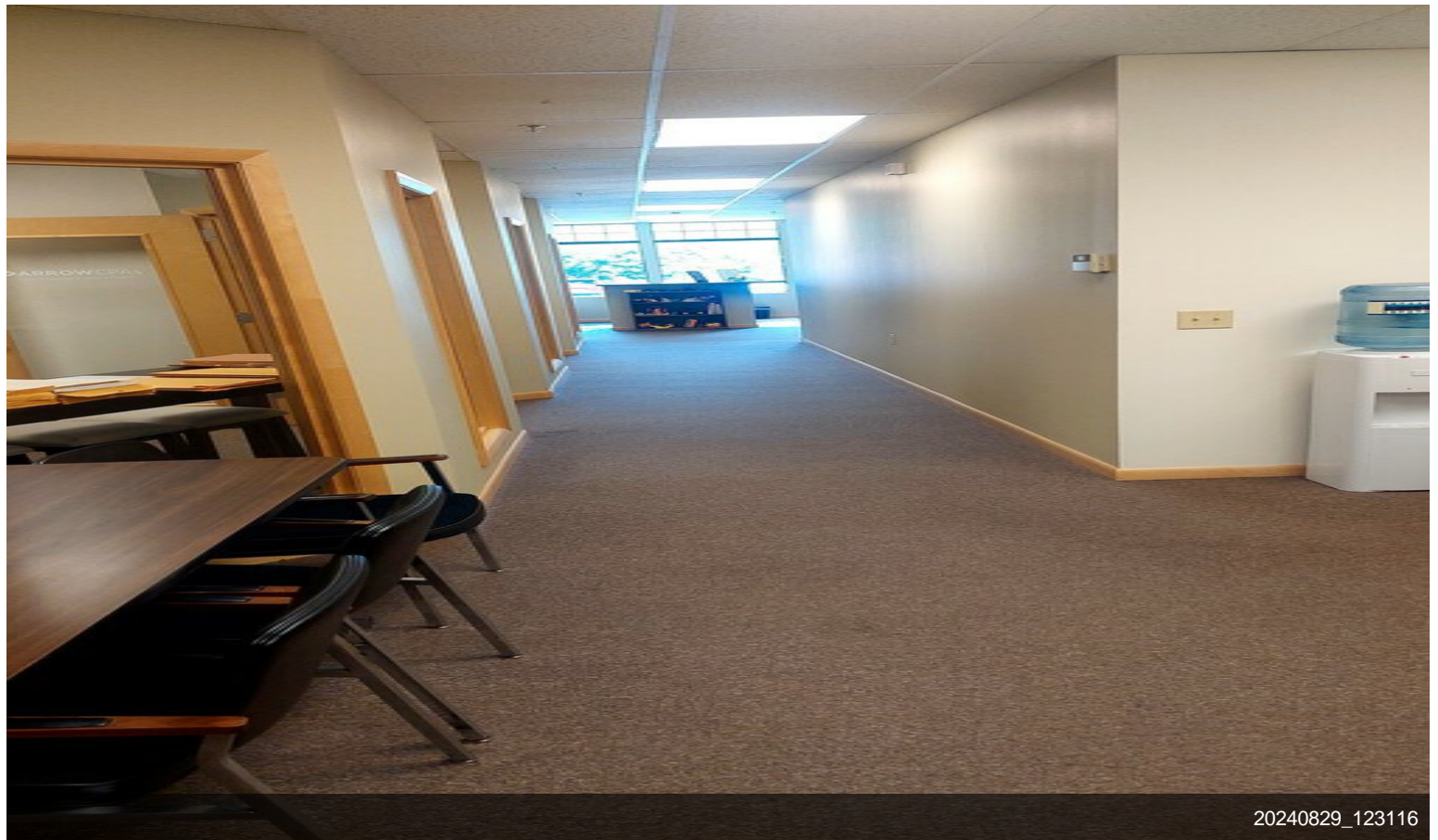




## Property Photos



20240829\_123123



20240829\_123116



## Property Photos



Building Photo



Building Photo



## Property Photos



Building Photo