

Commercial Space For Lease

275 Bruce St. Suite #300 Verona, WI



Office/warehouse space located just off Highway 18/Verona Rd. On the main level there is an open front office area, 1 office in back, break area/kitchen, one bathroom, access to back warehouse/overhead door and on the 2nd floor there are 2 office spaces and storage area. Plenty of parking onsite and exterior signage available.

Rent	\$2,300/Month + \$200/mo CAM fee
Square Feet (approx.)	2,124 sq.ft. office space & 983 sq.ft. warehouse space
Utilities Paid By Resident	Gas, Electric, & CAMs

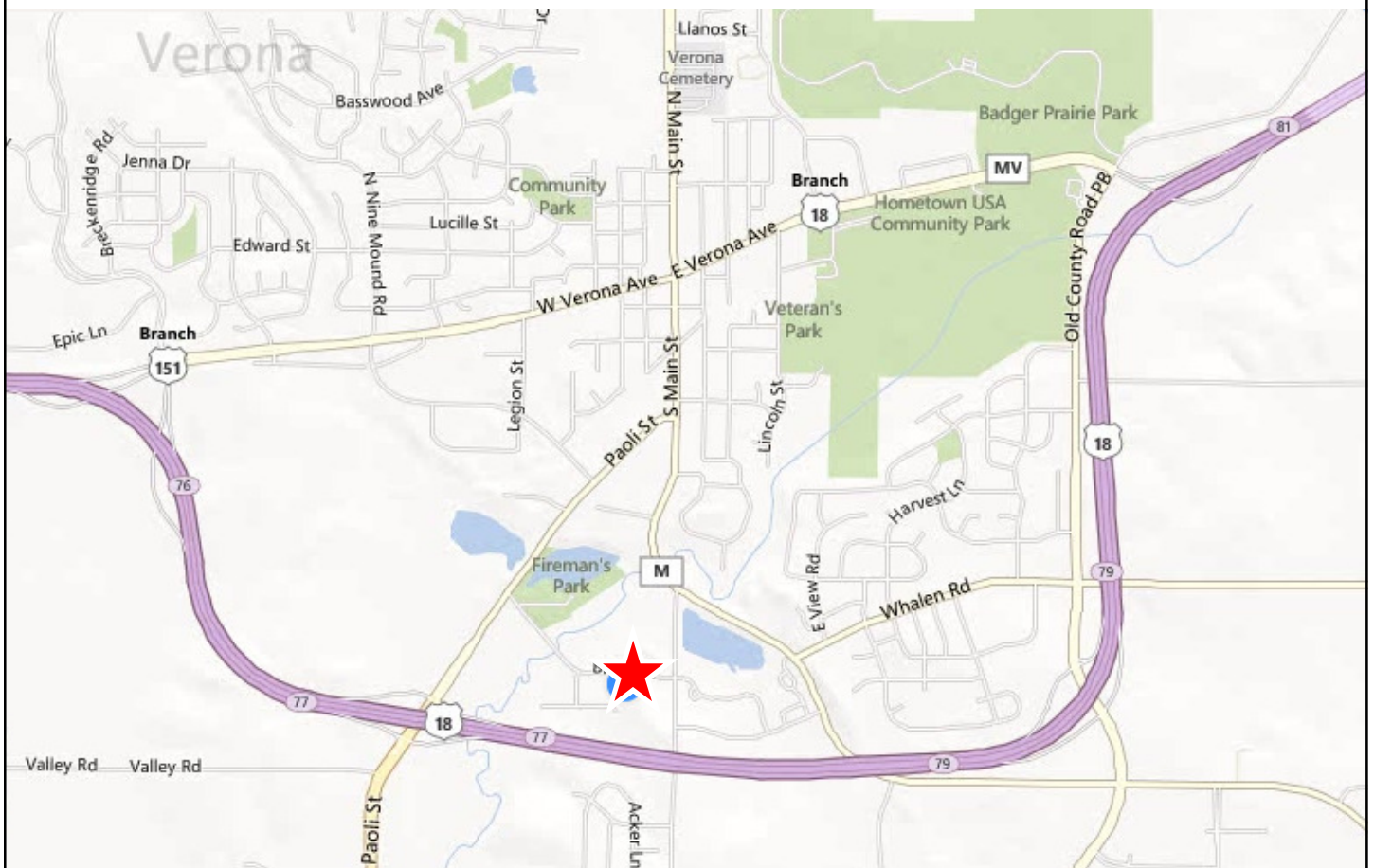


James Stoppie - jim@madisonproperty.com

Direct Line (608) 268-4912 - Office (608) 251-8777 - Fax (608) 255-9656

Tony Xiong - tony@madisonproperty.com - Direct Line (608) 268-4987

www.madisonproperty.com/realestate

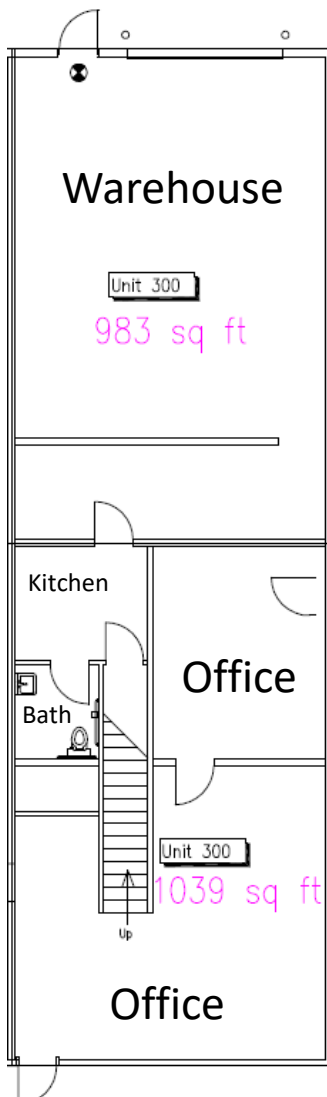
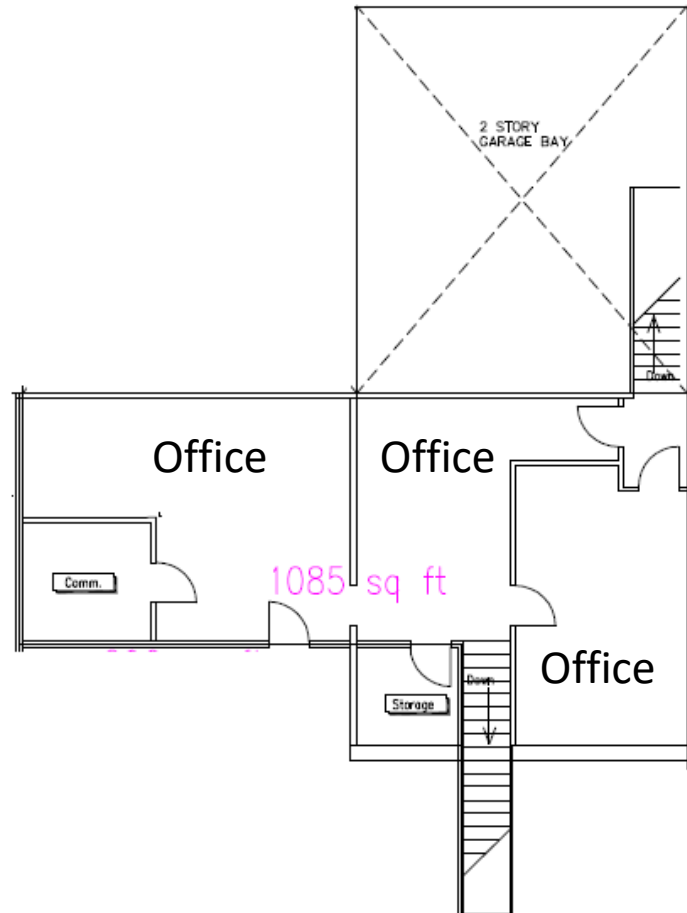


275 Bruce St. Suite #300 Verona, WI

Exterior Photos



2nd Floor Office



1st Floor Office & Warehouse

2,124 sq.ft. total office space
983 sq.ft. total warehouse space

Warehouse Space



1st Floor Photos



2nd Floor Photos



Site Plan

