

6,857 RSF Available

Office space on Capitol Square



US Bank Plaza

1 S. Pinckney St., Madison, WI

This exceptional Class A, 9-story, 381,923 SF office building is conveniently located in Downtown Madison directly on Capitol Square.

Contact

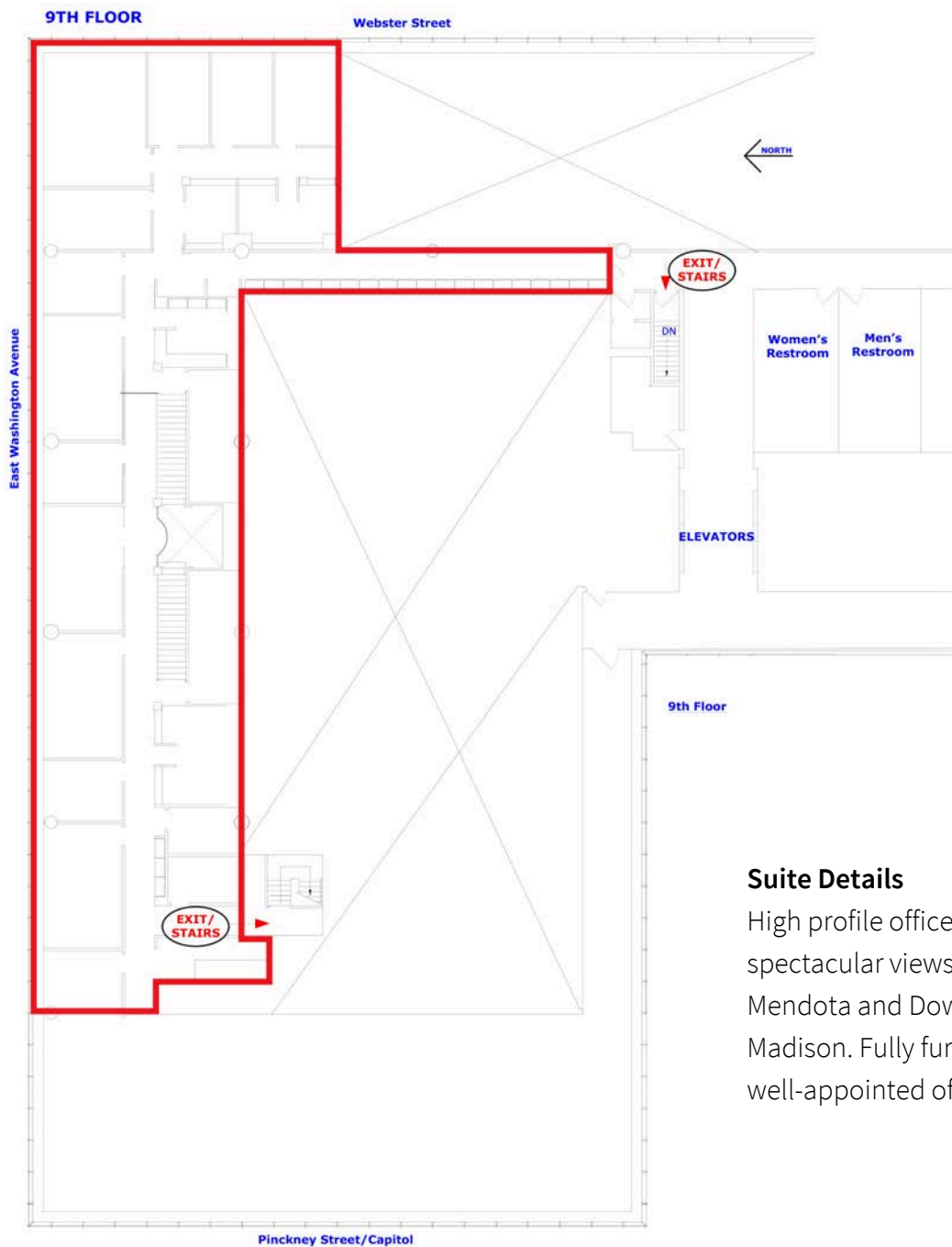
Michael Streit

Executive Vice President

+1 414 944 2104

michael.streit@jll.com

9th Floor Sublease



Suite Details

High profile office space with spectacular views of Lake Mendota and Downtown Madison. Fully furnished with well-appointed offices on glass.

6,857 RSF

Approx. size of sublease

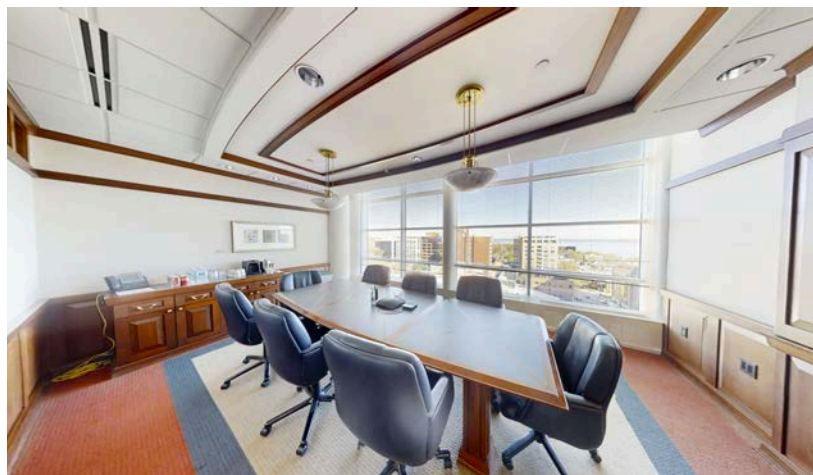
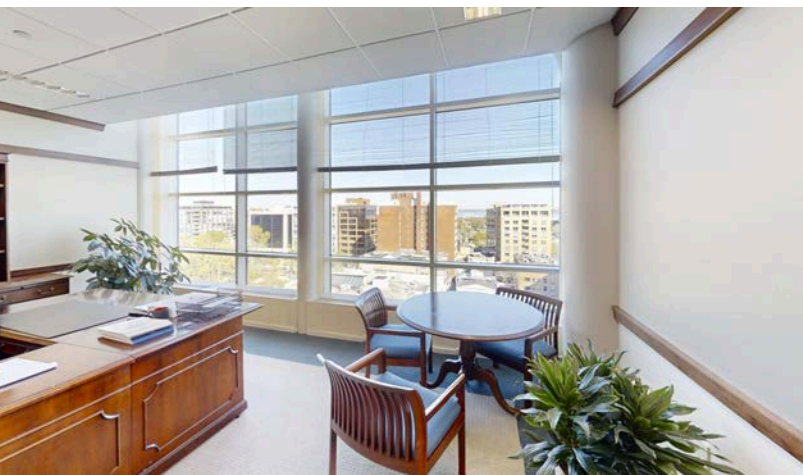
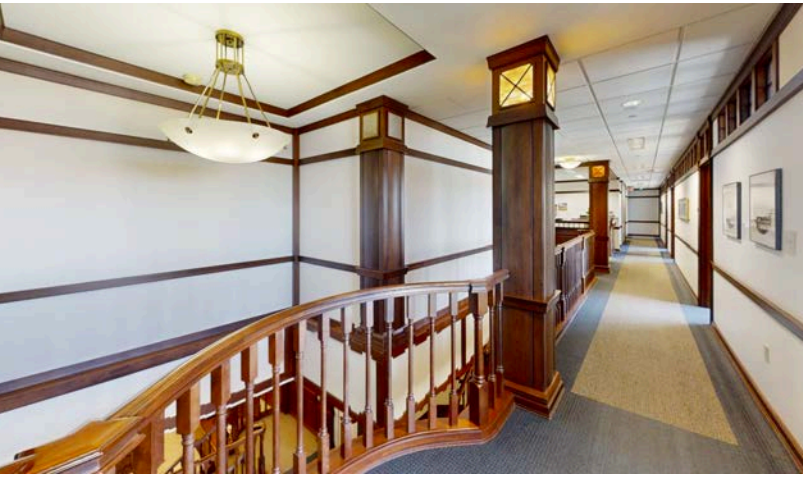
Flexible

Sublease expiration

Negotiable

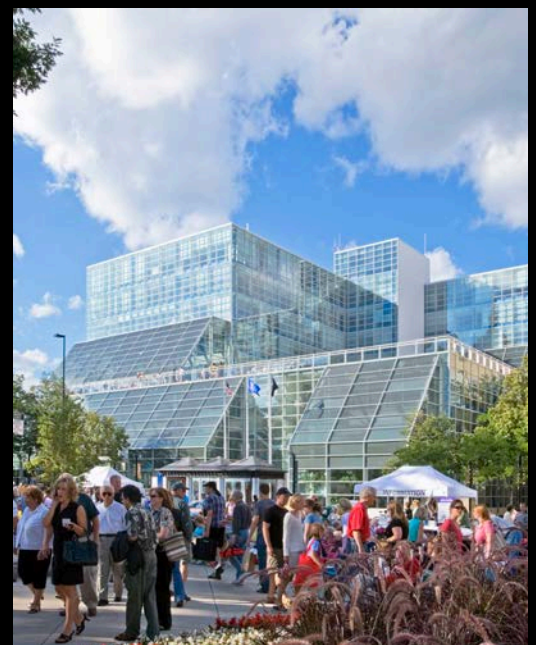
Sublease rate / SF

9th Floor Sublease Photos



US Bank Plaza

US Bank Plaza is one of downtown Madison's premier mixed use office properties, containing a variety of market leading amenities for all tenants in the building. The property contains an underground parking garage with direct elevator access up to all floors. The ground floor contains a variety of retail tenants that provide dining and entertaining opportunities. These tenants include: Le'Toile, Graze, Gooseberry and Capitol Square Dental. The lower level provides locker and shower rooms for tenants' use. Secured bike parking is available on the first level of the parking garage. A large, outdoor roof terrace that was recently renovated is located on the 4th floor overlooking the Capitol Square and is available to all tenants in the property.



1 S. Pinckney St., Madison, WI

Experience the convenience of being within walking distance to exceptional and vibrant dining options, while enjoying the dynamic atmosphere of the Capitol Square, known for its popular outdoor farmer's market. With its bicycle-friendly environment, this location offers a seamless blend of accessibility and a lively urban experience.

- 0.3 miles to E. Washington Ave.
- 3.5 miles to US-18
- 6 miles to I-90/94 interchange
- 77 miles to Milwaukee

Elevate your business with this prestigious Class A space for sublease, located conveniently off of US-14.

