

1200 Springdale Street, Mount Horeb, WI 53572



for lease

Mount Horeb Retail Space of 2,500 - 11,375 Sq.Ft. Available Now!

A retail spaces in this size range are currently rare finds in Mount Horeb!



[Link to View Interior of 1260 Springdale!](#)

Mount Horeb is a growing community approximately 18 miles from Madison. Close enough to access everything Madison has to offer while still having it's own unique Scandinavian feel. The Main Street "Trollway," is decorated with life-sized, carved wooden trolls, the classic creatures of Scandinavian folklore. Located at one of the primary gateways into Mount Horeb, **1210 Springdale Street & 1260 Springdale Street**, respectively offer 2,500 Sq. Ft & 11,375 Sq. Ft. in a retail center with a mix of local & National tenants, such as Auto Value Parts Stores & Viking Ace Hardware!

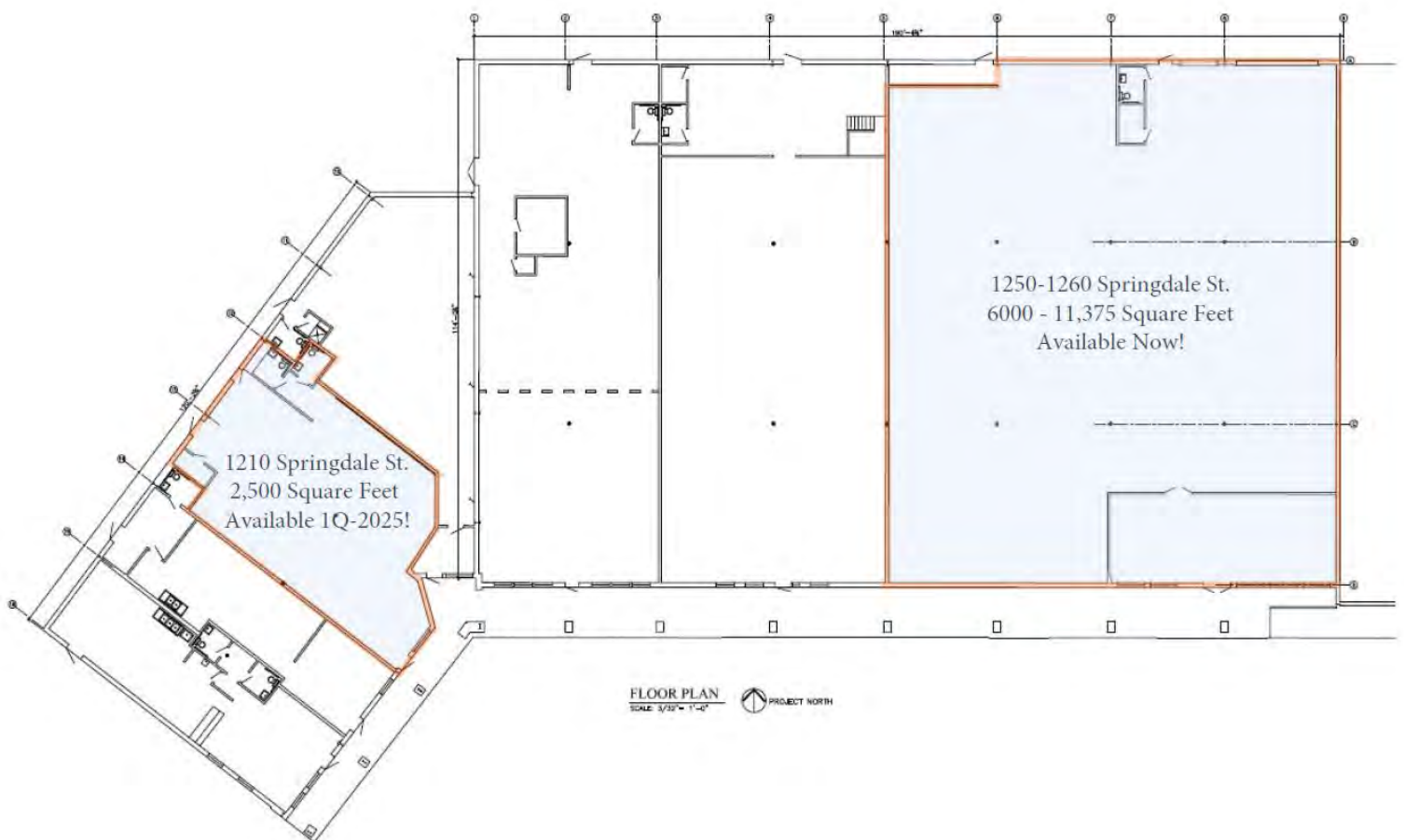


Janine Punzel, CCIM | jkpunzel@360cres.com | 608.212.8336 (c)
701 E. Washington Avenue, Suite LL2, Madison, WI 53703 | 608.807.0660 (o)



1200 Springdale Street, Mount Horeb, WI 53572

1210 & 1250-1260 Springdale Street



Janine Punzel, CCIM | jkpunzel@360cres.com | 608.212.8336 (c)
701 E. Washington Avenue, Suite LL2, Madison, WI 53703 | 608.807.0660 (o)



1200 Springdale Street, Mount Horeb, WI 53572

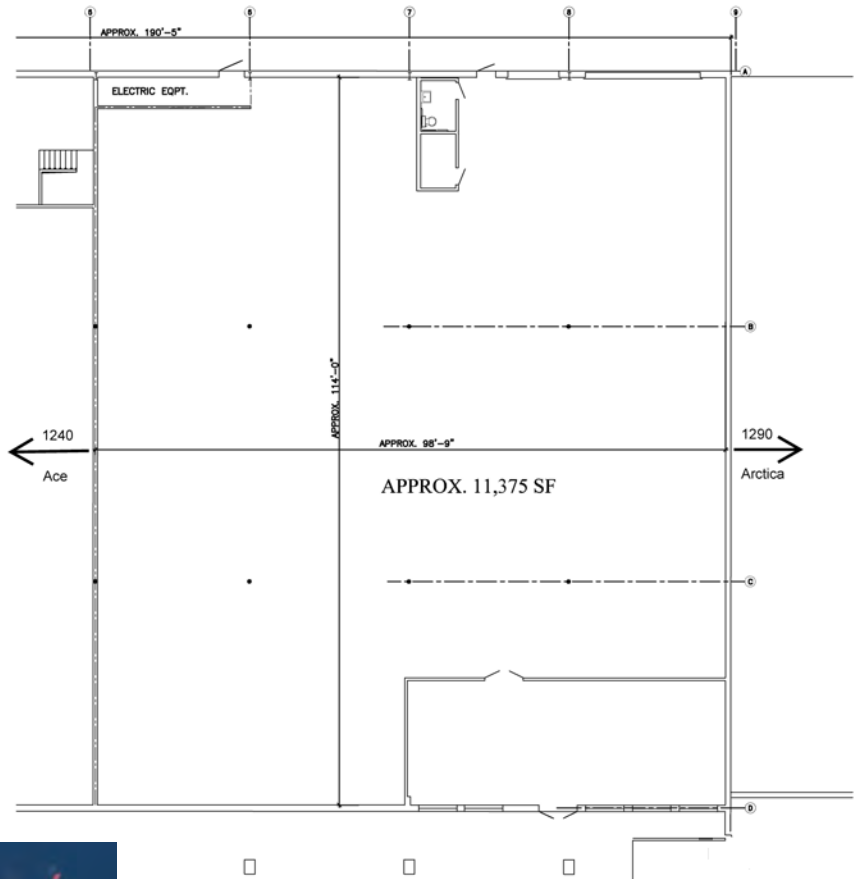
Basic Lease Terms:

- Lease Term of 5+ Years
- Base Rent is \$12 - \$15/Sq.Ft./Yr
- CAM Fees approx. \$3.50/SF
- Separately Metered Utilities

New Owner - New Improvements!

- 2024 New 2-sided, illuminated monument sign
- 2023 Facade renovations complete
- 2023 Parking lot sealed & striped
- 2022 - New roof & gutters on entire building
- HVAC units in 1260 Springdale Street were replaced or reconditioned in 2022
- This white box space is a blank canvas ready to be built out to tenant's specific requirements.

1250 -1260 Springdale Street
11,375 Sq.Ft. divisible to 6000 Sq.Ft.



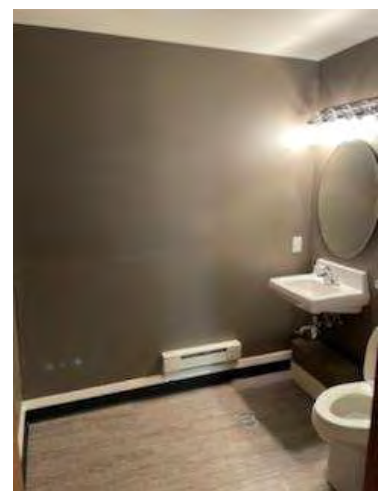
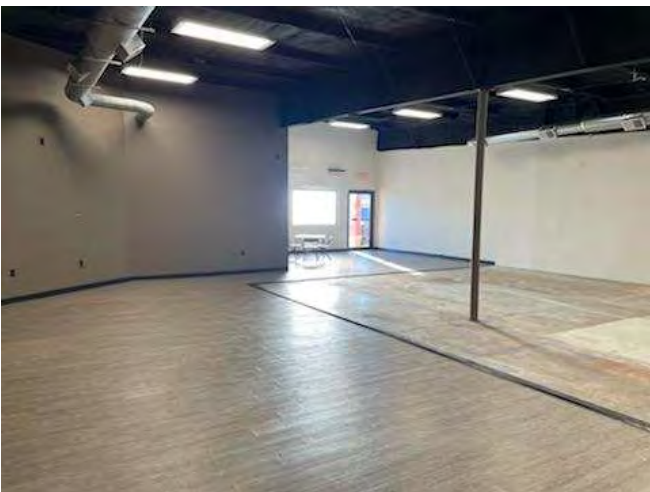
Janine Punzel, CCIM | jkpunzel@360cres.com | 608.212.8336 (c)
701 E. Washington Avenue, Suite LL2, Madison, WI 53703 | 608.807.0660 (o)



1200 Springdale Street, Mount Horeb, WI 53572



**1210
INTERIOR
PHOTOS**



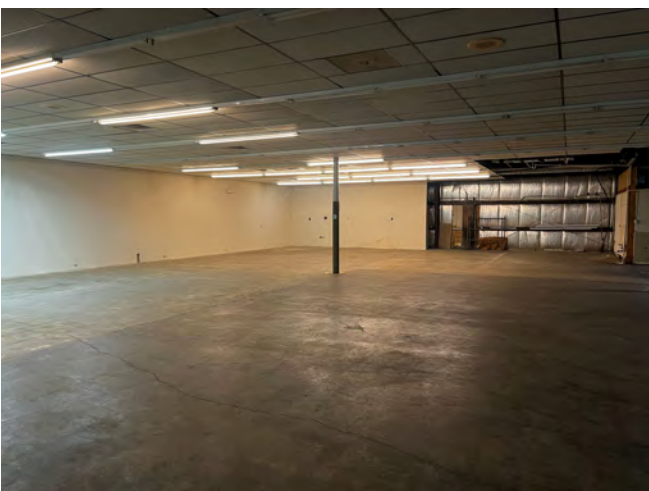
Janine Punzel, CCIM | jkpunzel@360cres.com | 608.212.8336 (c)
701 E. Washington Avenue, Suite LL2, Madison, WI 53703 | 608.807.0660 (o)



1200 Springdale Street, Mount Horeb, WI 53572



1260
INTERIOR
PHOTOS



Janine Punzel, CCIM | jkpunzel@360cres.com | 608.212.8336 (c)
701 E. Washington Avenue, Suite LL2, Madison, WI 53703 | 608.807.0660 (o)



1200 Springdale Street, Mount Horeb, WI 53572

Mount Horeb Trade Area Information

Total Population

10,722

Source - 2022 Key Demographic Indicators
(Esri)

Median Age

39.7

Source - 2022 Age: 5 Year Increments (Esri)

Median Household Income

\$95,087

Source - 2022 Income (Esri)

WisDOT Annual Average Daily Traffic Counts:

Springdale Street, Mount Horeb, WI: 9,700 AADT
(AADT Date: 6/4/2018)

USH 18/USH 151 between CTH JG & CTH ID, Mount Horeb, WI: 18,200 AADT
(AADT Date: 4/5/2022)



The Village of Mount Horeb has a population of 7,712 and a population of 10,722 in its trade area. Its quaint downtown includes specialty shops, antique stores and brewpubs and other popular restaurants. Mount Horeb is family-friendly and offers outdoor spaces and a wide variety of activities. Pick your own apples, take a scenic chairlift at Tyrol Basin, taste locally produced beer, wine and hard cider. Hike beautiful trails or head underground for some spelunking at Cave of the Mounds, and learn all about the Driftless Region and greater Southwest Wisconsin at the Driftless Historium, an award-winning history museum. Explore Mount Horeb's shops and restaurants and unique small town charm with a quirky twist: <https://trollway.com/>



Janine Punzel, CCIM | jkpunzel@360cres.com | 608.212.8336 (c)

701 E. Washington Avenue, Suite LL2, Madison, WI 53703 | 608.807.0660 (o)

DISCLOSURE TO NON-RESIDENTIAL CUSTOMERS

1 Prior to negotiating on your behalf the brokerage firm, or an agent associated with the firm, must provide you the
2 following disclosure statement:

3 **DISCLOSURE TO CUSTOMERS** You are a customer of the brokerage firm (hereinafter Firm). The Firm is either an agent
4 of another party in the transaction or a subagent of another firm that is the agent of another party in the transaction. A
5 broker or a salesperson acting on behalf of the Firm may provide brokerage services to you. Whenever the Firm is
6 providing brokerage services to you, the Firm and its brokers and salespersons (hereinafter Agents) owe you, the
7 customer, the following duties:

- 8 (a) The duty to provide brokerage services to you fairly and honestly.
- 9 (b) The duty to exercise reasonable skill and care in providing brokerage services to you.
- 10 (c) The duty to provide you with accurate information about market conditions within a reasonable time if you request
11 it, unless disclosure of the information is prohibited by law.
- 12 (d) The duty to disclose to you in writing certain Material Adverse Facts about a property, unless disclosure of the
13 information is prohibited by law (see lines 42-51).
- 14 (e) The duty to protect your confidentiality. Unless the law requires it, the Firm and its Agents will not disclose your
15 confidential information or the confidential information of other parties (see lines 23-41).
- 16 (f) The duty to safeguard trust funds and other property held by the Firm or its Agents.
- 17 (g) The duty, when negotiating, to present contract proposals in an objective and unbiased manner and disclose the
18 advantages and disadvantages of the proposals.

19 Please review this information carefully. An Agent of the Firm can answer your questions about brokerage services,
20 but if you need legal advice, tax advice, or a professional home inspection, contact an attorney, tax advisor, or home
21 inspector. This disclosure is required by section 452.135 of the Wisconsin statutes and is for information only. It is a
22 plain-language summary of the duties owed to a customer under section 452.133(1) of the Wisconsin statutes.

23 **CONFIDENTIALITY NOTICE TO CUSTOMERS** The Firm and its Agents will keep confidential any information given to the
24 Firm or its Agents in confidence, or any information obtained by the Firm and its Agents that a reasonable person
25 would want to be kept confidential, unless the information must be disclosed by law or you authorize the Firm to
26 disclose particular information. The Firm and its Agents shall continue to keep the information confidential after the
27 Firm is no longer providing brokerage services to you.

28 The following information is required to be disclosed by law:

- 29 1. Material Adverse Facts, as defined in Wis. Stat. § 452.01(5g) (see lines 42-51).
- 30 2. Any facts known by the Firm or its Agents that contradict any information included in a written inspection
31 report on the property or real estate that is the subject of the transaction.

32 To ensure that the Firm and its Agents are aware of what specific information you consider confidential, you may
33 list that information below (see lines 35-41) or provide that information to the Firm or its Agents by other means. At a
34 later time, you may also provide the Firm or its Agents with other Information you consider to be confidential.

35 **CONFIDENTIAL INFORMATION:** _____
36 _____
37 _____

38 **NON-CONFIDENTIAL INFORMATION** (the following information may be disclosed by the Firm and its Agents): _____
39 _____
40 _____

41 _____ (Insert information you authorize to be disclosed, such as financial qualification information.)

42 **DEFINITION OF MATERIAL ADVERSE FACTS**

43 A "Material Adverse Fact" is defined in Wis. Stat. § 452.01(5g) as an Adverse Fact that a party indicates is of such
44 significance, or that is generally recognized by a competent licensee as being of such significance to a reasonable
45 party, that it affects or would affect the party's decision to enter into a contract or agreement concerning a transaction
46 or affects or would affect the party's decision about the terms of such a contract or agreement.

47 An "Adverse Fact" is defined in Wis. Stat. § 452.01(1e) as a condition or occurrence that a competent licensee
48 generally recognizes will significantly and adversely affect the value of the property, significantly reduce the structural
49 integrity of improvements to real estate, or present a significant health risk to occupants of the property; or information
50 that indicates that a party to a transaction is not able to or does not intend to meet his or her obligations under a
51 contract or agreement made concerning the transaction.

52 **NOTICE ABOUT SEX OFFENDER REGISTRY** You may obtain information about the sex offender registry and persons
53 registered with the registry by contacting the Wisconsin Department of Corrections on the Internet at
54 <http://www.doc.wi.gov> or by telephone at 608-240-5830.

No representation is made as to the legal validity of any provision or the adequacy of any provision in any specific transaction.
Copyright © 2016 by Wisconsin REALTORS® Association Drafted by Attorney Debra Peterson Conrad