

5,500 RSF For Sublease

Furnished office space in Madison, WI



8040 Excelsior Drive
Madison, WI 53717

Overview

This exceptional Class A office building is conveniently located near shopping, dining, and hotel accommodations, in the highly desirable Old Sauk Trails Park.

Building size	94,504 sf
----------------------	-----------

Class / Floors	A / Four (4)
-----------------------	--------------

Built	2002
--------------	------

Contact

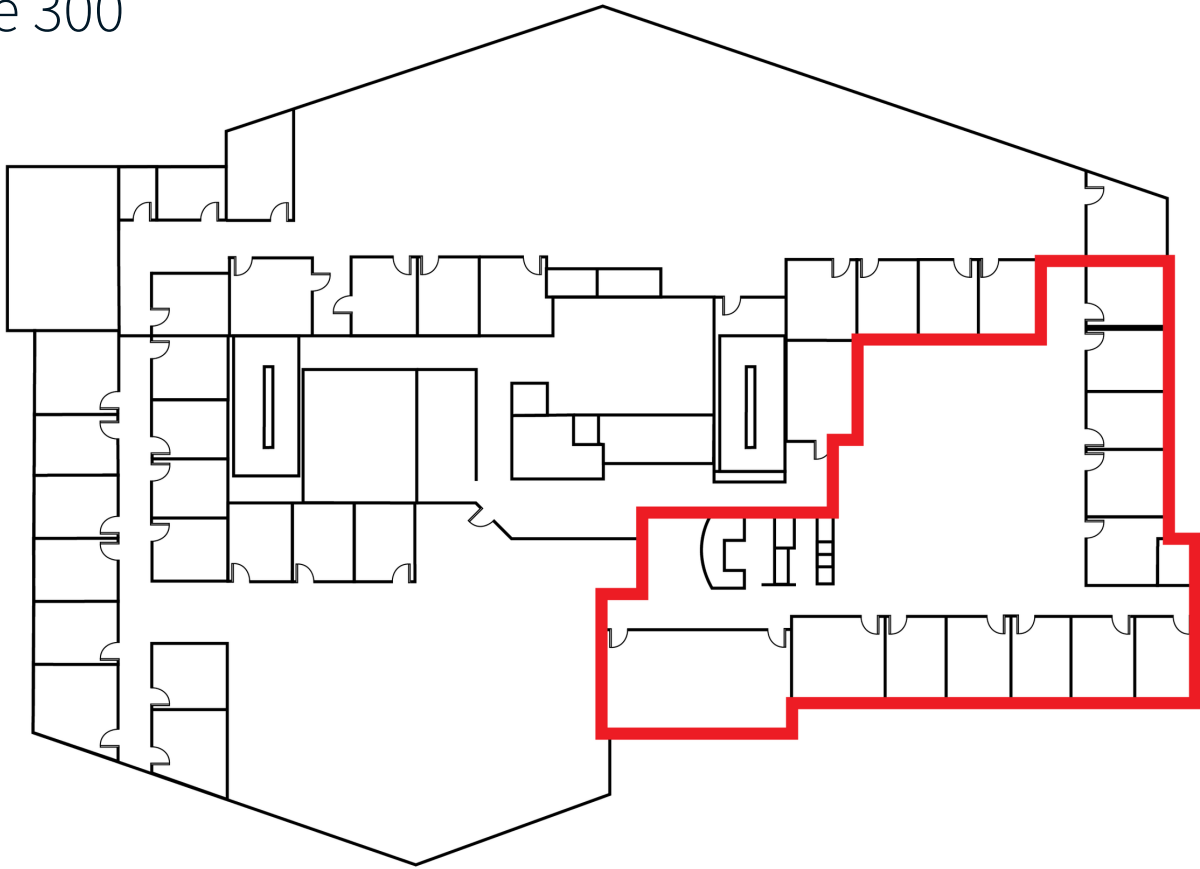
Michael Streit

Executive Vice President

+1 414 944 2104

michael.streit@jll.com

Suite 300



5,500 RSF

Size of sublease

03/31/2027

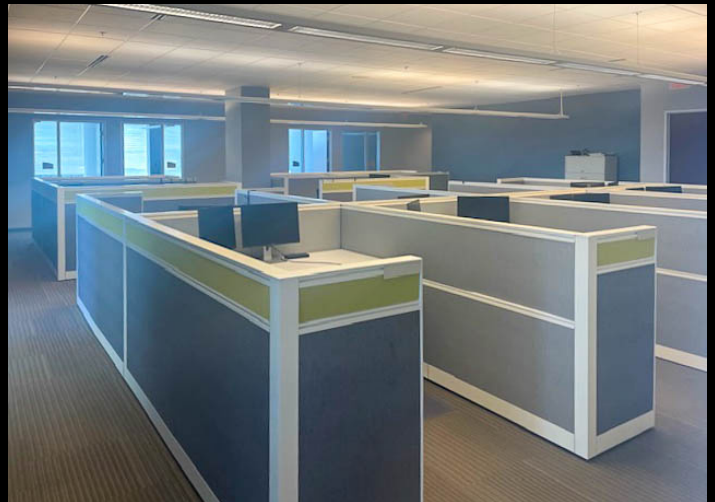
Sublease expiration

\$21.00 FSG

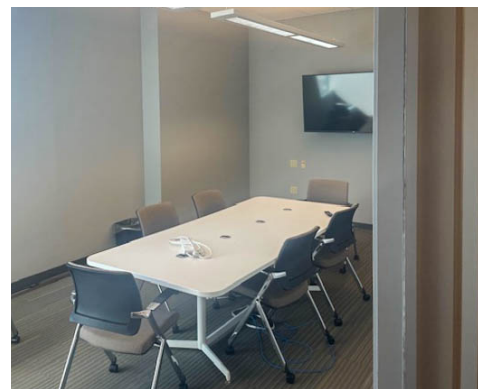
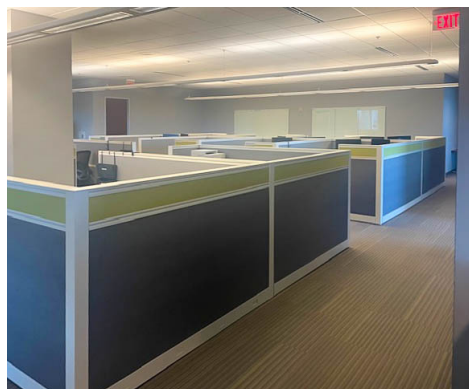
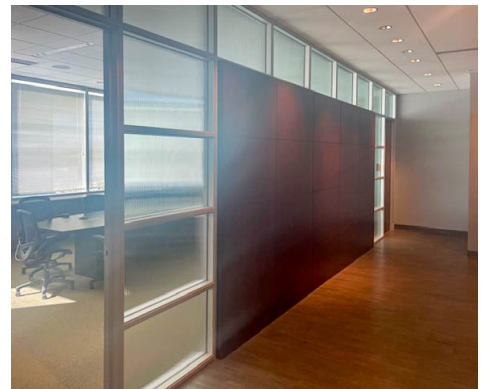
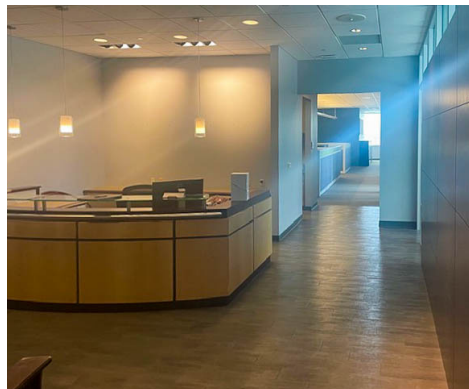
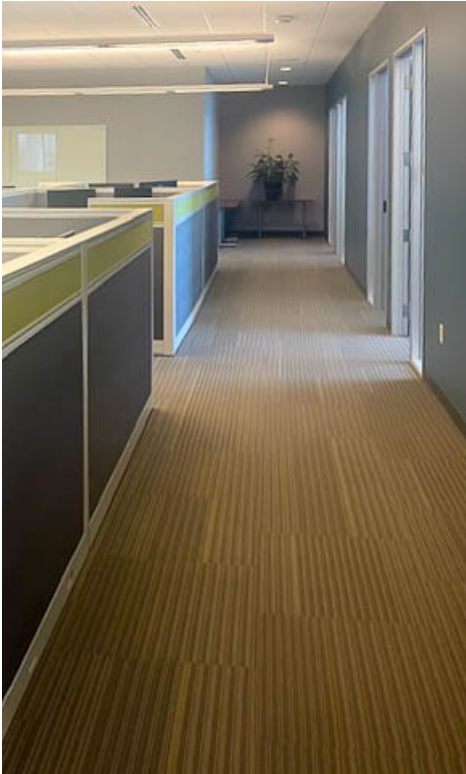
Sublease rate / SF

Sublease Highlights

- Furnished
- Elevator lobby exposure
- High-end finishes
- Wellness room
- 3 conference rooms
- 13 cubicles
- 7 private offices
- Monument signage available
- Fitness center with locker room showers



Sublease Photos



8040 Excelsior Drive Madison, WI 53717

- 0.4 miles to US-14
- 2.9 miles to Middleton
- 12.5 miles to Downtown Madison
- 90 miles to Milwaukee

Elevate your business with this prestigious Class A space for sublease, located conveniently off of US-14.

