



For Sublease

**3 Floors (Full Building)
~30,000 RSF Office Space Available**

6911 Mangrove Lane, Monona, WI 53713

Nick Hepner
T +1 414 944 2107
nick.hepner@am.jll.com

Michael Streit
T +1 414 944 2104
michael.streit@am.jll.com

Jones Lang LaSalle Brokerage, Inc. a licensed real estate broker.

Property specifications

Building size	31,000 SF
Stories	Two plus lower level
Class	A
Built / Renovated	1995 / 2018

Property highlights



Restrooms on each floor



Central location near Beltline



High image and well-appointed office space



Furnished



Easily divisible



Abundance of free parking

Sublease specs



~30,000 RSF

Total sublease availability



3,000 - 4,000 RSF

Minimum divisibility



\$14.00 MG

Sublease rate / RSF



02/28/2025

Sublease expiration

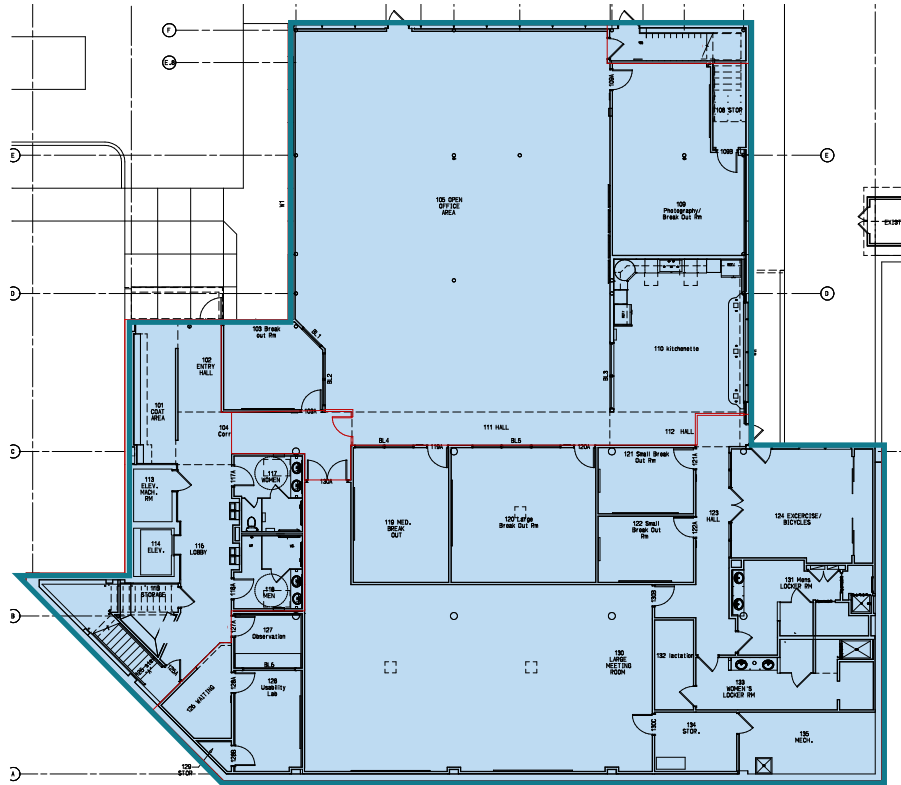


Lower Level Sublease 10,853 RSF

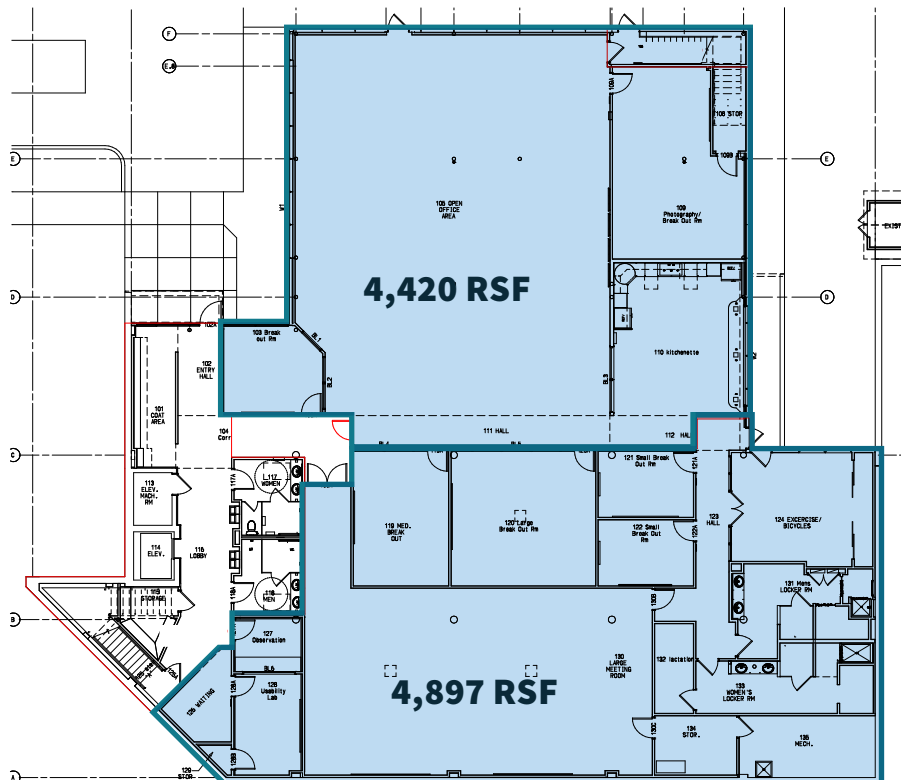
Ability to accommodate a variety of size needs.



Standard Floorplan



Demised Option

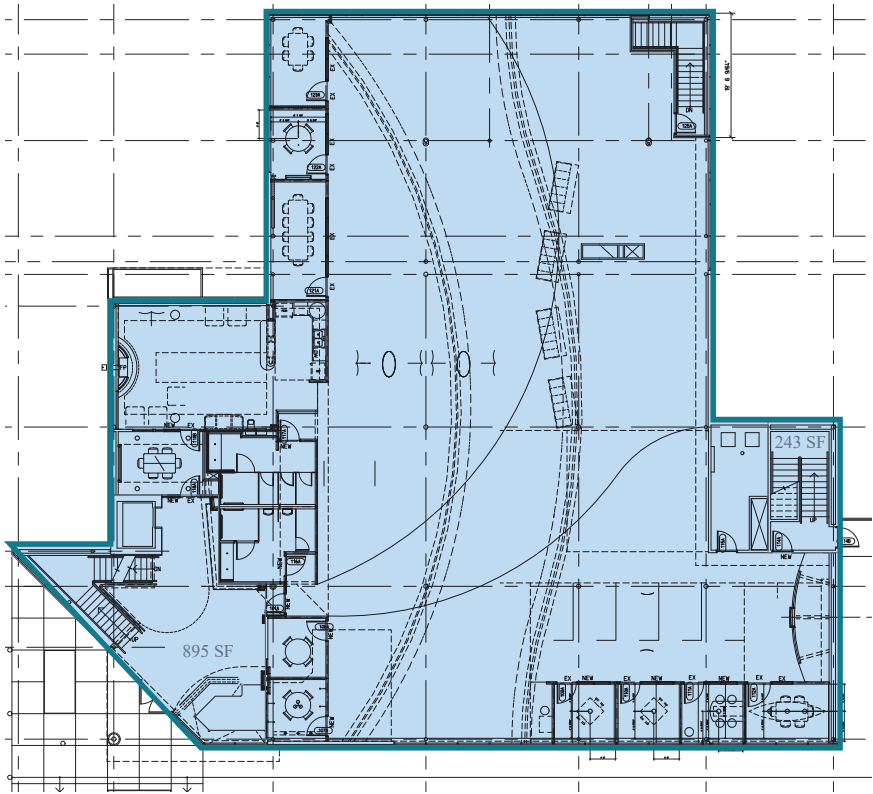


First Floor Sublease 10,853 RSF

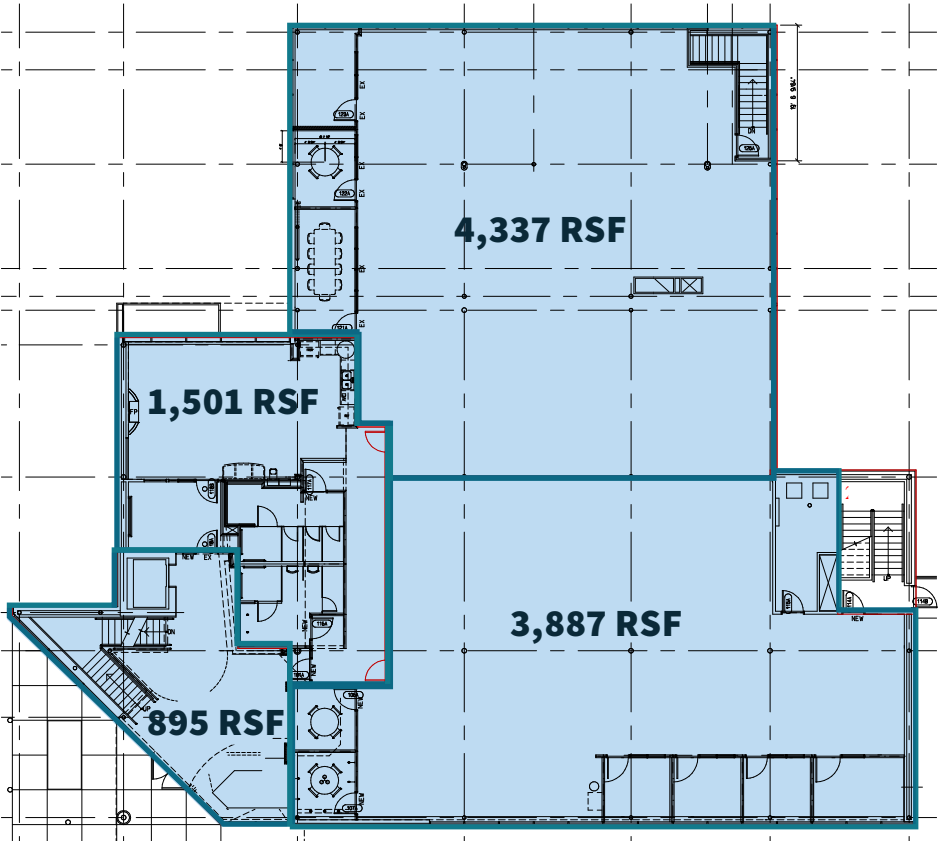
Ability to accommodate a variety of size needs.



Standard Floorplan

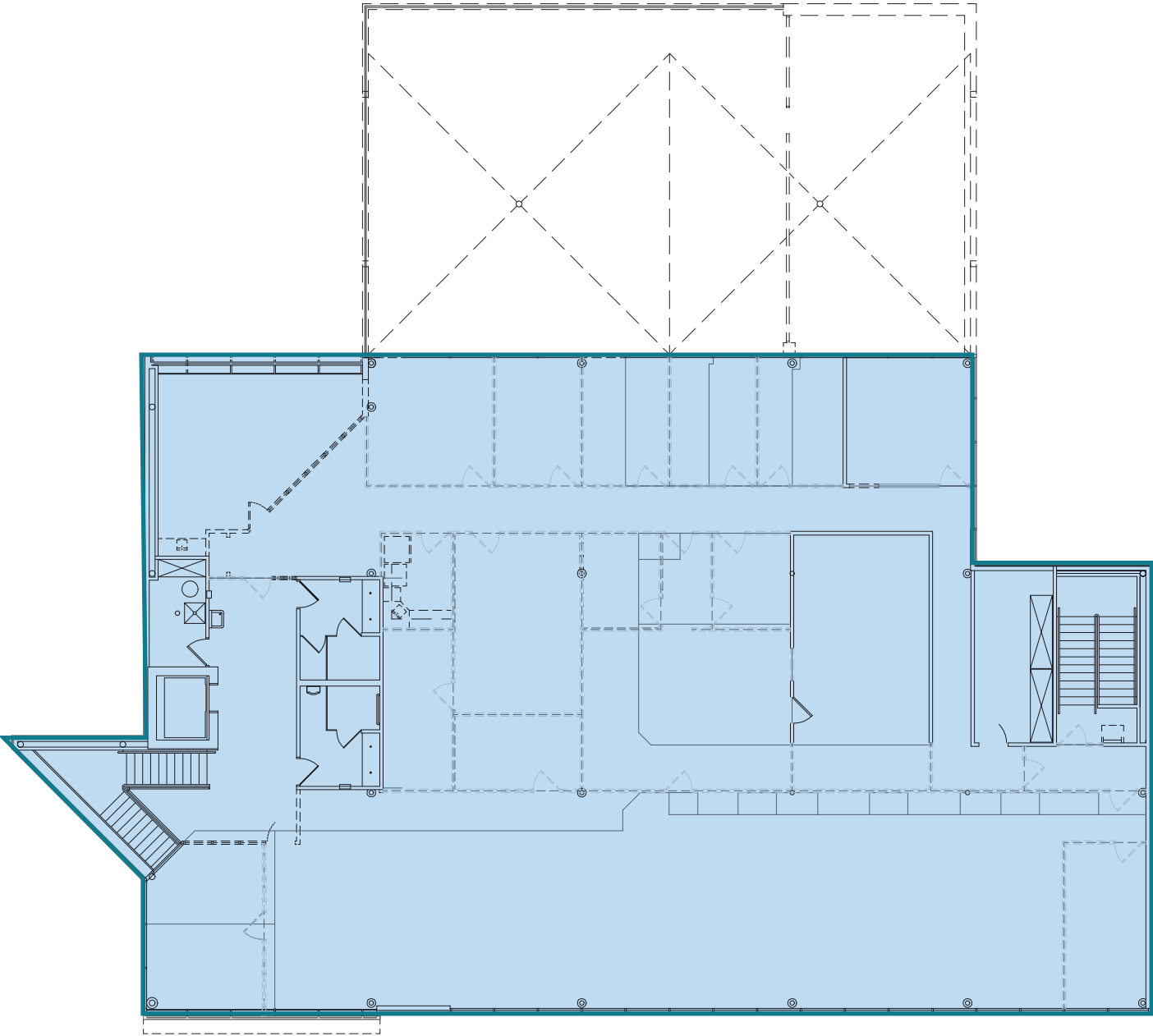


Demised Option

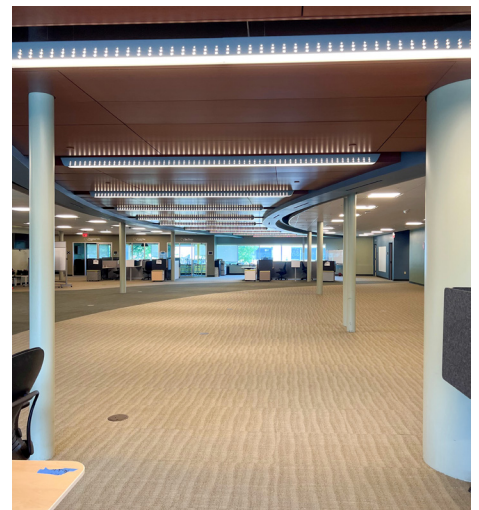


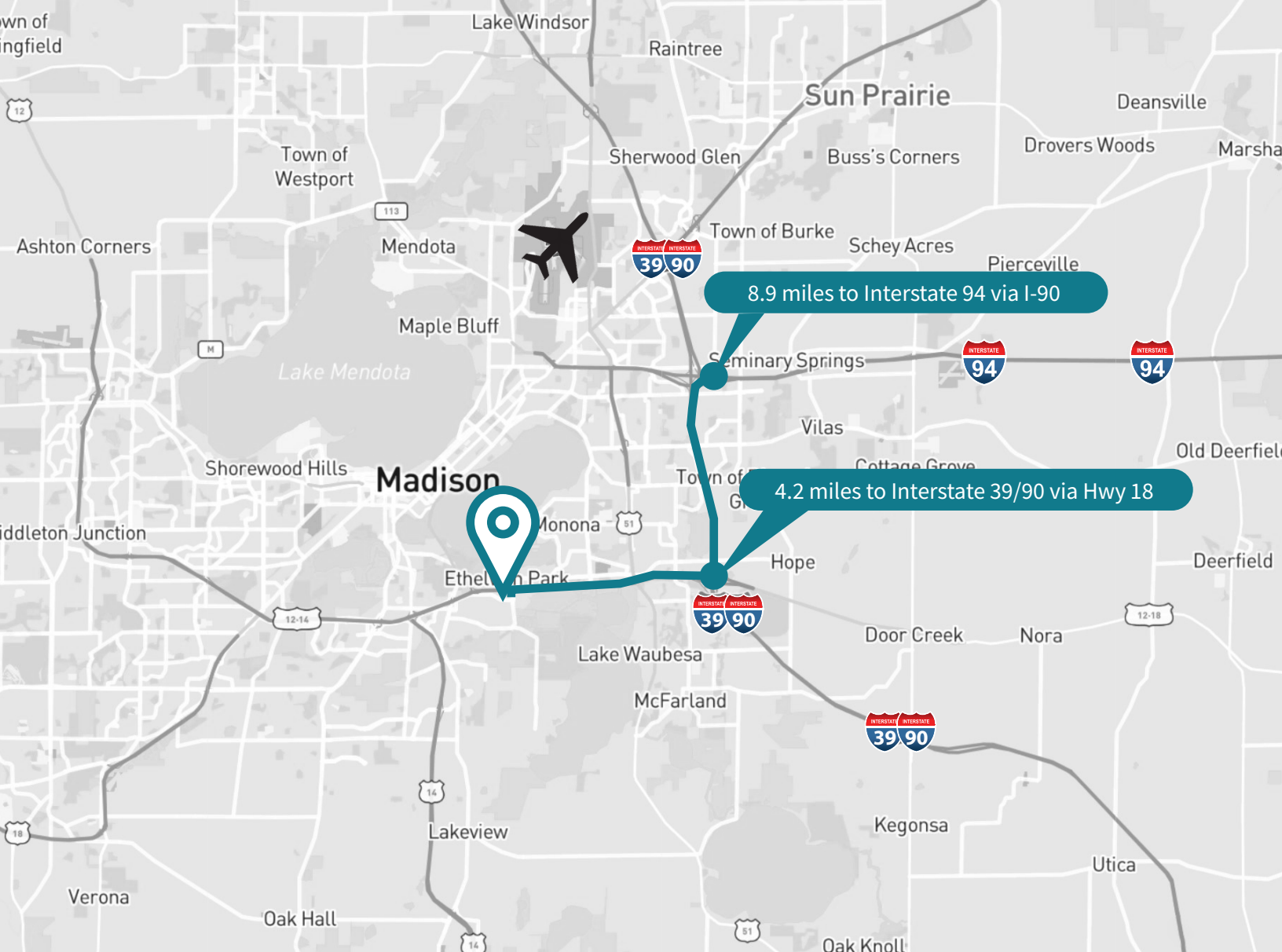
Second Floor Sublease 8,284 RSF

Ability to accommodate a variety of size needs.



Sublease Photos





~30,000 RSF
Full Building Office Sublease Available

6911 Mangrove Lane
Monona, WI 53713

Although information has been obtained from sources deemed reliable, JLL does not make any guarantees, warranties or representations, express or implied, as to the completeness or accuracy as to the information contained herein. Any projections, opinions, assumptions or estimates used are for example only. There may be differences between projected and actual results, and those differences may be material. JLL does not accept any liability for any loss or damage suffered by any party resulting from reliance on this information. If the recipient of this information has signed a confidentiality agreement with JLL regarding this matter, this information is subject to the terms of that agreement. ©2022. Jones Lang LaSalle IP, Inc. All rights reserved.

Leasing Information



Nick Hepner
T +1 414 944 2107
nick.hepner@am.jll.com

Michael Streit
T +1 414 944 2104
michael.streit@am.jll.com