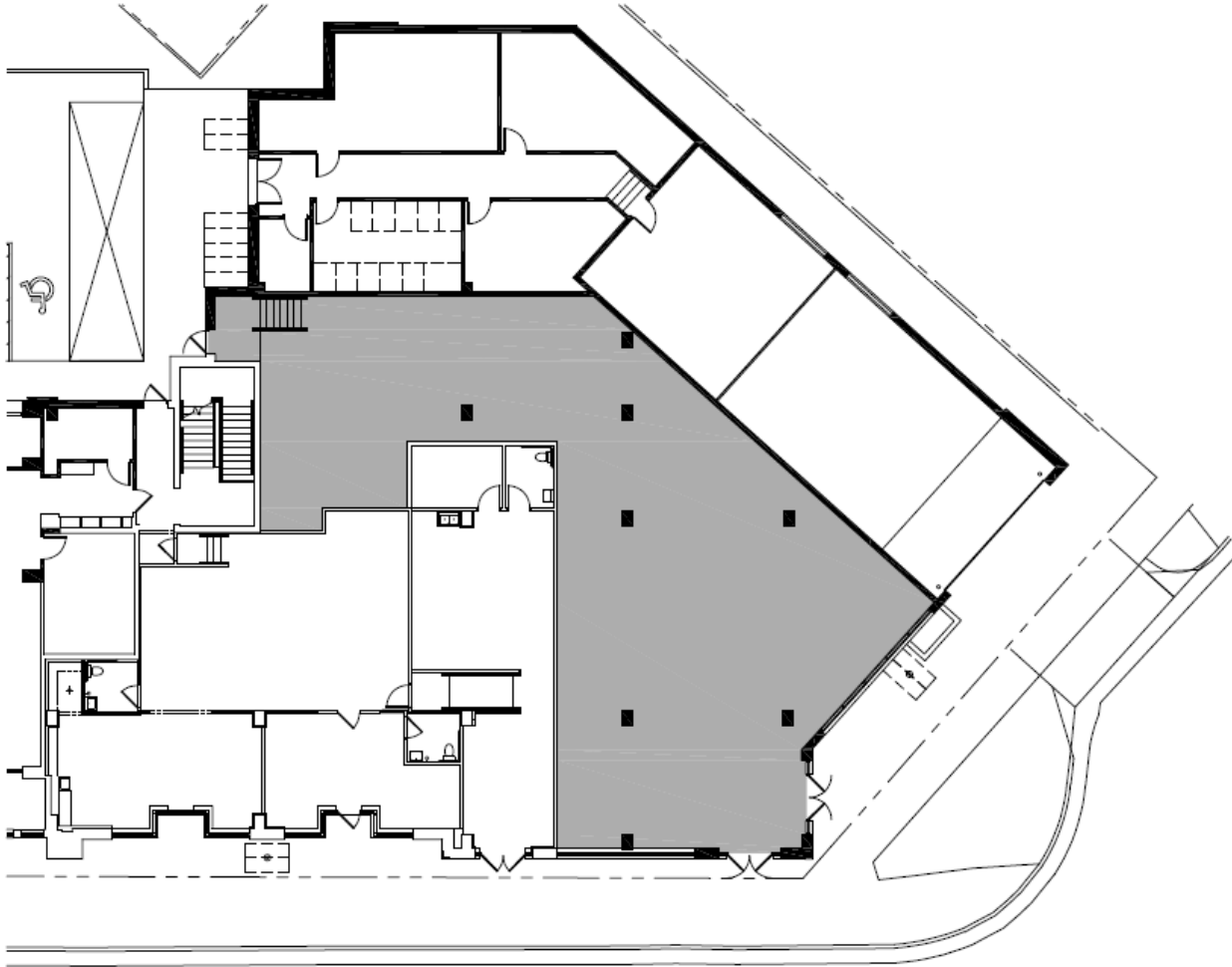


# 1722 MONROE

Suite 130 • 3,664 RSF • Available Now



## SUITE FEATURES

- First Generation Space
- Open, flexible floorplan
- First floor entrance off of Monroe Street
- Triple Net Lease
- \$28.00/SF

Brand new corner retail space at the main signalized intersection in the heart of Madison's favorite traditional shopping corridor. Be a part of a vibrant new mixed use development on the corner of Spooner and Monroe, right next to Trader Joe's, Orange Tree Imports, Madison Public Library and dozens of other locally owned shops and businesses. Retail spaces feature 14'-22' ceilings.

Urban Land Interests

10 East Doty Street, Suite 300

Madison, WI 53703

608.251.0706

[www.uli.com](http://www.uli.com)

