

# For Sublease

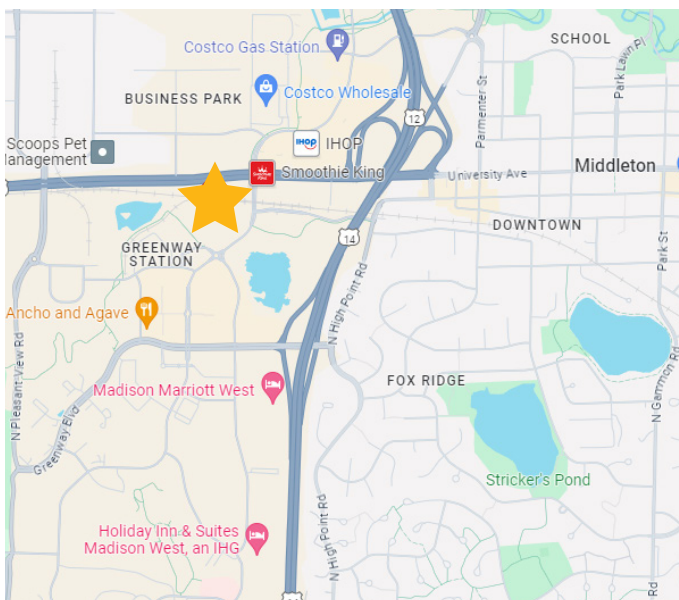
## 1850 Deming Way Suite 150

Middleton, WI 53562

### Space Profile

<b>Premises</b>	32,386 SF
<b>Rental Rate</b>	Negotiable
<b>Availability</b>	90 days
<b>Sublease Expiration</b>	April 30, 2026
<b>Parking Ratio</b>	4:1,000

### Map



### Space Notes

- 11 private offices
- 12 conference rooms
  - Some offices/conference rooms are interchangeable
- Large open café with vending
- Game room
- In-suite restrooms
- Patio with pergola
- High, open ceilings
- Lots of natural light
- 1 main entrance, 3 side entrances
- 4 storage closets
- The building is located on the edge of Greenway Station and proximate to numerous nearby amenities, including hotels and restaurants

### For More Information



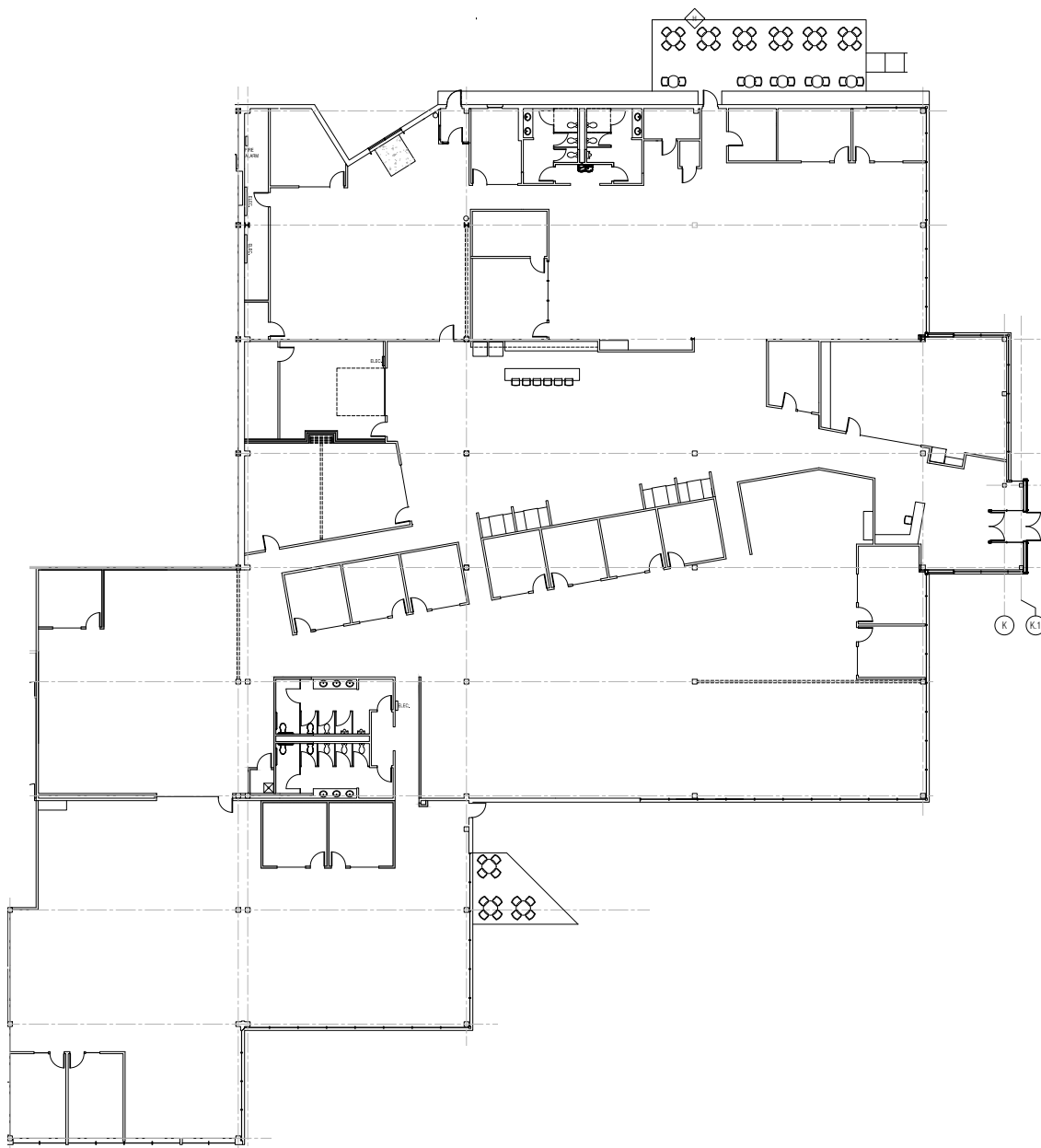
**Tim Ridders**  
608.669.4153  
tridders@cresa.com

**Cresa**  
613 Williamson Street  
Suite 210  
Madison, WI 53703  
cresa.com/madison-wi

Even though obtained from sources deemed reliable, no warranty or representation, express or implied, is made as to the accuracy of the information herein, and it is subject to errors, omissions, change of price, rental or other conditions, withdrawal without notice, and to any special listing conditions imposed by our principals.

**cresa**

Floor Plan - 32,386 SF



For More Information

Cresa  
613 Williamson Street  
Suite 210  
Madison, WI 53703  
cresa.com/madison-wi



Tim Ridders  
608.669.4153  
tridders@cresa.com

# Interior Photos



**1850 Deming Way**  
**Middleton, WI 53562**



Cresa © 2019. All rights reserved. The information contained in this document has been obtained from sources believed reliable. While Cresa does not doubt its accuracy, Cresa has not verified it and makes no guarantee, warranty, or representation about it. It is your responsibility to independently confirm its accuracy and completeness. Any projections, opinions, assumptions or estimates used are for example only and do not represent the current or future performance of the property. The value of this transaction to you depends on tax and other factors which should be evaluated by your tax, financial and legal advisors. You and your advisors should conduct a careful, independent investigation of the property to determine to your satisfaction the suitability of the property for your needs.