

NEWLY RENOVATED OFFICE & RETAIL BUILDING

OFFICE & RETAIL SPACE - FOR LEASE

133-135 ENTERPRISE DR, VERONA, WI 53593



FOR LEASE - 1,100 - 10,000 SF (\$18-22 P/SF)

OAKBROOK CORPORATION
2 Science Court, Suite 200
Madison, WI 53711



PRESENTED BY:

KATIE WEST
Commercial Real Estate Broker
office: (608) 443-1023
cell: (608) 833-6333
kwest@oakbrookcorp.com

The calculations and data presented are deemed to be accurate, but not guaranteed. They are intended for the purpose of illustrative projections and analysis. The information provided is not intended to replace or serve as substitute for any legal, accounting, investment, real estate, tax or other professional advice, consultation or service. The user of this software should consult with a professional in the respective legal, accounting, tax or other professional area before making any decisions.

PROPERTY SUMMARY

135 ENTERPRISE DRIVE



Property Summary

Available SF:	1,100-10,000 SF
Lease Rate:	\$18-22 p/sf NNN
Lease Term:	Minimum 3 Years
Year Built:	1994
Renovated:	2024
Parking:	60 stalls (3 handicap)
Zoning:	SC (Suburban Commercial)
Ceiling Heights:	12' - 17'
Total Building Size:	18,745 total SF, 1 floor
Site Size:	1.57 acres
Electrical:	1200amps;208y/120v;3p hs

Property Overview

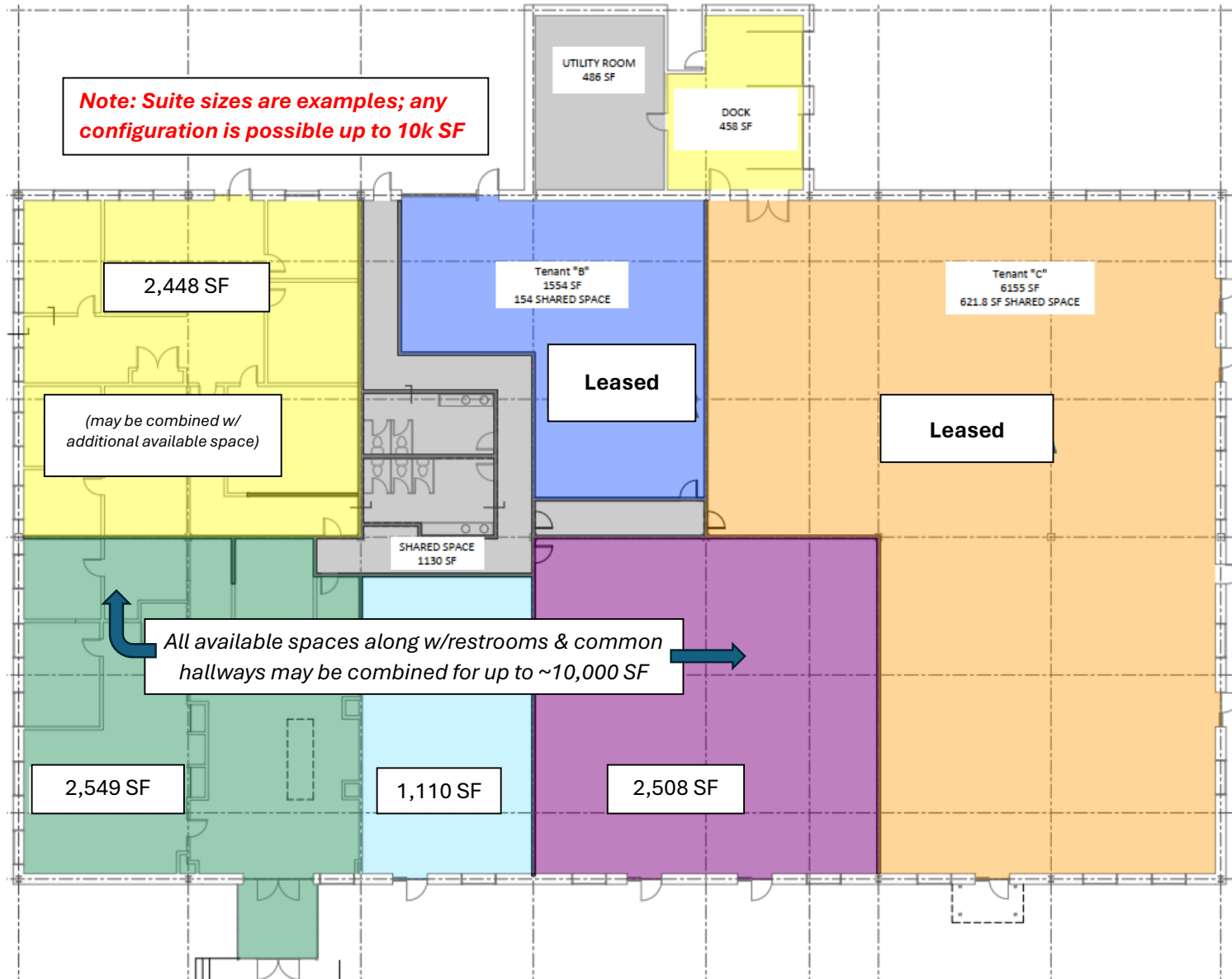
Under new ownership in 2024, this property will undergo significant remodeling and improvements both inside and out. Suitable for a variety of business types including retail, lab, & office. New zoning change from SI to SC effective in 2024. Direct entry access to each suite. Spaces available from 1,100 SF up to 10,000 SF (fit to your needs).

Location Overview

Verona's office parks near Epic Systems boast modern buildings surrounded by green spaces, offering a serene work environment. These parks feature contemporary designs, ample parking, and outdoor amenities like parks with walking paths, and several nearby restaurants and coffee shops. Located in a suburban area with close proximity to major roadways such as Hwy 18/151, and just minutes to downtown Madison & the UW Campus, & I-90/94

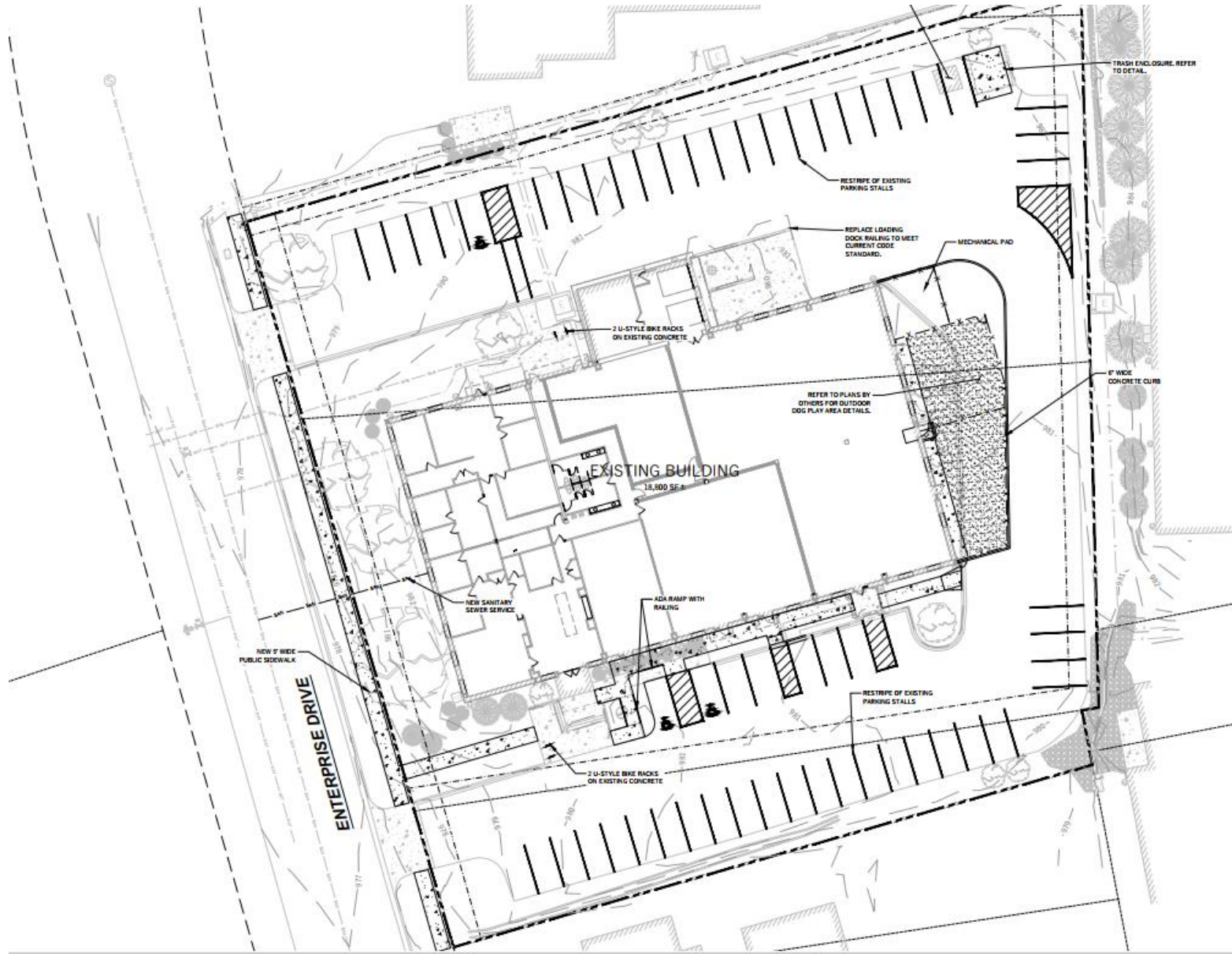
FLOOR PLAN

135 ENTERPRISE DRIVE



SITE PLAN

135 ENTERPRISE DRIVE



OAKBROOK CORPORATION
2 Science Court, Suite 200
Madison, WI 53711



KATIE WEST
Commercial Real Estate Broker
O: (608) 443-1023
C: (608) 833-6333
kwest@oakbrookcorp.com

PROPERTY PHOTOS

135 ENTERPRISE DRIVE



OAKBROOK CORPORATION
2 Science Court, Suite 200
Madison, WI 53711



KATIE WEST
Commercial Real Estate Broker
O: (608) 443-1023
C: (608) 833-6333
kwest@oakbrookcorp.com

LOCATION MAPS

135 ENTERPRISE DRIVE



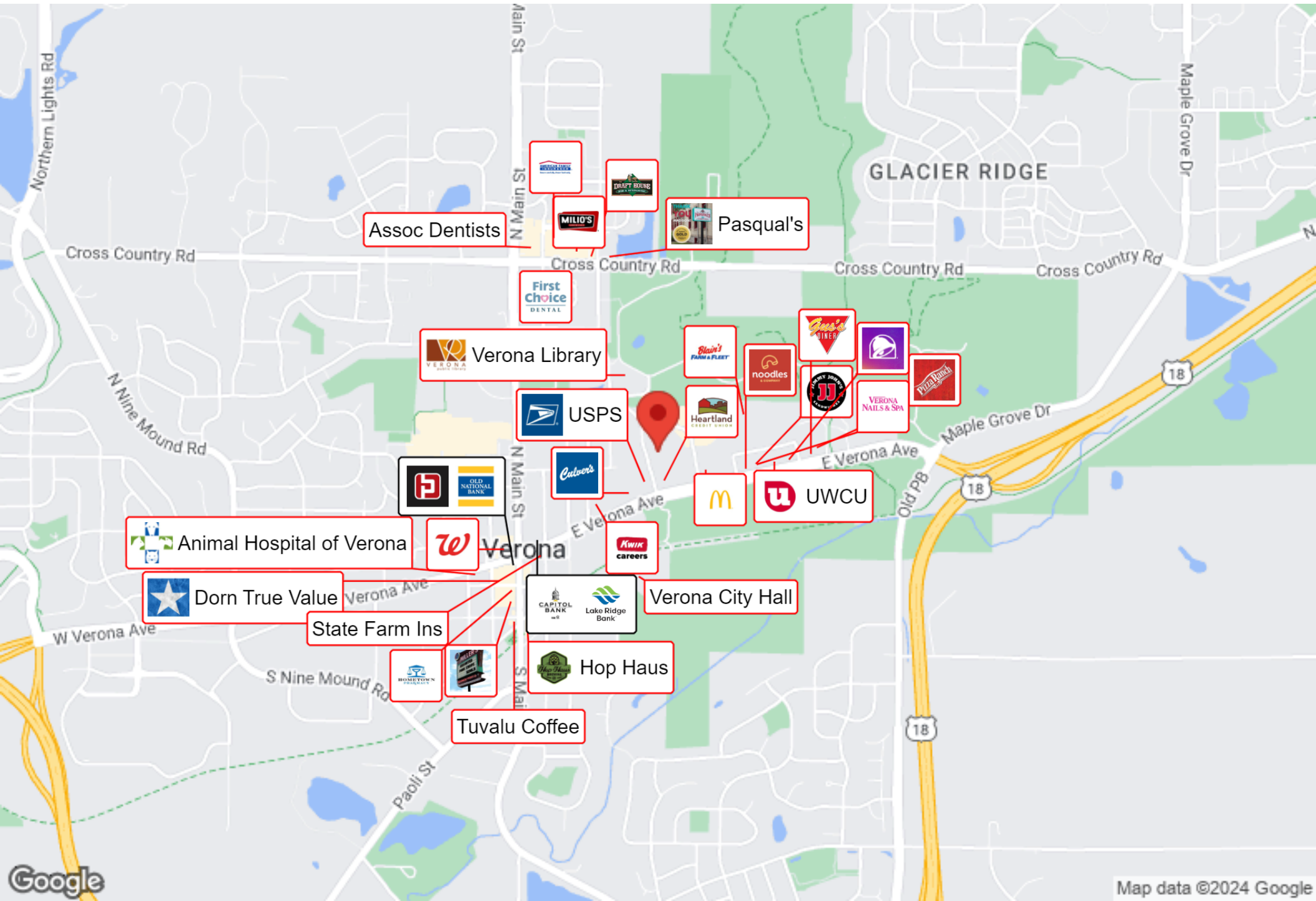
OAKBROOK CORPORATION
2 Science Court, Suite 200
Madison, WI 53711



KATIE WEST
Commercial Real Estate Broker
O: (608) 443-1023
C: (608) 833-6333
kwest@oakbrookcorp.com

BUSINESS MAP

135 ENTERPRISE DRIVE



DISCLAIMER

135 ENTERPRISE DRIVE

All materials and information received or derived from Oakbrook Corporation its directors, officers, agents, advisors, affiliates and/or any third party sources are provided without representation or warranty as to completeness, veracity, or accuracy, condition of the property, compliance or lack of compliance with applicable governmental requirements, developability or suitability, financial performance of the property, projected financial performance of the property for any party's intended use or any and all other matters.

Neither Oakbrook Corporation its directors, officers, agents, advisors, or affiliates makes any representation or warranty, express or implied, as to accuracy or completeness of the materials or information provided, derived, or received. Materials and information from any source, whether written or verbal, that may be furnished for review are not a substitute for a party's active conduct of its own due diligence to determine these and other matters of significance to such party. Oakbrook Corporation will not investigate or verify any such matters or conduct due diligence for a party unless otherwise agreed in writing.

EACH PARTY SHALL CONDUCT ITS OWN INDEPENDENT INVESTIGATION AND DUE DILIGENCE.

Any party contemplating or under contract or in escrow for a transaction is urged to verify all information and to conduct their own inspections and investigations including through appropriate third-party independent professionals selected by such party. All financial data should be verified by the party including by obtaining and reading applicable documents and reports and consulting appropriate independent professionals. Oakbrook Corporation makes no warranties and/or representations regarding the veracity, completeness, or relevance of any financial data or assumptions. Oakbrook Corporation does not serve as a financial advisor to any party regarding any proposed transaction.

All data and assumptions regarding financial performance, including that used for financial modeling purposes, may differ from actual data or performance. Any estimates of market rents and/or projected rents that may be provided to a party do not necessarily mean that rents can be established at or increased to that level. Parties must evaluate any applicable contractual and governmental limitations as well as market conditions, vacancy factors and other issues in order to determine rents from or for the property. Legal questions should be discussed by the party with an attorney. Tax questions should be discussed by the party with a certified public accountant or tax attorney. Title questions should be discussed by the party with a title officer or attorney. Questions regarding the condition of the property and whether the property complies with applicable governmental requirements should be discussed by the party with appropriate engineers, architects, contractors, other consultants, and governmental agencies. All properties and services are marketed by Oakbrook Corporation in compliance with all applicable fair housing and equal opportunity laws.

OAKBROOK CORPORATION
2 Science Court, Suite 200
Madison, WI 53711



PRESENTED BY:

KATIE WEST
Commercial Real Estate Broker
O: (608) 443-1023
C: (608) 833-6333
kwest@oakbrookcorp.com

The calculations and data presented are deemed to be accurate, but not guaranteed. They are intended for the purpose of illustrative projections and analysis. The information provided is not intended to replace or serve as substitute for any legal, accounting, investment, real estate, tax or other professional advice, consultation or service. The user of this software should consult with a professional in the respective legal, accounting, tax or other professional area before making any decisions.