

For Sublease

1200 John Q Hammons Drive 3rd Floor

Madison, WI 53717

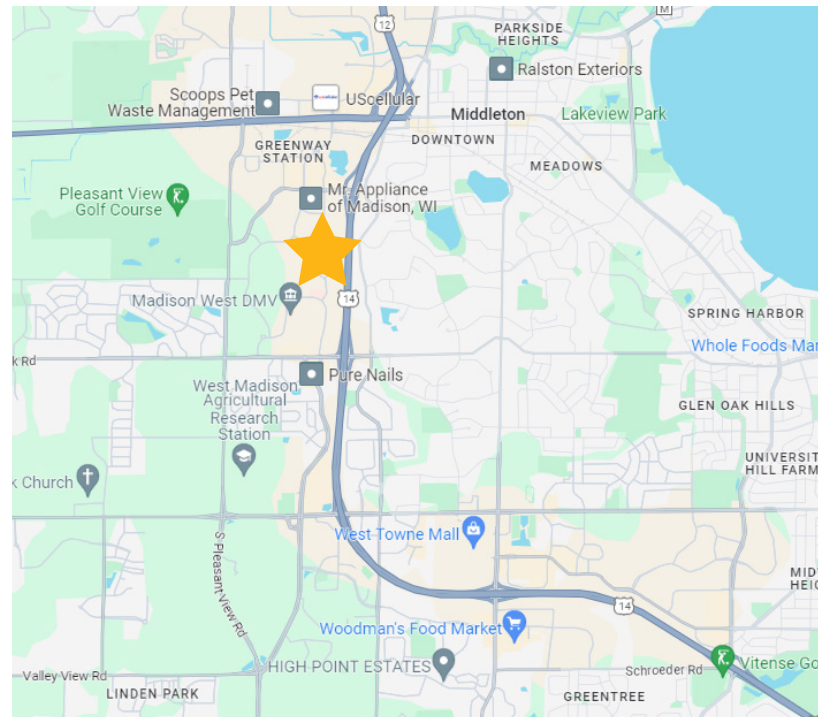
Space Profile

Premises	18,584 SF (Entire Floor)
Rental Rate	Negotiable
Availability	Immediate
Sublease Expiration	January 31, 2028
Parking	3 underground stalls and abundant surface parking

Space Notes

- Class A office
- Large breakroom
- 14 private offices
- Numerous conference/collaboration areas
- The premise is expandable
- Fully furnished
- Secure, underground bike parking
- Easy access to several nearby amenities

Map



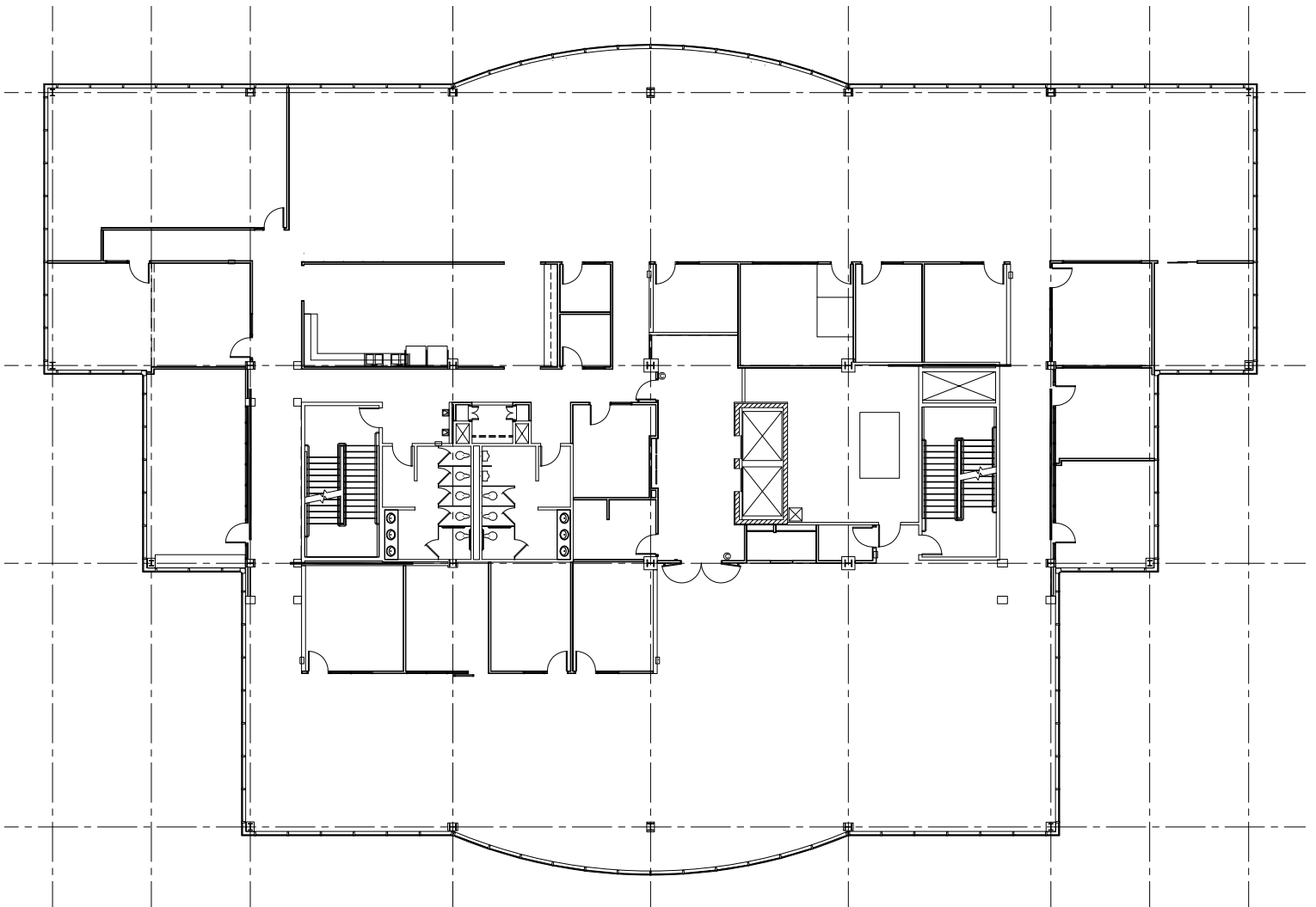
For More Information

Cresa
613 Williamson Street
Suite 210
Madison, WI 53703
cresa.com/madison-wi



Tim Ridders
608.669.4153
tridders@cresa.com

Floor Plan - 18,584 SF



For More Information

Cresa
613 Williamson Street
Suite 210
Madison, WI 53703
cresa.com/madison-wi



Tim Rikers
608.669.4153
trickers@cresa.com

Furniture Plan

