

For Sale

cresa

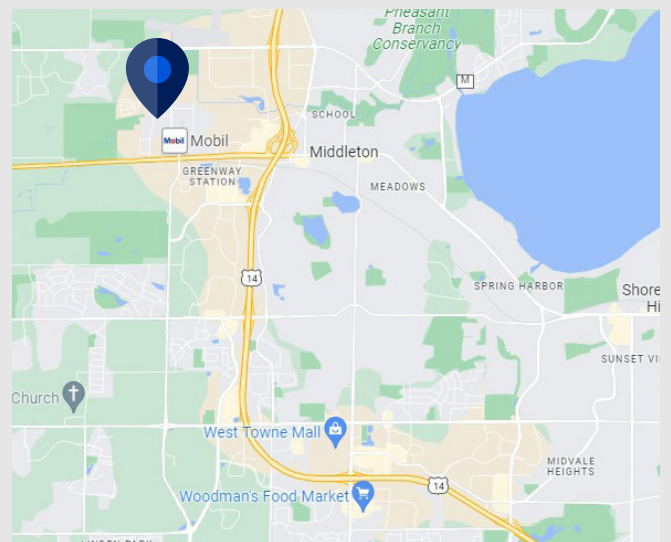


8720 Montclair Drive

Middleton, WI 53562

Property Snapshot

- Asking Price** \$2,200,000
- Size** 20,843 SF
- 6,276 SF office
 - 2,500 SF office/showroom
 - 2,032 SF mezzanine
 - 6,435 SF warehouse
 - 3,600 SF pole barn (1 drive in door)
- Zoning** Industrial
- Notes** Parking lot recently resealed/striped
Lease in place through 9/31/2026



Property Profile

- Year Built: 1995
- Lot Size: 1.975 acres (86,015 SF)
- Frontage: 158 feet on Montclair Drive
- 1 drive in door
- 2 dock doors

For More Information:



TJ Blitz
608.444.9440
tblitz@cresa.com

Cresa Madison
613 Williamson Street, 210
Madison WI 53703



8720 Montclair Drive Middleton, WI 53562



Cresa © 2019. All rights reserved. The information contained in this document has been obtained from sources believed reliable. While Cresa does not doubt its accuracy, Cresa has not verified it and makes no guarantee, warranty, or representation about it. It is your responsibility to independently confirm its accuracy and completeness. Any projections, opinions, assumptions or estimates used are for example only and do not represent the current or future performance of the property. The value of this transaction to you depends on tax and other factors which should be evaluated by your tax, financial and legal advisors. You and your advisors should conduct a careful, independent investigation of the property to determine to your satisfaction the suitability of the property for your needs.



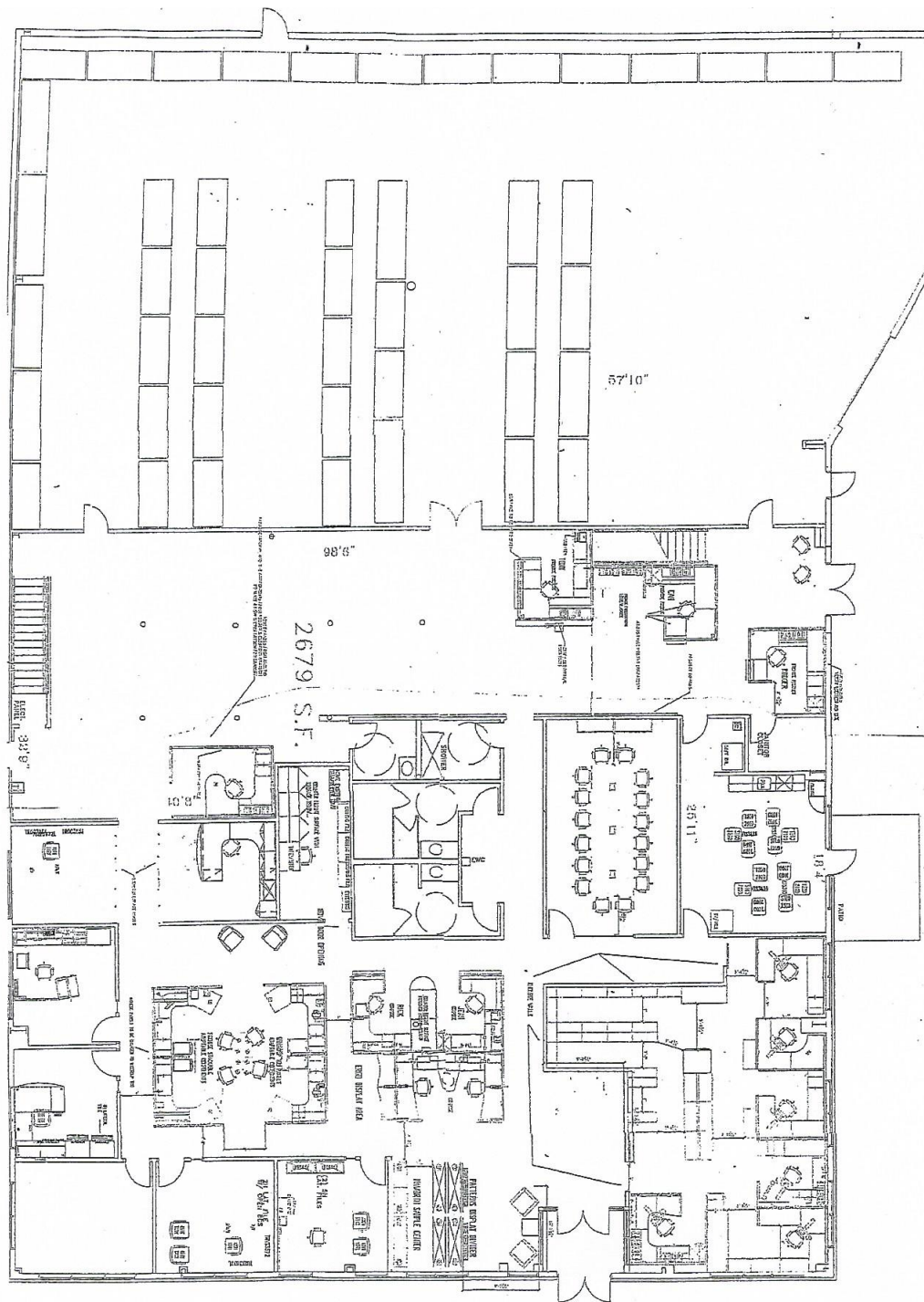
8720 Montclair Drive
Middleton, WI 53562



Cresa © 2019. All rights reserved. The information contained in this document has been obtained from sources believed reliable. While Cresa does not doubt its accuracy, Cresa has not verified it and makes no guarantee, warranty, or representation about it. It is your responsibility to independently confirm its accuracy and completeness. Any projections, opinions, assumptions or estimates used are for example only and do not represent the current or future performance of the property. The value of this transaction to you depends on tax and other factors which should be evaluated by your tax, financial and legal advisors. You and your advisors should conduct a careful, independent investigation of the property to determine to your satisfaction the suitability of the property for your needs.

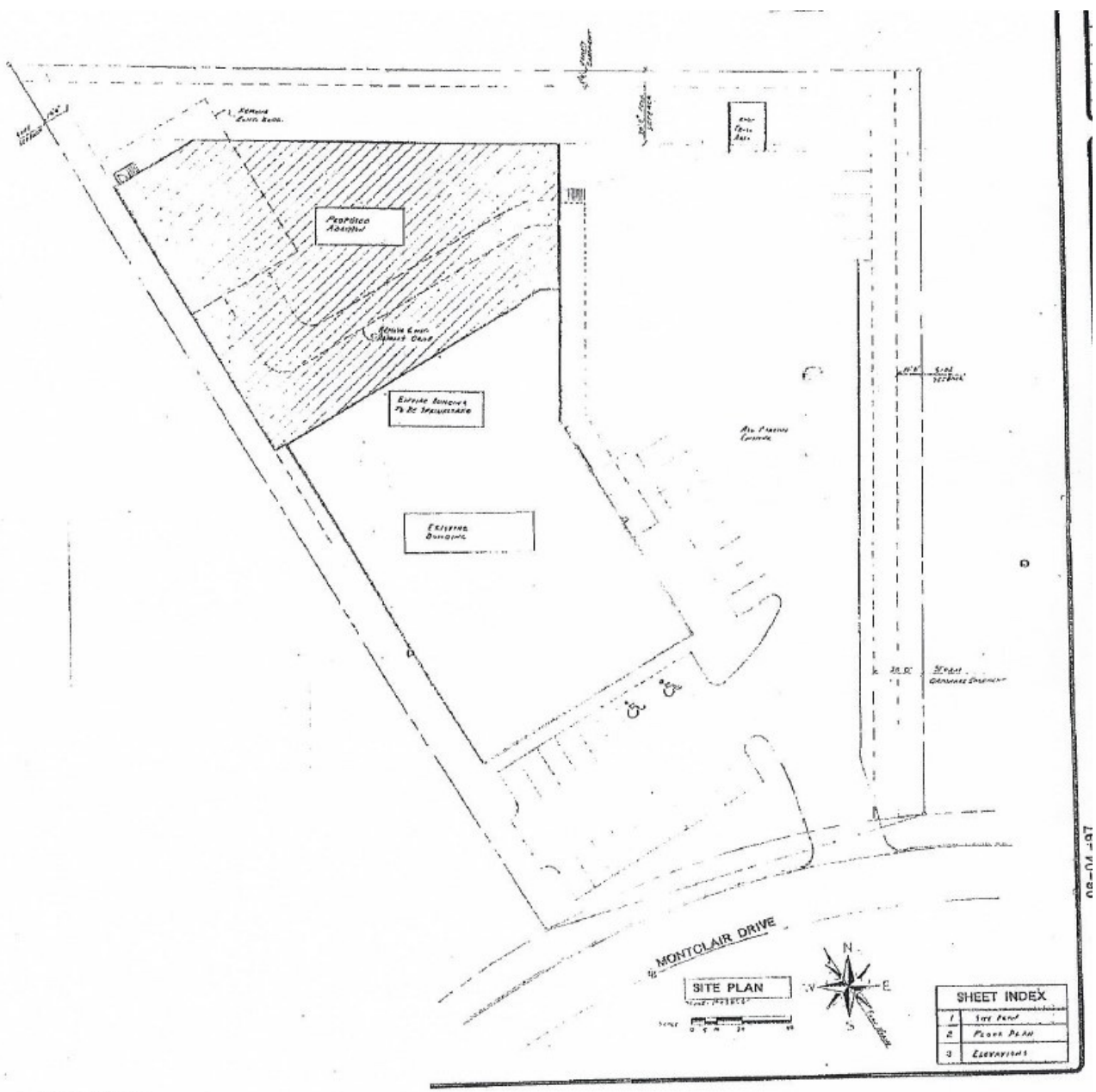
8720 Montclair Drive
Middleton, WI 53562

Floor Plan - 20,843 SF



Cresa © 2019. All rights reserved. The information contained in this document has been obtained from sources believed reliable. While Cresa does not doubt its accuracy, Cresa has not verified it and makes no guarantee, warranty, or representation about it. It is your responsibility to independently confirm its accuracy and completeness. Any projections, opinions, assumptions or estimates used are for example only and do not represent the current or future performance of the property. The value of this transaction to you depends on tax and other factors which should be evaluated by your tax, financial and legal advisors. You and your advisors should conduct a careful, independent investigation of the property to determine to your satisfaction the suitability of the property for your needs.

Site Plan



Cresa © 2019. All rights reserved. The information contained in this document has been obtained from sources believed reliable. While Cresa does not doubt its accuracy, Cresa has not verified it and makes no guarantee, warranty, or representation about it. It is your responsibility to independently confirm its accuracy and completeness. Any projections, opinions, assumptions or estimates used are for example only and do not represent the current or future performance of the property. The value of this transaction to you depends on tax and other factors which should be evaluated by your tax, financial and legal advisors. You and your advisors should conduct a careful, independent investigation of the property to determine to your satisfaction the suitability of the property for your needs.