



**221 S Columbus Street, Randolph, WI 53956**

## Additional Information

- 3 large overhead doors
- Up to 11' ceilings
- Established business in a great location!
- Large reception/office space with private bathroom

## List Price

# \$399,900

# For Sale



## HIGHLIGHTS:

- Turn-key Auto Body Shop
- 4,679 SF garage and office space
- 0.35 Acre Corner lot
- Large indoor garage space
- Option to purchase business and equipment



**David Baehr**

Broker, ABR, RRS



608.213.6686



david@baehrinc.com



www.baehrinc.com



202 W. Main Street, Sun Prairie, WI 53590

# Description



This turn-key auto body shop, nestled in the charming town of Randolph, WI, is conveniently situated on a spacious 0.35-acre lot, offering ample room for expansion and customer parking. Boasting a meticulously maintained 4,679 sq ft building with three convenient overhead doors, it stands ready for new ownership, with flexible sale terms tailored to suit the buyer's needs. It presents an exceptional opportunity for entrepreneurs or investors seeking immediate entry into the thriving automotive market, this is not only a lucrative investment opportunity but also a chance to become a cornerstone of the local community. Don't miss out—schedule a viewing today and envision the boundless potential this property holds for your automotive business aspirations!

## Details

List Price .....	<b>\$399,900/SF</b>
Price/SF .....	<b>\$85.47/SF</b>
Lot Size .....	<b>0.350 acres</b>
Building SF .....	<b>4,679</b>

Property Type .....	<b>Commercial</b>
Sub Type .....	<b>Auto Body</b>
APN .....	<b>176-1213-0632-097</b>

## List Price

# \$399,900

**David Baehr**  
Broker, ABR, RRS



608.213.6686



david@baehrinc.com

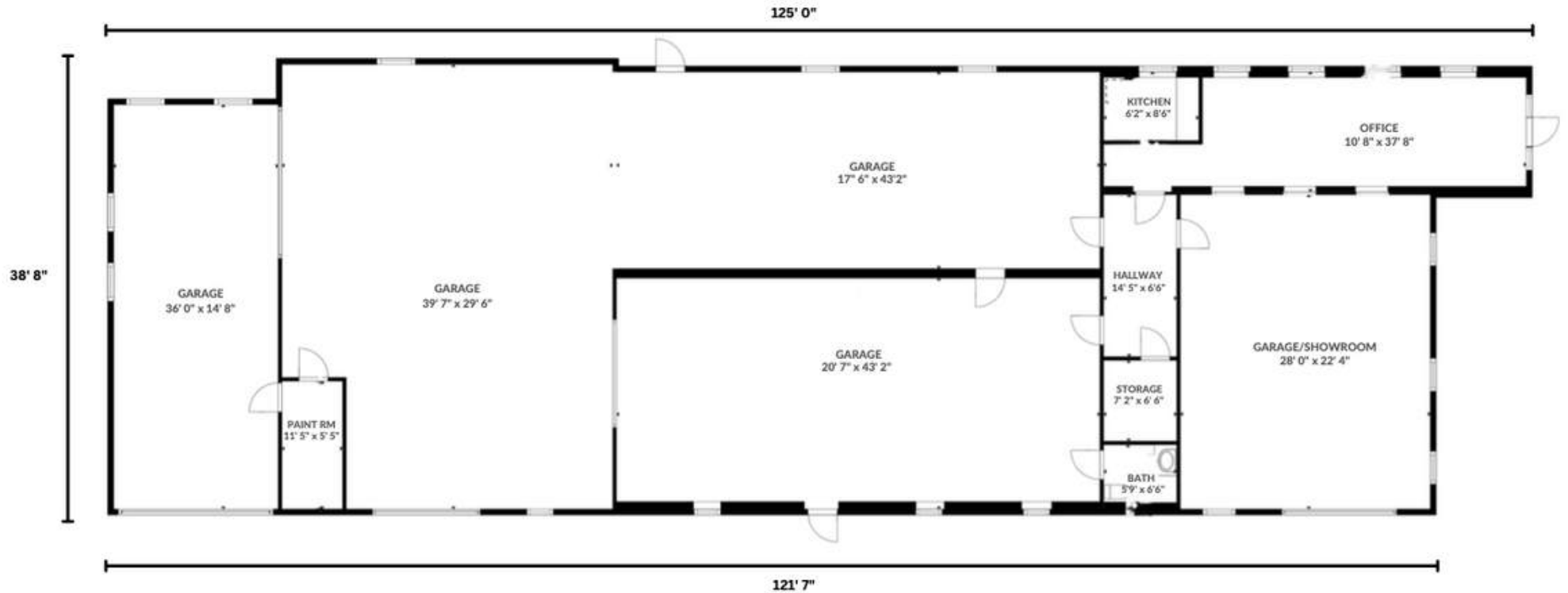


www.baehrinc.com



202 W. Main Street, Sun Prairie, WI 53590

## 221 S Columbus Street Floor Plan



GROSS INTERNAL AREA  
TOTAL: 4,679 sq.ft.

SIZES AND DIMENSIONS ARE APPROXIMATE, ACTUAL MAY VARY.



# 221 S Columbus Street, Randolph, WI

Created by: undefined



The data used to create this map is a compilation of records, information, and data from various city, county and state offices, and other sources. This map is only advisory, does not replace a survey, and may not be used for any legal purpose. Dodge County assumes no liability for any use or misuse of this information.



