



Available — HIGH Visibility Drive Thru East Towne Retail / Restaurant Opportunity!!



4833 Annamark Dr

Madison Wisconsin

INSIDE:

- General Information
- Photos
- Aerial View
- Site Plan
- Space Plans
- Location Map

Contact:

Jamani Bergh

Main: 608-237-7550

Cell: 608-473-7727

jamanibergh@whiteboxcpq.com

www.whiteboxcpq.com



4833 Annamark Dr

Madison Wisconsin

Page 3 of 9

Photos



4833 Annamark Dr

Madison Wisconsin

Page 2 of 9



General Information

White Box Commercial Property Group is pleased to present FOR LEASE:

HIGH Visibility Drive Thru Restaurant space now available! Adjacent to Texas Road House fronting East Washington just off I-90. Monument signage with nearly 43,000 VPD. Approx. 9 to 1 parks with 5 car stacking to menu board. ~900sf south facing patio along with smaller pad facing north. Ample seating with large windows and 14ft to roof deck. Space has hoods, grease trap, filtration system and walk-ins to boot. The site is currently split — the former Potbelly/Dickeys.

Available SF:	4,866 square feet
Lease Rate:	\$22.00 NNN per square foot
Operating Expenses:	Estimated at \$9.00 per square foot
Date Available:	Now
Parking:	44 total stalls
Term:	8-15 Years
Amenities:	<ul style="list-style-type: none">• Drive-thru• Direct access from HWY• Strong anchor tenants• High ceilings - Large Windows• South + North facing patios• High visibility w/monument signage available

Contact:	Jamani Bergh Main: 608-237-7550 Cell: 608-473-7727 jamanibergh@whiteboxcpg.com www.whiteboxcpg.com
-----------------	---



4833 Annamark Dr

Madison Wisconsin

Page 4 of 9

Photos



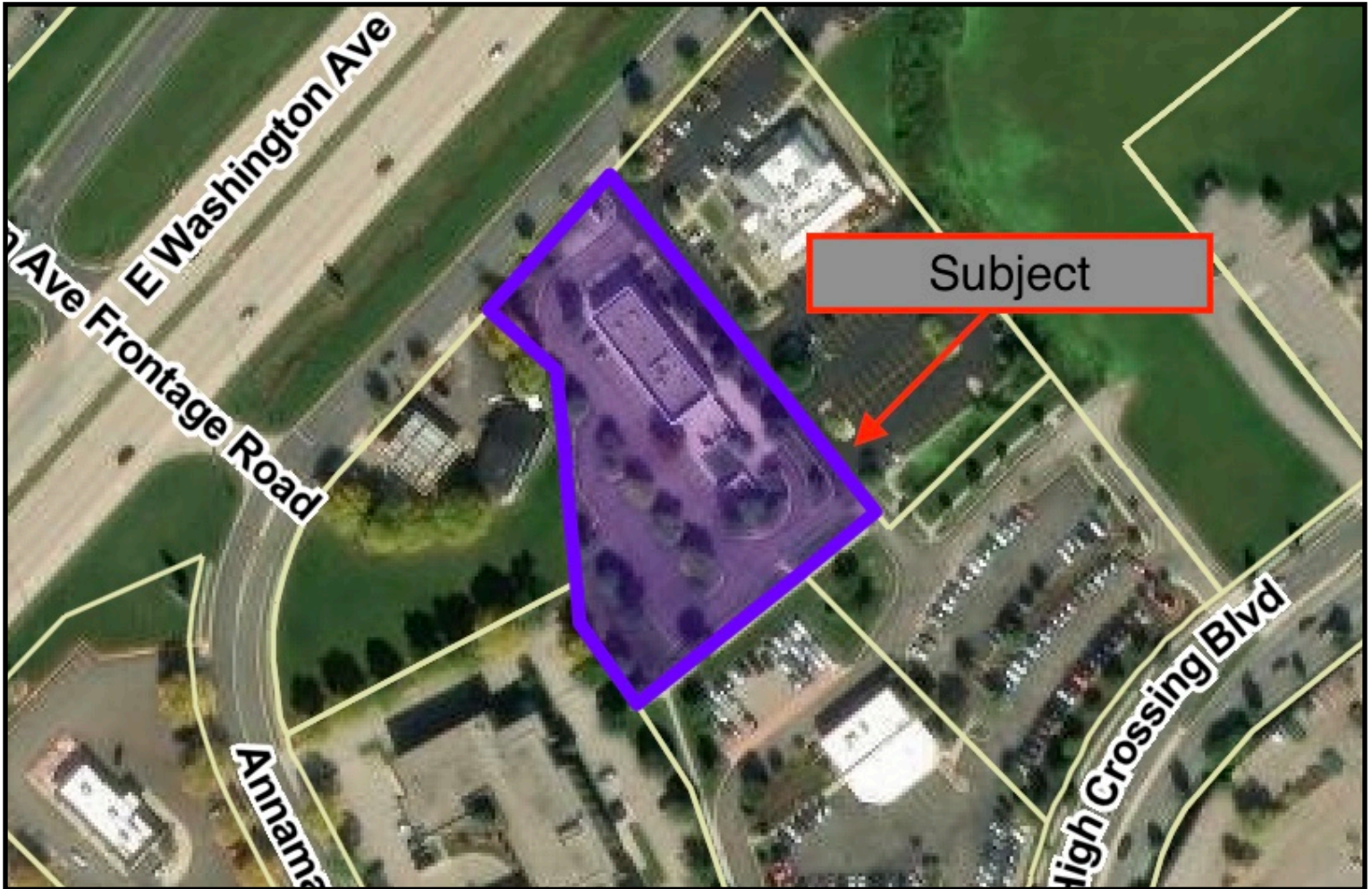
4833 Annamark Dr

Madison Wisconsin

Page 5 of 9



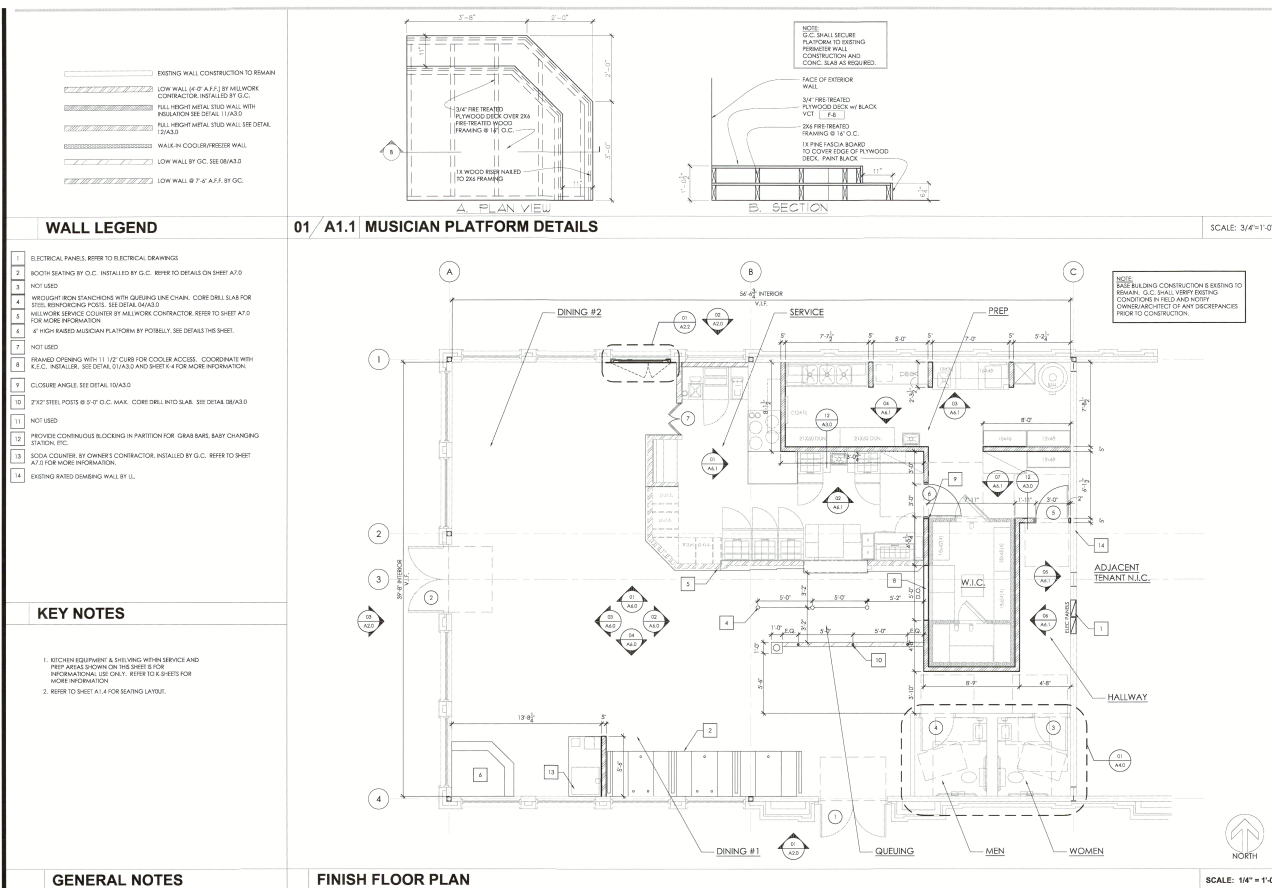
Aerial View



Page 7 of 9

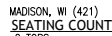


Space Plans



	
222 MERCHANDISE MART PLAZA 23RD FLOOR CHICAGO, IL 60604 P-312.891.0800 F-312.891.0300 POTBELLY.COM	
 CHIPMAN ADAMS LTD. 110 N. LAKE ST., SUITE 100 CHICAGO, ILLINOIS 60602 TEL: 312.467.7000 FAX: 312.467.7001 info@chipmanadams.com	
DRAWN BY: JACOB RYAN CHECKED BY: JACOB RYAN DATE: 05/24/2017 PROJECT NO.: 17-00000000-00000000 SHEET NO.: 001 OF 001	
CHIPMAN ADAMS PROJECT# 00-3862	
SHEET TITLE:	FLOOR PLAN
SITE ADDRESS:	EAST TOWNE MALL EAST WISCONSIN 53704
SUBMITTALS	
DESIGN DEVELOPMENT	04.17.06
90% REVIEW	
PERMIT	11.16.06
BID	
REVISIONS	
REVISION #	DATE
SHEET NUMBER	
A1.1	

Page 8 of 9



4833 Annamark Dr

Madison Wisconsin

Page 9 of 9



Location Map



BROKER DISCLOSURE TO NON-RESIDENTIAL CUSTOMERS

1 Prior to negotiating on your behalf the Broker must provide you the following disclosure statement:

2 **BROKER DISCLOSURE TO CUSTOMERS**

3 You are a customer of the broker. The broker is either an agent of another party in the transaction or a subagent of another broker
4 who is the agent of another party in the transaction. The broker, or a salesperson acting on behalf of the broker, may provide
5 brokerage services to you. Whenever the broker is providing brokerage services to you, the broker owes you, the customer, the
6 following duties:

7 ■ The duty to provide brokerage services to you fairly and honestly.

8 ■ The duty to exercise reasonable skill and care in providing brokerage services to you.

9 ■ The duty to provide you with accurate information about market conditions within a reasonable time if you request it, unless
10 disclosure of the information is prohibited by law.

11 ■ The duty to disclose to you in writing certain material adverse facts about a property, unless disclosure of the information is
12 prohibited by law (**See Lines 47-55**).

13 ■ The duty to protect your confidentiality. Unless the law requires it, the broker will not disclose your confidential information or the
14 confidential information of other parties (**See Lines 22-39**).

15 ■ The duty to safeguard trust funds and other property the broker holds.

16 ■ The duty, when negotiating, to present contract proposals in an objective and unbiased manner and disclose the advantages and
17 disadvantages of the proposals.

18 Please review this information carefully. A broker or salesperson can answer your questions about brokerage services, but if you
19 need legal advice, tax advice, or a professional home inspection, contact an attorney, tax advisor, or home inspector.

20 This disclosure is required by section 452.135 of the Wisconsin statutes and is for information only. It is a plain-language summary of
21 a broker's duties to a customer under section 452.133 (1) of the Wisconsin statutes.

22 **CONFIDENTIALITY NOTICE TO CUSTOMERS**

23 BROKER WILL KEEP CONFIDENTIAL ANY INFORMATION GIVEN TO BROKER IN CONFIDENCE, OR ANY INFORMATION
24 OBTAINED BY BROKER THAT HE OR SHE KNOWS A REASONABLE PERSON WOULD WANT TO BE KEPT CONFIDENTIAL,
25 UNLESS THE INFORMATION MUST BE DISCLOSED BY LAW OR YOU AUTHORIZE THE BROKER TO DISCLOSE PARTICULAR
26 INFORMATION. A BROKER SHALL CONTINUE TO KEEP THE INFORMATION CONFIDENTIAL AFTER BROKER IS NO LONGER
27 PROVIDING BROKERAGE SERVICES TO YOU.

28 THE FOLLOWING INFORMATION IS REQUIRED TO BE DISCLOSED BY LAW:

29 1. MATERIAL ADVERSE FACTS, AS DEFINED IN SECTION 452.01 (5g) OF THE WISCONSIN STATUTES (**SEE LINES 47-55**).

30 2. ANY FACTS KNOWN BY THE BROKER THAT CONTRADICT ANY INFORMATION INCLUDED IN A WRITTEN INSPECTION
31 REPORT ON THE PROPERTY OR REAL ESTATE THAT IS THE SUBJECT OF THE TRANSACTION.

32 TO ENSURE THAT THE BROKER IS AWARE OF WHAT SPECIFIC INFORMATION YOU CONSIDER CONFIDENTIAL, YOU MAY LIST
33 THAT INFORMATION BELOW (**SEE LINES 35-36**). AT A LATER TIME, YOU MAY ALSO PROVIDE THE BROKER WITH OTHER
34 INFORMATION YOU CONSIDER TO BE CONFIDENTIAL.

35 **CONFIDENTIAL INFORMATION:** _____

36

37 **NON-CONFIDENTIAL INFORMATION** (The following information may be disclosed by Broker): _____

38

39 *(INSERT INFORMATION YOU AUTHORIZE THE BROKER TO DISCLOSE SUCH AS FINANCIAL QUALIFICATION INFORMATION.)*

40 **CONSENT TO TELEPHONE SOLICITATION**

41 I/We agree that the Broker and any affiliated settlement service providers (for example, a mortgage company or title company) may
42 call our/my home or cell phone numbers regarding issues, goods and services related to the real estate transaction until I/we
43 withdraw this consent in writing. **List Home/Cell Numbers:** _____

44 **SEX OFFENDER REGISTRY**

45 *Notice: You may obtain information about the sex offender registry and persons registered with the registry by contacting the*
46 *Wisconsin Department of Corrections on the Internet at: <http://offender.doc.state.wi.us/public/> or by phone at 608-240-5830.*

47 **DEFINITION OF MATERIAL ADVERSE FACTS**

48 A "material adverse fact" is defined in Wis. Stat. § 452.01(5g) as an adverse fact that a party indicates is of such significance, or that
49 is generally recognized by a competent licensee as being of such significance to a reasonable party, that it affects or would affect
50 the party's decision to enter into a contract or agreement concerning a transaction or affects or would affect the party's decision
51 about the terms of such a contract or agreement. An "adverse fact" is defined in Wis. Stat. § 452.01(1e) as a condition or occurrence
52 that a competent licensee generally recognizes will significantly and adversely affect the value of the property, significantly reduce
53 the structural integrity of improvements to real estate, or present a significant health risk to occupants of the property; or information
54 that indicates that a party to a transaction is not able to or does not intend to meet his or her obligations under a contract or
55 agreement made concerning the transaction.

No representation is made as to the legal validity of any provision or the adequacy of any provision in any specific transaction.

Copyright 2007 by Wisconsin REALTORS® Association