

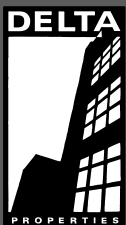
SUITE 302

612 W MAIN STREET MADISON WI, 53703

AVAILABLE: NOW

SIZE : 1,595 SF

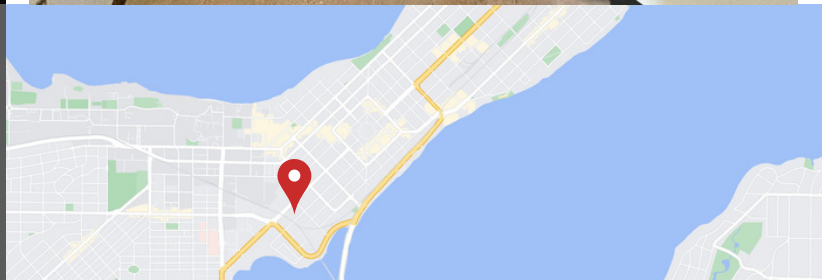
- 4-5 PRIVATE OFFICES, 1 CONFERENCE ROOM
- OPEN WORK AREA & KITCHEN
- SHOWER FACILITIES
- OPERABLE WINDOWS
- ENERGY EFFICIENT LIGHT FIXTURES
- HIGH EFFICIENCY HVAC & MERV13 AIR FILTERS
- ADA ACCESSIBLE
- AMPLE SURFACE PARKING & INDOOR BIKE PARKING
- IMMEDIATE BIKE PATH ACCESS
- CLOSE PROXIMITY TO CAPITOL SQUARE AND KOHL CENTER
- OUTDOOR PATIO
- ONSITE MANAGEMENT



(608)251-3337

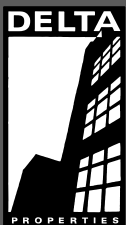
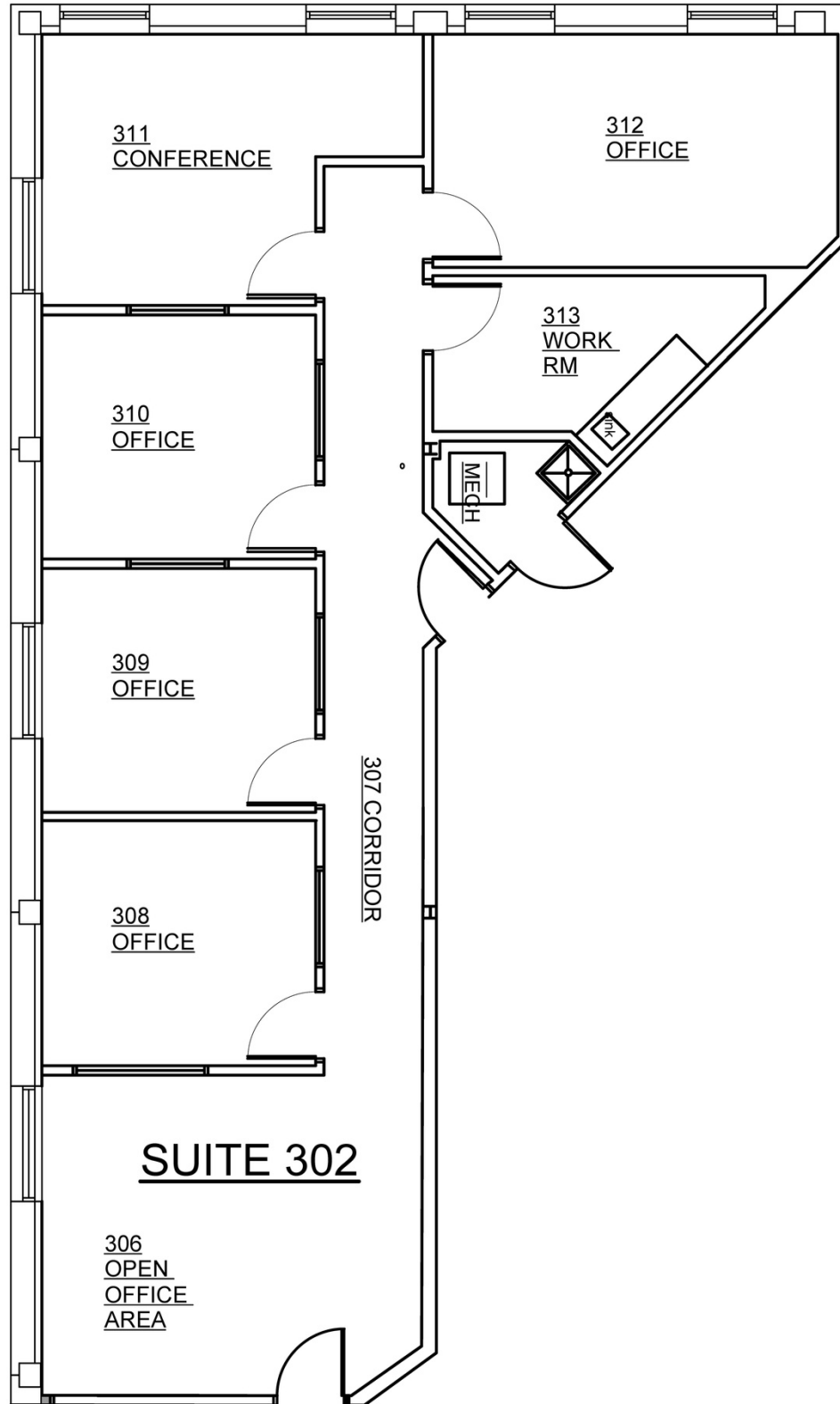
JUDY@DELTA-PROPERTIES.COM

WWW.DELTA-PROPERTIES.COM



SUITE 302

612 W MAIN STREET MADISON WI, 53703



(608)251-3337

JUDY@DELTA-PROPERTIES.COM

WWW.DELTA-PROPERTIES.COM

